

Lakefront

13601-13633 Lakefront Drive

Earth City, MO 63045

3,690 SF EARTH CITY OFFICE / WAREHOUSE AVAILABLE FOR LEASE



- **3,690 SF Available**
- 13607 Lakefront Drive
- Approximately 60% office buildout
- Dock loading
- **LEASE RATE: \$7.00 PSF NNN**

- Upscale service center building located on the corner of Lakefront Dr and Wedgeway Ct
- 16' clear ceiling height
- 3:1,000 parking ratio
- Excellent truck turnaround area
- Close proximity to most major area highways and international airport for intermodal accessibility

HUTKIN DEVELOPMENT COMPANY

10829 Olive Boulevard
Suite 200
St. Louis, MO 63141

Telephone 314.872.9140
FAX 314.872.9001

Visit our website:
www.hutkin.com

CONTACT

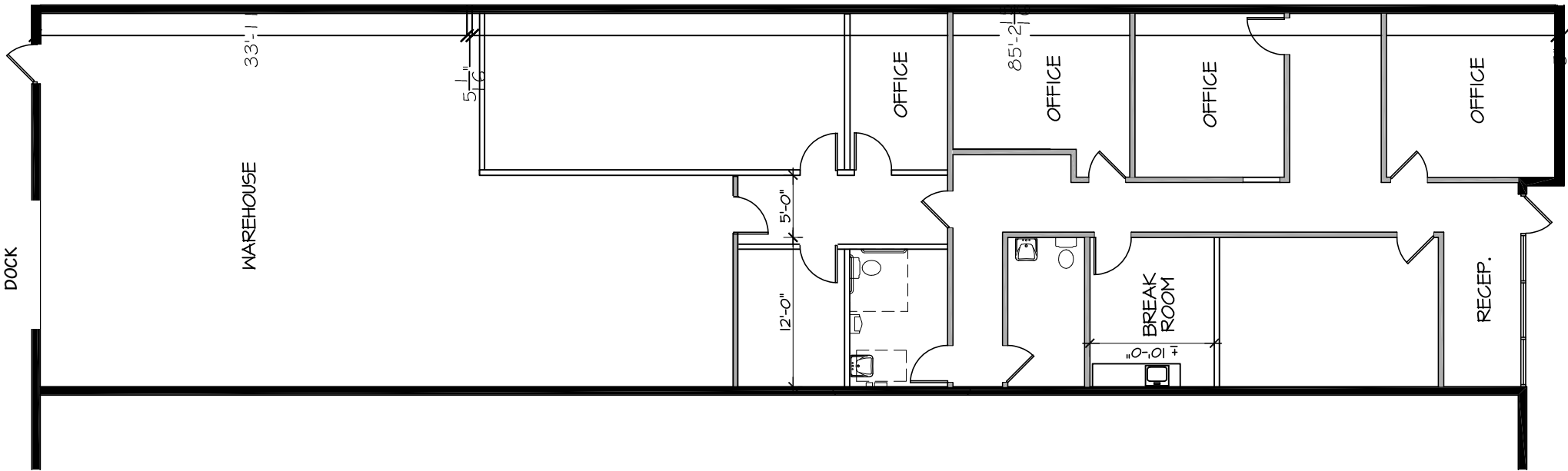
Bo Keefer
bkeefer@hutkin.com
Direct 314.708.1258
Cell 314.973.1242

Tony Giarratano
tony@hutkin.com
Direct 314.708.4922
Cell 314.276.2352

Lakefront

13601-13633 Lakefront Drive
Earth City, MO 63045

3,690 SF EARTH CITY OFFICE / WAREHOUSE AVAILABLE FOR LEASE



13607 LAKEFRONT DR
3,690 SF

Lakefront

13601-13633 Lakefront Drive
Earth City, MO 63045

3,690 SF EARTH CITY OFFICE / WAREHOUSE AVAILABLE FOR LEASE

