



FOR SALE OR GROUND LEASE

3.54 Acres • Zoned C-2

Curb cut on Hwy 20/81 (Expansion in progress)

Regency Plaza Boulevard, McDonough GA, Exit 218 of I-75 South



DAVID W. AYNES
404-348-4448
david@atlantaleasing.com



**ATLANTA LEASING
& INVESTMENT**



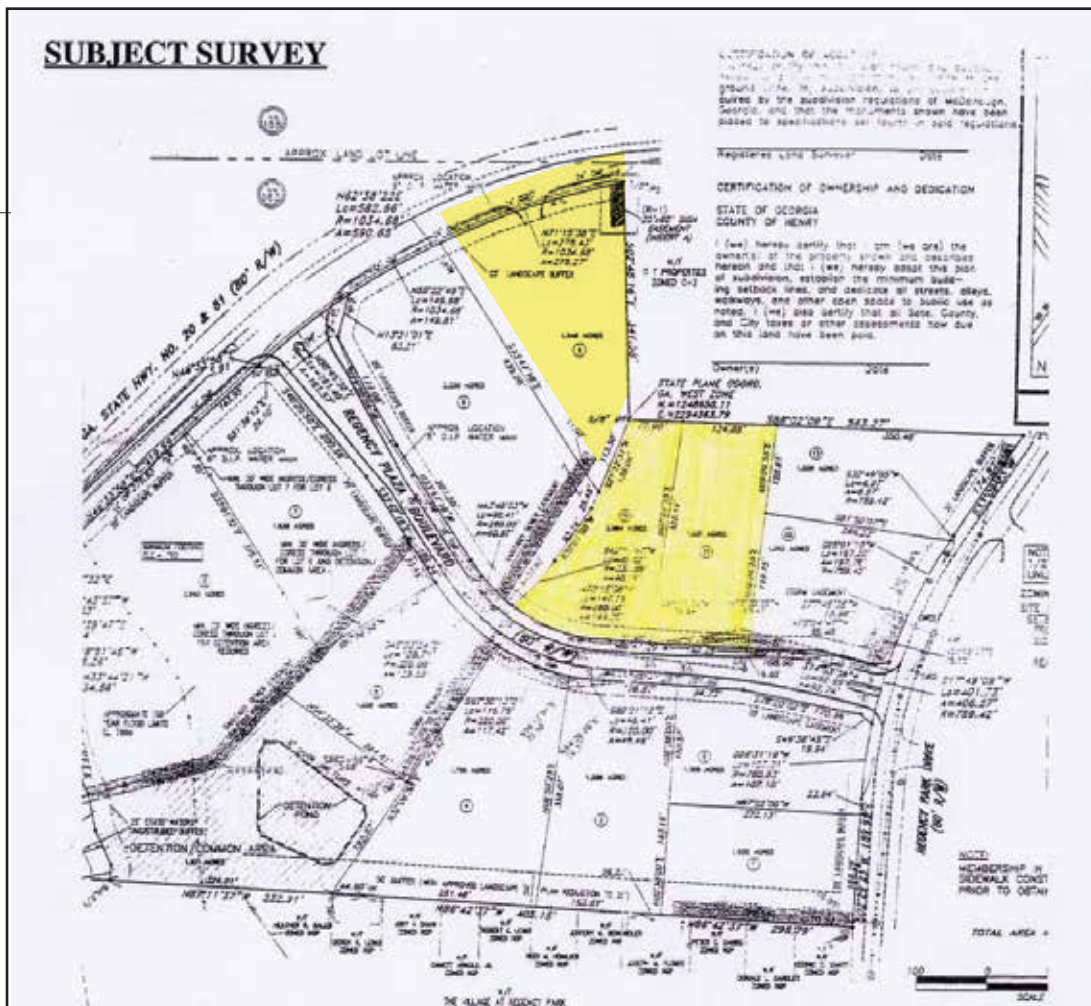
FOR SALE OR GROUND LEASE

3.54 Acres • Zoned C-2

Curb cut on Hwy 20/81 (Expansion in progress)

Regency Plaza Boulevard, McDonough GA, Exit 218 of I-75 South

- 3.54 Acres Zoned C-2
- Curb cut on Regency Plaza
- Full Diamond Interchange within 2,500 feet
- Curb cut on 20/81
22,000 vehicles per day
- Located east of the intersection of Georgia Hwy 81/20 and I-75
- Located adjacent to Piedmont Urgent Care, Resurgeons, Gold's Gym, 3 Dollar Cafe
- Exit 218 of the I-75 McDonough Hampton 81/20
- 350+/- linear feet frontage on Regency Plaza Blvd.
- Two signaled entrance/exits



DAVID W. AYNES

404-348-4448

david@atlantaleasing.com



ATLANTA LEASING
& INVESTMENT