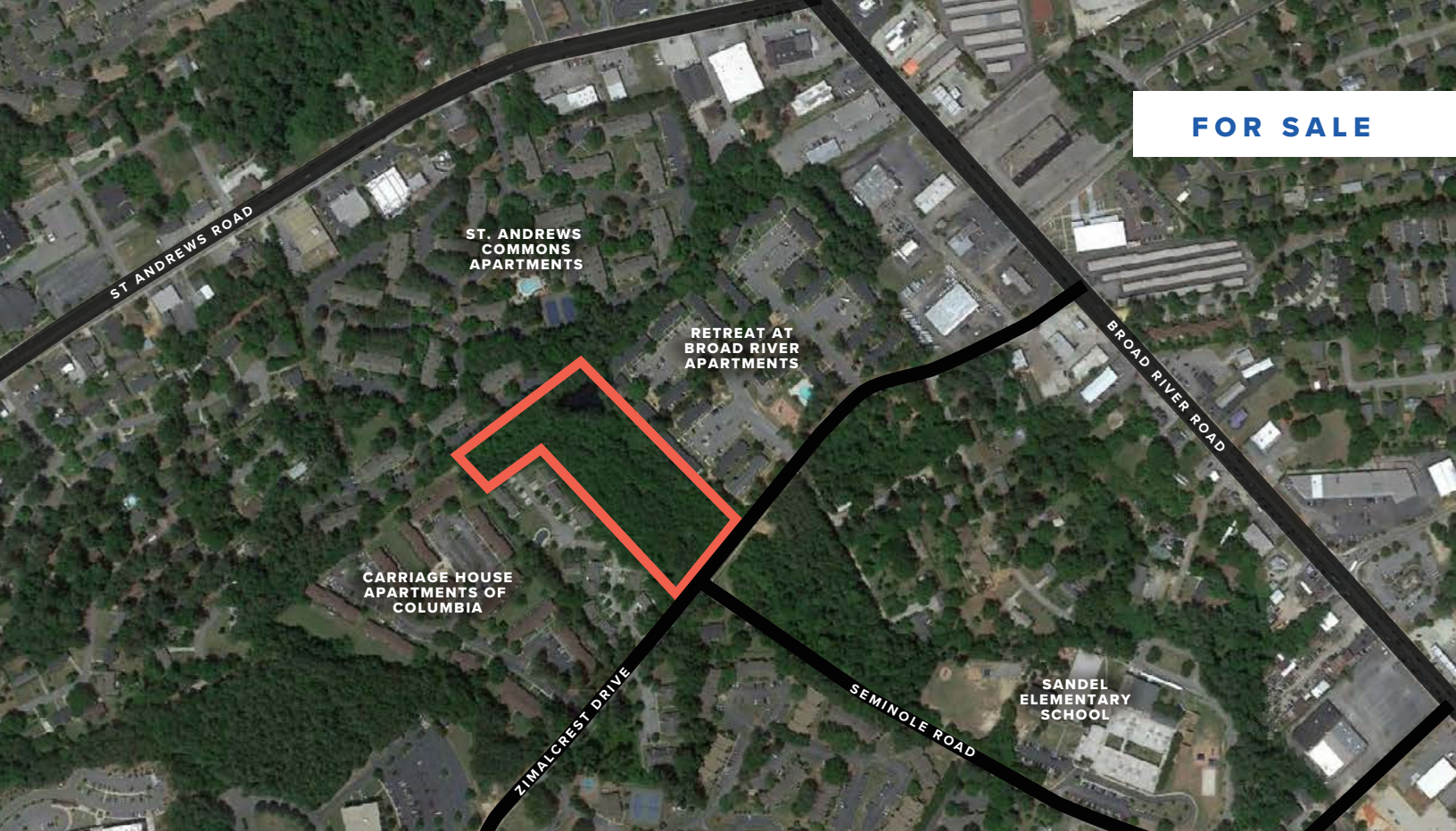


FOR SALE

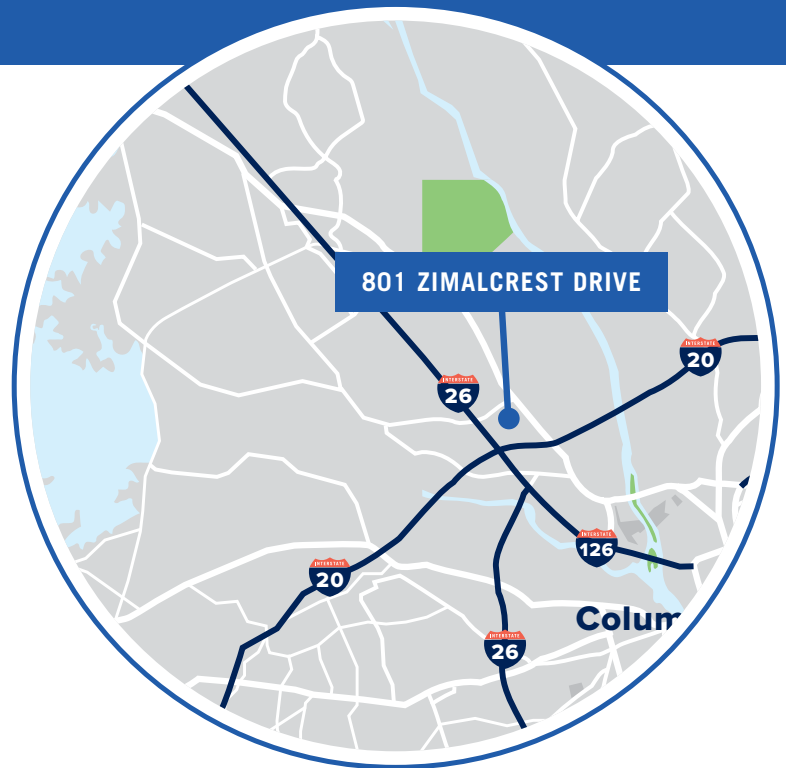


# 801 Zimalcrest Drive COLUMBIA, SC

📍 SUBMARKET: ST. ANDREWS

## ±5.32 AC of Land Available for Sale

- Prime multi-family development lot
- Surrounded by successful multi-family development complexes
- Located one mile from I-26 off Broad River Road
- 10 minutes from Downtown Columbia
- ZONING:** Residential / high-density
- SALE PRICE:** \$225,000



### FOR MORE INFO, CONTACT

**ROGER WINN, SIOR** | Partner | [rwinn@trinity-partners.com](mailto:rwinn@trinity-partners.com) | 803-567-1455  
**BRADEN SHOCKLEY** | Associate Broker | [bshockley@trinity-partners.com](mailto:bshockley@trinity-partners.com) | 803-567-1373

