

38500 W. NINE MILE ROAD
FARMINGTON HILLS, MICHIGAN

RETAIL FOR SALE
7,948 Square Feet Available



**SIGNATURE
ASSOCIATES**
KNOW SIGNATURE | KNOW RESULTS

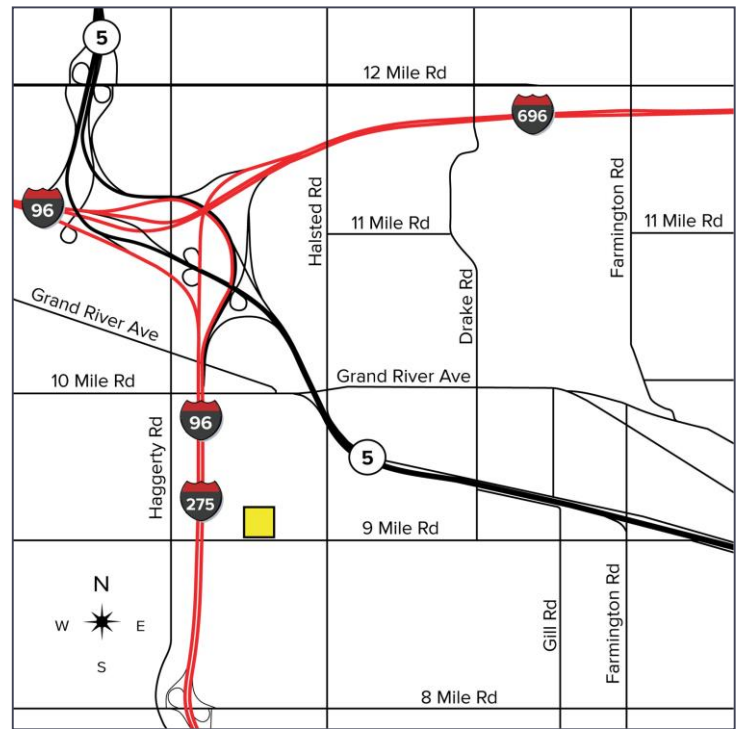
BANQUET/SOCIAL CLUB



PROPERTY FEATURES

- 7,948 available square feet
- Zoned MM
- 65 parking spaces
- Features swimming pool, tennis court, basketball court, and playground
- Sale Price: \$1,100,000 (\$138.40/sq.ft.)

Comments: Sale includes 9.75 acres, 7,948 sq.ft. club house, and entertainment facility (great for flexible use). Beautiful secluded location off of Nine Mile Road. Excellent redevelopment opportunity for developers with mixed uses, surrounded by trees, housing developments and apartments.



For more information, please contact:

MARVIN PETROUS
(248) 359 0647

mpetrous@signatureassociates.com

STEVE GORDON
(248) 948 0101

sgordon@signatureassociates.com

SIGNATURE ASSOCIATES
One Towne Square, Suite 1200
Southfield, MI 48076
www.signatureassociates.com

38500 W. Nine Mile Road – Farmington Hills, MI

Retail For Sale

7,948
Square Feet
AVAILABLE

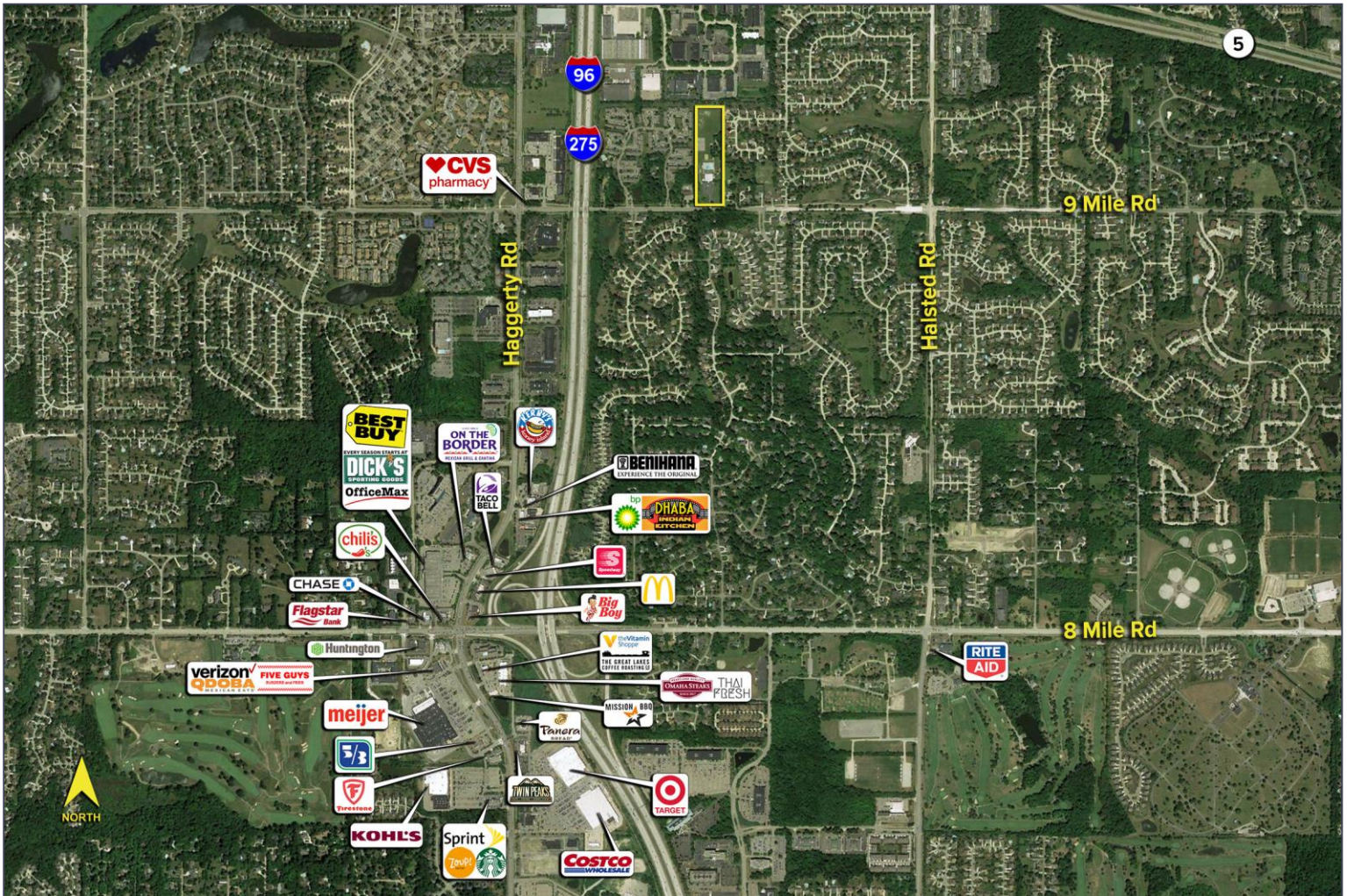


DEMOGRAPHICS

	POPULATION	MED. HH INCOME
1 MILE	9,249	\$103,642
3 MILE	67,120	\$86,796
5 MILE	189,790	\$93,613

TRAFFIC COUNTS (TWO-WAY)

12,045	9 Mile E. of Haggerty Rd 2-Way
10,898	9 Mile W. of Haggerty Rd 2-way
178,611	I-96 N. of 9 Mile 2-Way
188,400	I-96 S. of 9 Mile 2-Way



For more information, please contact:

MARVIN PETROUS

(248) 359 0647

mpetrous@signatureassociates.com

STEVE GORDON

(248) 948 0101

sgordon@signatureassociates.com

SIGNATURE ASSOCIATES

One Towne Square, Suite 1200

Southfield, MI 48076

www.signatureassociates.com