



# BAYPORT

## LOGISTICS PARK

Pasadena, Texas

### Building Information:

Located in Bayport North Industrial Park

175,032 SF

Office space - build to suit

Trailer parking

Rail served

130' truck court

Oversized drive-in ramps (12' x 16')

27 dock doors

ESFR sprinkler system

32' clear height

60' speed bay

Abundant employee parking



Sample Building Image

### Proximity to Major Thoroughfares:

± 4 miles to Highway 225

± 5 miles to Barbour's Cut Terminal

± 4.5 miles to Bayport Terminal

± 3.5 miles to Highway 146

### FOR LEASING INFORMATION:

#### B. Kelley Parker III, SIOR

Vice Chairman

+1 713 963 2896

kelley.parker@cushwake.com

#### John F. Littman, SIOR

Executive Managing Director

+1 713 963 2862

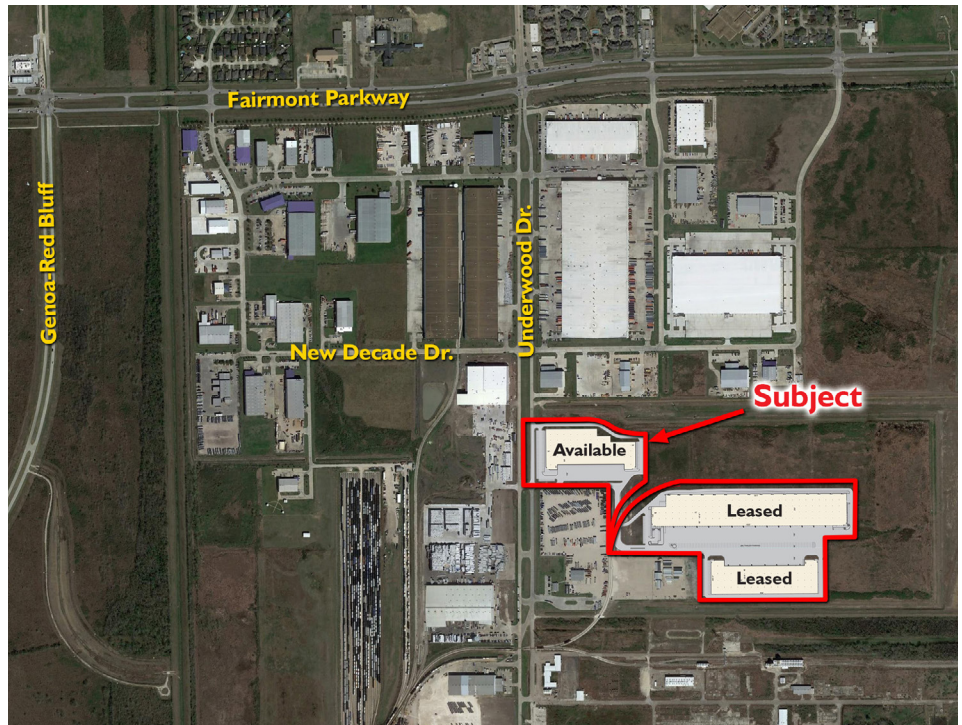
john.littman@cushwake.com

#### Coe Parker, SIOR

Senior Director

+1 713 963 2825

coe.parker@cushwake.com



Site Location

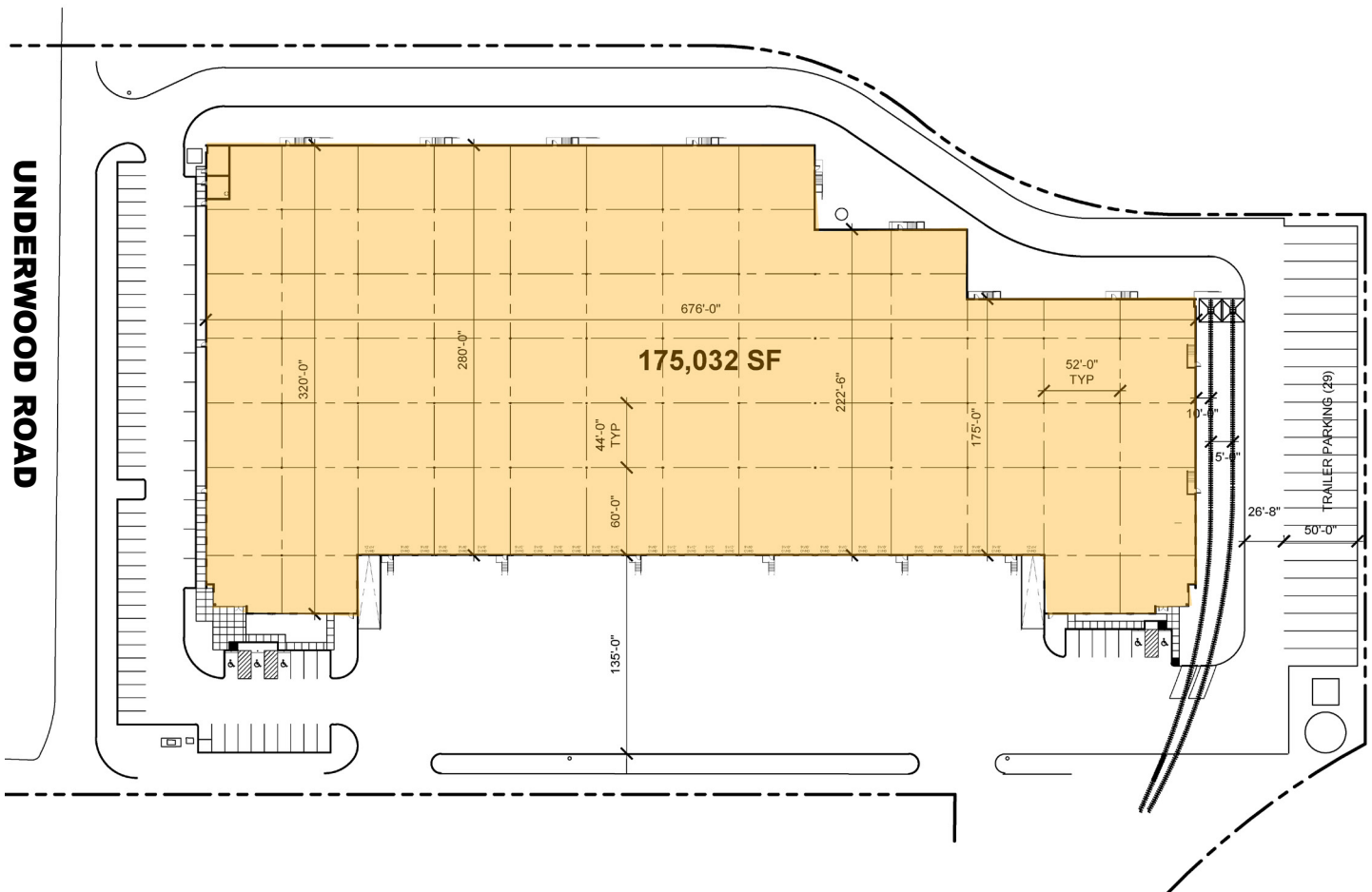




# BAYPORT

LOGISTICS PARK

## SITE PLAN



**FOR LEASING  
INFORMATION:**



**B. Kelley Parker III, SIOR**

Vice Chairman

+1 713 963 2896

kelley.parker@cushwake.com

**John F. Littman, SIOR**

Executive Managing Director

+1 713 963 2862

john.littman@cushwake.com

**Coe Parker, SIOR**

Senior Director

+1 713 963 2825

coe.parker@cushwake.com

