

ROBBEN INDUSTRIAL PARK

LOT 12, 15321 S CORNICE ST, OLATHE, KS 66062



PRICE REDUCTION!



HIGHLIGHTS

- Lot 12 (2.59 Ac)
- Priced at \$2.75/SF
- Zoned M-2 (General Industrial District)
- Great Access to I-35 & Hwy 169
- All Utilities to Site

FOR SALE

LOT 12

\$310,256

DEMOGRAPHICS

	3 Mile	5 Mile	10 Mile
2019 ESTIMATED POPULATION	3,207	64,400	136,242
2019 MED HOUSEHOLD INCOME	\$79,324	\$83,591	\$91,181

Terry Moody

Office: (913) 945-3727

Mobile: (913) 558-2083

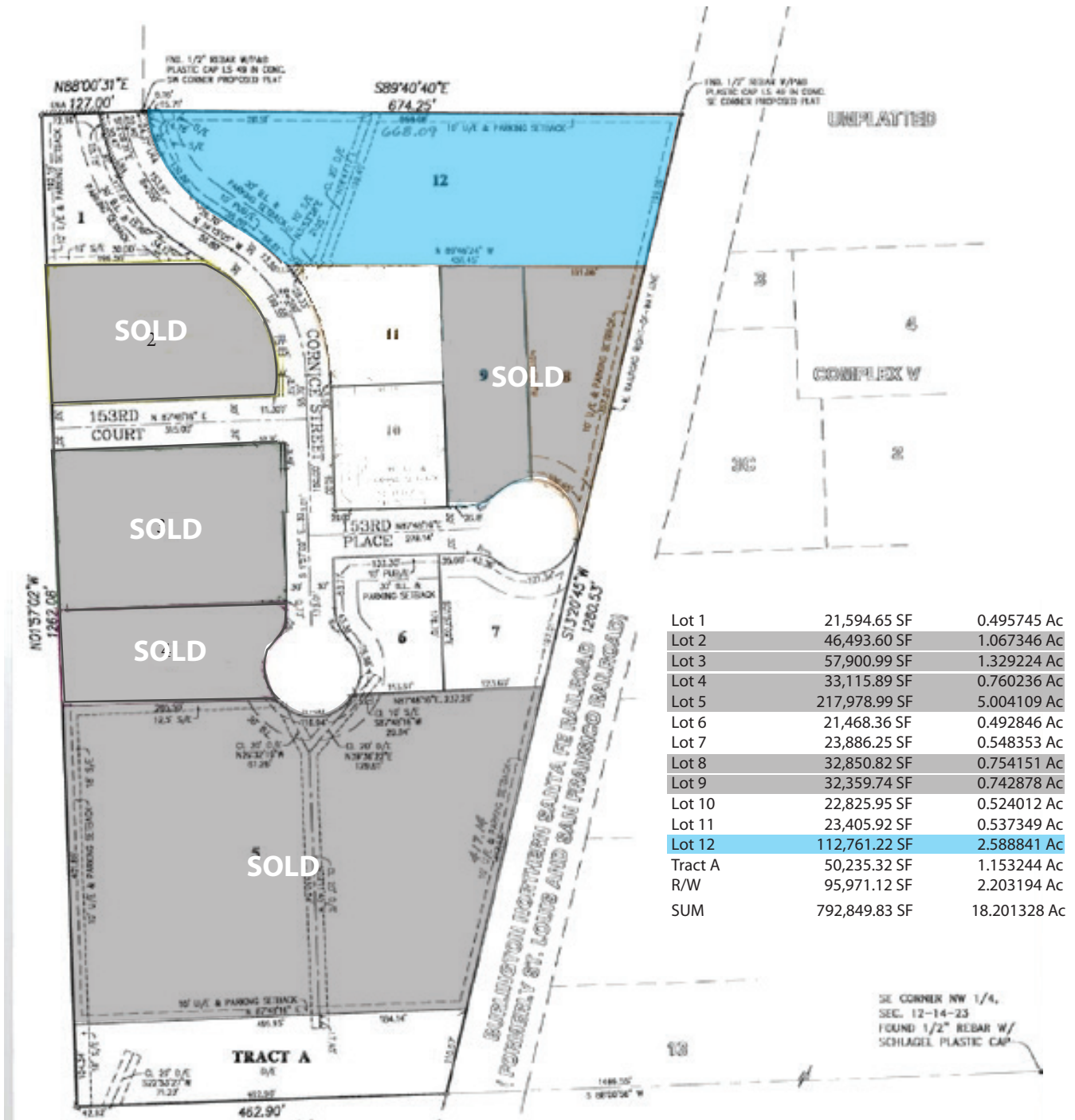
Email: moody@reececommercial.com

The information above has been obtained from sources believed reliable. While we do not doubt its accuracy we have not verified it and make no guarantee, warranty or representation about it. It is your responsibility to independently confirm its accuracy and completeness. Any projections, opinions, assumptions, or estimates used are for example only and do not represent the current or future performance of the property. You and your advisors should conduct a careful, independent investigation of the property to determine to your satisfaction the suitability of the property for your needs.

© 2019

ROBBEN INDUSTRIAL PARK

LOT 12, 15321 S CORNICE ST, OLATHE, KS 66062



Terry Moody

Office: (913) 945-3727

Mobile: (913) 558-2083

Email: moody@reececommercial.com

The information above has been obtained from sources believed reliable. While we do not doubt its accuracy we have not verified it and make no guarantee, warranty or representation about it. It is your responsibility to independently confirm its accuracy and completeness. Any projections, opinions, assumptions, or estimates used are for example only and do not represent the current or future performance of the property. You and your advisors should conduct a careful, independent investigation of the property to determine to your satisfaction the suitability of the property for your needs.