

For Lease

Owned & Managed by



Office on the water, featuring:

- Excellent waterfront views overlooking the Delaware River
- Abundant, free parking
- Scenic courtyard
- On-site property management
- Private entrances to Suites 104 & 102
- Located right next to Mercer County Waterfront Park
- Immediate accessibility to Rt. 29, I-195 and I-295
- Easy access to Trenton
- Short walk from Light Rail Station
- 1.7 miles to New Jersey State House

**YOUR
LOGO
HERE**



30,394 RSF

400 Riverview Plz
Trenton, NJ

Thomas Romano
+1 609 658 1589

thomas.romano@am.jll.com

First Floor: Suite 102 (1,190 RSF) and Suite 104 (1,563 RSF)
Second Floor: Suite 201 (7,316 RSF) and Suite 205 (1,397 RSF)



You **don't** have to be on the Hudson for waterfront views



Waterfront views over the Delaware River



Ample conference space



Interior Offices



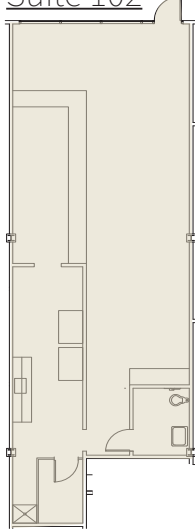
Reception Area



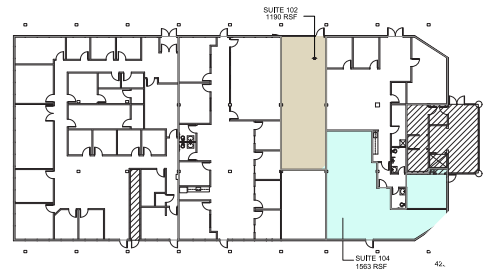
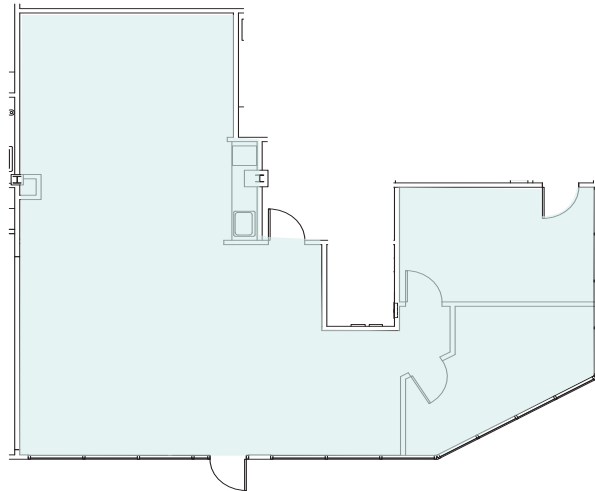
Corner office views

**FIRST FLOOR - Suite 102 (1,190 RSF)
Suite 104 (1,563 RSF)**

Suite 102

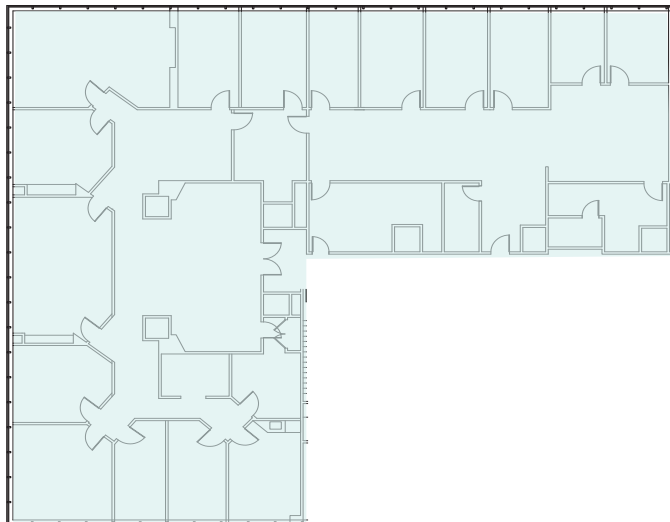


Suite 104

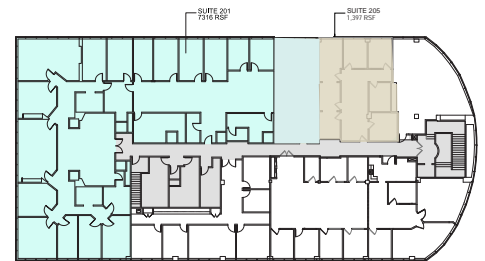
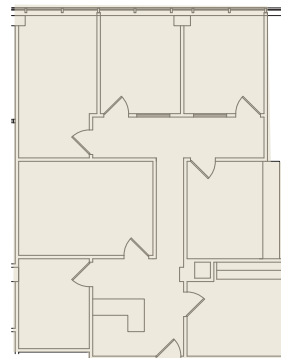


**SECOND FLOOR - Suite 201 (7,316 RSF)
Suite 205 (1,397 RSF)**

Suite 201



Suite 205



EXCLUSIVE LEASING AGENTS:

Thomas Romano
+1 609 658 1589
thomas.romano@am.jll.com

TJ Romano
+1 609 658 7266
tj.romano@am.jll.com



©2020 Jones Lang LaSalle IP, Inc. All rights reserved. All information contained herein is from sources deemed reliable; however, no representation is made as to the accuracy of the information furnished herein and same is submitted subject to errors, omissions, change of prices, rental or other conditions, prior sale, lease, sublease, and/or withdrawal without notice.