

# OFFICE SPACE FOR LEASE

## ACASO OFFICE BUILDING

900 AVENIDA ACASO, CAMARILLO, CA



### PROPERTY HIGHLIGHTS

**AVAILABLE:** 473 - 1,241 RSF

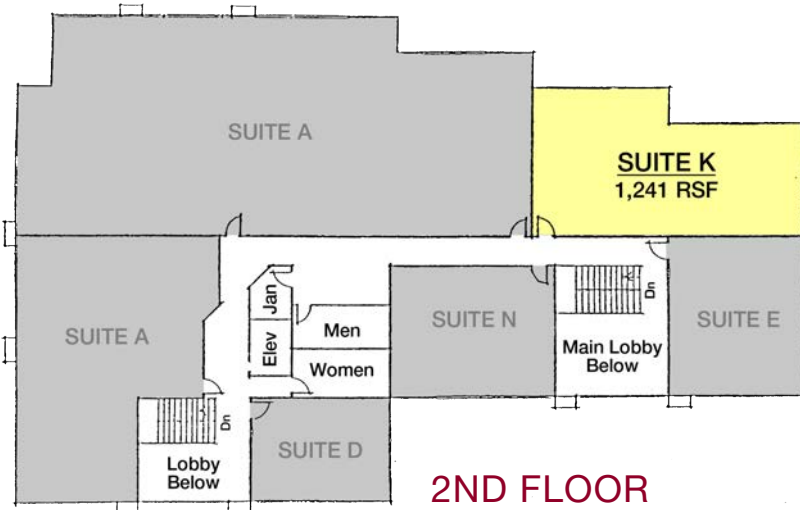
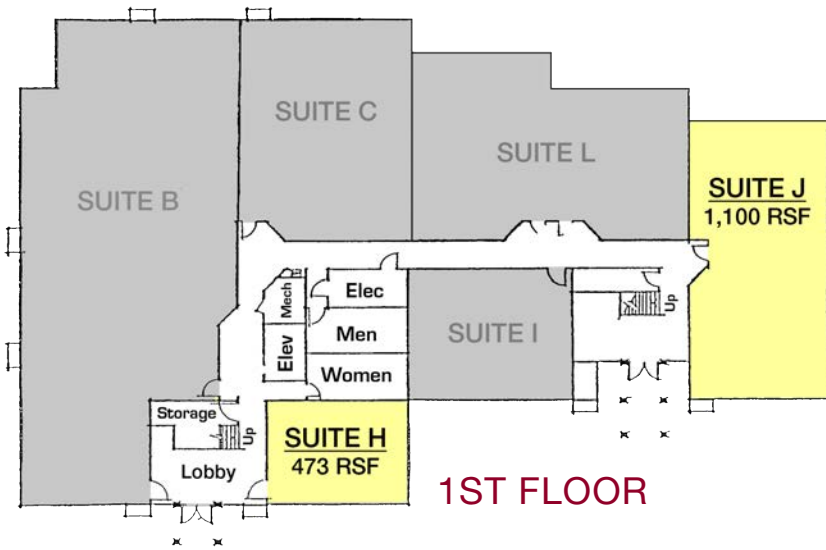
- Office Space Available for Lease
- Below Market Lease Rate
- Easy Access from 101 Freeway
- Close to Restaurant & Retail Amenities
- Ample Parking
- Move-In Ready
- Verizon FiOS Available

**LEE & ASSOCIATES®**  
COMMERCIAL REAL ESTATE SERVICES



ACASO OFFICE BUILDING  
900 AVENIDA ACASO

MANAGEMENT  
310-980-8380



NOT TO SCALE

**AVAILABILITY**

SUITE	SIZE RSF	RATE PSF	RATE PER MO
H	473	\$1.50 MG	\$710
J	1,100	\$1.50 MG	\$1,650
K	1,241	\$1.50 MG	\$1,862

AVAILABLE SF ..... 473 - 1,241 RSF

TOTAL BLDG SF ..... 15,164 SF

ZONING ..... M1

YEAR BUILT ..... 1984

FLOORS ..... 2

ELEVATOR ..... Yes

PARKING ..... 4.68/1000

**CONTACT**

**DAVID KIM**  
Principal  
Lic. 01483179  
805.626.1234 | Direct  
dkim@lee-re.com

Lee & Associates®  
LA North/Ventura, Inc.  
Corporate ID #01191898  
A Member of the Lee & Associates  
Group of Companies  
1000 Town Center Drive, Suite 310  
Oxnard, CA 93036  
Tel 805.626.1200 | Fax 805.413.7000  
www.lee-associates.com



COMMERCIAL REAL ESTATE SERVICES  
No warranty or representation is made to the accuracy of the foregoing information. Terms of sale or lease and availability are subject to change or withdrawal without notice.

**AERIAL VIEW**

