



211 N. KIT AVE

211 N. KIT AVE, CALDWELL, ID 83605

INDUSTRIAL

FOR SALE



PROPERTY HIGHLIGHTS

- 700 SF office space
- Entire site is fenced with 50% concrete and 50% gravel
- Four (4) Dock-hi & one (1) 10' (H) X 16' (W) grade level loading doors
- Space Heaters and lighting in the warehouse

PROPERTY INFORMATION:

Sale Price: **\$495,000**

Lot Size: **2.06 Acres**

Building Size: **6,000 SF**

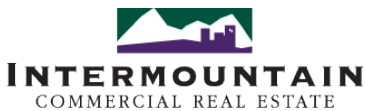
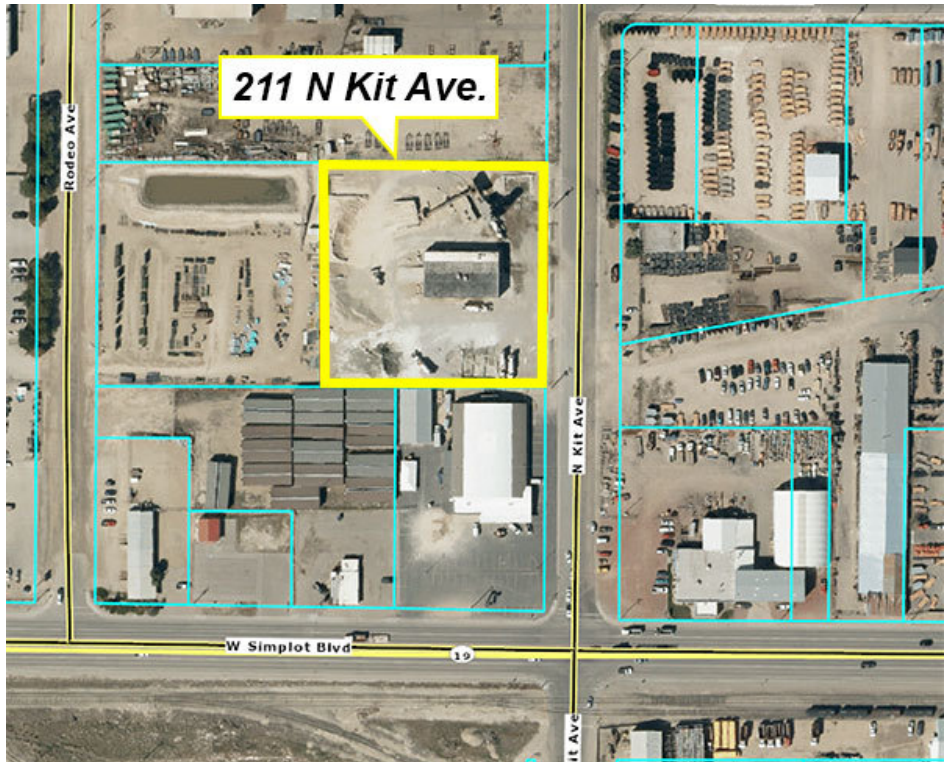
Grade Level Doors: **1**

Dock High Doors: **4**

Zoning: **Industrial**

Market: **Caldwell**

Cross Streets: **N. Kit Ave and W. Simplot Blvc**



380 E. Parkcenter Boulevard
Suite 290
Boise, ID 83706
www.icrellc.com
(208) 429.8603 / office / (208) 429-8604 fax

Gary Buentgen, SIOR, CCIM
gary@icrellc.com
o / 208.286.2264
c / 208.724.2222

LISTING AGENTS:
Christian Harris
christian@icrellc.com
o / 208.286.2270
c / 208.860.5869

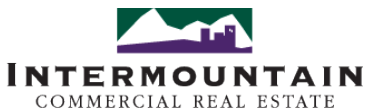


211 N. KIT AVE
211 N. KIT AVE, CALDWELL, ID 83605

ADDITIONAL PHOTOS



INDUSTRIAL



380 E. Parkcenter Boulevard
Suite 290
Boise, ID 83706
www.icrellc.com
(208) 429.8603 / office / (208) 429-8604 fax

Gary Buentgen, SIOR, CCIM
gary@icrellc.com
o / 208.286.2264
c / 208.724.2222

LISTING AGENTS:

Christian Harris
christian@icrellc.com
o / 208.286.2270
c / 208.860.5869



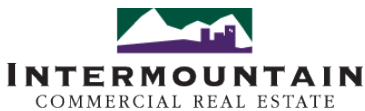
211 N. KIT AVE

211 N. KIT AVE, CALDWELL, ID 83605

LOCATION MAPS



INDUSTRIAL



380 E. Parkcenter Boulevard
Suite 290
Boise, ID 83706
www.icrellc.com
(208) 429.8603 / office / (208) 429-8604 fax

Gary Buentgen, SIOR, CCIM
gary@icrellc.com
o / 208.286.2264
c / 208.724.2222

LISTING AGENTS:

Christian Harris
christian@icrellc.com
o / 208.286.2270
c / 208.860.5869