

Office Space For Lease

// **601 W MAXWELL**

Spokane, WA 99201



// PRESENTED BY:

**STEPHEN BARBIERI**

COMMERCIAL LEASING & SALES MANAGER

509.344.4919

SBARBIERI@G-B.COM





## // PROPERTY SUMMARY



### PROPERTY DESCRIPTION

Fantastic and affordable office space for lease on Spokane's North Bank. Just blocks from the new ONE Spokane sports stadium and downtown.

### PROPERTY HIGHLIGHTS

- Modified Gross: Tenant pays pro rata share of water, sewer, garbage & electricity (approx. \$215/mo)
- 3 offices, reception, open area, bathroom, storage closet
- Free Onsite Parking
- Ramp entrance to Suite (2nd floor)
- Close to Riverfront Park, Kendall Yards, Spokane Arena, The Podium and Spokane County Campus

SPACES	LEASE RATE	SPACE SIZE
<b>Suite 3</b>	\$1,250 per month	1,100 SF

DEMOGRAPHICS	1 MILE	3 MILES	5 MILES
<b>Total Households</b>	5,777	55,013	111,594
<b>Total Population</b>	13,737	125,763	260,663
<b>Average HH Income</b>	\$37,862	\$46,285	\$50,573

// PRESENTED BY:

**STEPHEN BARBIERI**  
COMMERCIAL LEASING & SALES MANAGER  
509.344.4919  
SBARBIERI@G-B.COM





601 W Maxwell // Spokane, WA 99201

## // ADDITIONAL PHOTOS



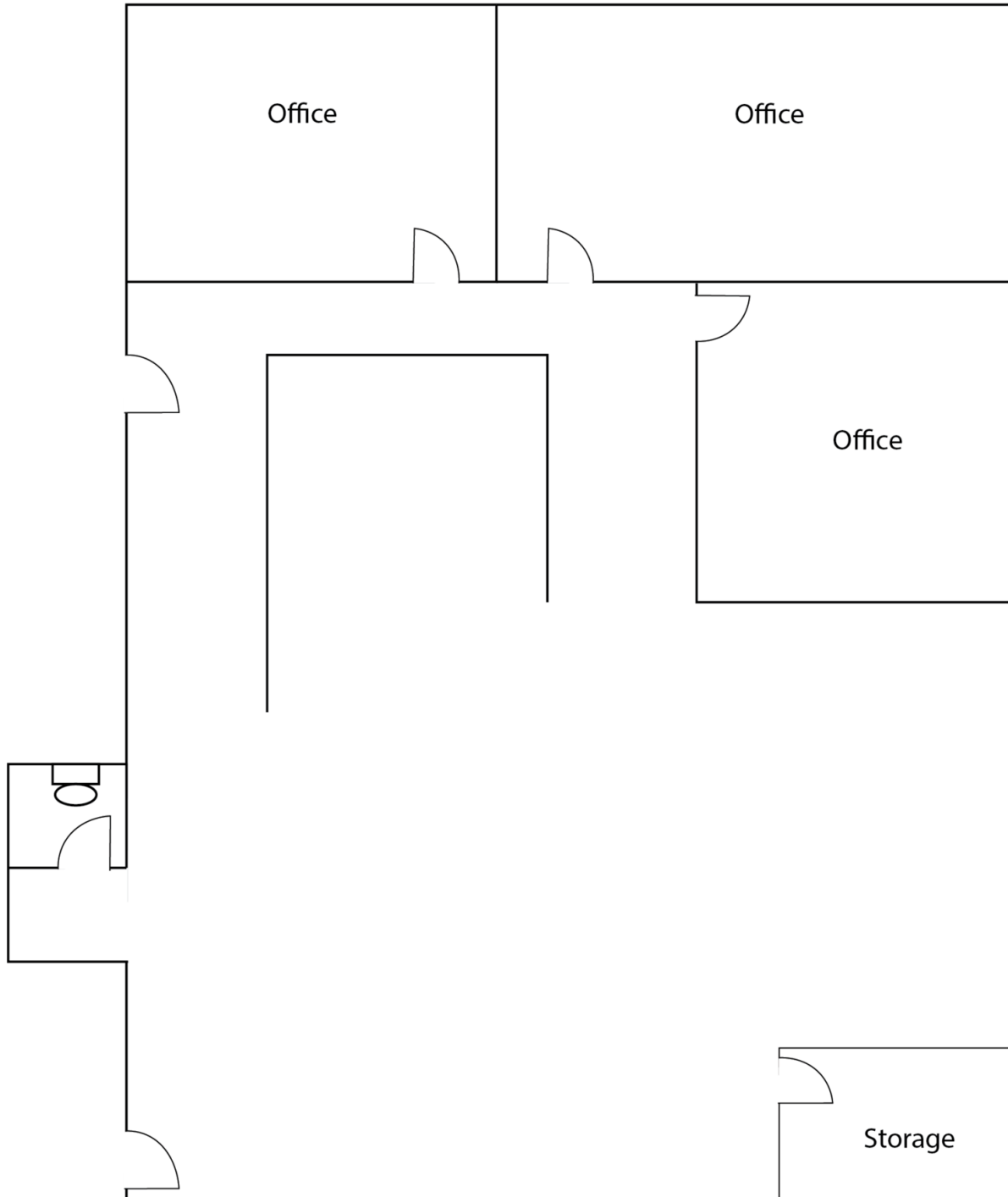
// PRESENTED BY:

**STEPHEN BARBIERI**  
COMMERCIAL LEASING & SALES MANAGER  
509.344.4919  
SBARBIERI@G-B.COM



# // FLOOR PLAN

## 601 W Maxwell Suite 3



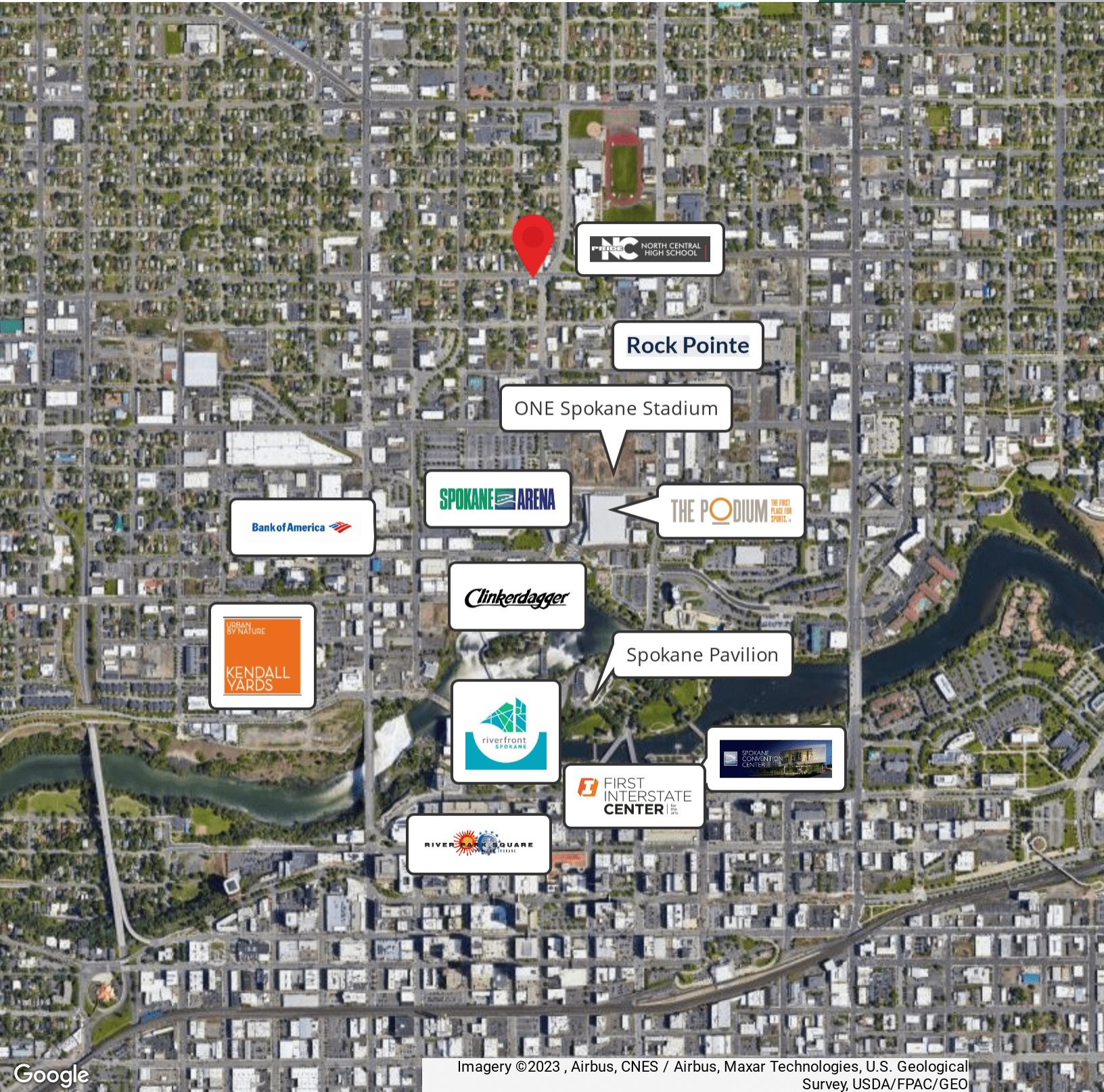
// PRESENTED BY:

**STEPHEN BARBIERI**  
COMMERCIAL LEASING & SALES MANAGER  
509.344.4919  
SBARBIERI@G-B.COM





# // RETAILER MAP



Google

Imagery ©2023 , Airbus, CNES / Airbus, Maxar Technologies, U.S. Geological Survey, USDA/FPAC/GEO

// PRESENTED BY:

**STEPHEN BARBIERI**  
COMMERCIAL LEASING & SALES MANAGER  
509.344.4919  
SBARBIERI@G-B.COM

