

Available Office Space
Corinth Office Building
8340 Mission Rd
Prairie Village, KS 66208



W

W A T E R F O R D

PROPERTY COMPANY, LLC

Corinth Office Building

Features | 8340 Mission Road



- Up to 4,180 RSF available.
- 2020 full-service rate: \$22.00 per RSF.
- Negotiable renovation allowances.
- Flexible terms.
- Load Factor: 12%.
- Spectrum and Google service available.
- Immediate proximity to Corinth retail and restaurants.

- | | |
|---------------|---------------------------|
| * Panera | * Salty Iguana |
| * First Watch | * Hattie's Coffee Shop |
| * Urban Table | * Johnny's |
| * BRGR | * Great Harvest Bread Co. |
| * Arby's | * Spin Pizza |
| * Subway | |

W

WATERFORD
PROPERTY COMPANY LLC

Lauren Cattanch

Cell: (913) 579-8179

lauren.cattanch@waterfordproperty.net

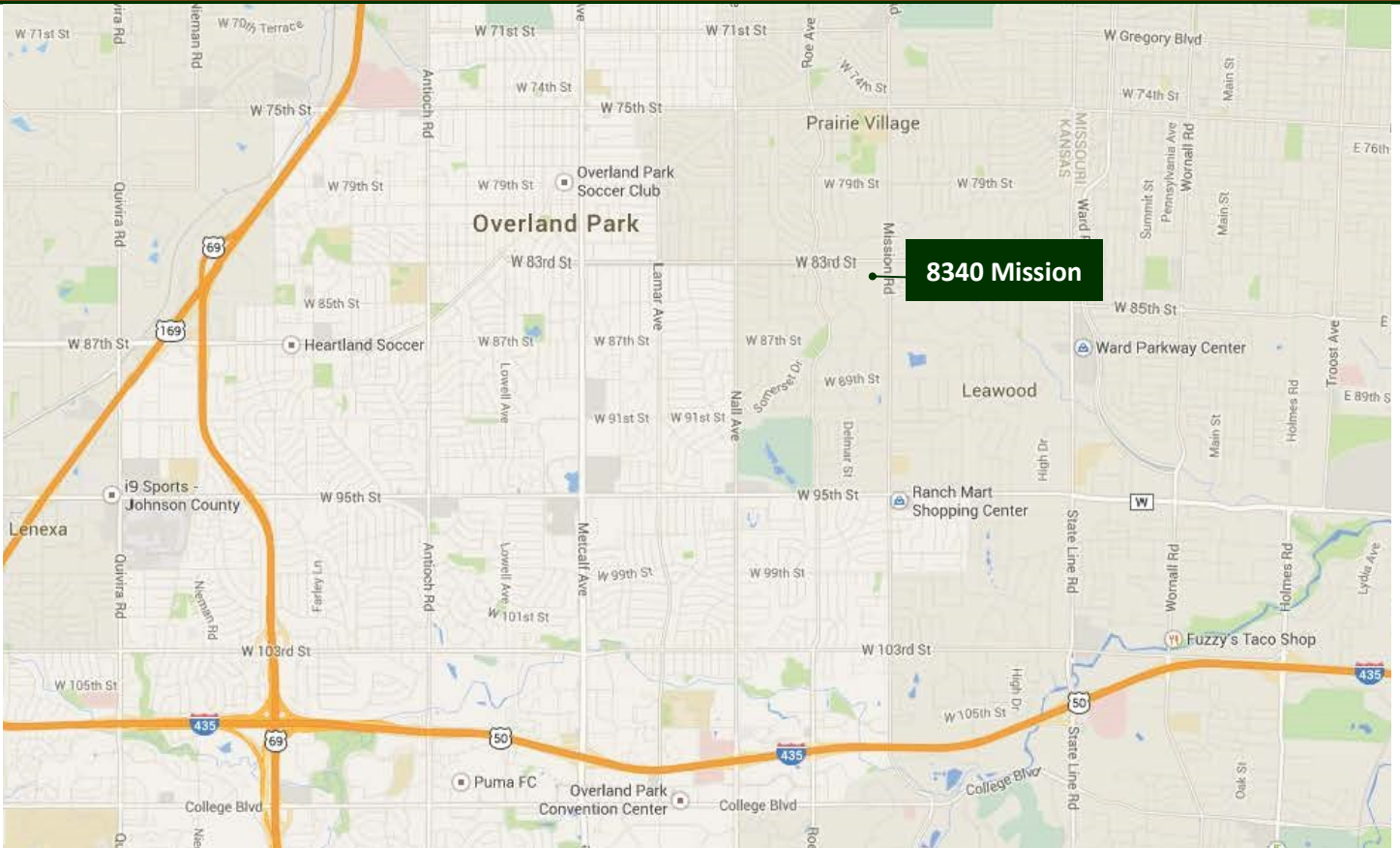
Bob Cattanch

Cell: (913) 219-2109

bob.cattanch@waterfordproperty.net

Corinth Office Building

Amenities | 8340 Mission Road



In close proximity to:

Restaurants

Arby's
Blue Moose Bar & Grill
BRGR Kitchen & Grill
Café Provence
Caffetteria Modern Café
Chick Fil-A
Eat Fit Go Healthy Foods
First Watch
Joe's Cellar
Johnny's Tavern
Jun's
Mely's Yogurt & Ice Cream
Panera Bread
Salty Iguana
SPIN! Neopolitan Pizza
Subway
T Loft
Tatsu's
Tavern in the Village
Urban Table

Hotels

Courtyard by Marriott KC South
Econo Lodge Inn Suites
Extended Stay America
Homewood Suites by Hilton
Hyatt Place KC / Overland Park
Convention Center

Banks

BMO Harris Bank
Commerce Bank
Country Club Bank
First Federal Bank of Kansas City
First National Bank
Great Southern Bank
MoBank
UMB Bank
U.S. Bank

Child Care

Enchanted Garden
Kiddi Kollege
Premier Learning

Shopping/Entertainment

Amy's Hallmark Shop
Bag & Baggage
Better Cheddar
Chico's
Clique Boutique
Corinth Square
Foo's Fabulous Café
Golden & Pine
Hen House Market
Jos. A Bank
Land of Paws
Mission Road Antique Mall
Paolini Garment Company
Ranchmart Shopping Center
The Village

Other

Bijin Salon & Spa
Pinot's Palette
U.S. Post Office

Corinth Office Building

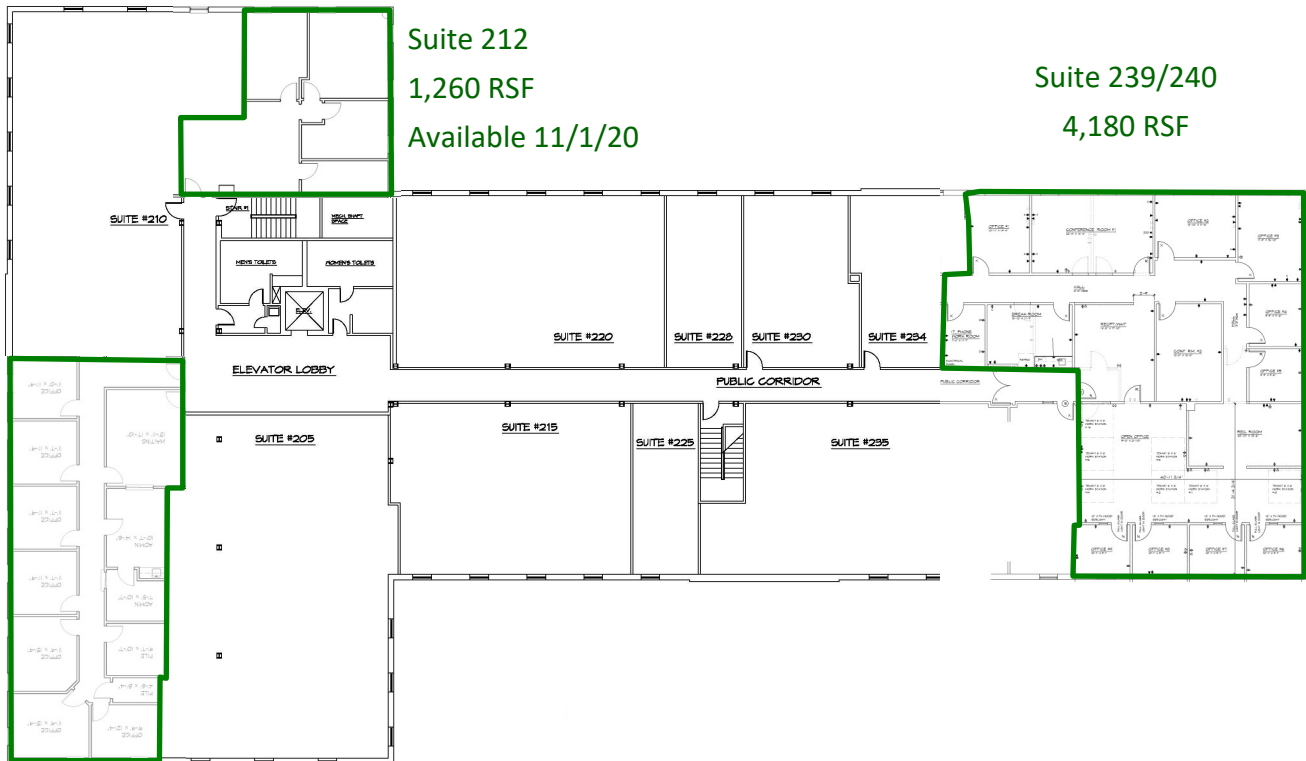
Available Space | 8340 Mission Road



Available Suites

Building	Size
Suite 201	2,443 RSF
Suite 212	1,260 RSF
Suite 239/240	4,180 RSF

2nd Floor



Suite 201
2,443 RSF



WATERFORD
PROPERTY COMPANY LLC

Lauren Cattanach

Cell: (913) 579-8179

lauren.cattanach@waterfordproperty.net

Bob Cattanach

Cell: (913) 219-2109

bob.cattanach@waterfordproperty.net

Information furnished regarding property is from sources deemed reliable but no warranty or representation is made as to the accuracy thereof and same is submitted subject to errors, omissions, prior sale or lease or withdrawal, without notice.