

- AVAILABLE FOR SALE -

INDUSTRIAL LAND

LOCATION: Cherokee Industrial Park
2300 Teepee Drive
Stockton, California

LAND SIZE: 1.97± Acres

COMMENTS:

- ▶ 1.97± acres of PRIME Industrial Land
- ▶ Zoned: I-L (Light Industrial – San Joaquin County)
- ▶ One of the last remaining buildable lots in the established Cherokee Industrial Park
- ▶ Excellent Location offering visibility and immediate access to Highway 99 & Interstate 5 via Crosstown Freeway
- ▶ **SALES PRICE:** \$550,000.00



FOR MORE INFORMATION, CONTACT:

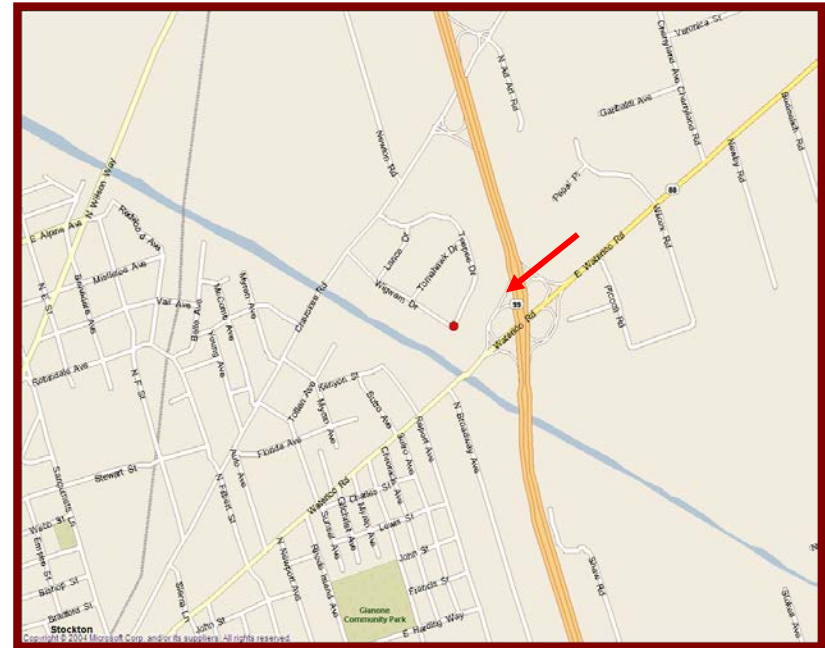
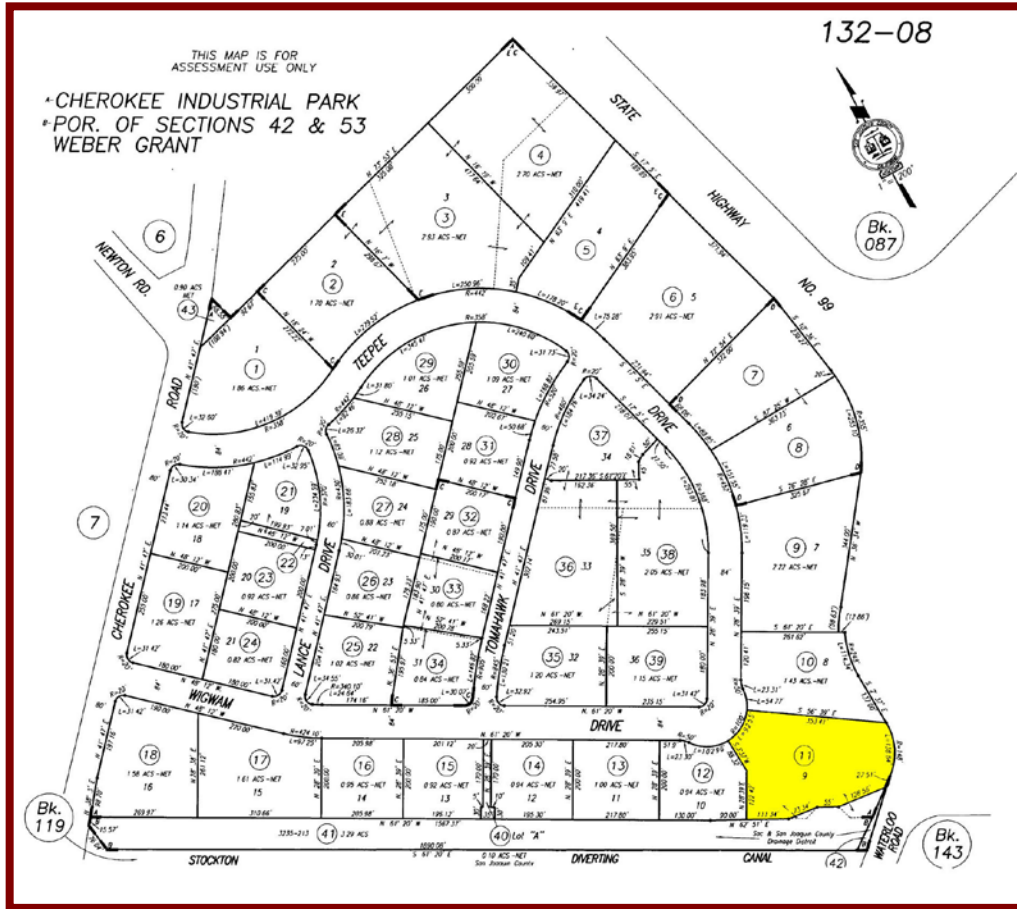


Lee & Associates - Central Valley, Inc.
A Member of the Lee & Associates Group of Companies
241 Frank West Circle, Suite 300, Stockton, CA 95206-4045
(209) 983-1111 / Fax (209) 982-0167

Darren McFadden
BRE #: 01276439
LEE & ASSOCIATES-CENTRAL VALLEY, INC.
Phone: **209-983-6821** / Fax: **209-982-0167**
dmcfadden@lee-associates.com

2300 Teepee Drive – Stockton, CA

LOCATION MAP



FOR MORE INFORMATION, CONTACT:

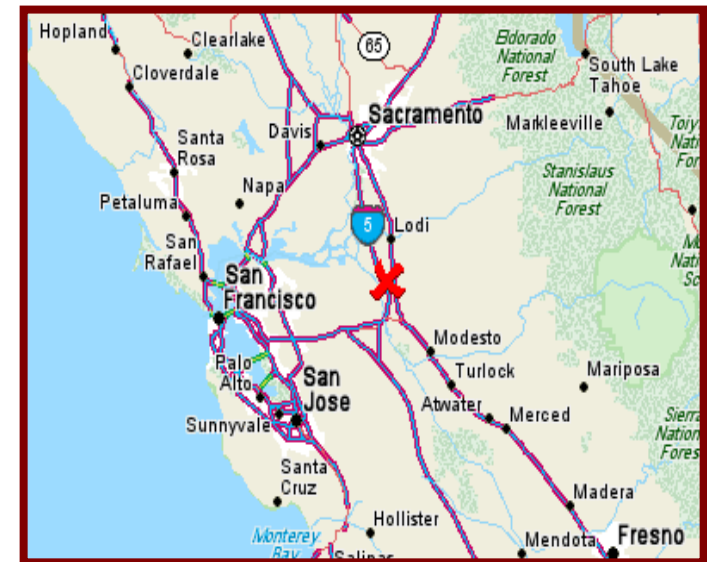
Darren McFadden

BRE #: 01276439

LEE & ASSOCIATES-CENTRAL VALLEY, INC.

Phone: 209-983-6821 / Fax: 209-982-0167

dmcfadden@lee-associates.com



REGIONAL MAP