



SALE/LEASE

User Industrial Building

1821W.33rd Place, Chicago, IL

PROPERTY SPECIFICATIONS

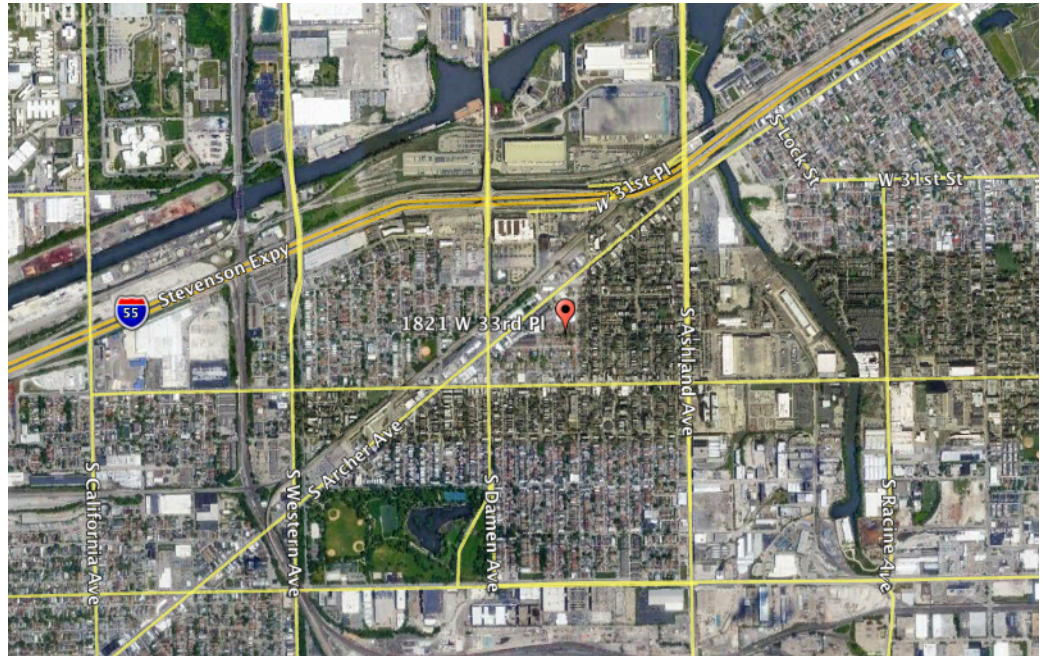
Building Size: 32,001 SF
Mezzanine Space: 5,075 SF
Zoning: C2-2 Motor Vehicle Dist.
Lot Size: 47,855 SF
Clear Height: 16'0
R.E.Taxes: \$46,093.00
Drive In Doors: 4
Heat: Gas
Parking: Heavy-Outside Storage.
Power: 2,000 AMPS



COMMENTS:

Sale or Lease
Minutes from I-55.
Clear Span Building
Visibility From Archer Avenue
Redeveloping Neighborhood.

**DO NOT DISTURB
UCCUPANT.**



PLEASE CONTACT:

Mark Butler
Butler Partners
Office: 630-789-5000
Cell: 630-707-3774
markbutler1@sbcglobal.net
www.butlerpartners.net



100 E. Ogden Avenue, #200
Westmont, IL 60559
Phone: 630-789-5000 Fax: 630-789-5001

Please note: Information is subject to change or withdrawal without further notice. Information is from a source we deem reliable, however no liability is assumed for its accuracy.