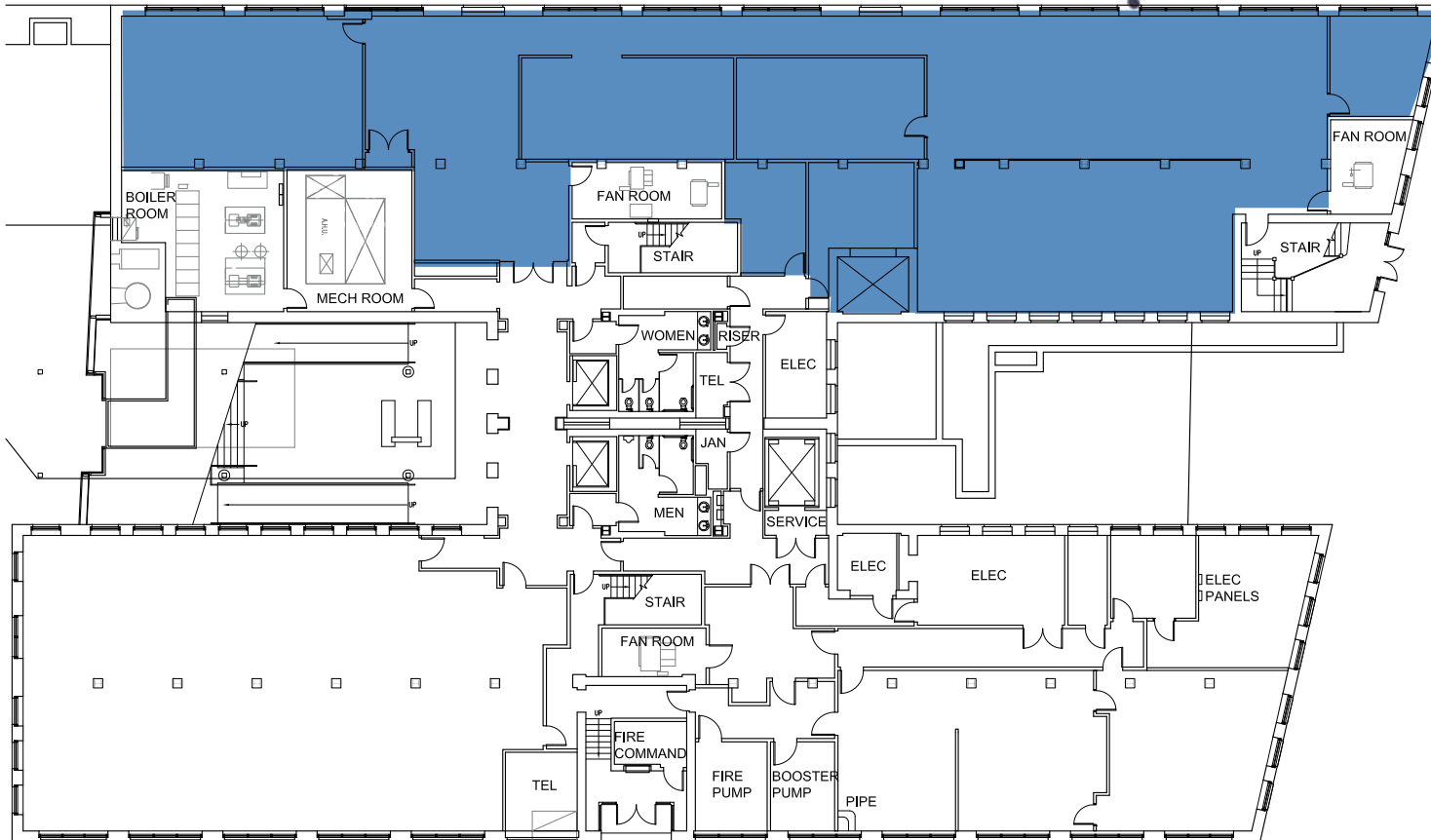


300 A STREET

PART OF THE BRICKS AT FORT POINT

GROUND FLOOR 7,698 SF



LEASING CONTACT INFORMATION

JON FRENI

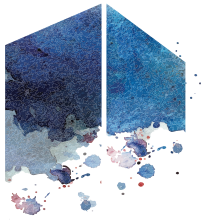
+1 617 912 7044
jon.freni@cbre-ne.com

PETER DOMINSKI

+1 617 912 7048
peter.dominski@cbre-ne.com

SUZANNE BROWN

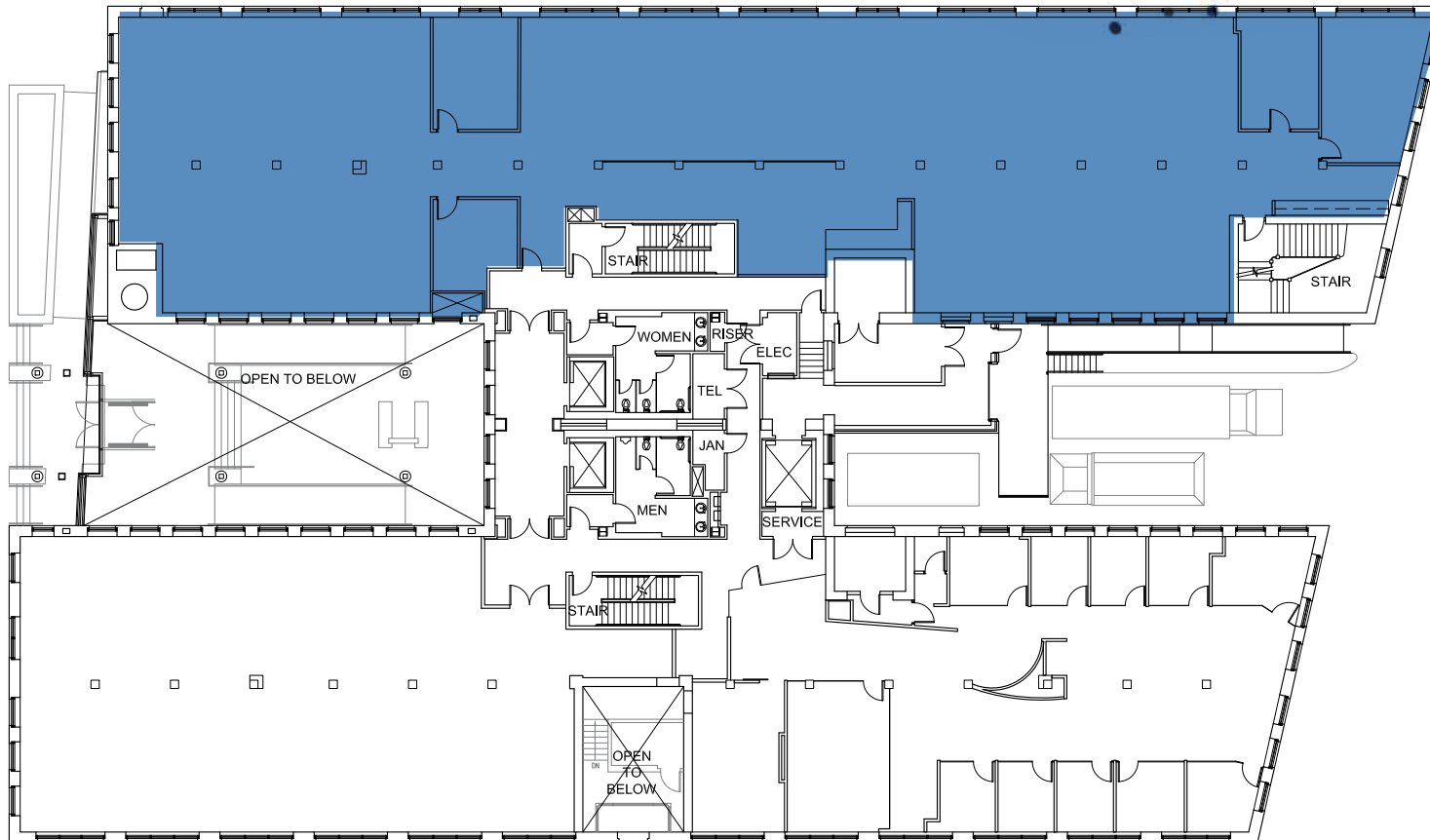
+1 617 912 6931
suzanne.brown@cbre-ne.com



300 A STREET

PART OF THE BRICKS AT FORT POINT

1ST FLOOR 9,670 SF



LEASING CONTACT INFORMATION

JON FRENI

+1 617 912 7044

jon.freni@cbre-ne.com

PETER DOMINSKI

+1 617 912 7048

peter.dominski@cbre-ne.com

SUZANNE BROWN

+1 617 912 6931

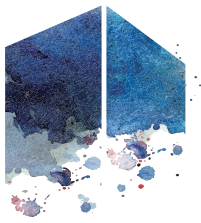
suzanne.brown@cbre-ne.com

© 2017 CB Richard Ellis - N.E. Partners, LP. This information has been obtained from sources believed reliable. We have not verified it and make no guarantee, warranty or representation about it. Any projections, opinions, assumptions or estimates used are for example only and do not represent the current or future performance of the property. You and your advisors should conduct a careful, independent investigation of the property to determine to your satisfaction the suitability of the property for your needs. Photos herein are the property of their respective owners and use of these images without the express written consent of the owner is prohibited.

CBRE and the CBRE logo are service marks of CBRE, Inc. and/or its affiliated or related companies in the United States and other countries. All other marks displayed on this document are the property of their respective owners.



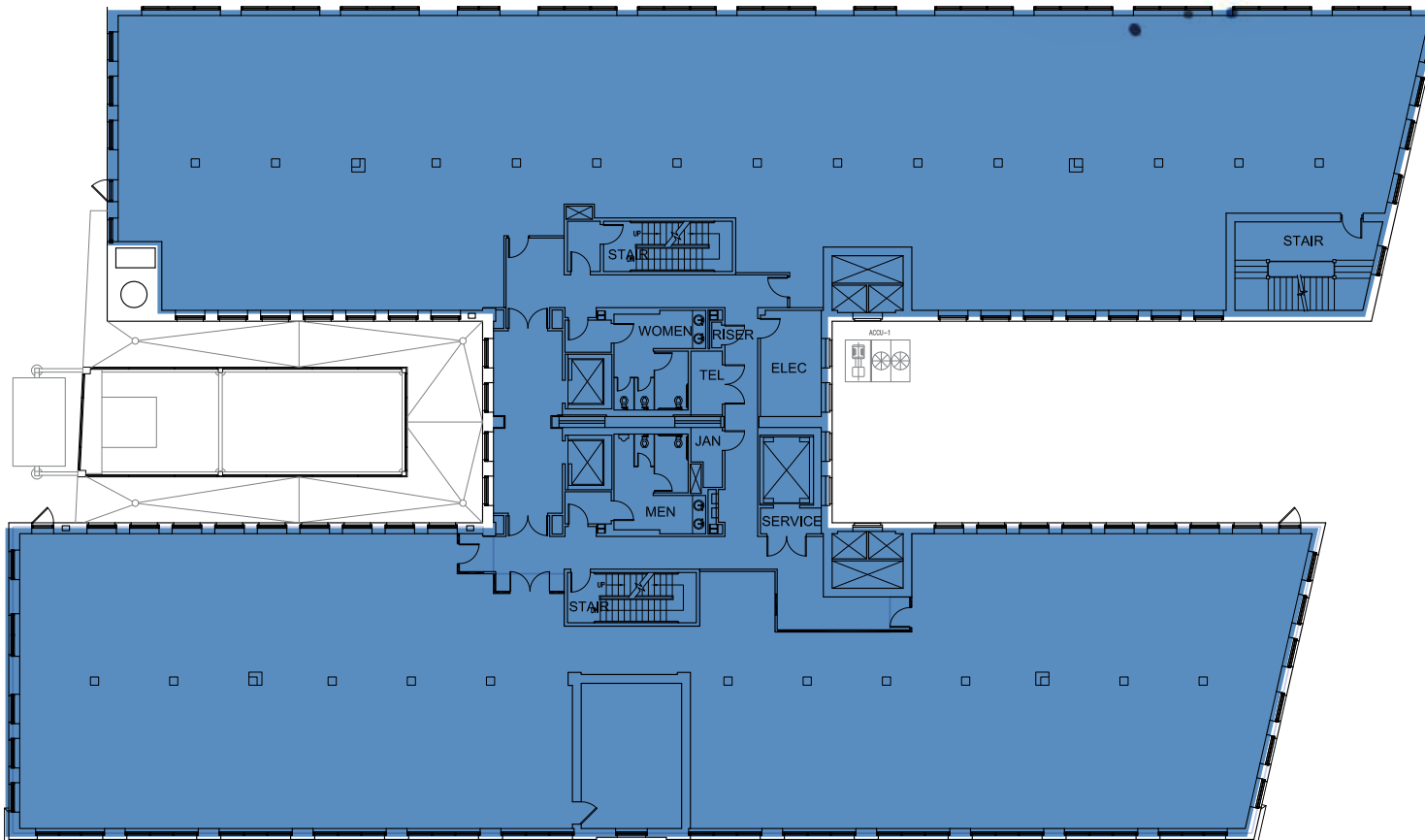
CB Richard Ellis - N.E. Partners, LP, a CBRE Joint Venture



300 A STREET

PART OF THE BRICKS AT FORT POINT

2ND FLOOR 9,649-19,812 SF



LEASING CONTACT INFORMATION

JON FRENI

+1 617 912 7044

jon.freni@cbre-ne.com

PETER DOMINSKI

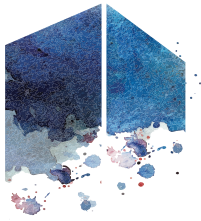
+1 617 912 7048

peter.dominski@cbre-ne.com

SUZANNE BROWN

+1 617 912 6931

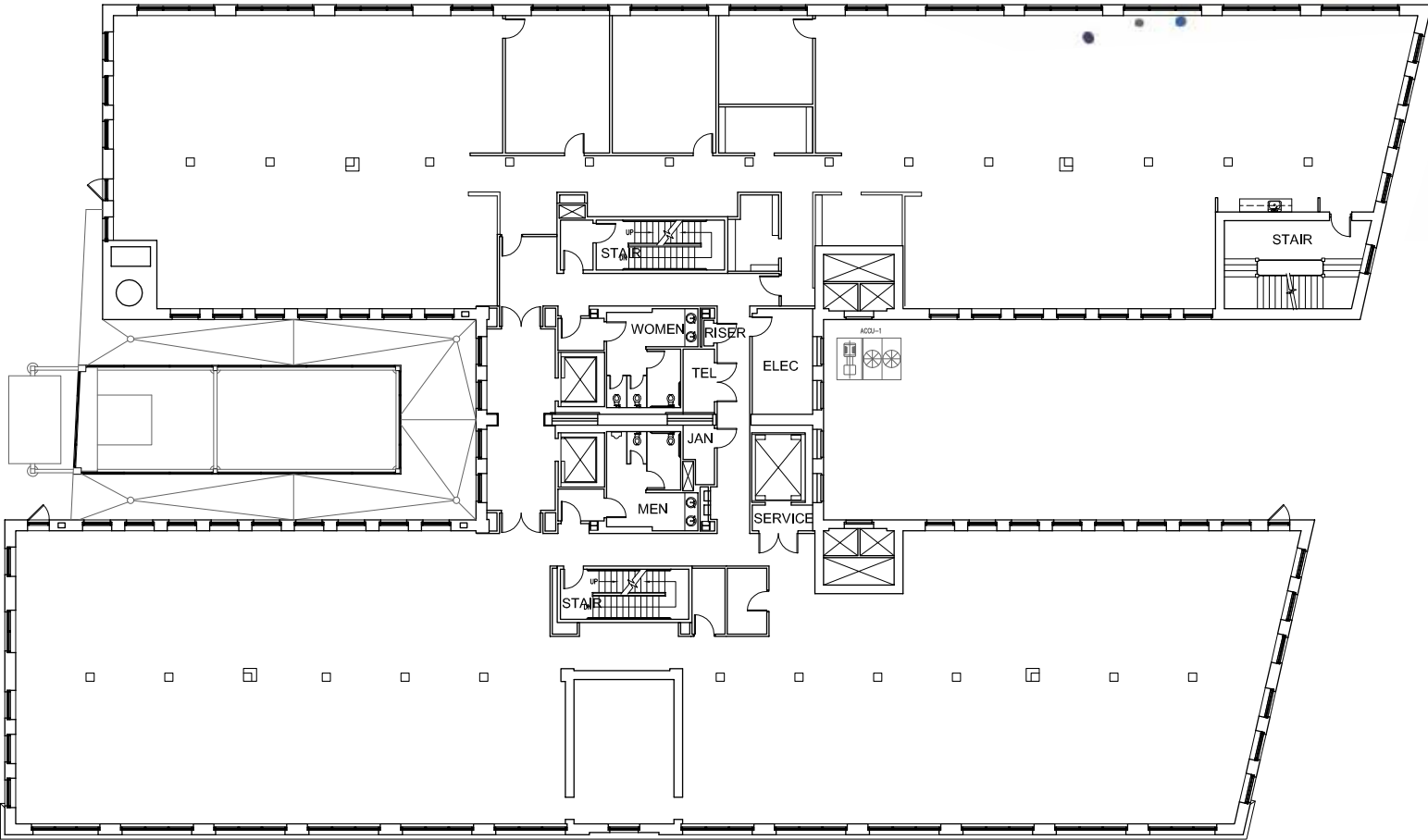
suzanne.brown@cbre-ne.com



2ND FLOOR 9,649-19,812 SF

300 A STREET

PART OF THE BRICKS AT FORT POINT



LEASING CONTACT INFORMATION

JON FRENI

+1 617 912 7044
jon.freni@cbre-ne.com

PETER DOMINSKI

+1 617 912 7048
peter.dominski@cbre-ne.com

SUZANNE BROWN

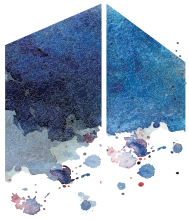
+1 617 912 6931
suzanne.brown@cbre-ne.com

© 2017 CB Richard Ellis - N.E. Partners, LP. This information has been obtained from sources believed reliable. We have not verified it and make no guarantee, warranty or representation about it. Any projections, opinions, assumptions or estimates used are for example only and do not represent the current or future performance of the property. You and your advisors should conduct a careful, independent investigation of the property to determine to your satisfaction the suitability of the property for your needs. Photos herein are the property of their respective owners and use of these images without the express written consent of the owner is prohibited.

CBRE and the CBRE logo are service marks of CBRE, Inc. and/or its affiliated or related companies in the United States and other countries. All other marks displayed on this document are the property of their respective owners.



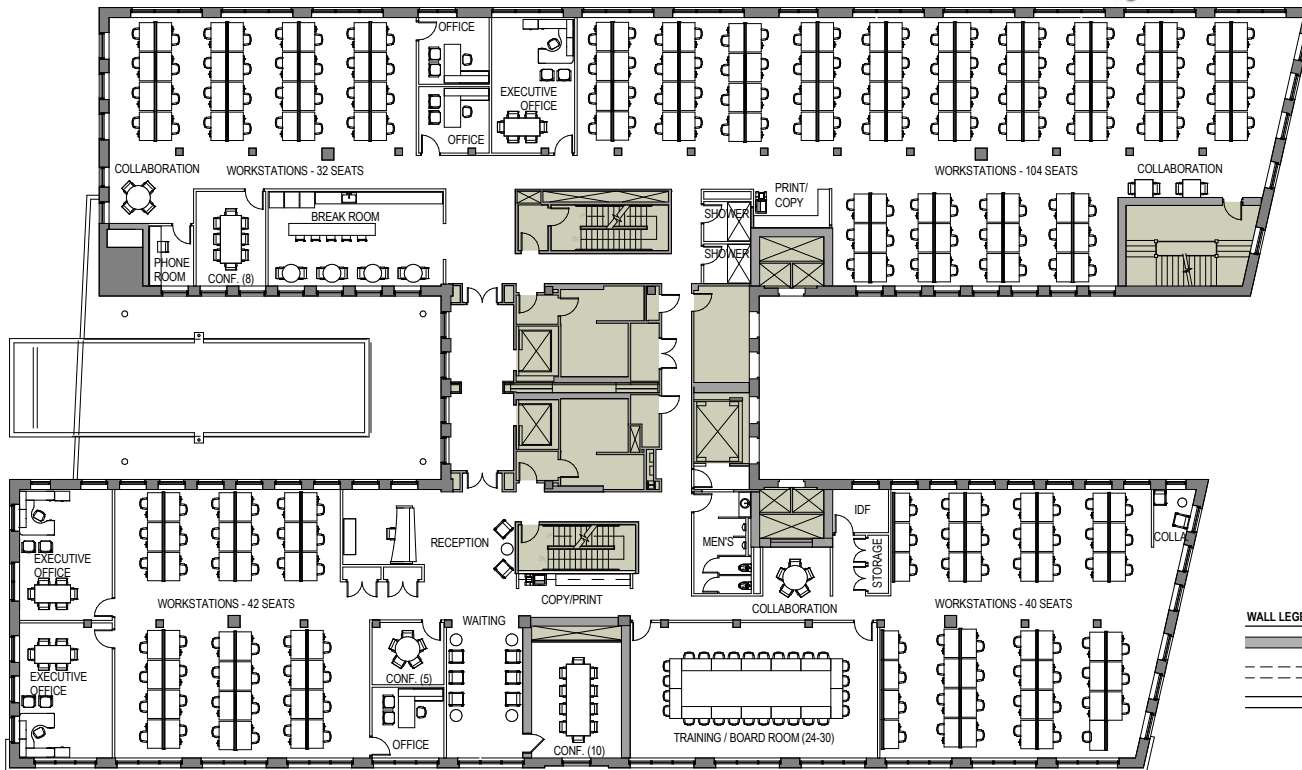
CB Richard Ellis - N.E. Partners, LP, a CBRE Joint Venture



300 A STREET

PART OF THE BRICKS AT FORT POINT

FIT PLAN



KEY

- 226 workstations
- 6 offices
- 4 conference rooms
- 4 collaboration areas

LEASING CONTACT INFORMATION

JON FRENI
 +1 617 912 7048
 jon.freni@cbre-ne.com

PETER DOMINSKI
 +1 617 912 7048
 peter.dominski@cbre-ne.com

SUZANNE BROWN
 +1 617 912 6931
 suzanne.brown@cbre-ne.com

© 2017 CB Richard Ellis - N.E. Partners, LP. This information has been obtained from sources believed reliable. We have not verified it and make no guarantee, warranty or representation about it. Any projections, opinions, assumptions or estimates used are for example only and do not represent the current or future performance of the property. You and your advisors should conduct a careful, independent investigation of the property to determine to your satisfaction the suitability of the property for your needs. Photos herein are the property of their respective owners and use of these images without the express written consent of the owner is prohibited.

CBRE and the CBRE logo are service marks of CBRE, Inc. and/or its affiliated or related companies in the United States and other countries. All other marks displayed on this document are the property of their respective owners.



CB Richard Ellis - N.E. Partners, LP, a CBRE Joint Venture