

PROPERTY DESCRIPTION REPORT

888 KINDERKAMACK ROAD
RIVER EDGE, NJ

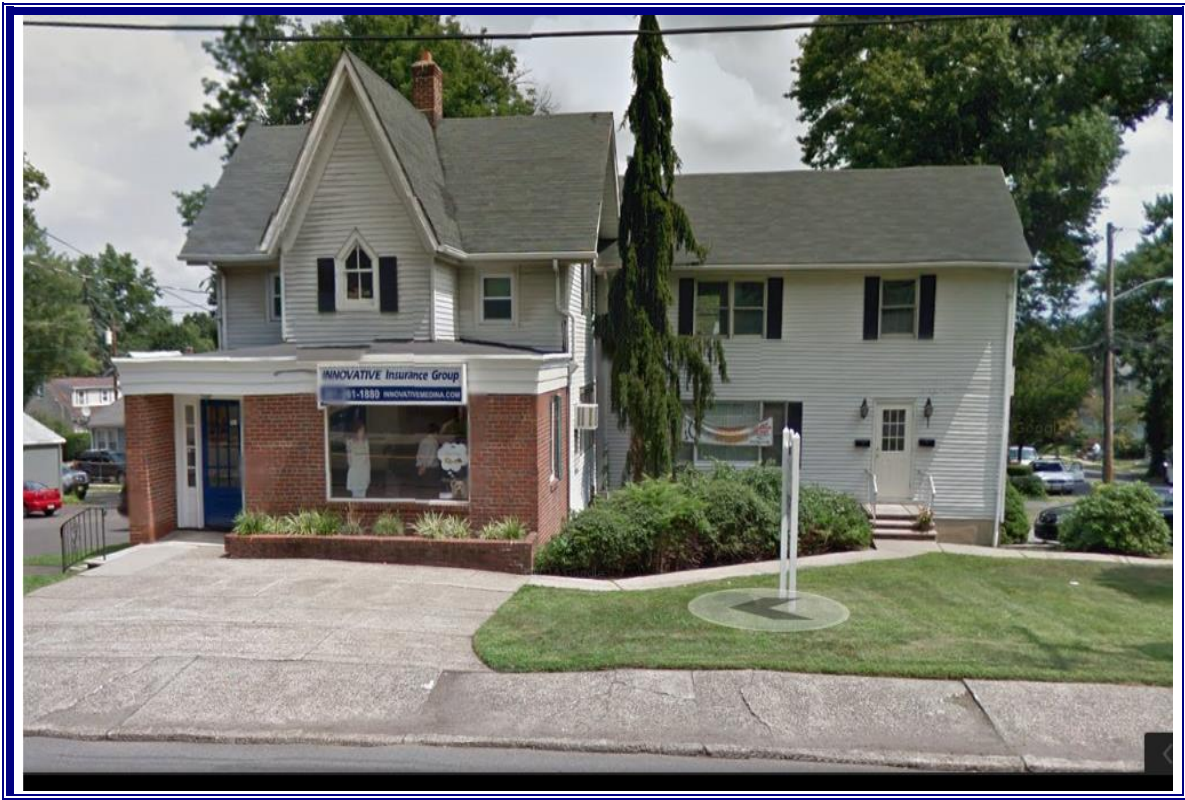
PHYSICAL DESCRIPTION

SF Available: 900
Office Space: 900
Floor: 2nd
Ceiling Height: 8.0
Heat: GAS
Parking Spaces:
Zoning: OFF

FINANCIAL INFORMATION

Lease Price: \$1,175.00/month
+ Electricity
* Includes Heat

Just Reduced!!!!



ATTRACTIVE, WELL-MAINTAINED BUILDING WITH SIGNAGE ON LAWN AND ON BUILDING. THREE SIGNS TOTAL. LARGE PARKING LOT! JOIN THE YOGA STUDIO AND THE INSURANCE AGENCY! An awesome opportunity!

NIA National Realty, Inc.

Call: Nina Bianco

Office: (201) 336-1211

Fax: (201) 845-3012

Email: nbianco@nianationalrealty.com

Please visit our web site at www.nianationalrealty.com

Subject to errors, omissions, changes, prior sale or withdrawal, all without notice.

NIA