

# STOW ROAD CORPORATE PARK



**NEWLY  
RENOVATED**

**FOR LEASE - 8, 9, 10, 12, 14 Stow Road, Marlton, New Jersey**  
**NEW SIGNAGE WITH ROAD EXPOSURE AVAILABLE FOR EVERY TENANT**

## Property Description

Stow Road Corporate Park is a single story complex located minutes from Routes 73, 70, I-295 and the NJ Turnpike. Institutional-quality construction provides a professional setting for all office and flex users. The buildings boast efficient layouts, direct access entrances and tenant control of utilities, as well as Comcast & Verizon to site for tele/data services. A full service fitness center is also on site.

**Under new ownership representation, recent improvements include:**  
**Parking lots, roofs, landscaping, power washing and new monument signage**

## Rental \$11/SF, NNN

2019 Estimated Operating Expenses: \$3.02/SF

2019 Estimated Real Estate Taxes: \$1.79/SF



**8 STOW  
ROAD**

Suite 110 4,158 SF



**9 STOW  
ROAD**

Suite A 15,400 SF  
 Suite C 5,233 SF\*  
 Suite D 25,325 SF\*  
 (\*contiguous)



**10 STOW  
ROAD**

Suite 50 3,093 SF  
 Suite 100 11,267 SF



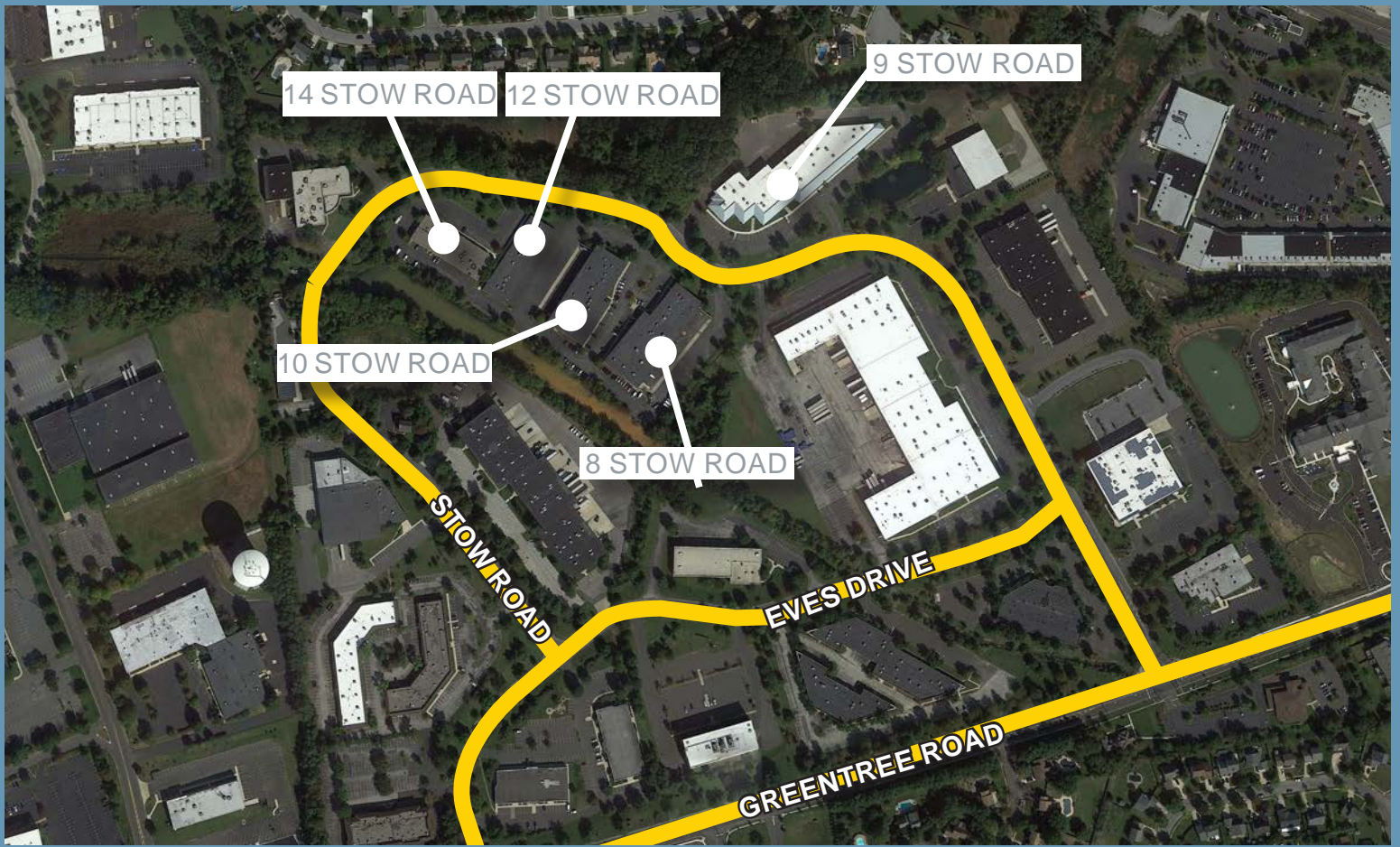
**12 STOW  
ROAD**

Suite 130 17,602 SF  
 (subdividable)



**14 STOW  
ROAD**

Suite 100 9,713 SF  
 (subdividable)



**For further information, please contact our exclusive agents:**

Anne Klein	Executive Managing Director	856.334.2110	aklein@ngkf.com
Keith McClure	Associate Director	856.334.2122	kmccclure@ngkf.com

40 Lake Center Executive Park | 401 Route 73 North | Suite 120 | Marlton, NJ 08053  
 856.334.2100 | 856.334.2129 (fax)



[www.ngkf.com](http://www.ngkf.com)

[WWW.STOWROAD.COM](http://WWW.STOWROAD.COM)

The information contained herein has been obtained from sources deemed reliable but has not been verified and no guarantee, warranty or representation, either express or implied, is made with respect to such information. Terms of sale or lease and availability are subject to change or withdrawal without notice.