

**4207
MURRAY AVENUE
PITTSBURGH, PA 15217**

**OFFICE SPACE
FOR LEASE**



PROPERTY SUMMARY

4207 Murray Avenue Pittsburgh, PA 15217

Space Size: 1,200 SF +/-

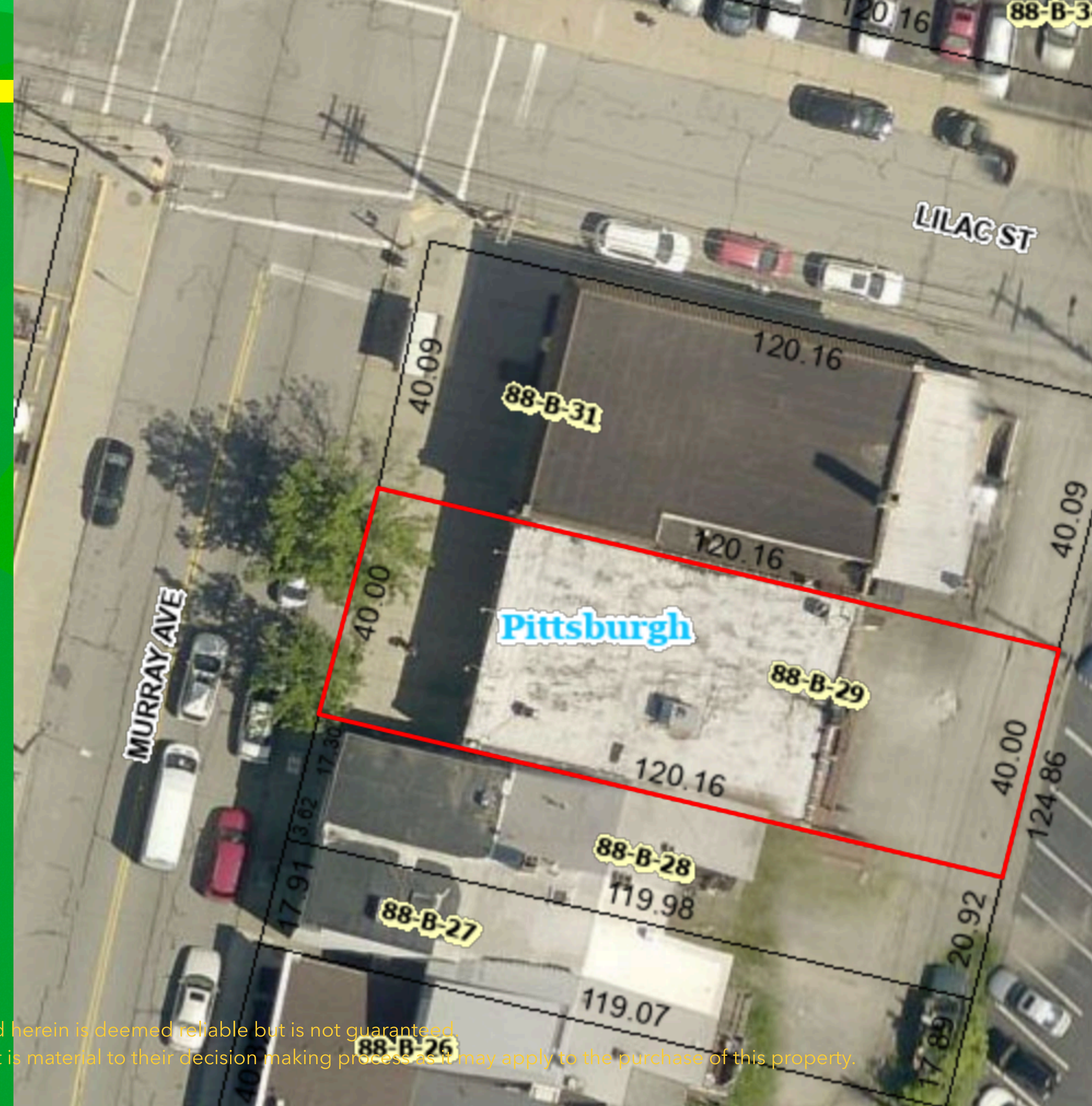
Rent: \$1,200/month + gas & electric

Parking: One off-street parking space

Plentiful street parking available around building

Zoning: LNC Local Neighborhood Commercial

For Lease: Move-in ready 1,200 SF +/- office space with three offices, conference room, reception area, kitchenette and restroom. Office can come furnished with current furniture or presented empty. Space is reachable from both Murray Avenue and rear alley.



The information contained herein is deemed reliable but is not guaranteed.

The Buyer is exclusively responsible for verification of any matter that is material to their decision making process as it may apply to the purchase of this property.







Rear Entrance

An aerial photograph of a residential neighborhood. A yellow arrow points from the word 'PROPERTY' to a specific building on Murray Ave. The building is a two-story structure with a flat roof, situated between Murray Ave and Greenfield Ave. The surrounding area includes other houses, a large parking lot, and several streets labeled: Beechwood Blvd, Murray Ave, Greenfield Ave, Windsor St, and Loretta St. There are also blue 'D' icons scattered throughout the image.

PROPERTY

Located along the Greenfield
(Murray Avenue Business District).
Building sits directly across from
the Greenfield Giant Eagle.

Minutes to the Parkway East I-376,
The Waterfront and Sq. Hill.



Real Estate Services

To schedule a tour, please contact

Michael Levenson

Agent | Commercial Real Estate



c: 412.327.2661 / o: 412.276.5000



CommercialRealEstatePGH@gmail.com



1597 Washington Pike, Suite B-1
Bridgeville, PA 15017

The information contained herein is deemed reliable but is not guaranteed.

The Buyer is exclusively responsible for verification of any matter that is material to their decision making process as it may apply to the purchase of this property.