



FOR LEASE

christina chong - 206.551.5909 // office 425-643-8557

for lease

2322 196th st sw
lynnwood, wa 98036

Kaleb Real Estate Group is proud to present 5482 SF of Medical/Office/Professional space for sublease in the Ryann Building in Lynnwood, WA. The property features abundant parking for employees and guests at approximately 5 parking stalls per 1,000 SF. Enjoy the excellent location with immediate and easy access to I-5, I-405, and nearby Alderwood Shopping Mall. Strategically located right off the I-5 for easy access and visibility provide for high traffic counts. Great demographics of residential and local businesses surround this location.

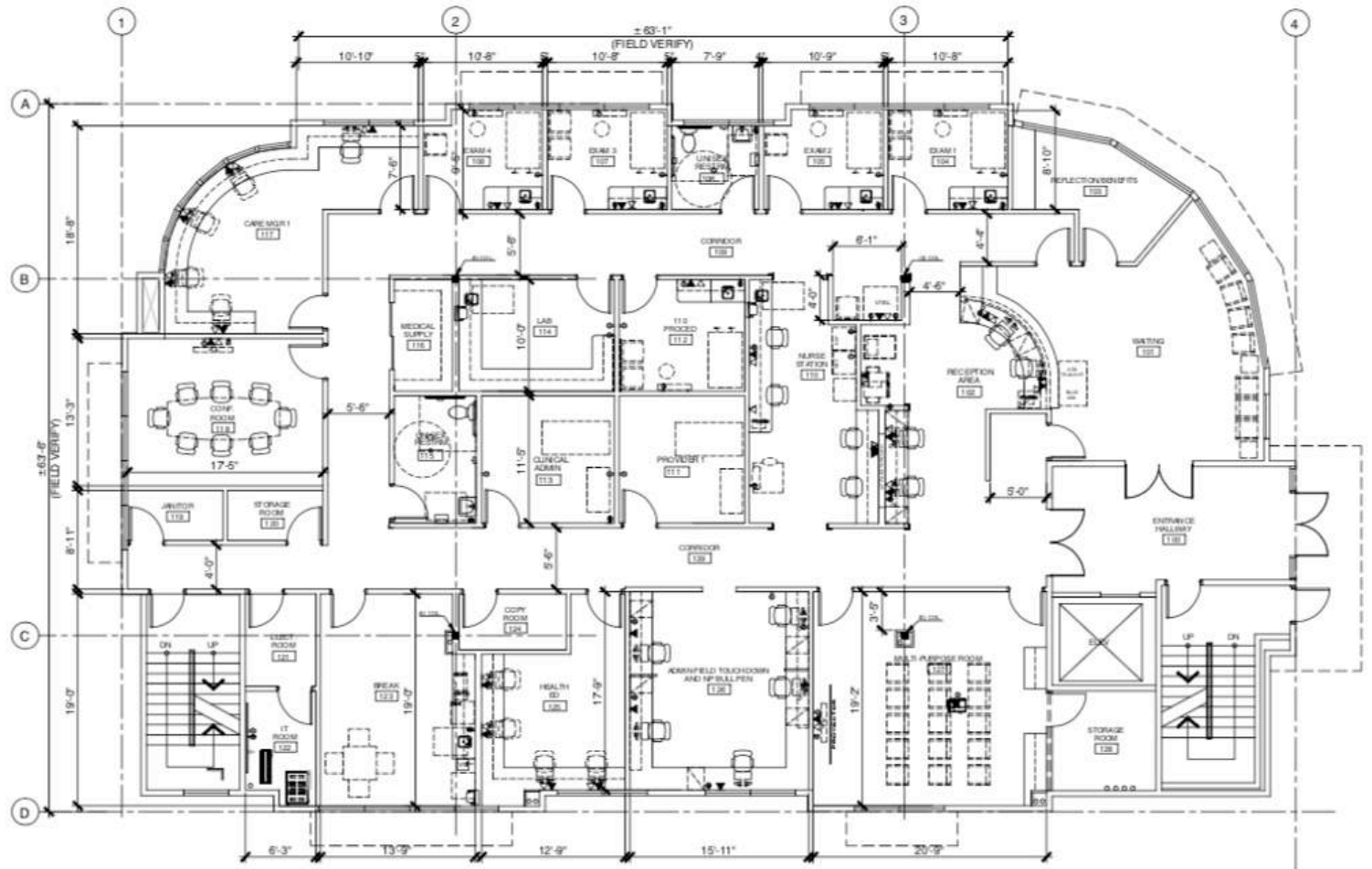


LEASING DETAILS

GROSS LEASE
\$30.60 / PSF

RENTABLE SF
5482 SF

TYPE
Medical
Office
Professional





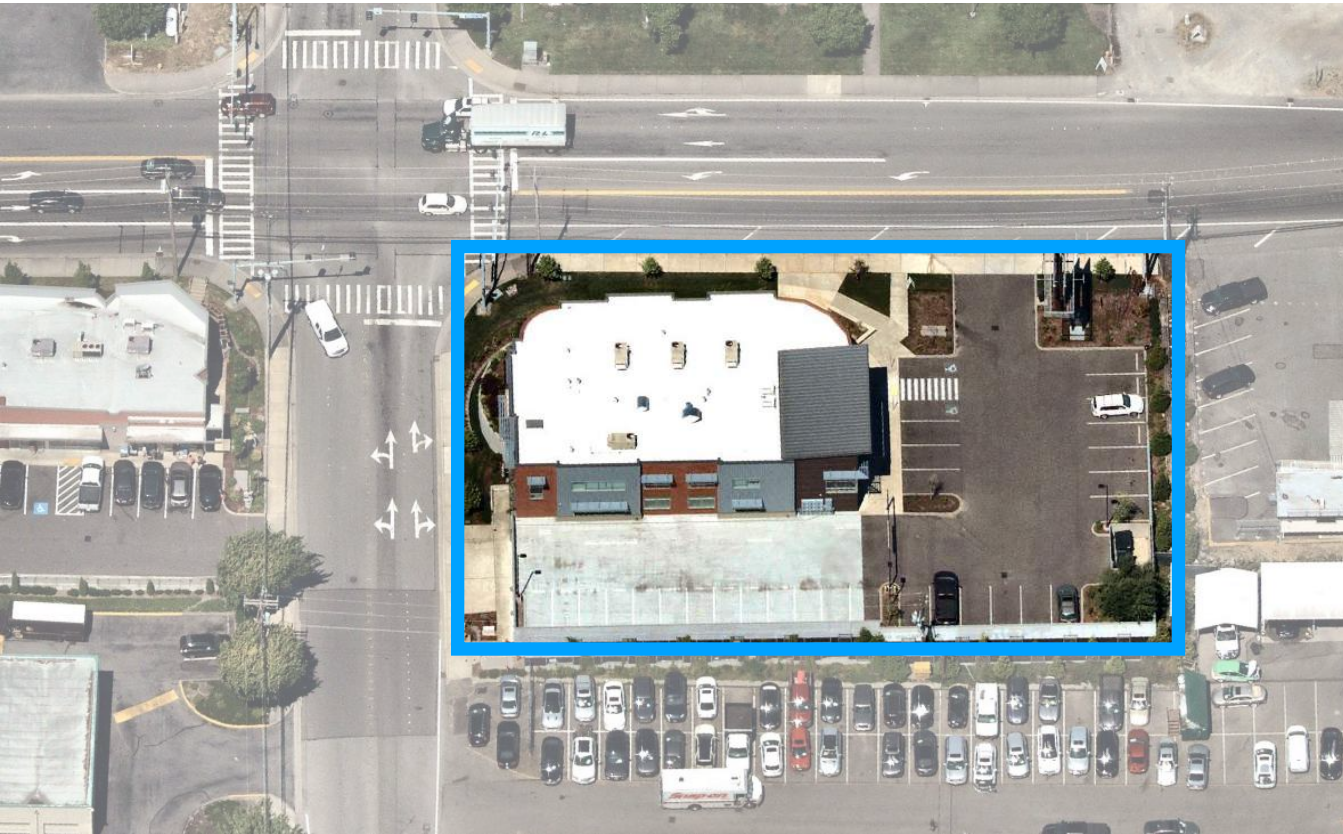
12,000 SF Building
24,443 SF Lot
Year Built 2015

Approximately 5 parking stalls per 1000 SF

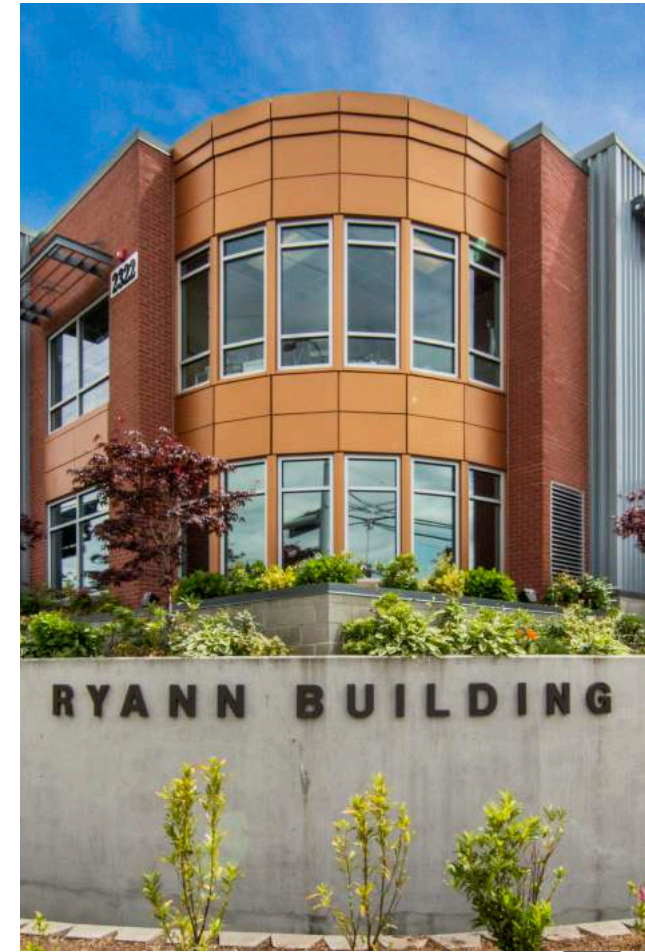


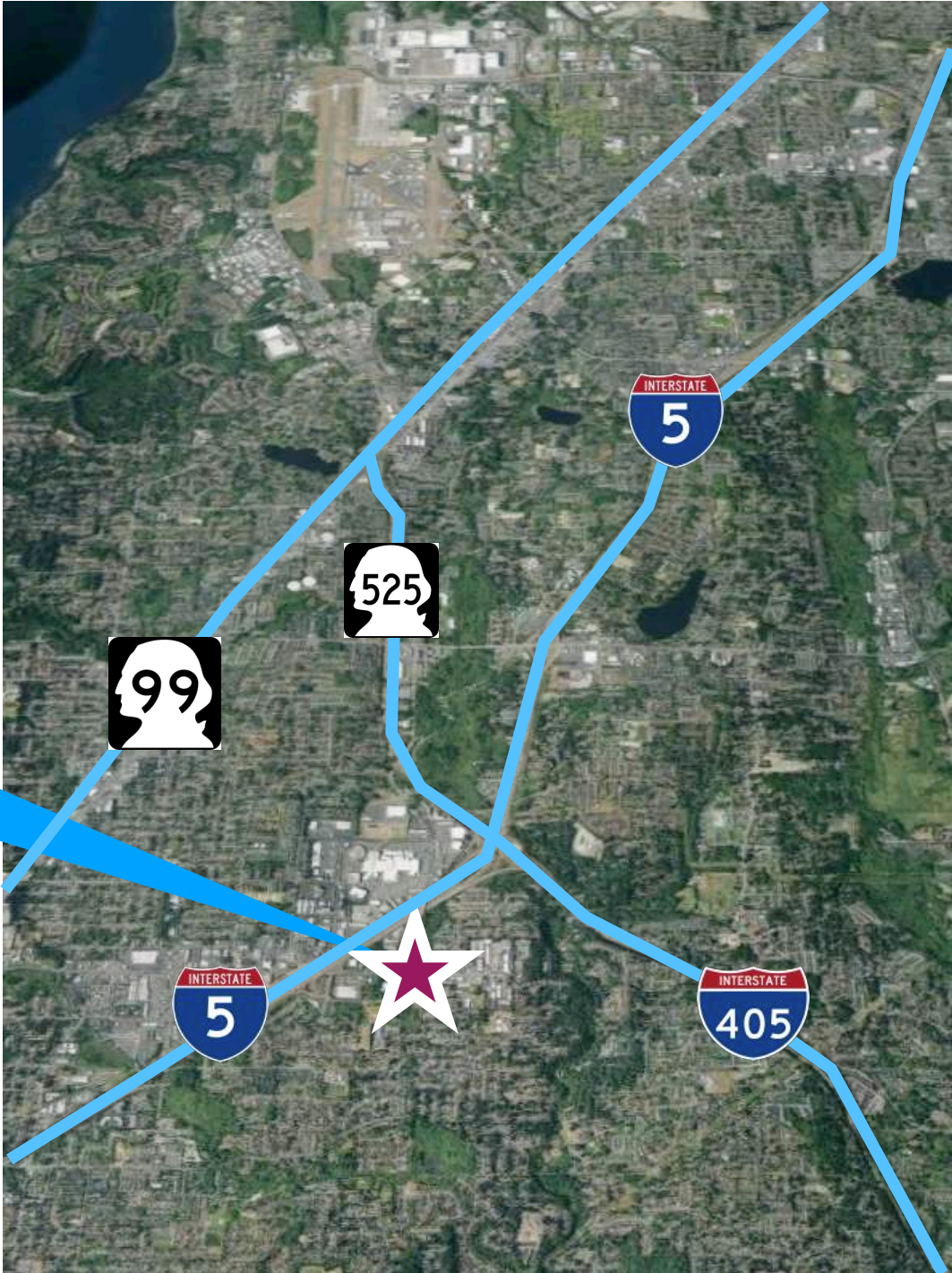
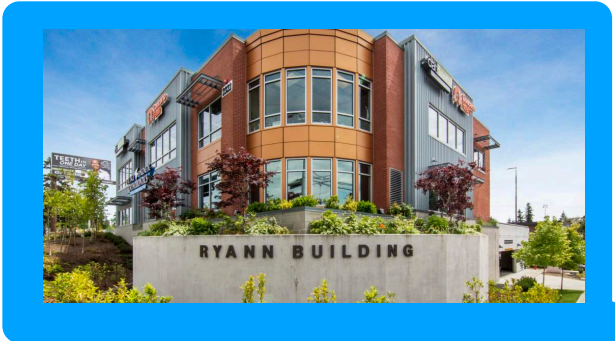
Fully Built-Out Medical Space
4 Exam Rooms
Laboratory and Procedure Room
Multi-Purpose Training Room
Admin Touchdown/Care Manager/Nurse Stations
Conference Room, Kitchen/Break Room, 2 Restrooms
Private Offices
Large Lobby and Reception Areas

BUILDING / PROPERTY / SPACE INFO



excellent corner location





WWW.KALEBGROUP.COM

Christina Chong
206.551.5909
cchong@kalebgroup.com

Kaleb Group
425.643.8557
info@kalebgroup.com

For more detailed information, please
Contact one of our helpful Listing Brokers.

KALEB REAL ESTATE GROUP

