

FOR LEASE



For Lease
2321 Grandview Ave
NASHVILLE, TN

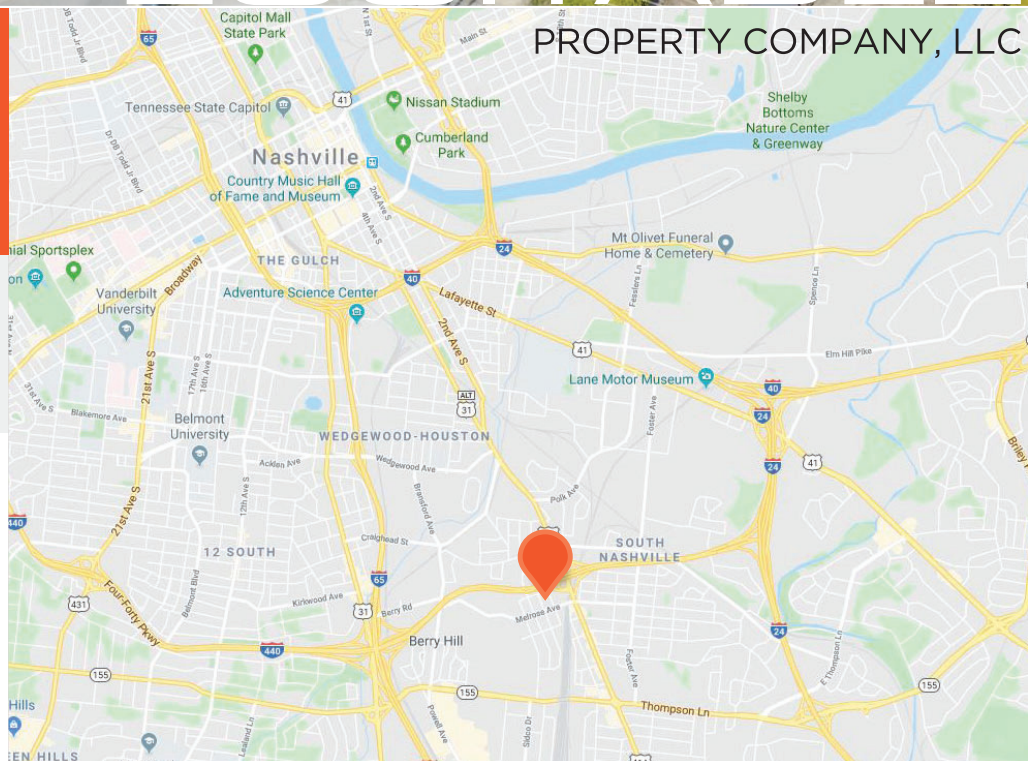
± 7,200 SF

PETE GREENFIELD
pete@equitabletn.com
615.418.8677

JON SPEERS
jon@equitabletn.com
615.480.3126

- + For Lease :: \$10,500/Month NNN
- + Great for contractors, automotive, supply house, or adaptive uses
- + ±0.70 Acre lot
- + 4 Grade level doors
 - Three 10' x 14'
 - One 10' x 10'
- + Large, fully fenced yard
- + Zoned IWD

PROPERTY COMPANY, LLC



The information provided herein was obtained from sources we believe reliable. Equitable Property Company or Seller/Lessor makes no guarantees, warranties, or representations as to the accuracy thereof. The marketing of this property is submitted subject to omissions, change of sale/lease price or conditions, prior sale or lease, errors, and withdrawal without any type of notice.

For Lease

2321 Grandview Ave

NASHVILLE, TN

± 7,200 SF



+ 22' Clear in warehouse + Fully insulated + High-efficiency lighting + 60' Warehouse depth



For Lease

2321 Grandview Ave

NASHVILLE, TN

± 7,200 SF



+ Premium office finishes



+ Electronic gate with Pad sensor egress

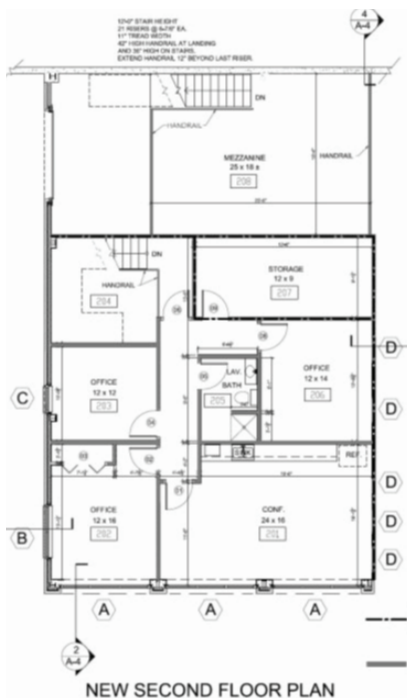
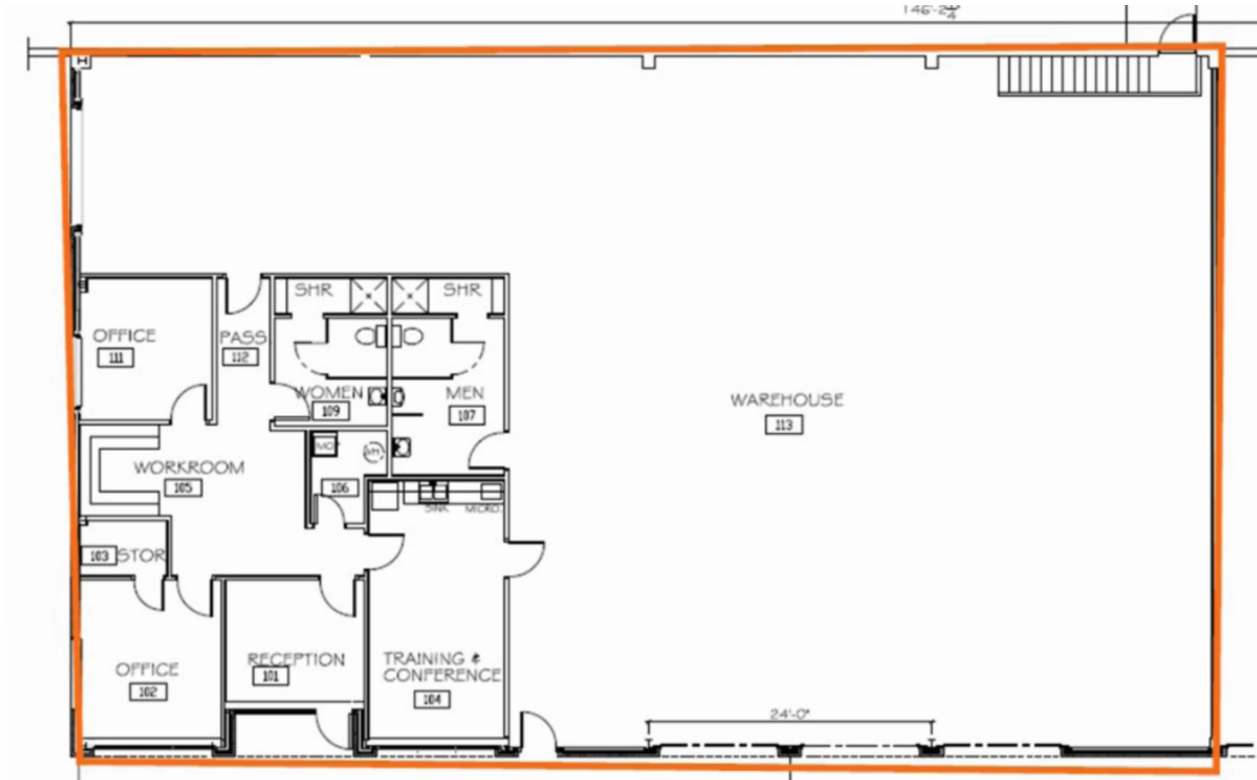


For Lease

2321 Grandview Ave

NASHVILLE, TN

± 7,200 SF



2321 Grandview Avenue is a unique opportunity to lease a premium 7,200 square foot warehouse with surplus, fenced yard storage in Nashville. Positioned in a central Nashville location just off of 440 and Nolensville Road, this property is convenient to nearly every neighborhood in the city. With near immediate interstate access, tenants will be prepared to react and serve their customers in all corners of the market.