



8321 S. SANGRE DE CRISTO ROAD Littleton, Colorado 80127

PROPERTY FEATURES

- Great Location Near C-470 and S. Kipling
- Retail/Restaurants Close-By
- Atrium Lobby Full of Natural Light
- Locally owned and managed



BUILDING SPECIFICATIONS

| | | |
|---------------------------|-----------|-------------------|
| Available: | Suite 102 | 2,735 RSF |
| Lease Rate: | | \$19.50/RSF Gross |
| Year Built: | | 2006 |
| Elevator: | | One |
| Total Building SF: | | 17,434 RSF |

FOR MORE INFORMATION CONTACT:

WILLIAM NETWAL

wnetwal@gcgcre.com | 720.476.5228

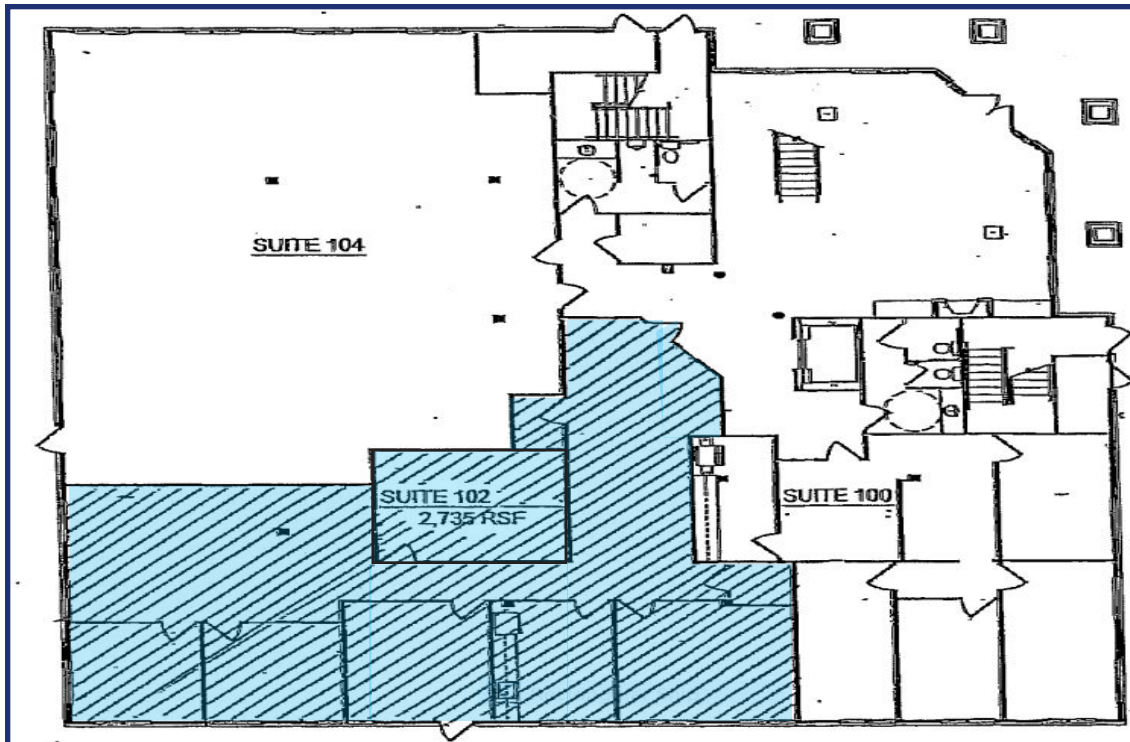
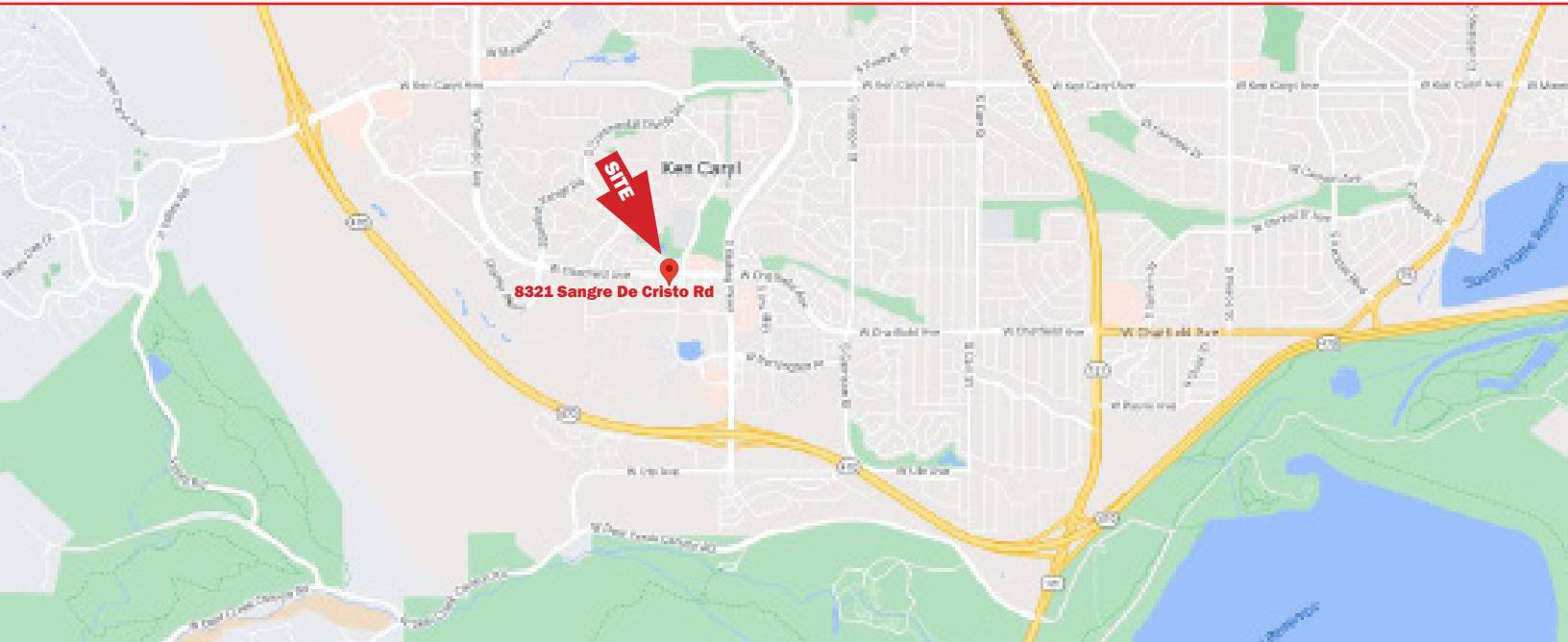
JAMIE MACBETH

jmacbeth@gcgcre.com | 720.476.5229



GENESEE
COMMERCIAL
GROUP, LLC

8321 S. SANGRE DE CRISTO ROAD
Littleton, Colorado 80127



SUITE 102
2,735 RSF

FOR MORE INFORMATION CONTACT:

WILLIAM NETWAL

wnetwal@gcgcre.com | 720.476.5228

JAMIE MACBETH

jmacbeth@gcgcre.com | 720.476.5229

GENESEE COMMERCIAL GROUP, LLC | 710 KIPLING STREET, SUITE 403 | LAKEWOOD, COLORADO 80215 | WWW.GCGCRE.COM

No warranty or representation is made as to the accuracy of the foregoing information. Terms of sale or lease and availability are subject to change or withdrawal without notice.