

**FOR LEASE**

# Doylestown Borough Office Building

**PENN'S GRANT REALTY**  
Corporation

**2 East Court Street  
Doylestown Borough, Bucks County, PA**

COMMERCIAL • INDUSTRIAL • INVESTMENT



**PRESENTED BY:** Kurt Eisenschmid, CCIM — Penn's Grant Realty Corporation  
2005 S Easton Rd, STE 306, Doylestown, PA • 215-489-3800 x3 • Kurt@pgr Realty.com • www.pgr Realty.com

**PROPERTY SPECIFICATIONS**

Building Total Size: ..... 4,110 ± SF - on three floors

First Floor - 1,842 ± SF

Second Floor - 1,512 ± SF

Third Floor - 756 ± SF

Location: ..... Downtown Doylestown Borough

Parking: ..... 6+ on-site

HVAC: ..... Oil hot water with central air

Water: ..... Public

Sewer: ..... Public

Utilities/Gas: ..... PECO

Municipality: ..... Doylestown Borough

Zoning: ..... CC - Central Commercial

Tax Parcel: ..... 08-008-292

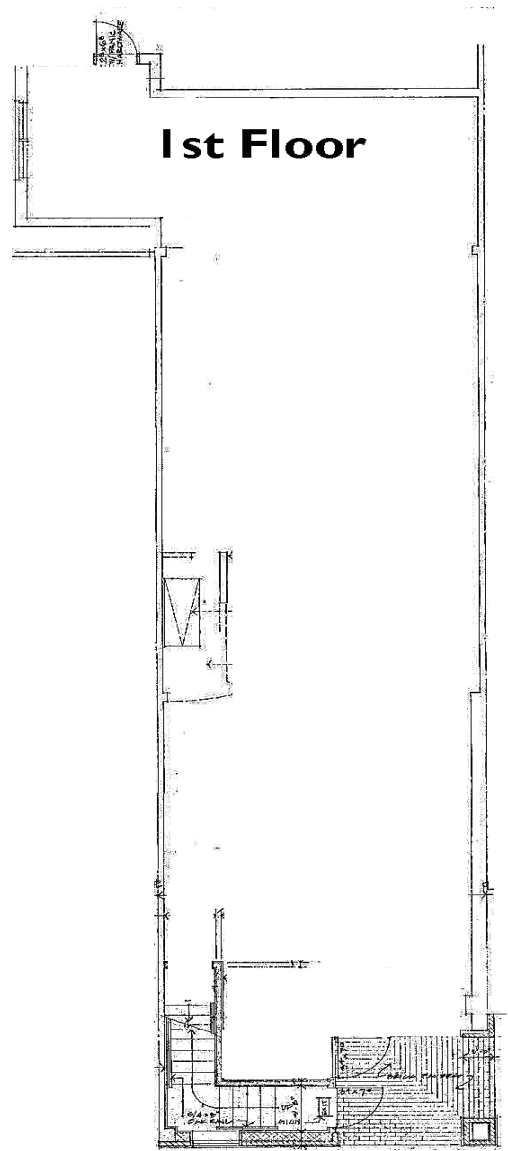
Lease Price: ..... \$22.50 PSF plus utilities & janitorial



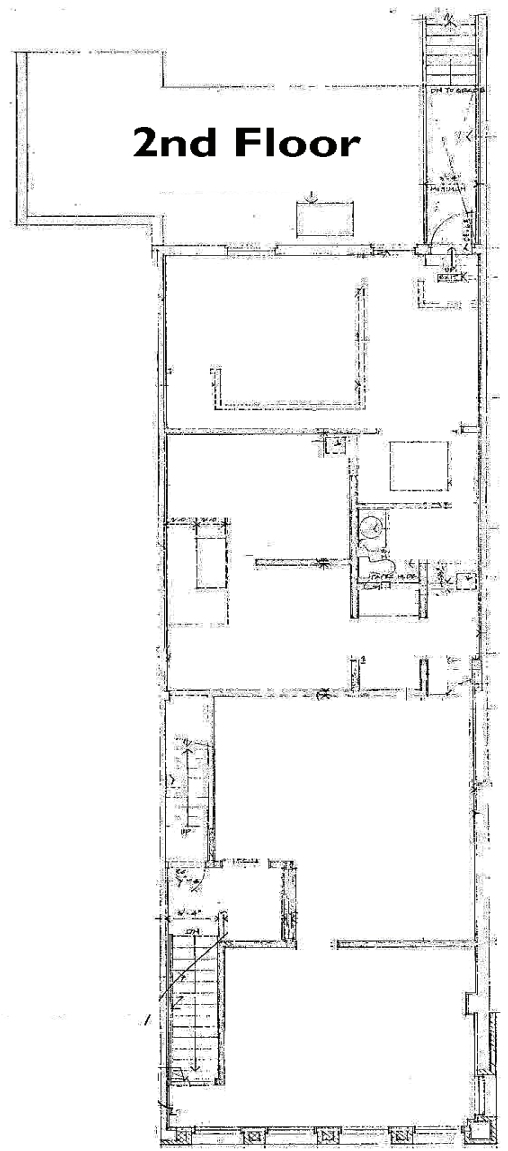
View From 2 E. Court Street

**PROPERTY HIGHLIGHTS**

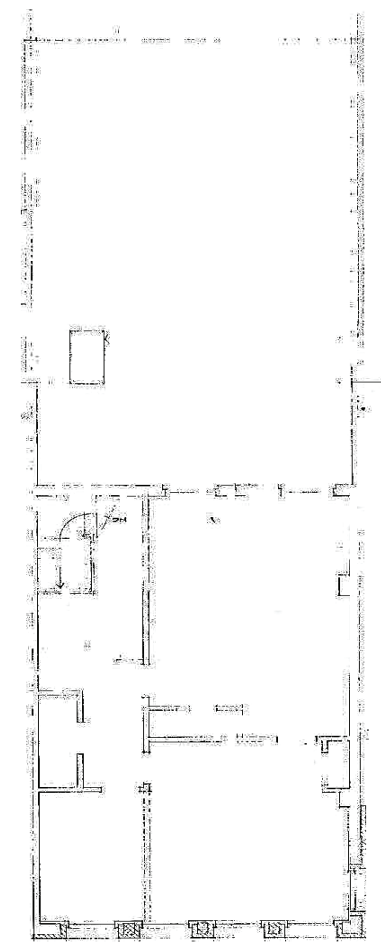
- **In The Heart of Doylestown Borough**
- **High Visibility Location with Pedestrian Traffic**
- **Located At Signalized Intersection  
 Corner of Main Street & E. Court Street**
- **Walking Distance to Bucks County Court House,  
 Shopping, Restaurants, and Museums**



**1st Floor**



**2nd Floor**



**3rd Floor**

Front Entrance  
2 E. Court St.



