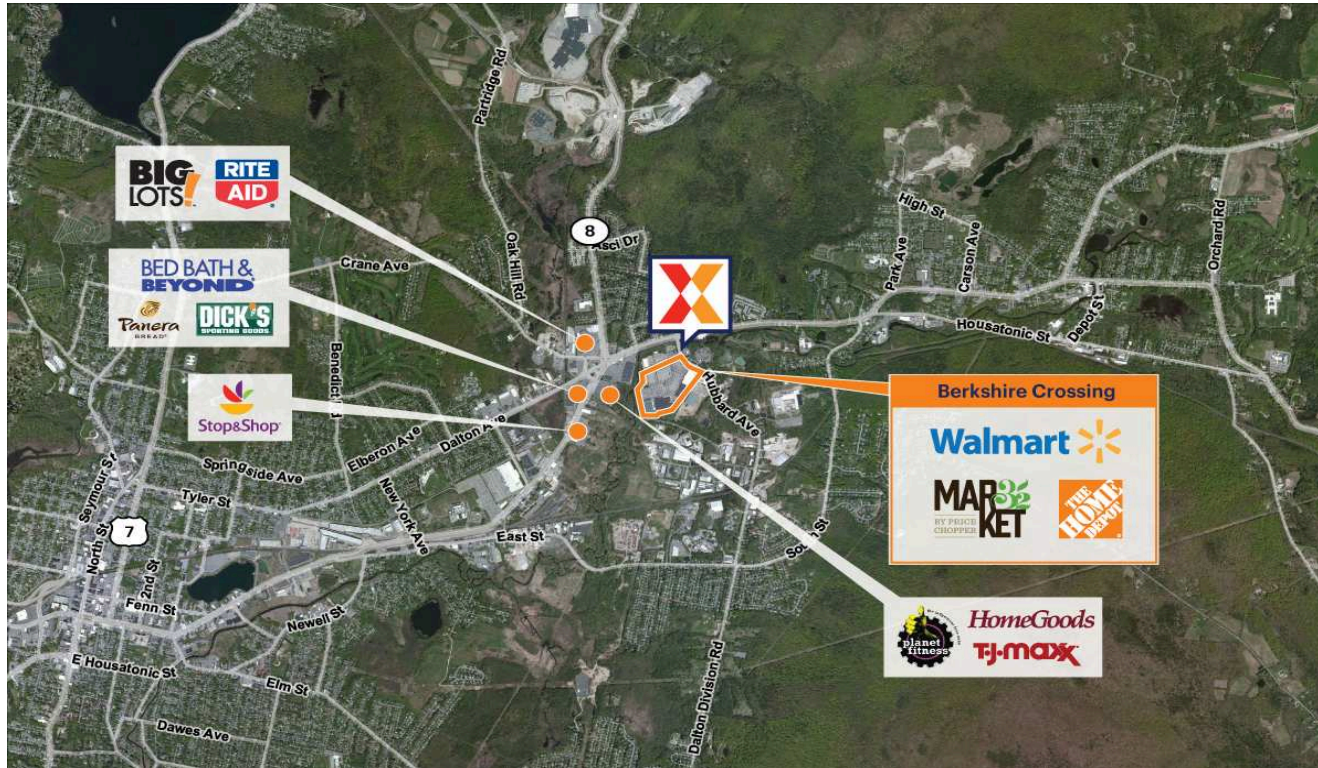


# Berkshire Crossing

Pittsfield, MA

42.4659, -73.197

555 Hubbard Ave | Pittsfield, MA 01201-3876



Center Size: 436,854 SF



Demographics	1 Mile	3 Mile	5 Mile
	2,487	30,609	51,254
	1,060	13,300	22,287
	\$77,179	\$65,972	\$68,154

Market-dominant center with Market 32 by Price Chopper, drawing an estimated 11,500+ daily visits and 4.2M+ visits/year

Strong lineup of national retailers including Walmart, The Home Depot, Barnes & Noble Booksellers, Pier 1 Imports, Michaels, Ulta Beauty, Five Below, Starbucks and Kay Jewelers

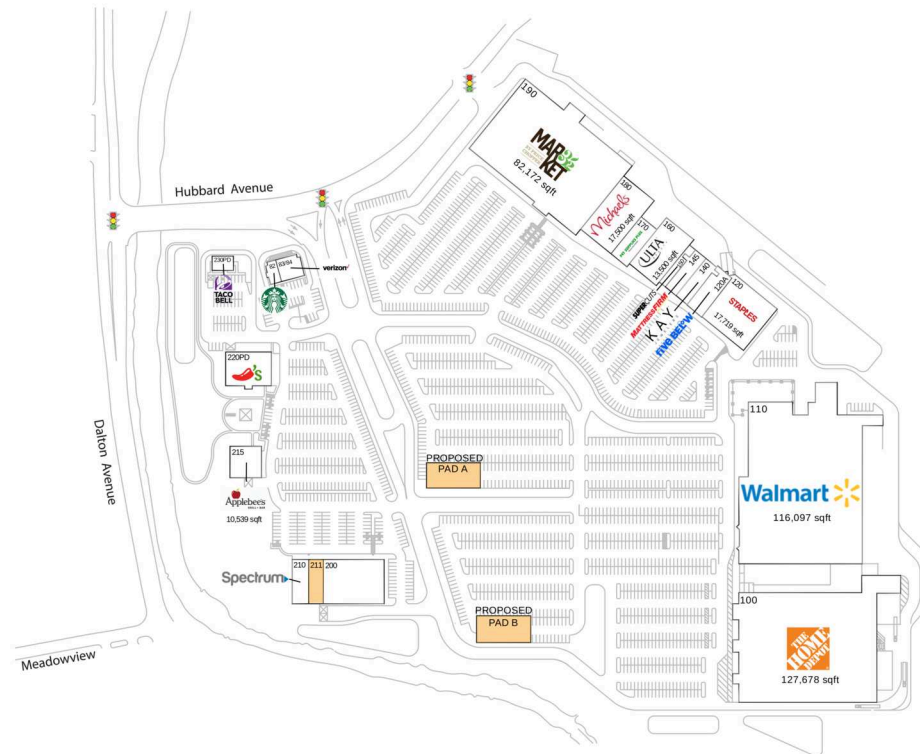
Benefits from high seasonal tourism to The Berkshires drawing 2.6MM tourists/year

# Berkshire Crossing

Pittsfield, MA

42.4659, -73.197

555 Hubbard Ave | Pittsfield, MA 01201-3876



## Available Space

211 5,050 SF

## Pad Opportunities

PAD A 0 SF/0  
 PAD B 0 SF/0

## Current Retailers

82	Starbucks	1,592 SF
83/84	Verizon Wireless	3,283 SF
100	The Home Depot	127,678 SF
110	Walmart	116,097 SF
120	Staples	17,719 SF
120A	Five Below	7,240 SF
140	Kay Jewelers	3,867 SF
145	Mattress Firm	5,089 SF
150	Supercuts	1,733 SF
160	Ulta Beauty	13,500 SF
170	Pet Supplies Plus	6,266 SF
180	Michaels	17,500 SF
190	Market 32	82,172 SF
200	Barnes & Noble	17,464 SF
210	Spectrum	4,000 SF
215	Applebee's	10,539 SF
220PD	Chili's Grill & Bar	4,500 SF
230PD	Taco Bell	1,989 SF



4206