

FOR LEASE

ZOMMICK McMAHON

Commercial Real Estate Inc.
610.359.1100

**25 W. Third Street | Media | 19063
Delaware County | Pennsylvania**

Asking Lease Price: \$18.00/SF plus utilities

Second Floor Suite Available: 1,000 SF



- Available at the end of January 2016.
- Private Entrance
- Large Open Reception Area
- 3 Large Private Offices
- Restroom
- Kitchenette
- Wired for Phone/Data



ZOMMICK McMAHON
Commercial Real Estate Inc.

1306 Wilmington Pike
Suite A-2
West Chester, PA 19382
610.359.1100

Daniel W. Heuser
610.764.9396 (m)
dheuser@ZMCRE.com

Jeff Dowd
610.842.4383 (m)
jdowd@ZMCRE.com

FOR LEASE

ZOMMICK McMAHON

Commercial Real Estate Inc.

610.359.1100

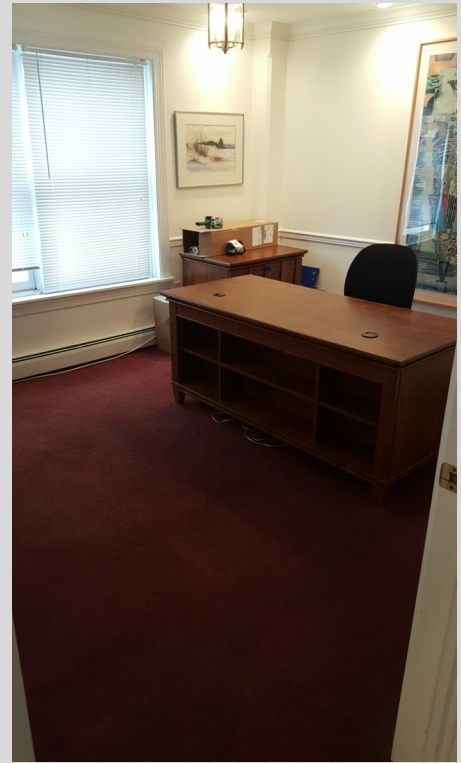
**25 W. Third Street | Media | 19063
Delaware County | Pennsylvania**

Asking Lease Price: \$18.00/SF plus utilities

Second Floor Suite Available: 1,000 SF



- Available, Stacked, Off-street Parking behind property.
- Within walking distance to the Delaware County Courthouse.
- Excellent Proximity to Blue Route (PA-476).



ZOMMICK McMAHON
Commercial Real Estate Inc.

1306 Wilmington Pike
Suite A-2
West Chester, PA 19382
610.359.1100

Daniel W. Heuser
610.764.9396 (m)
dheuser@ZMCRE.com

Jeff Dowd
610.842.4383 (m)
jdowd@ZMCRE.com

FOR LEASE

ZOMMICK McMAHON

Commercial Real Estate Inc.

610.359.1100

**25 W. Third Street | Media | 19063
Delaware County | Pennsylvania**

ABOUT ZOMMICK McMAHON COMMERCIAL REAL ESTATE

Zommick McMahon Commercial Real Estate, Inc. has been a Metro Philadelphia Area staple since its inception in 1949. The Company was founded by Joseph Zommick, and continues today with Ryan McMahon and his highly experienced staff, whom are all results-oriented professionals. Zommick McMahon Commercial Real Estate, Inc. has devoted Real Estate Specialists in the areas of Investment, Office, Retail, Industrial, as well as extensive experience in all areas of Development.

SOME OF OUR SATISFIED CLIENTS

- Bank of America
- Walgreen's Drugs
- Sunoco Oil Company
- Exxon/Mobil Oil Company
- Regency Centers
- Iron Hill Brew Company
- Sun East Federal Credit Union
- Dunkin Donuts
- Royal Farms
- Rite Aid
- CVS
- Wawa
- WSFS Bank
- Primo Hoagies



ZOMMICK McMAHON
Commercial Real Estate Inc.

1306 Wilmington Pike
Suite A-2
West Chester, PA 19382
610.359.1100

Daniel W. Heuser
610.764.9396 (m)
dheuser@ZMCRE.com

Jeff Dowd
610.842.4383 (m)
jdowd@ZMCRE.com