

Albers Mill

1200 NW Naito Parkway
Portland, OR

| Available | | |
|-----------|----------|-----------------------|
| Suite | SF | Rate |
| 500 | 3,039 SF | \$30.00, Full Service |

- Beautiful six-story brick building
- Convenient close-in location
- Free on-site parking (2.75:1,000)
- Building conference room
- Bike storage
- Spectacular river & Pearl District views
- Fantastic access to Front Avenue & freeways
- Exposed brick, wood beams, & creative build-outs
- Viewing deck along jogging trails
- Energy Star rated building with a score of 93 for 2017

Recently recognized by BOMA as a leader in carbon efficiency

Contact

Josh Schweitz
Senior Vice President, Partner
503.221.2297
josh@kiddermathews.com

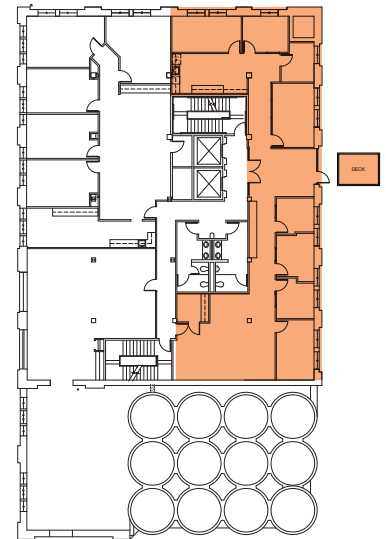
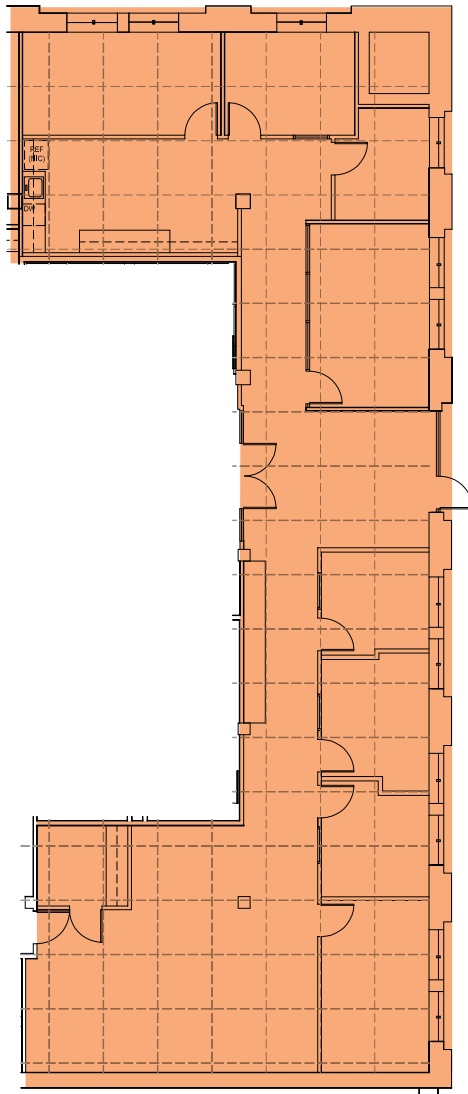
Travis Parrott
First Vice President, Partner
503.721.2735
tparrott@kiddermathews.com

Owner/Property Manager



Albers Mill

Suite 500



Contact

Josh Schweitz
Senior Vice President, Partner
503.221.2297
josh@kiddermathews.com

Travis Parrott
First Vice President, Partner
503.721.2735
tparrott@kiddermathews.com

Owner/PropertyManager

