

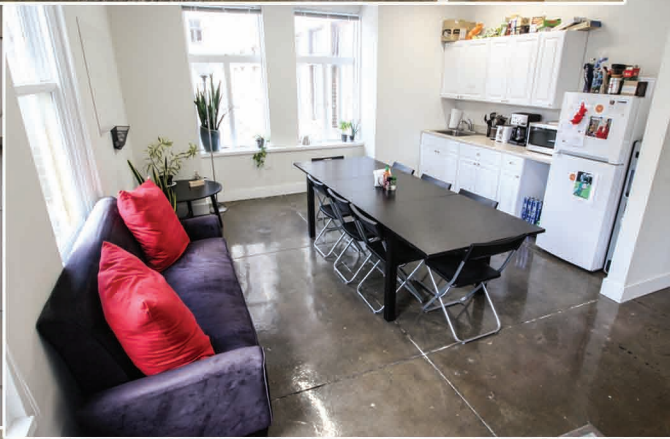
1420 WALNUT STREET

SUITE 924

CREATIVE OFFICE SPACE AVAILABLE

2,328 SF
\$23.00/SF + Electric

- Newly built-out space
- Polished concrete floors
- Exposed ceiling
- Newly renovated building lobby



DANIEL GUMMEL
PERNAFREDERICK COMMERCIAL REAL ESTATE
215-496-9675 X117
DG@PERNAFREDERICK.COM