



Office Space For Lease //  
2,000 - 6,380 SF Available

# 10803 THORN MINT ROAD

RANCHO BERNARDO SUBMARKET | SAN DIEGO, CA

Full first-floor office opportunity  
with great visibility and signage  
between I-15 and 4S Ranch

**MARC POSTHUMUS**

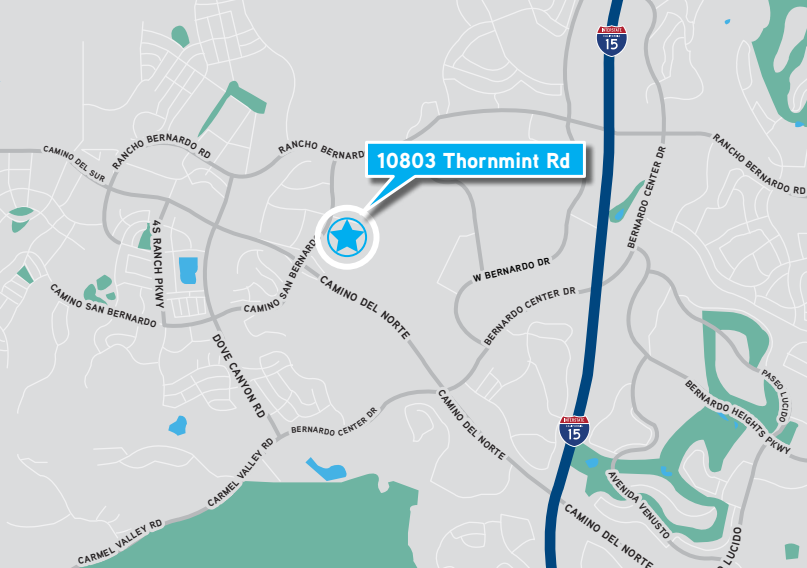
lic. no. 01440118  
marc.posthumus@colliers.com  
+1 858 401 3898

**KURTIS BLANCHARD**

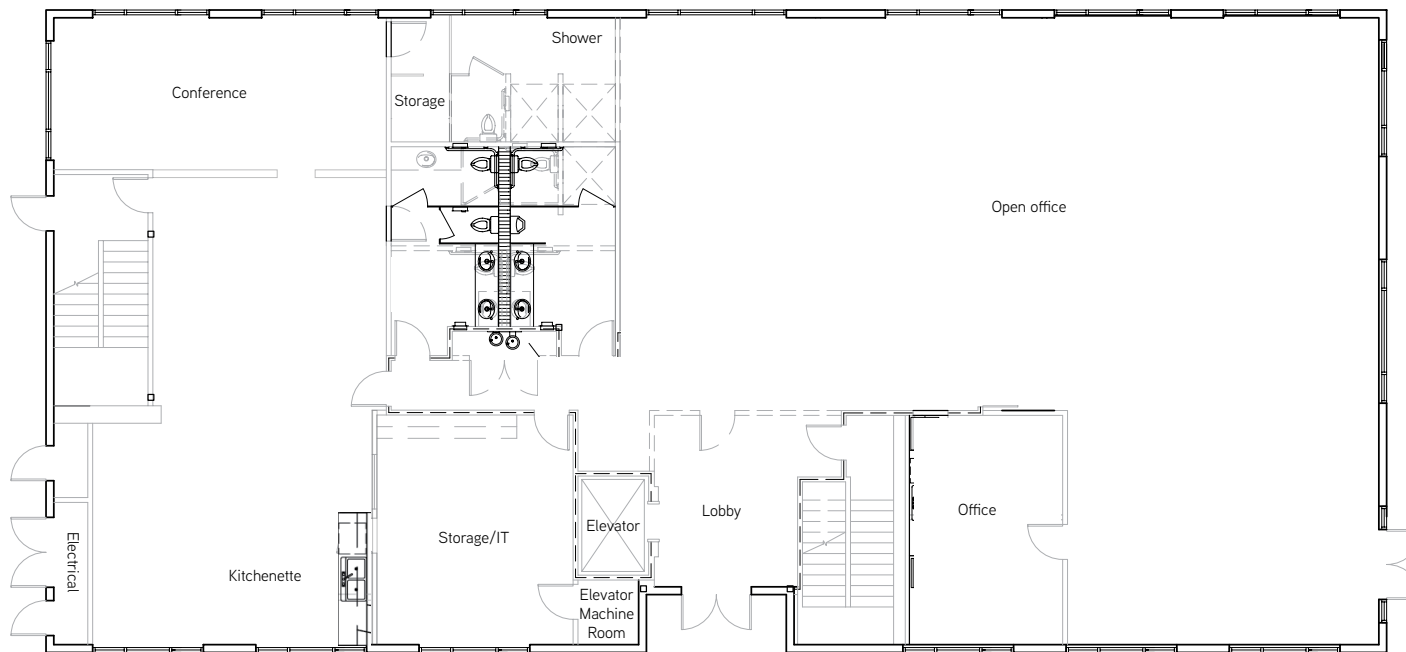
lic. no. 02114080  
kurtis.blanchard@colliers.com  
+1 760 670 8367







**FIRST FLOOR AS-BUILT**



**HIGHLIGHTS**

- Divisible: From ±2,000 to ±6,380 SF
- Above-standard Parking Ratio: 4.5/1,000 SF
- Extensive window line
- Great visibility and signage at entry to the office park

**LEASE RATE:** \$2.40 UTILITIES AND JANITORIAL



**CONTACT US**

**MARC POSTHUMUS**

lic. no. 01440118  
 marc.posthumus@colliers.com  
 +1 858 401 3898

**KURTIS BLANCHARD**

lic. no. 02114080  
 kurtis.blanchard@colliers.com  
 +1 760 670 8367

**COLLIERS INTERNATIONAL**

4350 La Jolla Village Drive  
 Suite 500  
 San Diego, CA 92122  
 colliers.com/sandiego

This document has been prepared by Colliers International for advertising and general information only. Colliers International makes no guarantees, representations or warranties of any kind, expressed or implied, regarding the information including, but not limited to, warranties of content, accuracy and reliability. Any interested party should undertake their own inquiries as to the accuracy of the information. Colliers International excludes unequivocally all inferred or implied terms, conditions and warranties arising out of this document and excludes all liability for loss and damages arising there from. This publication is the copyrighted property of Colliers International and/or its licensor(s). ©2020 All rights reserved.