



FOR LEASE

6751-6753 Hollywood Blvd

LOS ANGELES, CA 90028

The Hollywood office building that can be your own!

FLOORS 2-7 now available

UP TO 58,757 RSF of contiguous office space

BUILDING SIGNAGE and naming rights available

CAN DELIVER up to 500 parking spaces

PRESTIGIOUS Hollywood Blvd location

UNOBSTRUCTED views

SECURED covered parking of up to 3.5/1000

NEGOTIABLE asking rate

JOHN ANTHONY, SIOR
213.225.7218
john.anthony@kidder.com
LIC N° 01226464

CHRISTOPHER STECK
213.225.7231
christopher.steck@kidder.com
LIC N° 01841338

CHRISTOPHER GIORDANO
213.225.7219
christopher.giordano@kidder.com
LIC N° 01928706

Kidder Mathews

KIDDER.COM

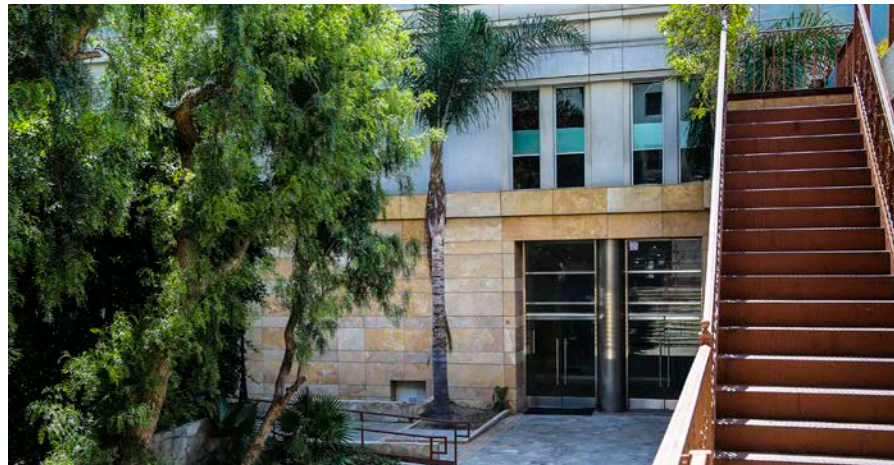
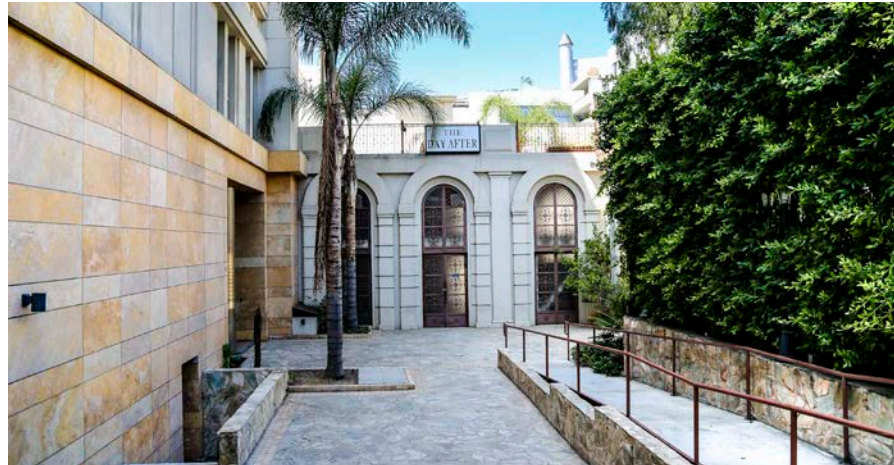
This information supplied herein is from sources we deem reliable. It is provided without any representation, warranty, or guarantee, expressed or implied as to its accuracy. Prospective Buyer or Tenant should conduct an independent investigation and verification of all matters deemed to be material, including, but not limited to, statements of income and expenses. Consult your attorney, accountant, or other professional advisor.



FOR LEASE

6751-6753 Hollywood Blvd

LOS ANGELES, CA 90028



JOHN ANTHONY, SIOR

213.225.7218

john.anthony@kidder.com

LIC N° 01226464

CHRISTOPHER STECK

213.225.7231

christopher.steck@kidder.com

LIC N° 01841338

CHRISTOPHER GIORDANO

213.225.7219

christopher.giordano@kidder.com

LIC N° 01928706

KIDDER.COM

This information supplied herein is from sources we deem reliable. It is provided without any representation, warranty, or guarantee, expressed or implied as to its accuracy. Prospective Buyer or Tenant should conduct an independent investigation and verification of all matters deemed to be material, including, but not limited to, statements of income and expenses. Consult your attorney, accountant, or other professional advisor.

km Kidder Mathews

FOR LEASE

6751-6753 Hollywood Blvd

LOS ANGELES, CA 90028

IMMEDIATE

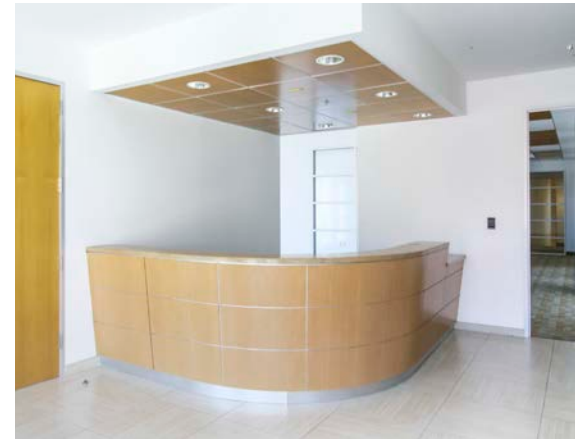
AVAILABILITY

58,757

RENTABLE SF

FLEXIBLE

DEAL TERMS DEPENDING UPON RSF
AND TERM



JOHN ANTHONY, SIOR

213.225.7218

john.anthony@kidder.com

LIC N° 01226464

CHRISTOPHER STECK

213.225.7231

christopher.steck@kidder.com

LIC N° 01841338

CHRISTOPHER GIORDANO

213.225.7219

christopher.giordano@kidder.com

LIC N° 01928706

KIDDER.COM

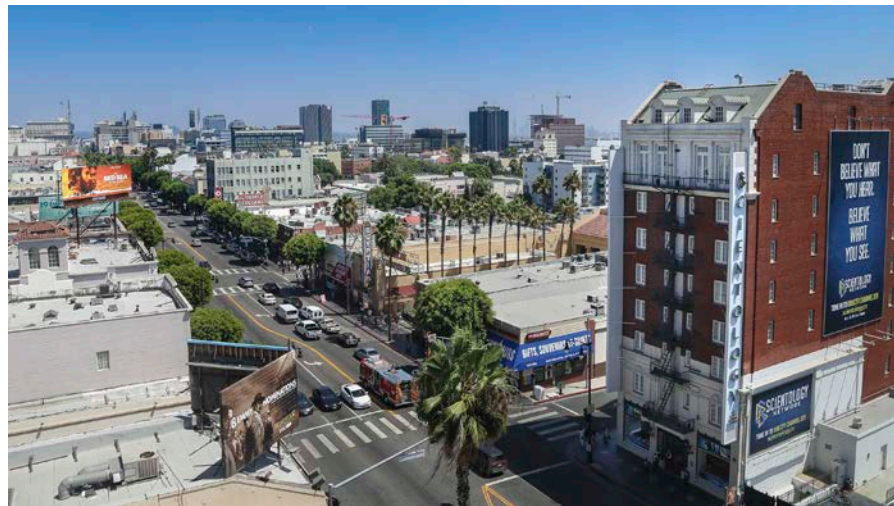
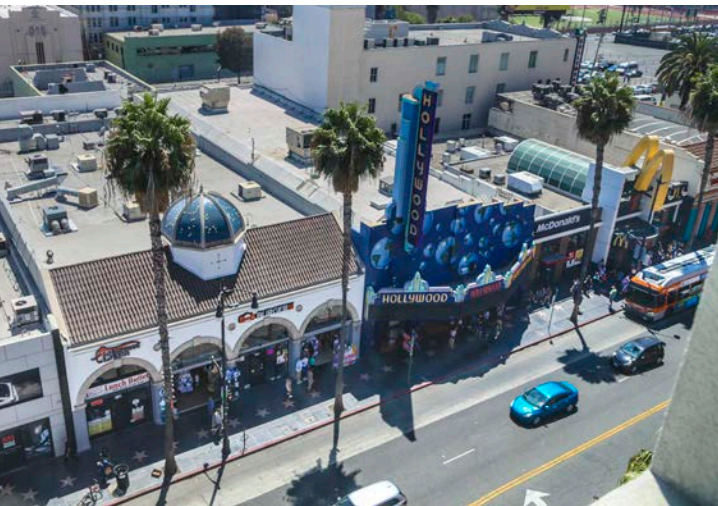


This information supplied herein is from sources we deem reliable. It is provided without any representation, warranty, or guarantee, expressed or implied as to its accuracy. Prospective Buyer or Tenant should conduct an independent investigation and verification of all matters deemed to be material, including, but not limited to, statements of income and expenses. Consult your attorney, accountant, or other professional advisor.

FOR LEASE

6751-6753 Hollywood Blvd

LOS ANGELES, CA 90028



JOHN ANTHONY, SIOR

213.225.7218

john.anthony@kidder.com

LIC N° 01226464

CHRISTOPHER STECK

213.225.7231

christopher.steck@kidder.com

LIC N° 01841338

CHRISTOPHER GIORDANO

213.225.7219

christopher.giordano@kidder.com

LIC N° 01928706

KIDDER.COM

This information supplied herein is from sources we deem reliable. It is provided without any representation, warranty, or guarantee, expressed or implied as to its accuracy. Prospective Buyer or Tenant should conduct an independent investigation and verification of all matters deemed to be material, including, but not limited to, statements of income and expenses. Consult your attorney, accountant, or other professional advisor.

km Kidder Mathews

FOR LEASE

6751-6753 Hollywood Blvd

LOS ANGELES, CA 90028

AVAILABILITIES

2nd Floor	9,747 RSF
3rd Floor	9,746 RSF
4th Floor	9,773 RSF
5th Floor	9,815 RSF
6th Floor	9,848 RSF
7th Floor	9,828 RSF

JOHN ANTHONY, SIOR

213.225.7218

john.anthony@kidder.com

LIC N° 01226464

CHRISTOPHER STECK

213.225.7231

christopher.steck@kidder.com

LIC N° 01841338

CHRISTOPHER GIORDANO

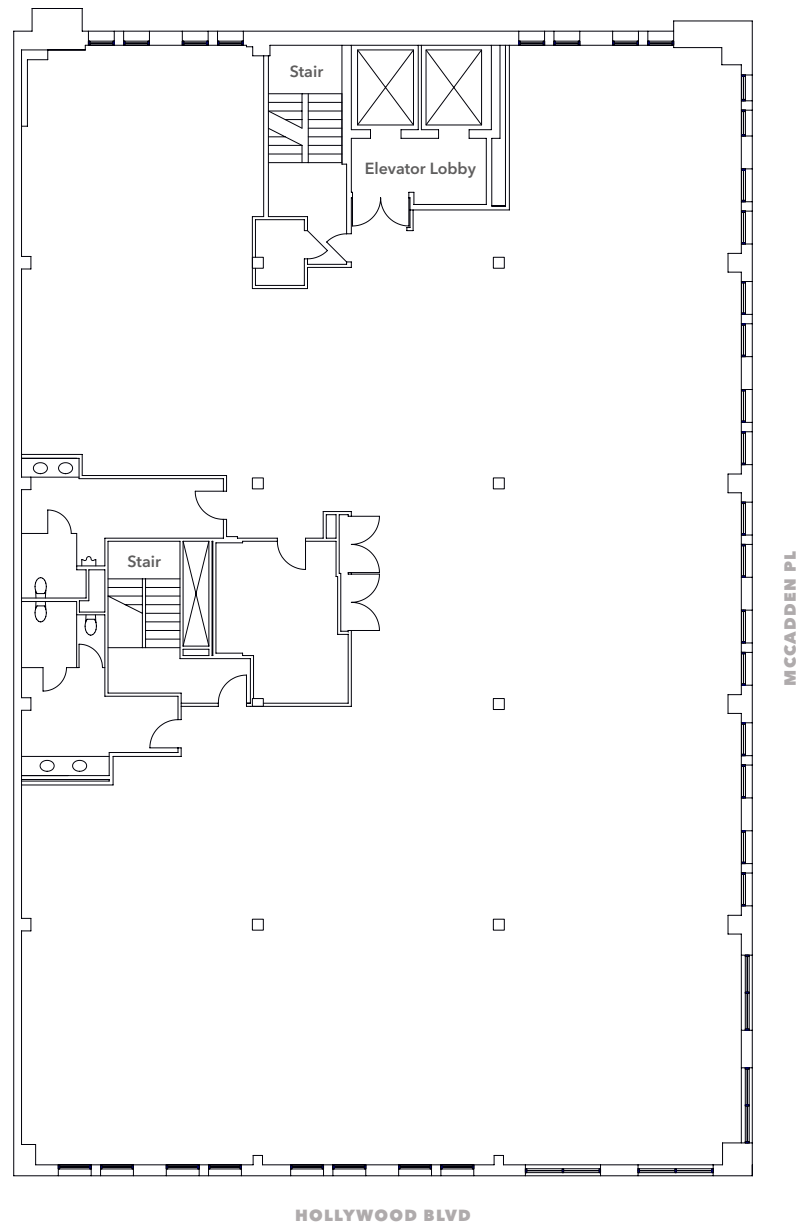
213.225.7219

christopher.giordano@kidder.com

LIC N° 01928706

Floor Plan

TYPICAL floor plate for floors 2-7



KIDDER.COM

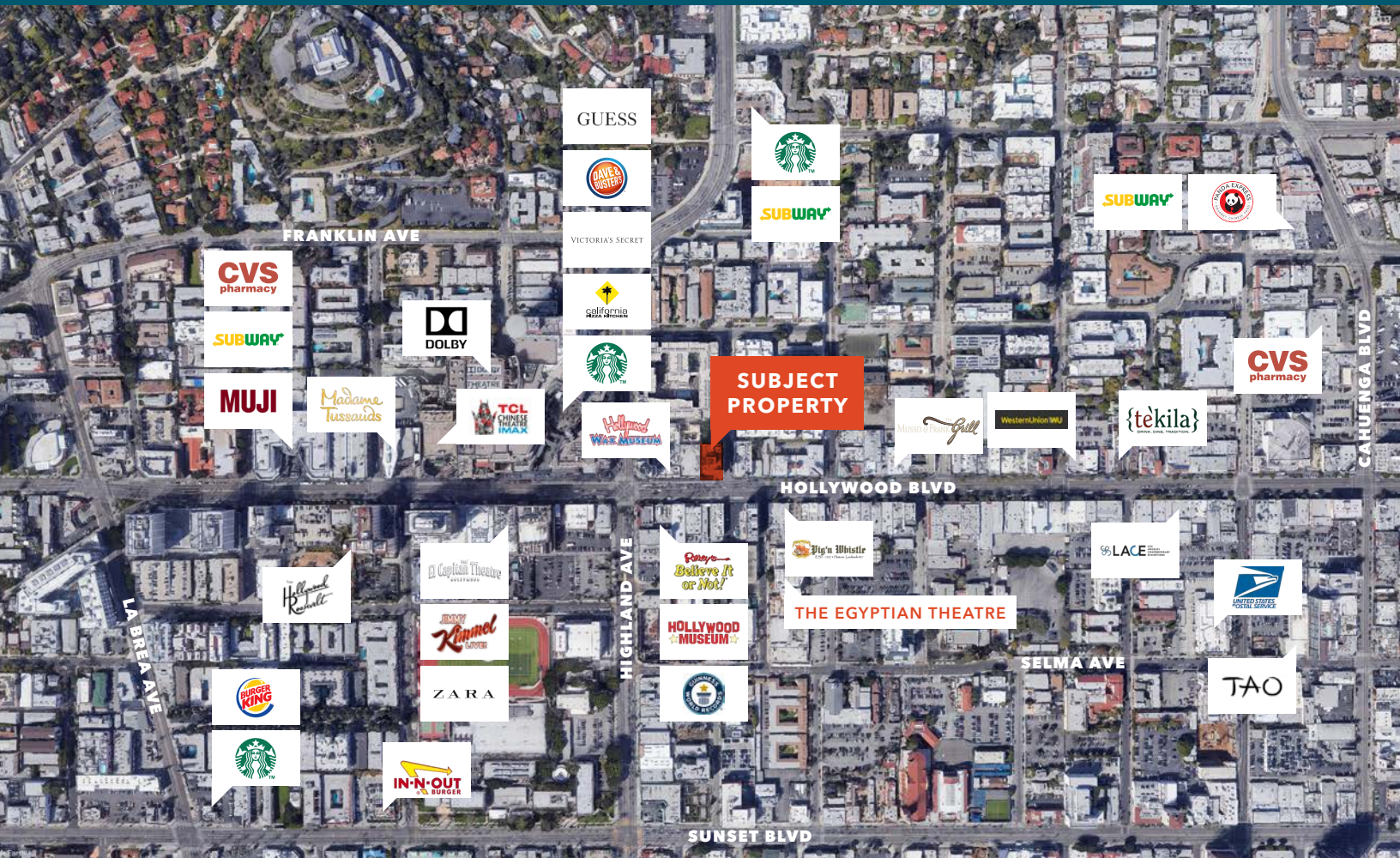
km Kidder Mathews

This information supplied herein is from sources we deem reliable. It is provided without any representation, warranty, or guarantee, expressed or implied as to its accuracy. Prospective Buyer or Tenant should conduct an independent investigation and verification of all matters deemed to be material, including, but not limited to, statements of income and expenses. Consult your attorney, accountant, or other professional advisor.

FOR LEASE

6751-6753 Hollywood Blvd

LOS ANGELES, CA 90028



Full building renovation completed in January 2005. It features a new electrical system and each floor has an independently controlled HVAC system. It is within walking distance to the Highland and Hollywood project, the Kodak building, Academy Awards, Grauman's Chinese Theatre, The Roosevelt Hotel, and the Metro Red Line station. Seven-story office building in excellent location on Hollywood Blvd, a block east of Hollywood & Highland intersection. 26,716 RSF available. As much parking as needed. Located in the heart of Hollywood.

Situated on the corner of Hollywood Blvd and McCadden Pl, horizontal from Starbucks on the eastern block of Hollywood Blvd / Highland Ave intersection. The building is a short walk to fine shopping, dining, and entertainment at Hollywood & Highland, Loews Hotel, and the Metro Red Line station. Flanked by the Jefferson at Hollywood apartments and the Rubix Luxury Lofts, some 280 units and 220 units respectively. Additionally, Musician's Institute (MI), a premier music academy, is located directly across the street. Location is excellent!

JOHN ANTHONY, SIOR

213.225.7218

john.anthony@kidder.com

LIC N° 01226464

CHRISTOPHER STECK

213.225.7231

christopher.steck@kidder.com

LIC N° 01841338

CHRISTOPHER GIORDANO

213.225.7219

christopher.giordano@kidder.com

LIC N° 01928706

KIDDER.COM

This information supplied herein is from sources we deem reliable. It is provided without any representation, warranty, or guarantee, expressed or implied as to its accuracy. Prospective Buyer or Tenant should conduct an independent investigation and verification of all matters deemed to be material, including, but not limited to, statements of income and expenses. Consult your attorney, accountant, or other professional advisor.

 **Kidder
Mathews**