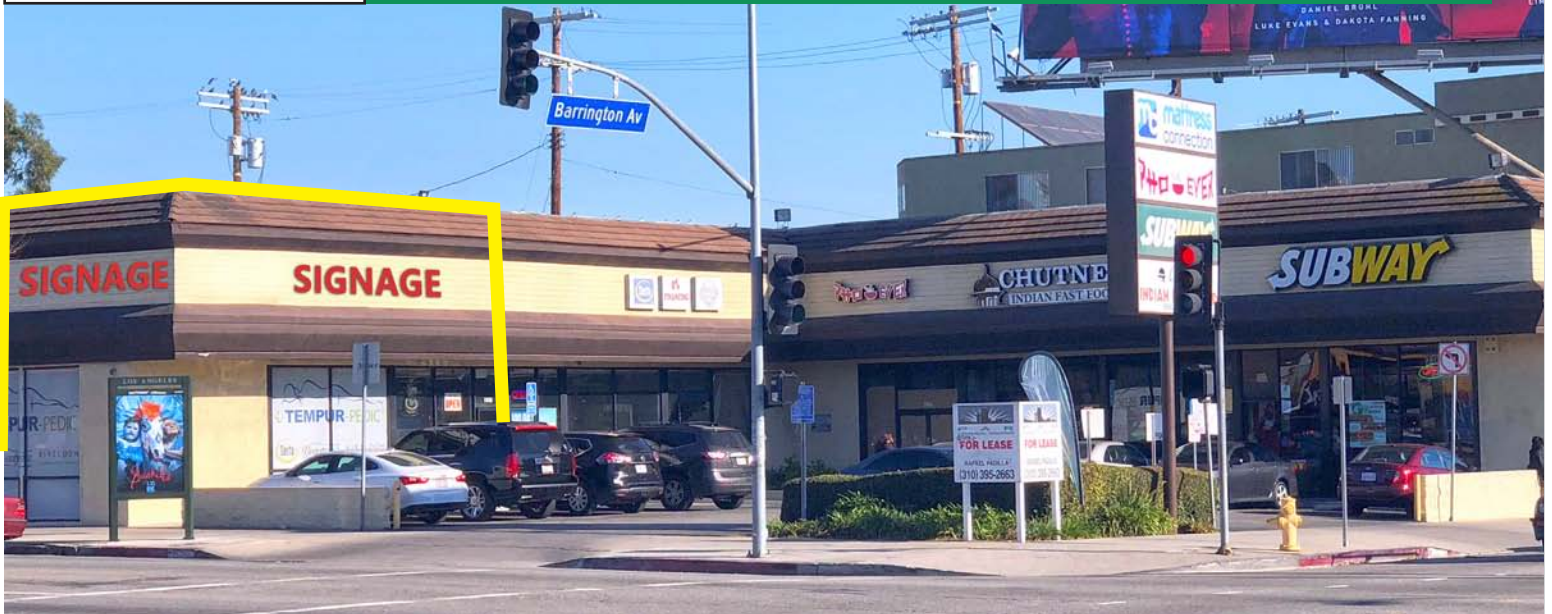




HARD CORNER RETAIL SPACE FOR LEASE



2400 BARRINGTON AVENUE, LOS ANGELES, CA 90064

SIZE

Approximately 1,310 Square Feet

RATE

\$4.35 per square foot per month, NNN

TRIPLE NET

NNN estimated to be \$1.15 per square foot per month

PARKING

Shared customer parking

TERM

3 - 5 years

AVAILABLE

Immediately



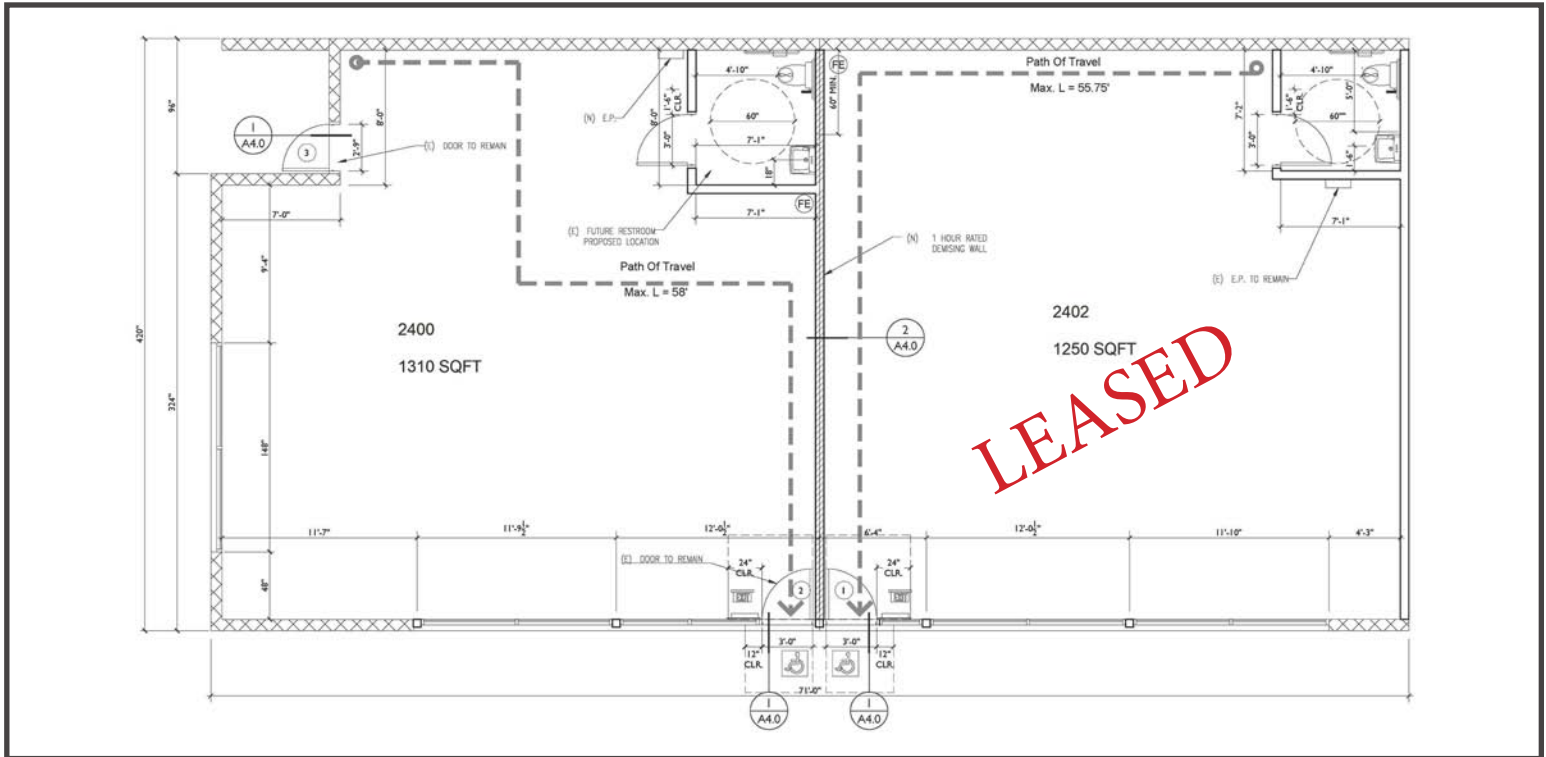
- Signage facing Pico Boulevard as well as Barrington Avenue
- High traffic counts in excess of 54,000 vehicles per day
- Easy access from I-10 and 405 freeways

RAFAEL PADILLA
310.395.2663 x102
RAFAEL@PARCOMMERCIAL.COM
Lic# 00960188

ARTHUR PETER
310.395.2663 x101
ARTHUR@PARCOMMERCIAL.COM
Lic# 01068613

1250 6th St., #303, Santa Monica, CA 90401 • 310.395.2663 • www.parcommercial.com

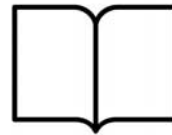
FLOOR PLAN & DEMOGRAPHICS



Within
1 Mile



Housing Units
15,949
34.20% owner occupied



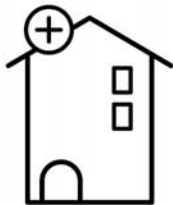
Educational Attainment
62%
with college or higher degree



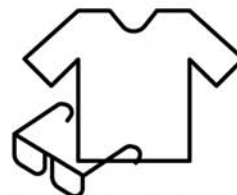
Estimated Population
33,564
10.77% growth 2010-2017
3.97% growth 2017-2022



Average Household Income
\$101,940
43% earn more than \$100k



Median Home Value
\$797,748



Apparel & Services
\$436,386
2017 yearly consumer spending

RAFAEL PADILLA
310.395.2663 x102
RAFAEL@PARCOMMERCIAL.COM
Lic# 00960188

ARTHUR PETER
310.395.2663 x101
ARTHUR@PARCOMMERCIAL.COM
Lic# 01068613

