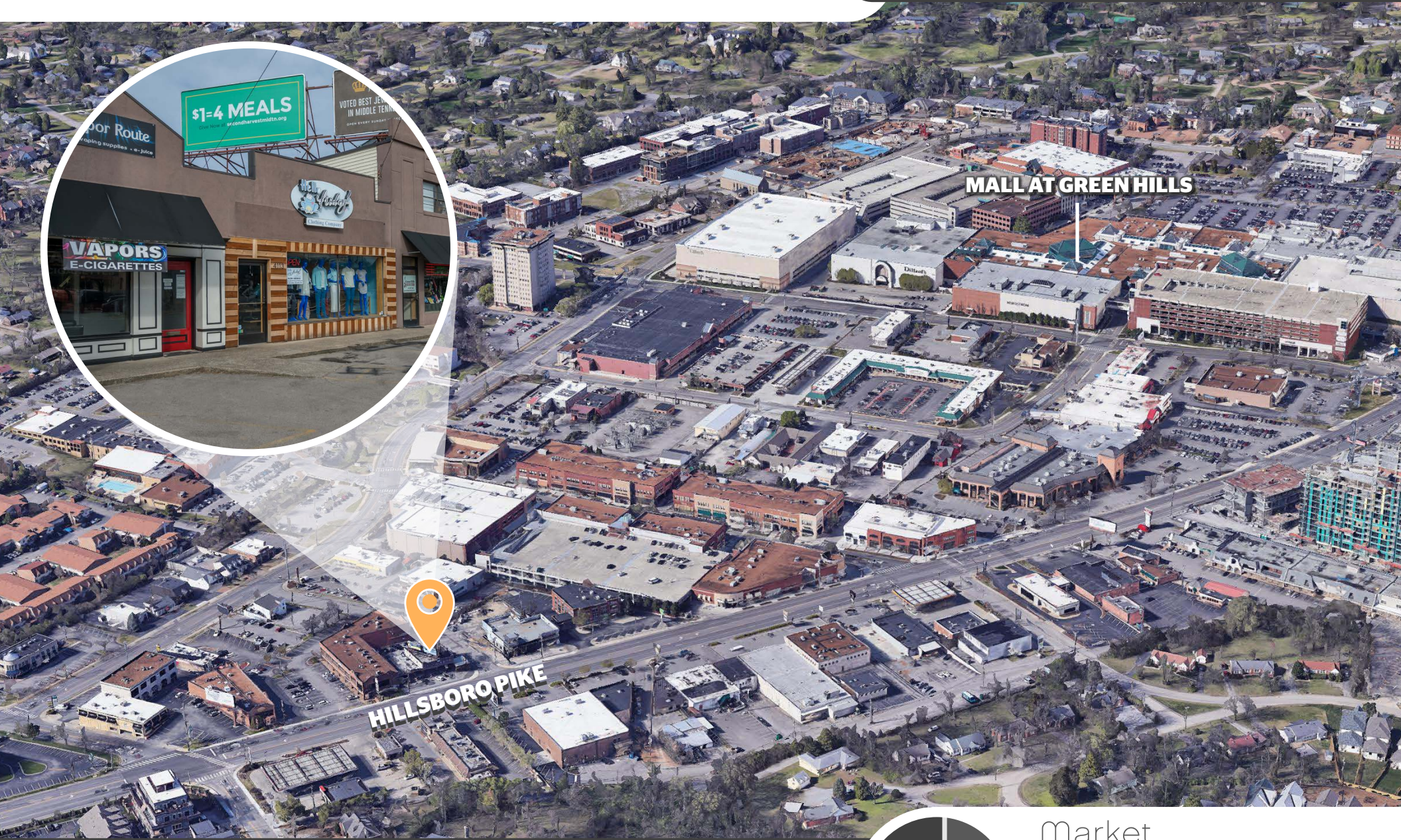


HIGH PROFILE GREEN HILLS LOCATION | For Lease

4113-4115 Hillsboro Pike, Nashville, TN



KEVIN FULTON | Managing Partner

7003 Chadwick Drive | Suite 208 | Brentwood, TN 37207
615.345.4455 | kfulton@marketretailpartners.com



Market
Retail
Partners

real estate
group



MALL AT GREEN HILLS

Hillsboro Pike (28,322 VPD)



4113-4115 Hillsboro Pike
Nashville TN 37215



Available Now



Corner Location
2 points of ingress
and egress.



1,000-2,500
SF Available



Parcel Info:
Lot Size: 94 x 150
Lot SF: 14,810
Acreage: 0.34



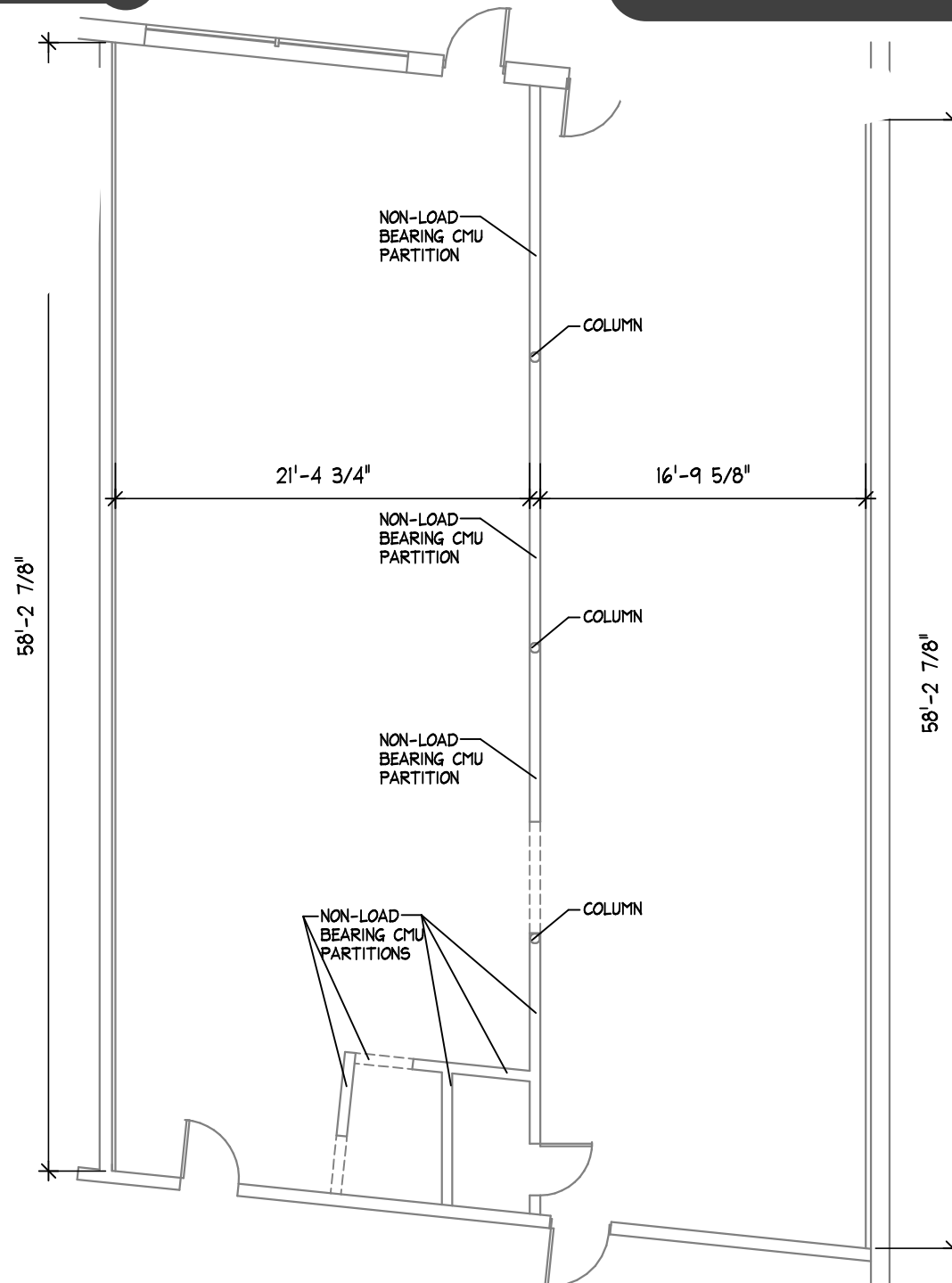
Built in 1954
Remodeled in 1975.



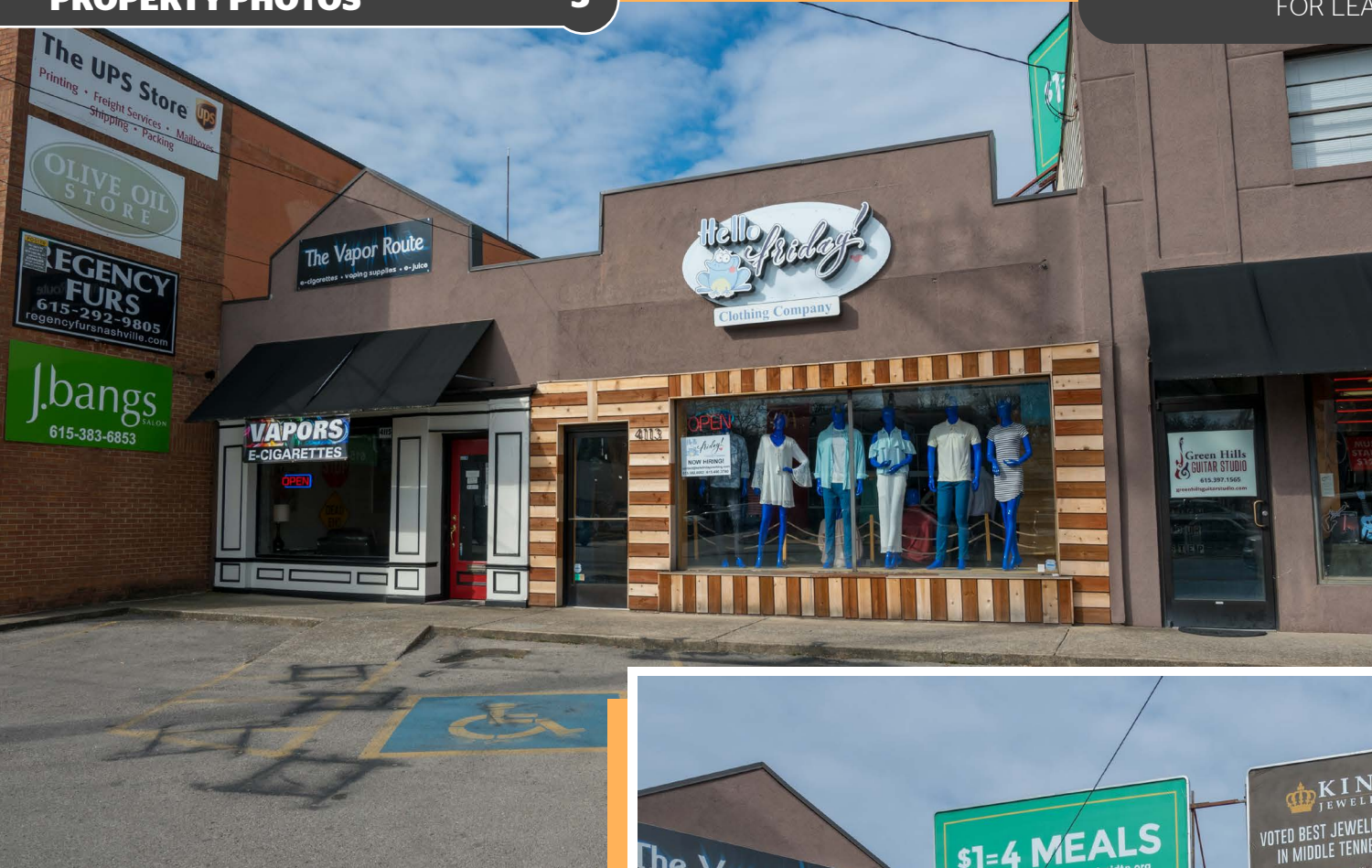
Parking
+/- 30 shared spaces



Signage
Excellent opportunity
for signage on building
fronting Hillsboro Pike











Belle Grand- 31,000 SF of Office

Hillsboro High School

Greenbriar Village

Hillsboro Circle

Village Green

Hillsboro Pike

SITE

Hobbs Road

KEY FACTS

70,798

Population



Average Household Size

37.1

Median Age

\$83,884

Median Household Income

EDUCATION

2%

No High School Diploma



7%

High School Graduate



15%

Some College



76%

Bachelor's/Grad/Prof Degree

BUSINESS



4,132

Total Businesses



130,411

Total Employees

EMPLOYMENT



86%

White Collar

4%

Blue Collar



10%

Services

2.1%

Unemployment Rate

INCOME



\$83,884

Median Household Income



\$61,392

Per Capita Income



\$144,777

Median Net Worth

Households By Income

The largest group: \$200,000+ (18.0%)

The smallest group: \$15,000 - \$24,999 (5.7%)

Indicator	Value	Difference	
<\$15,000	8.0%	-3.6%	
\$15,000 - \$24,999	5.7%	-4.6%	
\$25,000 - \$34,999	6.6%	-4.0%	
\$35,000 - \$49,999	10.5%	-4.9%	
\$50,000 - \$74,999	14.3%	-4.4%	
\$75,000 - \$99,999	11.7%	-0.3%	
\$100,000 - \$149,999	16.4%	+4.8%	
\$150,000 - \$199,999	8.8%	+4.2%	
\$200,000+	18.0%	+12.9%	

*1 Mile Radius from www.STDB.com



Market
Retail
Partners

real estate
group



Kevin Fulton | Managing Partner

7003 Chadwick Drive, Suite 208, Brentwood, TN 37207
P 615.345.4455 | M 615.796.4076
E kfulton@marketretailpartners.com