

25,962 SF OFFICE BUILDING FOR LEASE



Segale Business Park 18125 Andover Park West Tukwila, WA 98188

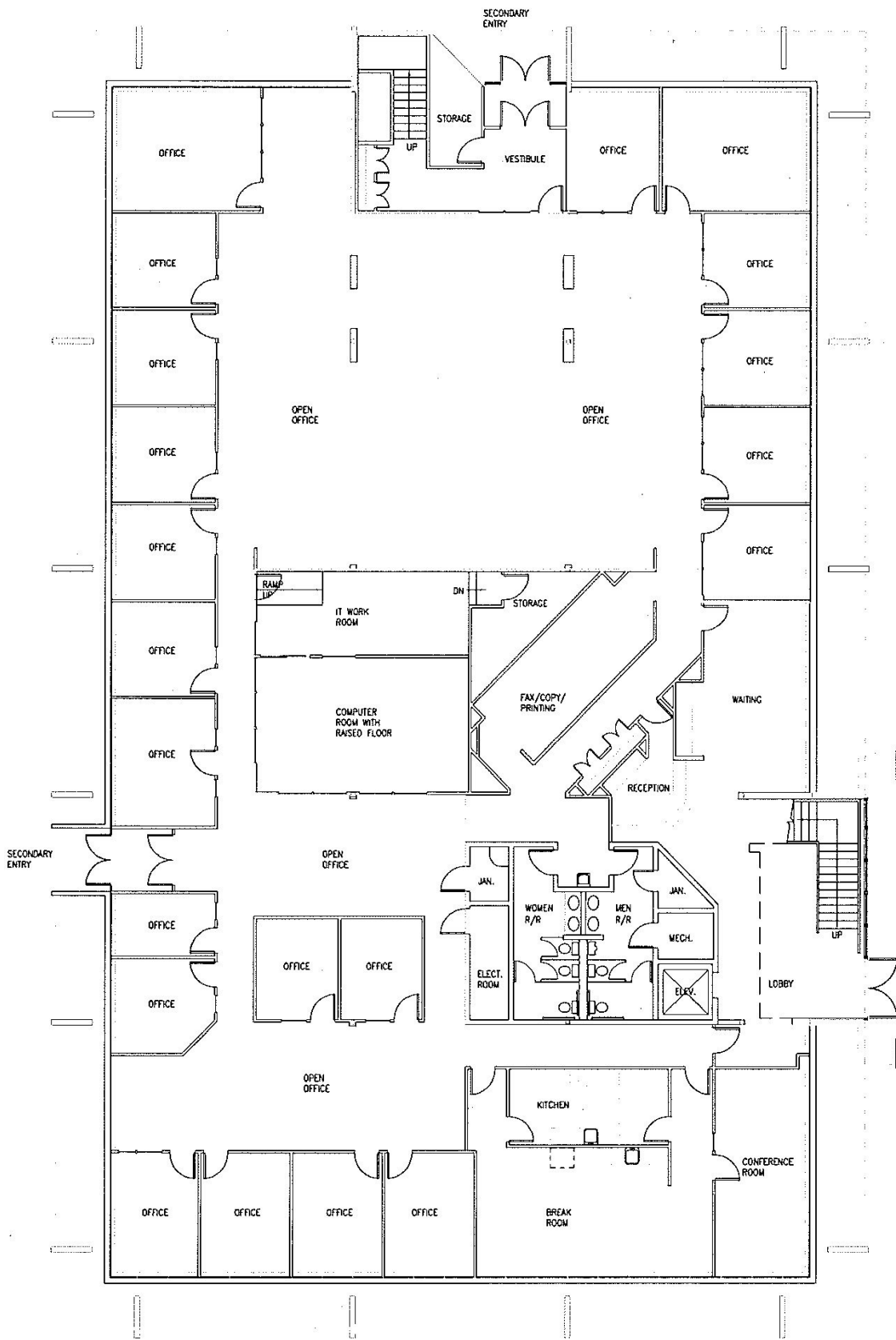
- Two Story Office Building totaling 25,962 square feet
- Centrally located between Seattle, Bellevue and Tacoma
- Convenient access to I-5, I-405 and Hwy 167
- Minutes to Seattle Tacoma International Airport
- Minutes from retail, dining, theaters, and services
- 85 free parking stalls
- Segale Business Park is located near the beautiful Green River featuring nearby parks and trail systems
- 845 square foot computer room complete raised flooring, Liebert cooling system and Halon fire protection

SEGALE PROPERTIES

PO Box 88028 Tukwila, WA 98138
www.segaleproperties.com

Diane M. Decker, CPM®
206.575.2000
ddecker@segaleproperties.com

First Floor Plan

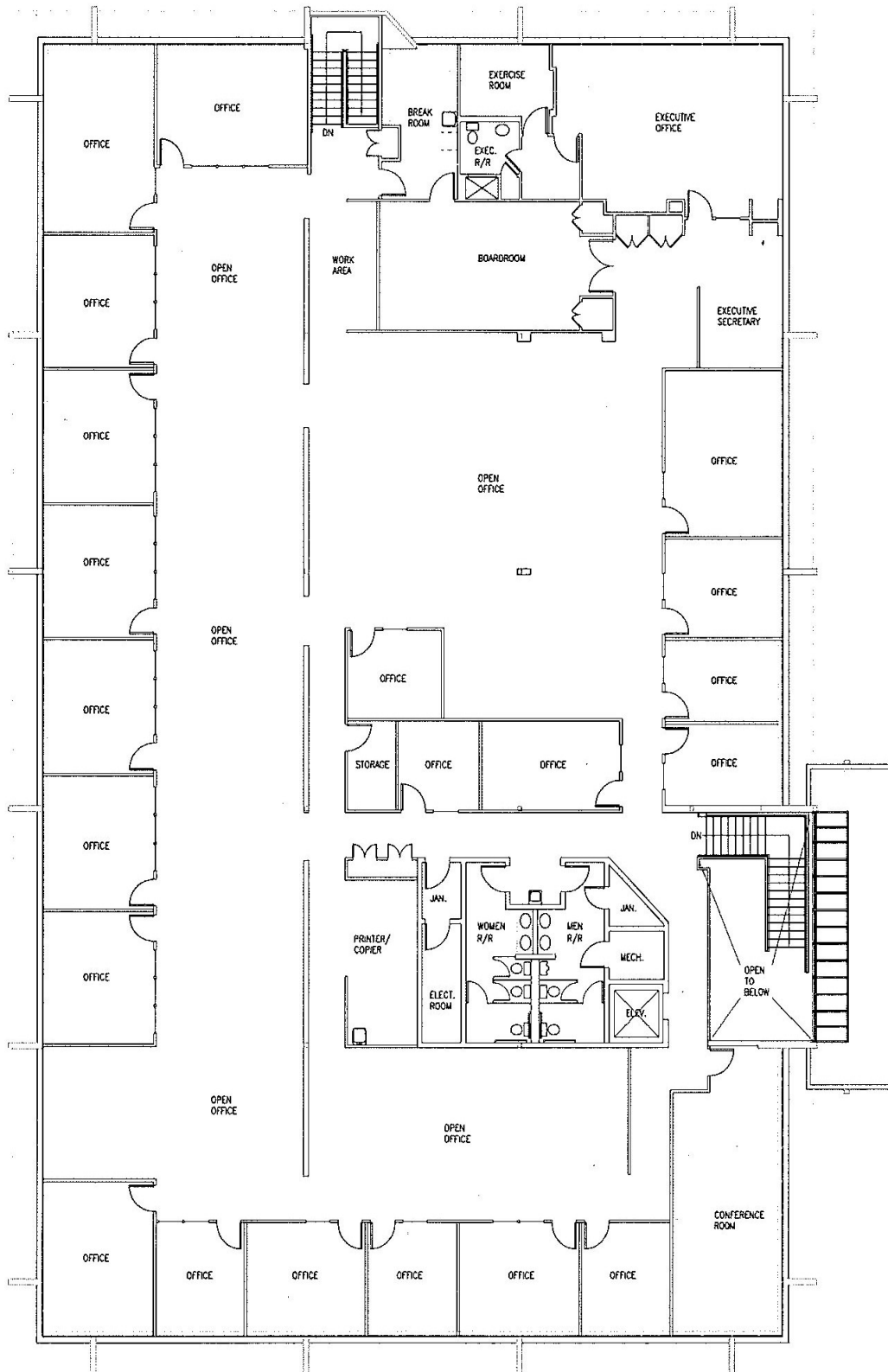


SEGALE PROPERTIES

PO Box 88028 Tukwila, WA 98138
www.segaleproperties.com

Diane M. Decker, CPM®
206.575.2000
ddecker@segaleproperties.com

Second Floor Plan



SEGALE PROPERTIES

PO Box 88028 Tukwila, WA 98138
www.segaleproperties.com

Diane M. Decker, CPM®
206.575.2000
ddecke@segaleproperties.com