

2360 BROADWAY



CONCEPTUAL RENDERING

SPACE DETAILS

LOCATION

Northeast corner of West 86th Street

APPROXIMATE SIZE

Ground Floor 6,786 SF

Basement 4,048 SF

Total 10,834 SF

CEILING HEIGHT

Ground Floor 20 FT

Basement 10 FT

FRONTAGE

100 FT on Broadway

100 FT on West 86th Street

TERM

Long Term

POSSESSION

Immediate

SITE STATUS

Currently vacant

NEIGHBORS

Zabar's, PC Richards, Brooks Brothers, Origins, AMC Theaters, Juice Generation, Banana Republic, Murray's Sturgeon Shop, Blue Mercury, Victoria's Secret, Chipotle Mexican Grill, 5 Napkin Burger and Barnes & Noble

COMMENTS

Tremendous flagship opportunity

Located at heavily trafficked intersection, adjacent to entrance/exit of the subway station 1

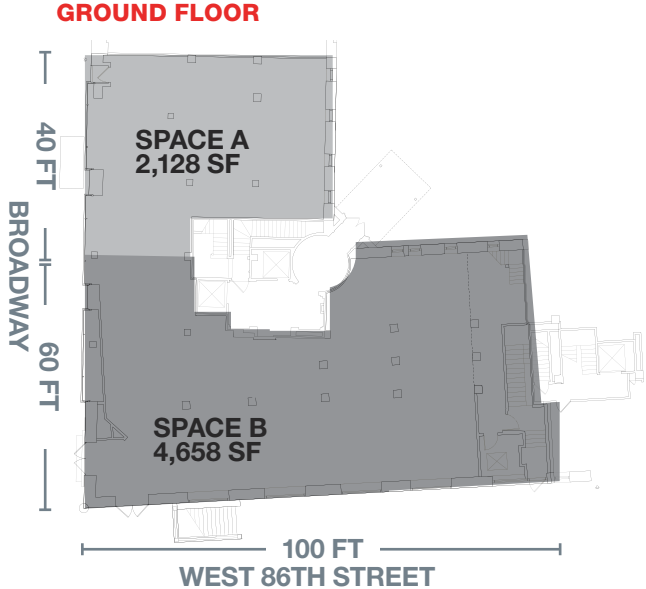


FLOOR PLANS

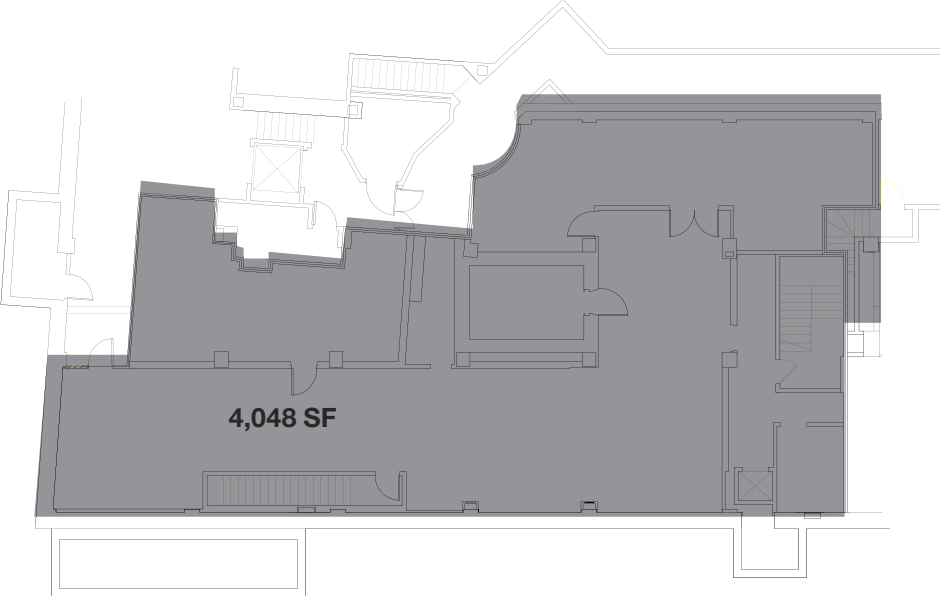
GROUND FLOOR



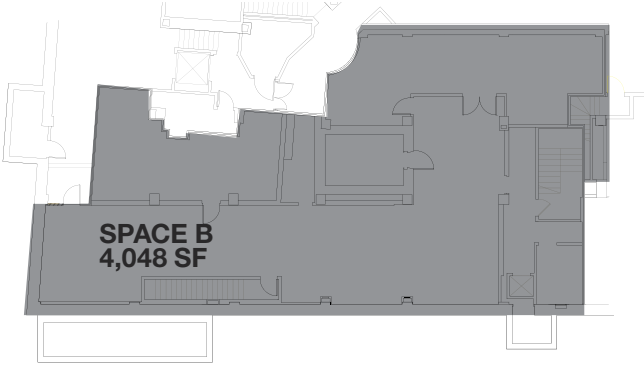
SCENARIO OPTIONS



BASEMENT



BASEMENT



AREA RETAIL



⊕ COMING SOON

CONTACT EXCLUSIVE AGENT

HARRISON ABRAMOWITZ
212.372.2467
habramowitz@ngkf.com



NGKF.COM

© 2019 NEWMARK KNIGHT FRANK RETAIL. The information contained herein has been obtained from sources deemed reliable but has not been verified and no guarantee, warranty or representation, either express or implied, is made with respect to such information. Terms of sale or lease and availability are subject to change or withdrawal without notice.