

1051 NORTH RUSH STREET

Unique Gold Coast 2nd Floor Retail / Showroom / Office Opportunity



For leasing information contact:

ADAM SECHER

312.275.3130

adam@baumrealty.com

 **BAUM**
REALTY GROUP

 **Colliers**
INTERNATIONAL

2nd floor elevator lobby entrance





Join new ground floor tenant Vans

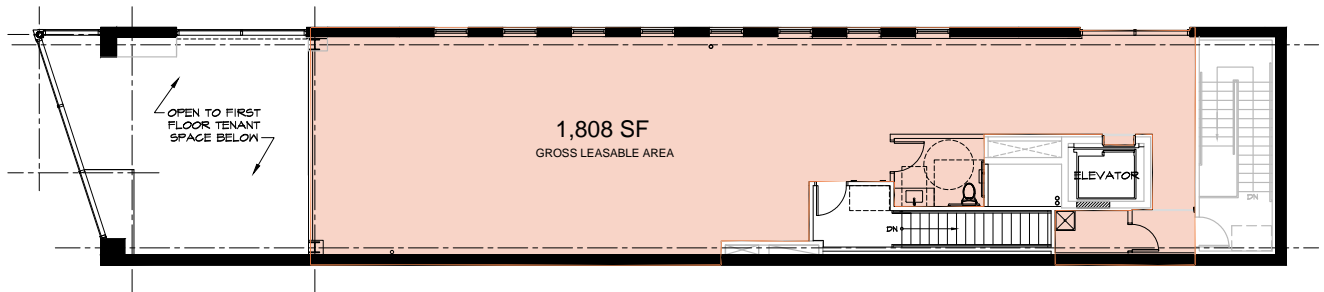


2nd floor elevator
lobby entrance

1051 North Rush Street

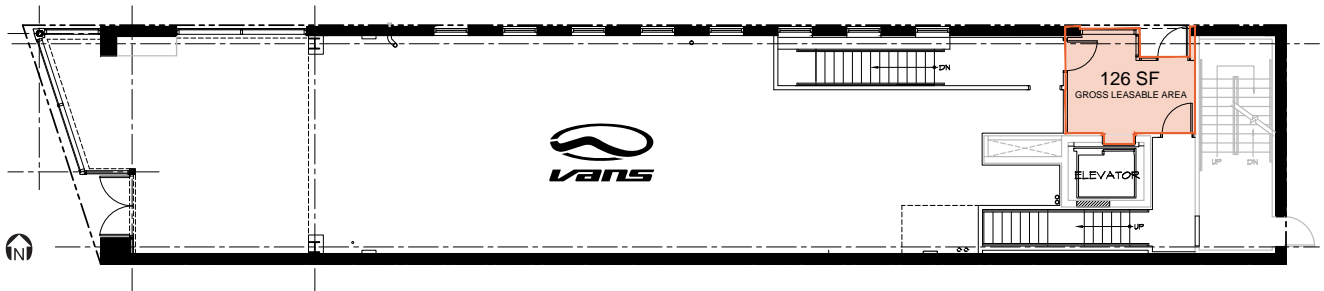
High-profile 2nd floor space in the Gold Coast on dynamic Rush Street

- ▶ 1,934 SF with private entrance on Cedar Street
- ▶ Brand new redevelopment with prime visibility and unique branding potential
- ▶ Available immediately



Floor Plan - Second Floor

E. CEDAR STREET



Floor Plan - First Floor

Demographic Summary

| | 0.25 MI | 0.5 MI | 1 MI |
|------------------------|-----------|-----------|-----------|
| Average HHI | \$143,606 | \$147,077 | \$146,437 |
| Daytime Population | 18,434 | 69,733 | 203,114 |
| Residential Population | 13,495 | 40,778 | 93,076 |

For more information contact:

ADAM SECHER

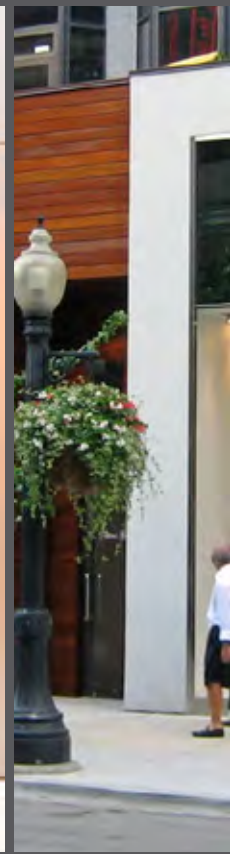
Principal

312.275.3130

adam@baumrealty.com



High-end fashion and restaurant co-tenancy includes Vans, Urban Outfitters relocation, Ted Baker, Scoop NYC, Barneys NY, Gibsons Steakhouse, Tavern on Rush, and Lux Bar among others





BARNEYS
NEW YORK



URBAN OUTFITTERS



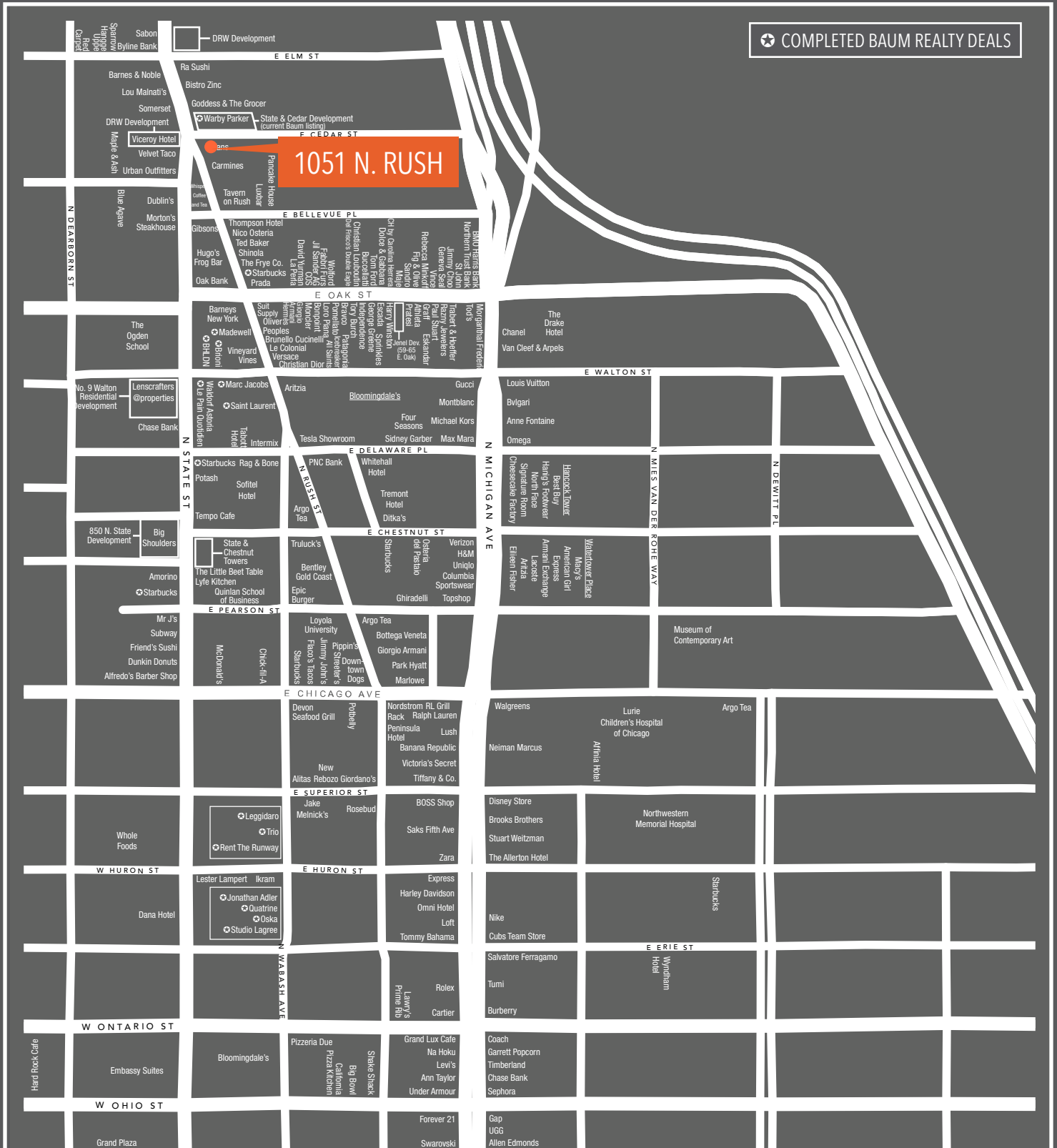
LUXBAR

TED BAKER
LONDON



1051 NORTH RUSH STREET

Unique Gold Coast 2nd Floor Retail / Showroom / Office Opportunity



For more information contact:

ADAM SECHER

312.275.3130

adam@baumrealty.com

© 2015 All information supplied is from sources deemed reliable and is furnished subject to errors, omissions, modifications, removal of the listing from sale or lease, and to any listing conditions, including the rates and manner of payment of commissions for particular offerings, the terms of which are available to principals or duly licensed brokers. While we believe these assumptions are reasonable, there can be no assurance that any of these estimates and projections will prove to have been correct. Therefore, actual results may vary materially from these forward-thinking estimates and projections. Any square footage dimensions set forth are approximate.

