

# Warehouse/Light Industrial for Lease

233 Michelle Court, South San Francisco



## ±9,600 Square Feet Available

As exclusive agents, we are pleased to offer the following space:



- ◆ ±9,600 Square Feet Total
- ◆ ±617 Square Foot Office
- ◆ 2 Grade Level Doors
- ◆ ±20' Clear Height
- ◆ Insulated Warehouse
- ◆ Lease Term: 3 to 5 Years
- ◆ Available Now
- ◆ Rental Rate: \$1.15/sf/month Net (±\$0.187/sf Net Expenses)

Jay Leslie Senior Managing Director 650.358.5273 [jleslie@newmarkccarey.com](mailto:jleslie@newmarkccarey.com) CA RE License #01244555

**Newmark  
Knight Frank**

2950 South Delaware Street, Suite 125, San Mateo, CA 94403

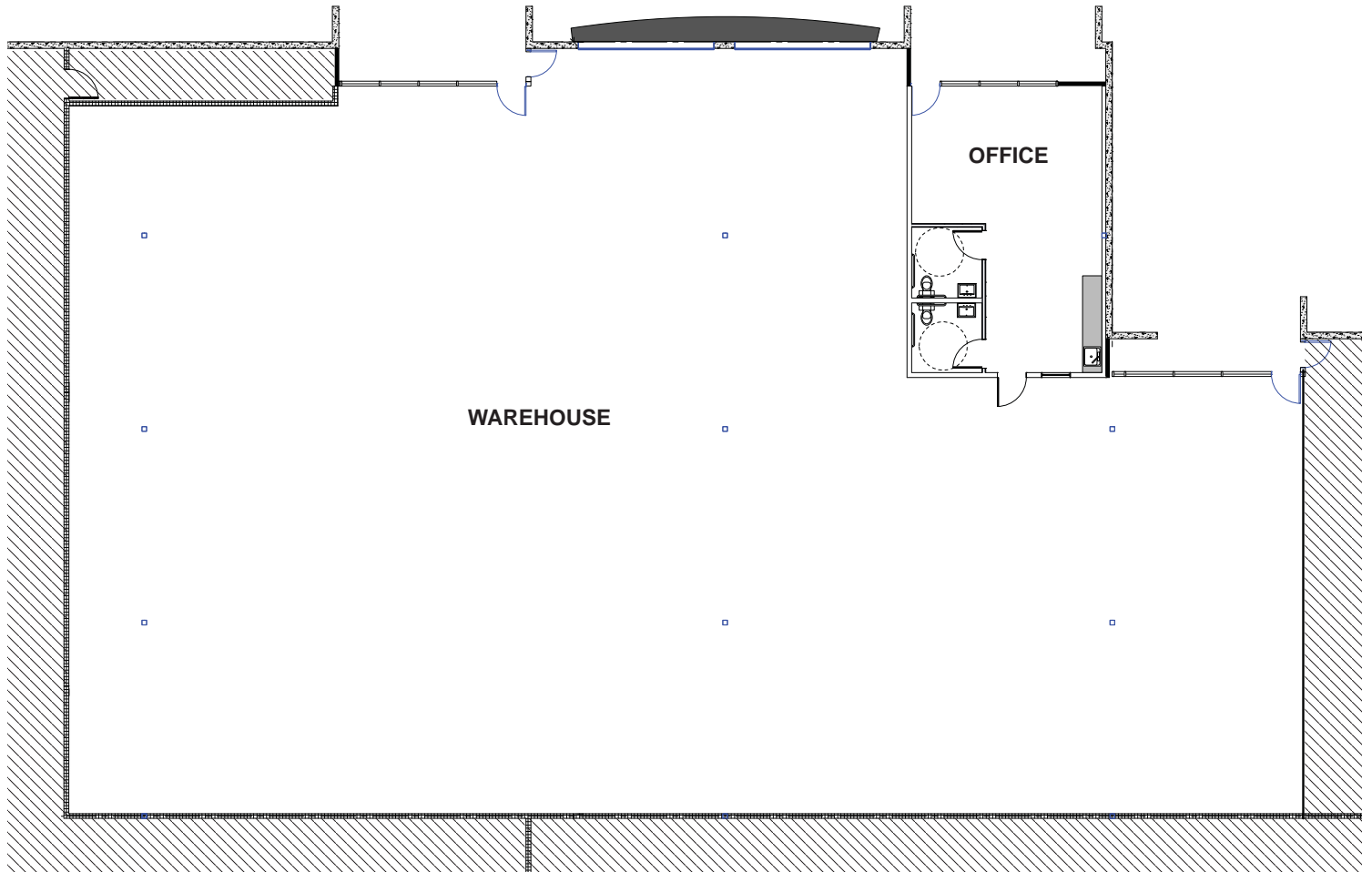
[www.ngkf.com](http://www.ngkf.com)

Procuring broker shall only be entitled to a commission, calculated in accordance with the rates approved by our principal only if such procuring broker executes a brokerage agreement acceptable to us and our principal and the conditions as set forth in the brokerage agreement are fully and unconditionally satisfied. Although all information furnished regarding property for sale, rental, or financing is from sources deemed reliable, such information has not been verified and no express representation is made nor is any to be implied as to the accuracy thereof and it is submitted subject to errors, omissions, change of price, rental or other conditions, prior sale, lease or financing, or withdrawal without notice and to any special conditions imposed by our principal.

17-1436-06/18

# Warehouse/Light Industrial for Lease

233 Michelle Court, South San Francisco



Jay Leslie Senior Managing Director 650.358.5273 [jleslie@newmarkccarey.com](mailto:jleslie@newmarkccarey.com) CA RE License #01244555

**Newmark  
Knight Frank**

2950 South Delaware Street, Suite 125, San Mateo, CA 94403

[www.ngkf.com](http://www.ngkf.com)

Procuring broker shall only be entitled to a commission, calculated in accordance with the rates approved by our principal only if such procuring broker executes a brokerage agreement acceptable to us and our principal and the conditions as set forth in the brokerage agreement are fully and unconditionally satisfied. Although all information furnished regarding property for sale, rental, or financing is from sources deemed reliable, such information has not been verified and no express representation is made nor is any to be implied as to the accuracy thereof and it is submitted subject to errors, omissions, change of price, rental or other conditions, prior sale, lease or financing, or withdrawal without notice and to any special conditions imposed by our principal.

17-1436\*06/18