



OFFICE BUILDING FOR LEASE

WINDWOOD CENTRE

780 LYNNHAVEN PARKWAY, VIRGINIA BEACH, VA 23452



WINDWOOD CENTRE

780 LYNNHAVEN PARKWAY, VIRGINIA BEACH, VA 23452

PROPERTY OVERVIEW



OFFERING SUMMARY

Available SF: 1,577 - 6,025 SF
Lease Rate: \$19.50 SF/yr (Full Service)
Building Size: 79,000 SF

AVAILABLE SPACES

	SF
Suite 101	6,025 SF
Suite 120	1,577 SF
Suite 250	2,075 SF
Suite 300	2,071 SF
Suite 330	3,319 SF
Suite 360	1,725 SF
Suite 410	2,253 SF

PROPERTY OVERVIEW

79,000 RSF, four story, Class A, Brick and Glass office building located in the heart of the Lynnhaven Submarket

PROPERTY HIGHLIGHTS

- Heart of Lynnhaven Submarket across from Lynnhaven Mall
- Easy access to I-264 and the municipal center
- Close proximity to Oceana Master Jet Base
- Multiple dining & shopping options in the area
- Building Conference Room
- Workout Facility with Sauna & Locker Room

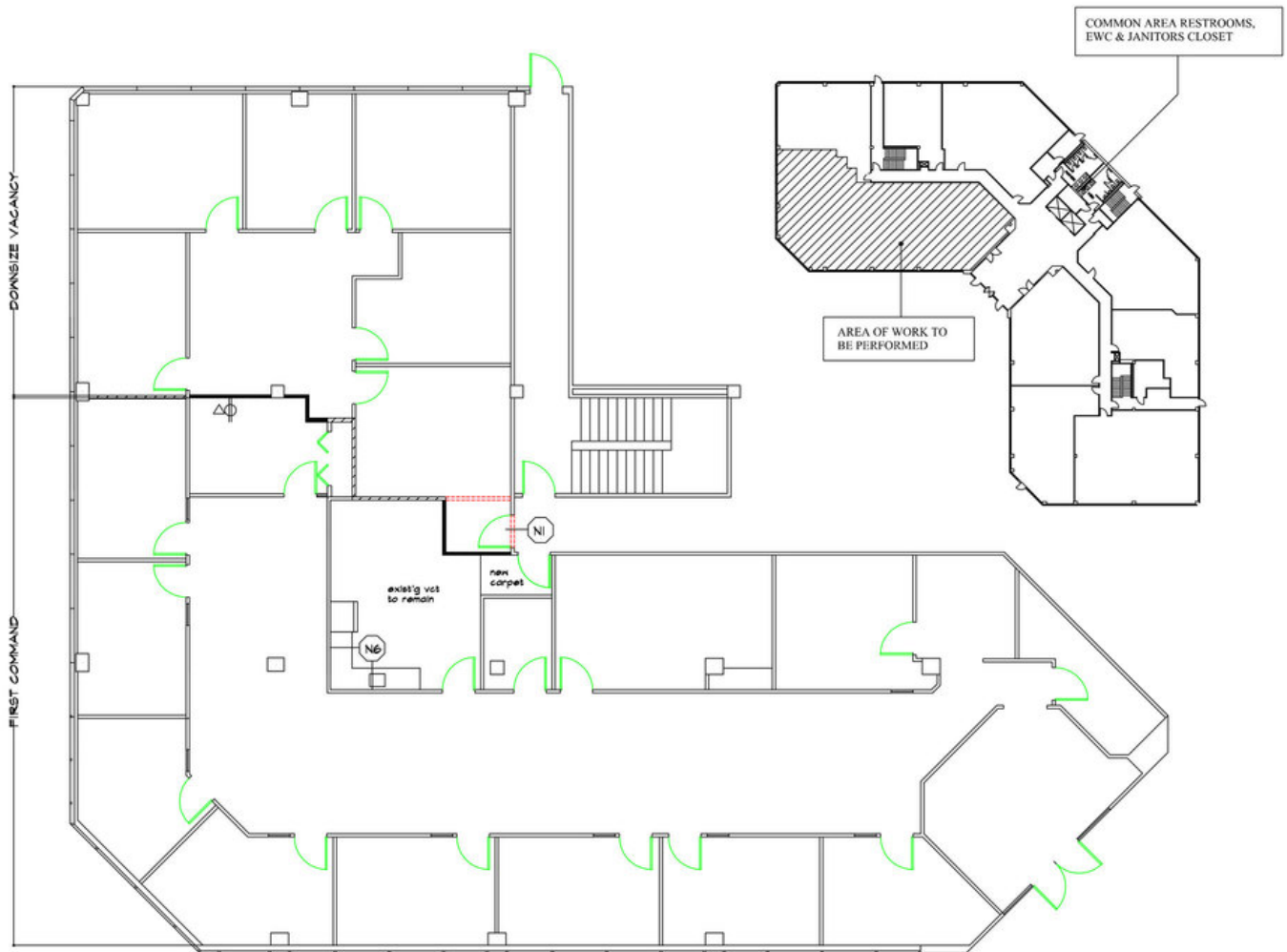
DEMOGRAPHICS

	1 Mile	3 Miles	5 Miles
Total Households:	1,832	31,992	83,090
Total Population:	5,687	86,997	222,438
Average HH Income:	\$63,934	\$66,810	\$73,231

WINDWOOD CENTRE

780 LYNNHAVEN PARKWAY, VIRGINIA BEACH, VA 23452

SUITE 101

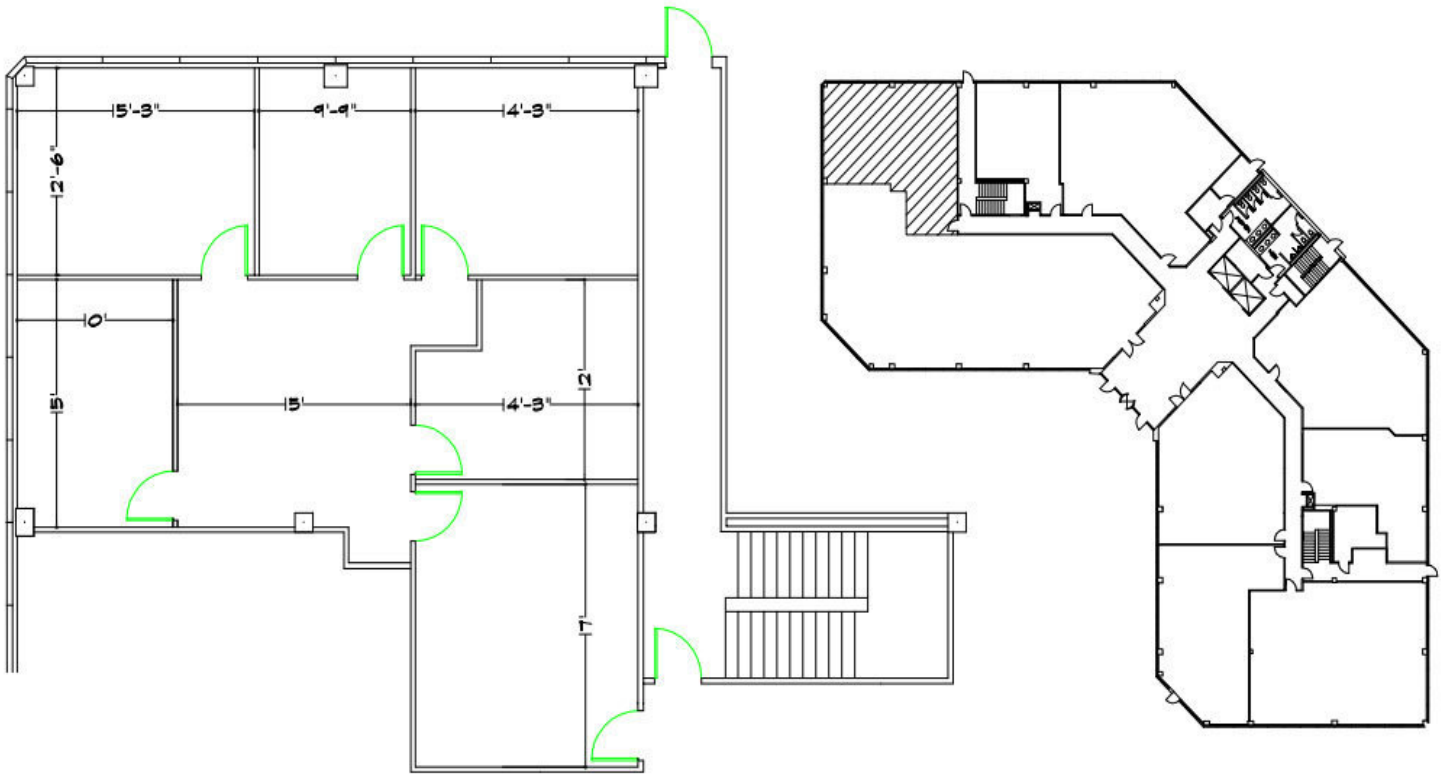


101 SUITE 101
6,025 Rentable Square Feet

WINDWOOD CENTRE

780 LYNNHAVEN PARKWAY, VIRGINIA BEACH, VA 23452

SUITE 120

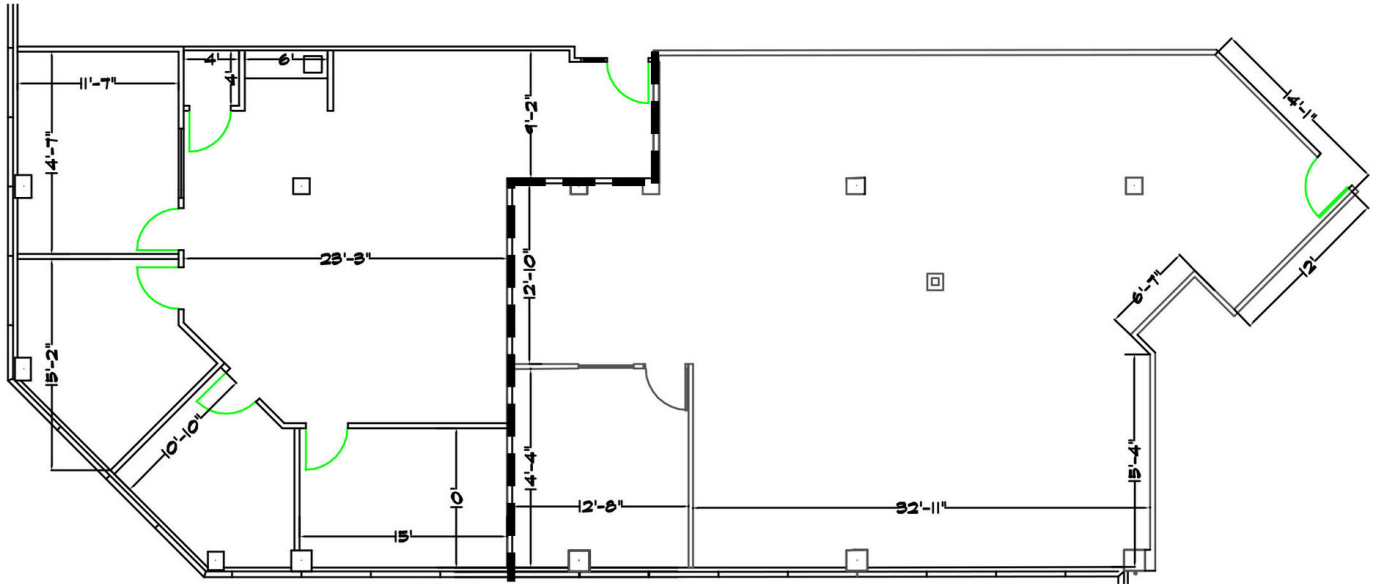


120 SUITE 120 (SUBDIVISIBLE)
1,577 Rentable Square Feet

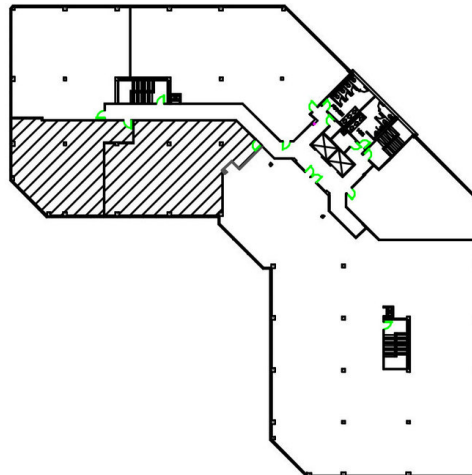
WINDWOOD CENTRE

780 LYNNHAVEN PARKWAY, VIRGINIA BEACH, VA 23452

SUITE 250



KEY PLAN

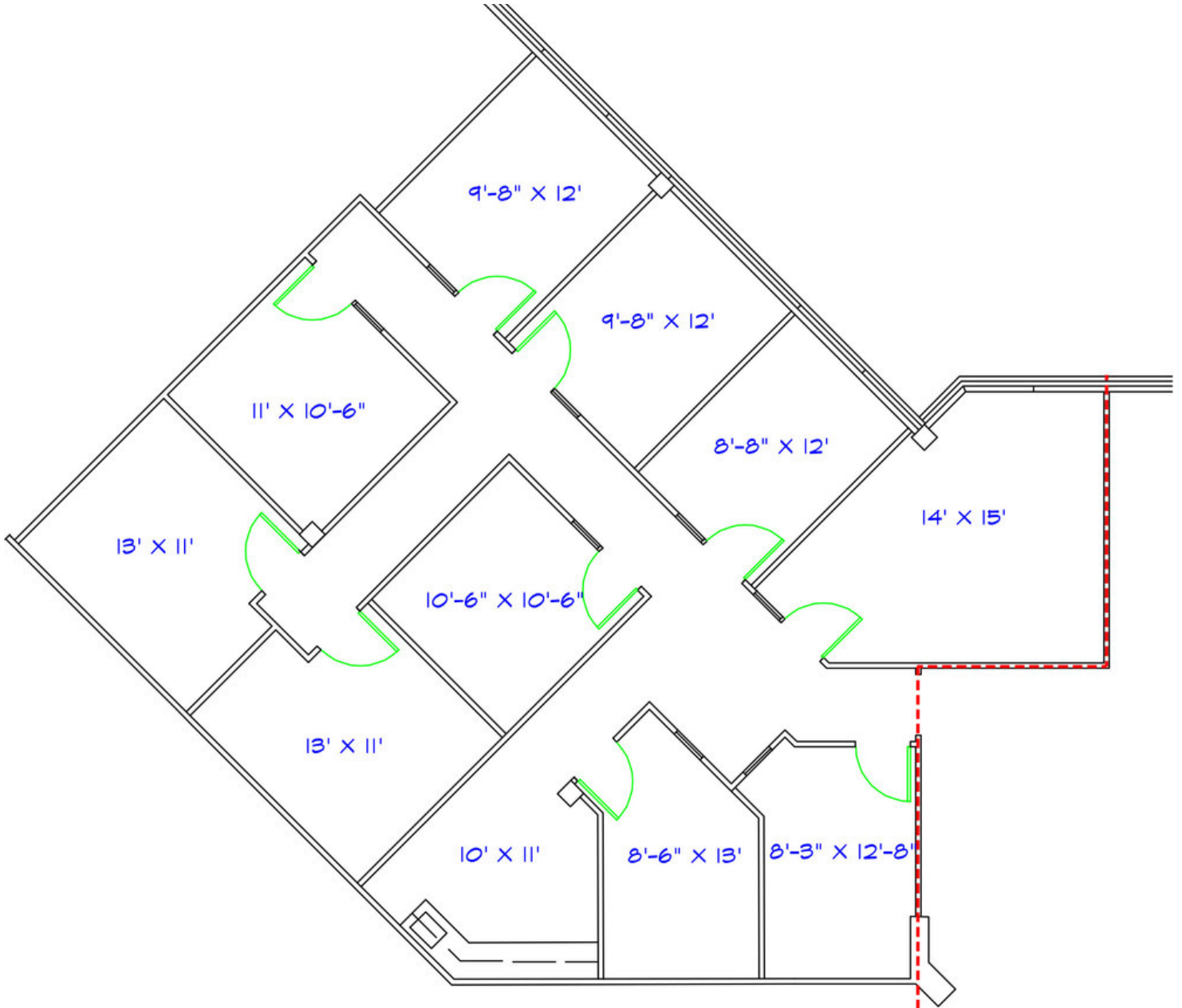


250 SUITE 250
2,075 Rentable Square Feet (Subdivisible)

WINDWOOD CENTRE

780 LYNNHAVEN PARKWAY, VIRGINIA BEACH, VA 23452

SUITE 300

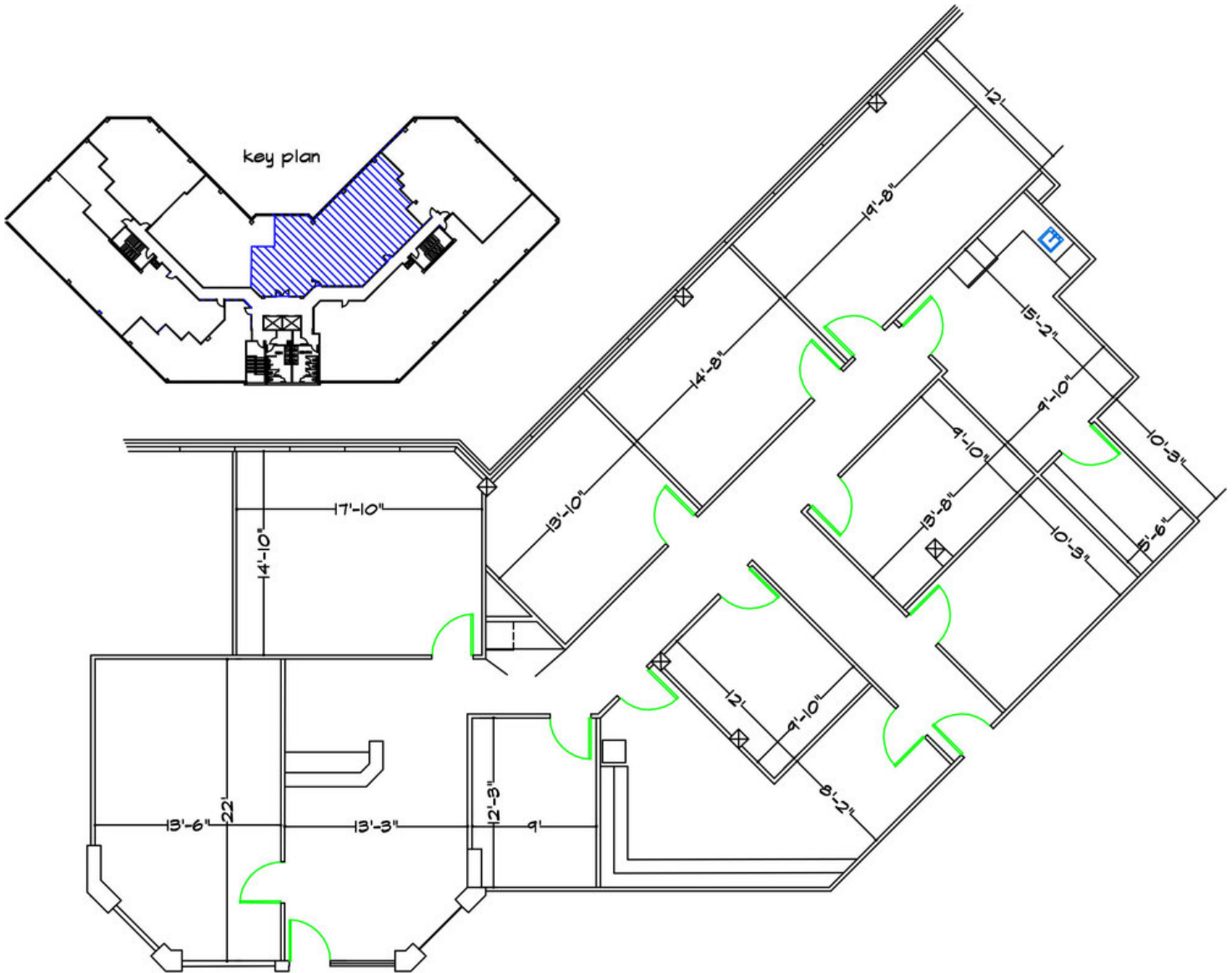


300 SUITE 300
2,071 Rentable Square Feet

WINDWOOD CENTRE

780 LYNNHAVEN PARKWAY, VIRGINIA BEACH, VA 23452

SUITE 330

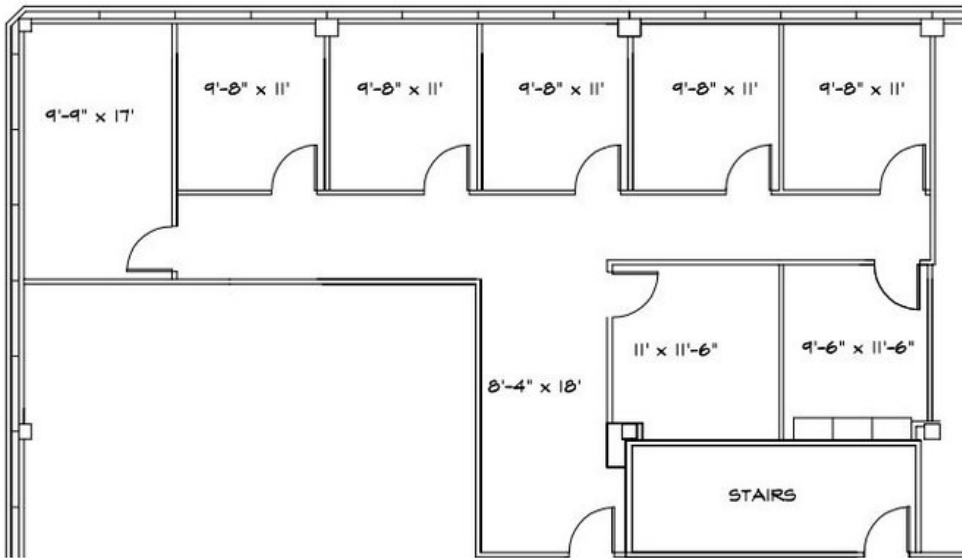


330 SUITE 330
3,319 Rentable Square Feet

WINDWOOD CENTRE

780 LYNNHAVEN PARKWAY, VIRGINIA BEACH, VA 23452

SUITE 360



KEY PLAN



360 SUITE 360
1,725 Rentable Square Feet

WINDWOOD CENTRE

780 LYNNHAVEN PARKWAY, VIRGINIA BEACH, VA 23452

SUITE 410



410 SUITE 410
2,253 Rentable Square Feet

WINDWOOD CENTRE

780 LYNNHAVEN PARKWAY, VIRGINIA BEACH, VA 23452

ADDITIONAL PHOTOS





Vivian L. Turok
 Senior Vice President
 757.497.2113
 Vturok@divaris.com

Elizabeth C. Paasch
 Assistant Vice President
 757.333.4322
 Epaasch@divaris.com



The information contained herein should be considered confidential and remains the sole property of Divaris Real Estate, Inc. at all times. Although every effort has been made to ensure accuracy, no liability will be accepted for any errors or omissions. Disclosure of any information contained herein is prohibited except with the express written permission of Divaris Real Estate, Inc.