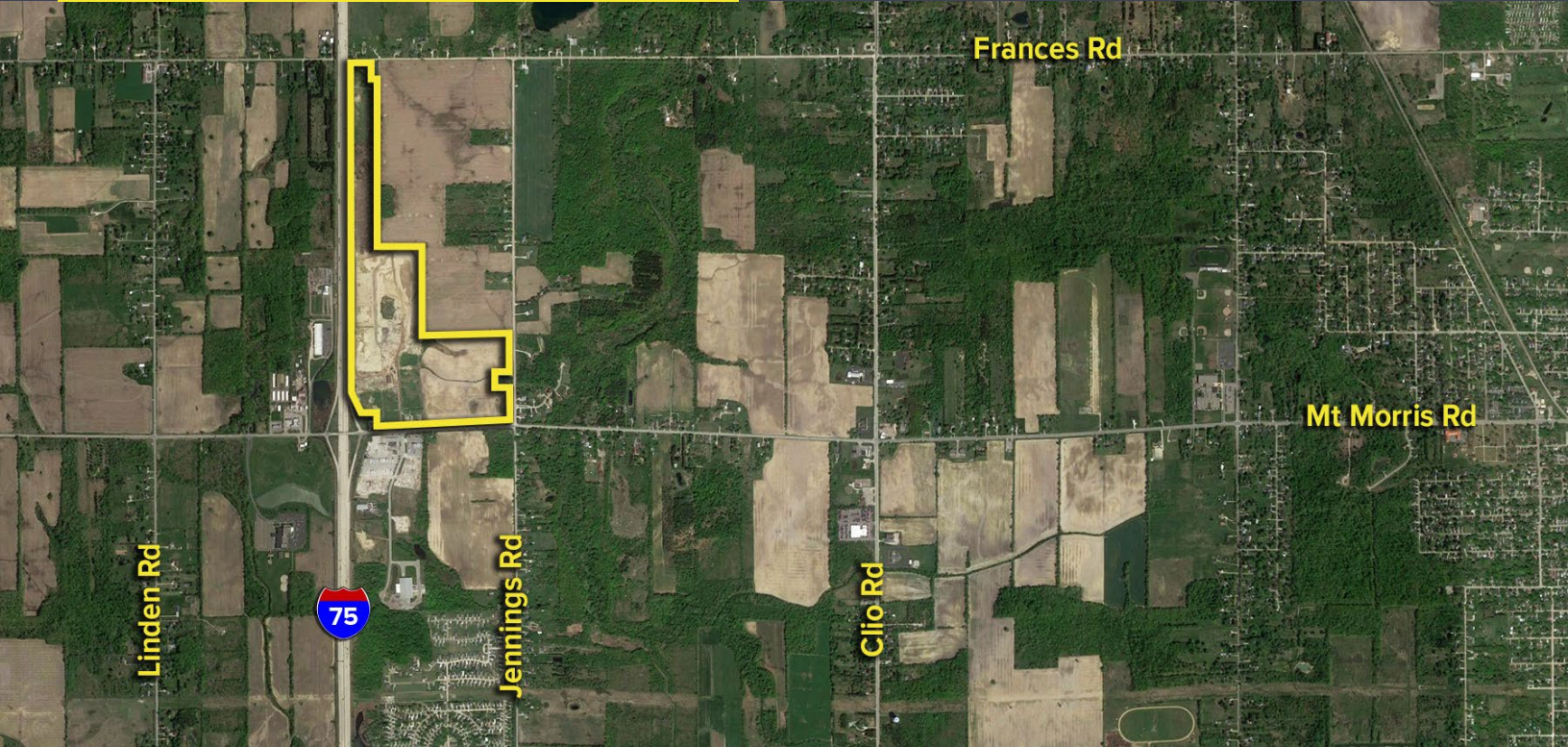


4012 & 4144 W. MT. MORRIS
 MT. MORRIS, MICHIGAN

VACANT LAND FOR SALE
 116.56 Acres Available

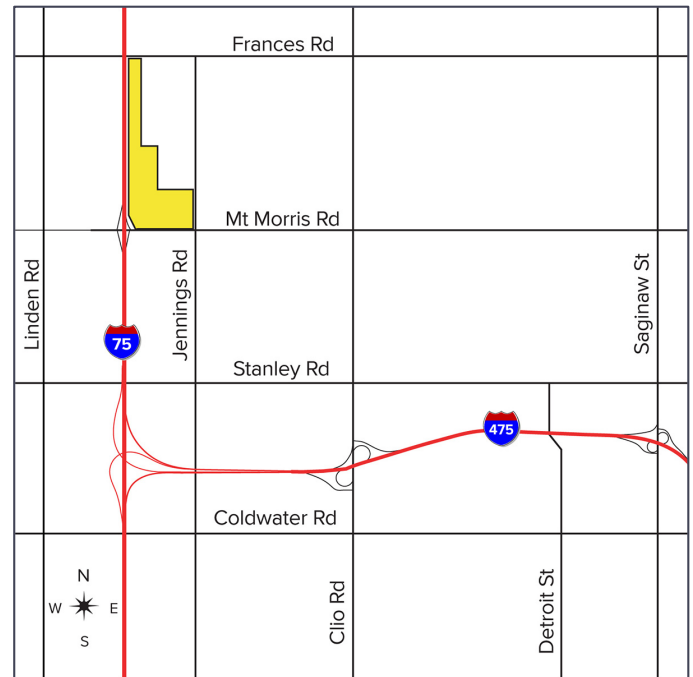


SIGNATURE ASSOCIATES
 KNOW SIGNATURE | KNOW RESULTS



PROPERTY FEATURES

- 116.56 acres available
- Zoned C-2 at 4012 Mt. Morris and C-3 at 4144 Mt. Morris
- 12-inch sewer main south of Mt. Morris Road with city water available at the site
- Adjacent parcels M1, C2, and M1 on the south side of Mt. Morris
- Sale price: \$1,995,000 (\$17,115.65/acre)



For more information, please contact:

GARY STEPHENS
 (248) 948 0104
 gstephens@signatureassociates.com

STEVE GORDON
 (248) 948 0101
 sgordon@signatureassociates.com

SIGNATURE ASSOCIATES
 One Towne Square, Suite 1200
 Southfield, MI 48076
 www.signatureassociates.com