

EDEN PLAZA

HAYWARD, CA



Highlights

- › 7 Building Office/R&D/Industrial Park
- › Total Project Size; ±110,997 Sq. Ft.
- › Wide Variety of Suite Sizes and Configurations
- › On-Site Deli; Eden Plaza Café
- › First Exit Off the San Mateo Bridge
- › 11 Miles to Foster City
- › 12 Miles to Oakland International Airport
- › 18 Miles to San Francisco International Airport

For more information, contact:

JOHN MCLELLAN
+1 650 486 2223
john.mclellan@colliers.com
CA License No. 01869489

CHRIS SCHOFIELD, SIOR
+1 510 903 7608
cschofield@lee-associates.com
CA License No. 01326198

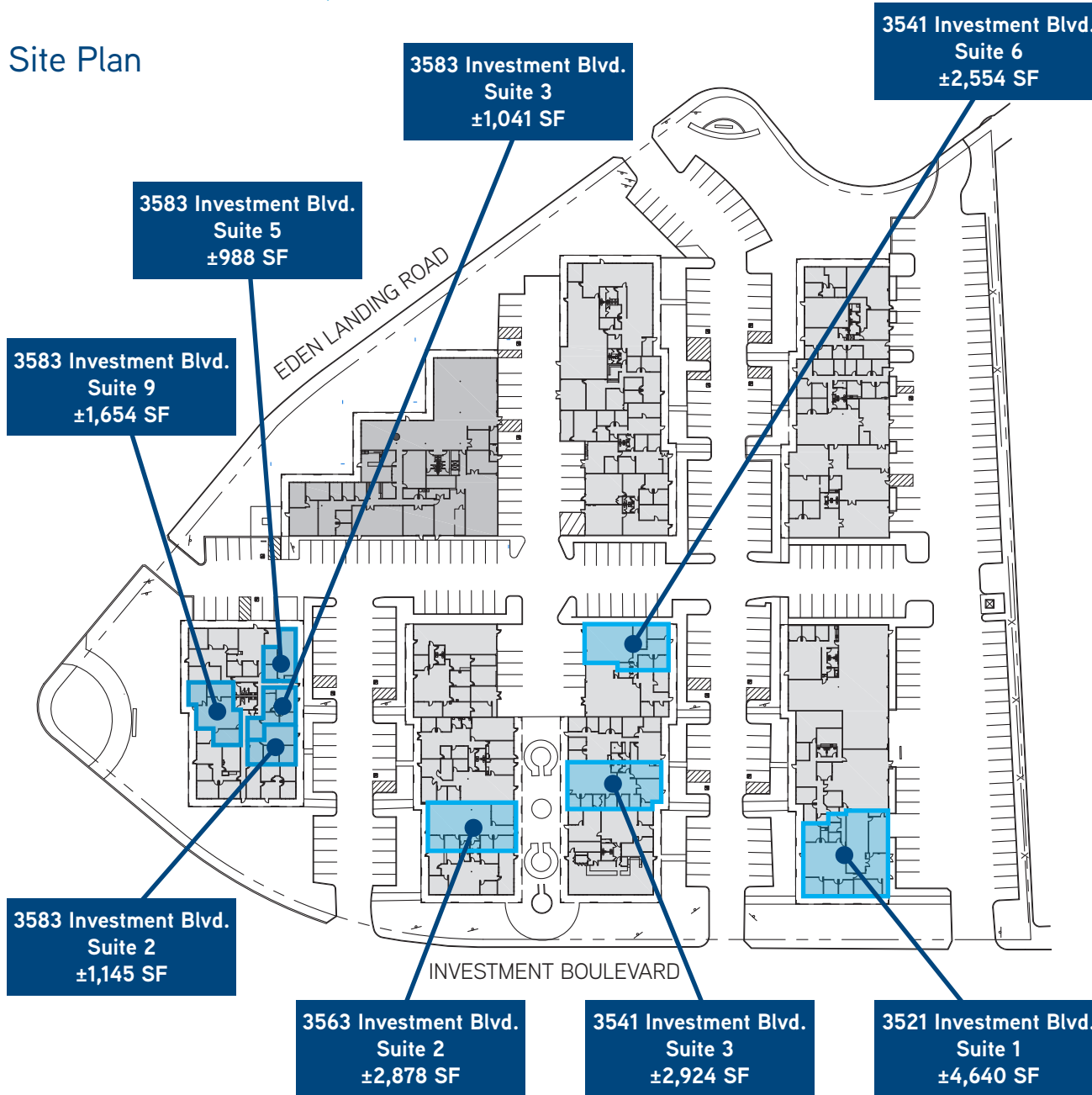
NEW OWNERSHIP



7 Building Office / R&D / Industrial Park

TOTAL PROJECT SIZE ±110,997 SQ FT

Site Plan



Drawings Not Exact, Not to Scale.

The information furnished has been obtained from sources we deem reliable and is submitted subject to errors, omissions and changes. Although Colliers International has no reason to doubt its accuracy, we do not guarantee it. All information should be verified by the recipient prior to lease, purchase, exchange, or execution of legal documents. © 2017 Colliers International



JOHN MCLELLAN

+1 650 486 2223

john.mclellan@colliers.com

CA License No. 01869489

CHRIS SCHOFIELD, SIOR

+1 510 903 7608

cschofield@lee-associates.com

CA License No. 01326198

COLLIERS INTERNATIONAL

San Francisco Peninsula

203 Redwood Shores Parkway, Suite 125

Redwood City, CA 94065

Main: +1 650 486 2200

colliers.com/redwoodcity

7 Building Office / R&D / Industrial Park

TOTAL PROJECT SIZE ±110,997 SQ FT

Property Aerial



JOHN MCLELLAN

+1 650 486 2223

john.mclellan@colliers.com

CA License No. 01869489

CHRIS SCHOFIELD, SIOR

+1 510 903 7608

cschofield@lee-associates.com

CA License No. 01326198

COLLIERS INTERNATIONAL

San Francisco Peninsula

203 Redwood Shores Parkway, Suite 125

Redwood City, CA 94065

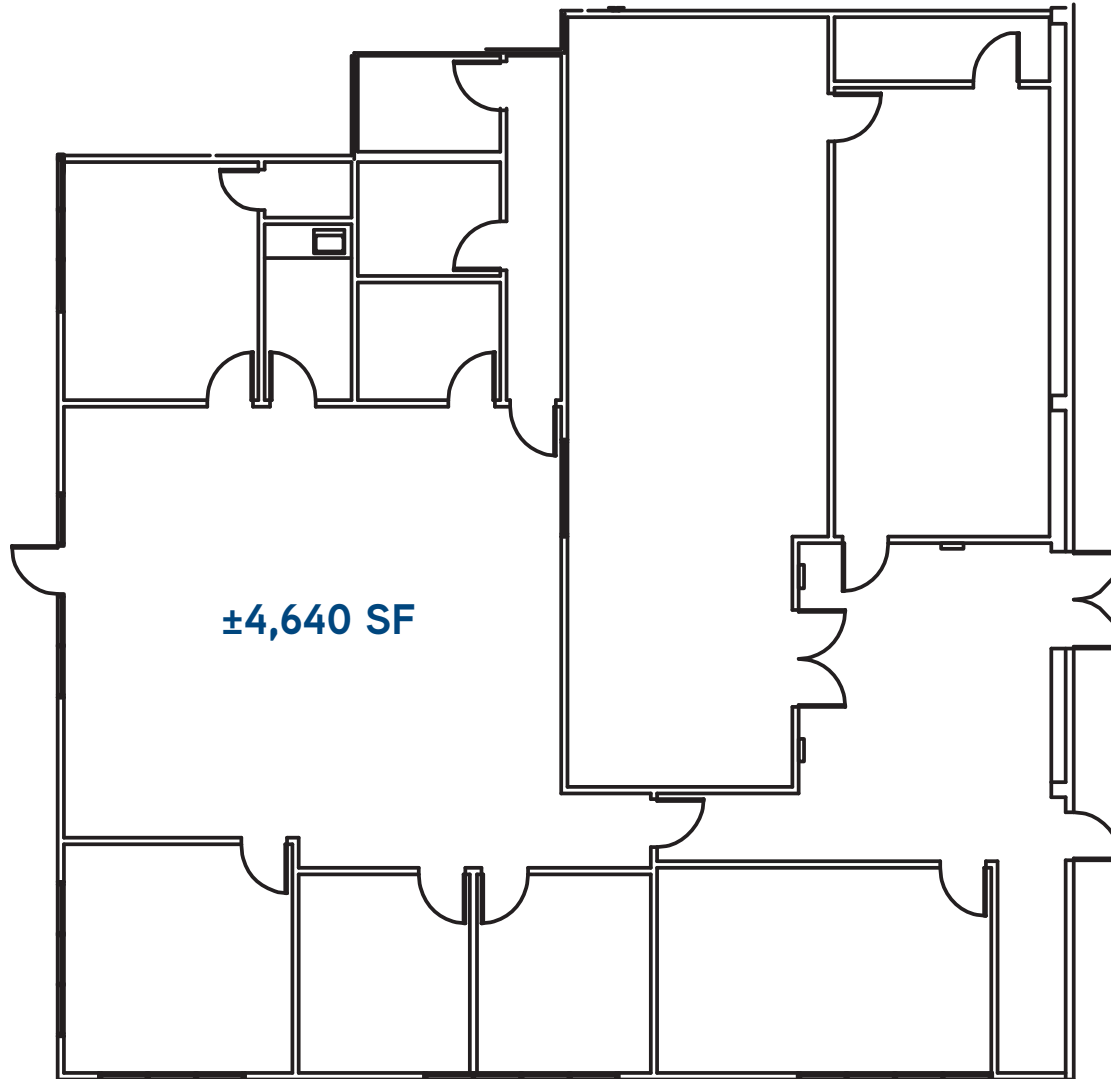
Main: +1 650 486 2200

colliers.com/redwoodcity

7 Building Office / R&D / Industrial Park

TOTAL PROJECT SIZE ±110,997 SQ FT

Floor Plan > 3521 Investment Boulevard, Suite 1



Drawings Not Exact, Not to Scale.

The information furnished has been obtained from sources we deem reliable and is submitted subject to errors, omissions and changes. Although Colliers International has no reason to doubt its accuracy, we do not guarantee it. All information should be verified by the recipient prior to lease, purchase, exchange, or execution of legal documents. © 2017 Colliers International



JOHN MCLELLAN
+1 650 486 2223
john.mclellan@colliers.com
CA License No. 01869489

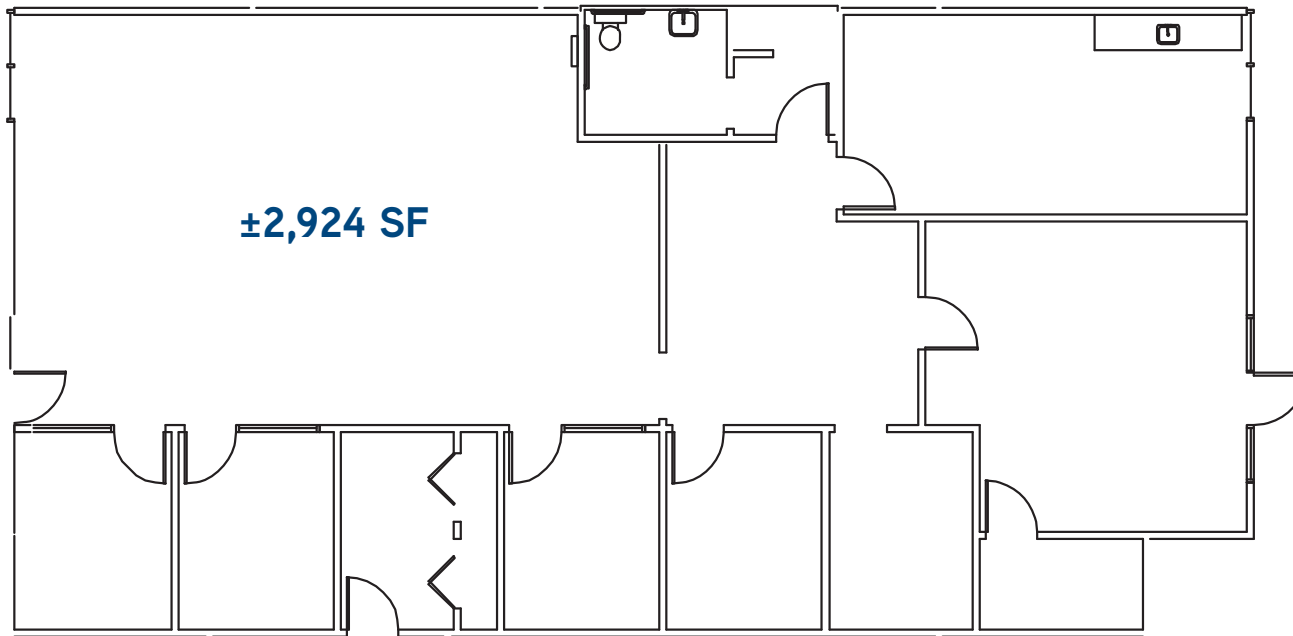
CHRIS SCHOFIELD, SIOR
+1 510 903 7608
cschofield@lee-associates.com
CA License No. 01326198

COLLIERS INTERNATIONAL
San Francisco Peninsula
203 Redwood Shores Parkway, Suite 125
Redwood City, CA 94065
Main: +1 650 486 2200
colliers.com/redwoodcity

7 Building Office / R&D / Industrial Park

TOTAL PROJECT SIZE ±110,997 SQ FT

Floor Plan > 3541 Investment Boulevard, Suite 3



Drawings Not Exact, Not to Scale.

The information furnished has been obtained from sources we deem reliable and is submitted subject to errors, omissions and changes. Although Colliers International has no reason to doubt its accuracy, we do not guarantee it. All information should be verified by the recipient prior to lease, purchase, exchange, or execution of legal documents. © 2017 Colliers International



JOHN MCLELLAN
+1 650 486 2223
john.mclellan@colliers.com
CA License No. 01869489

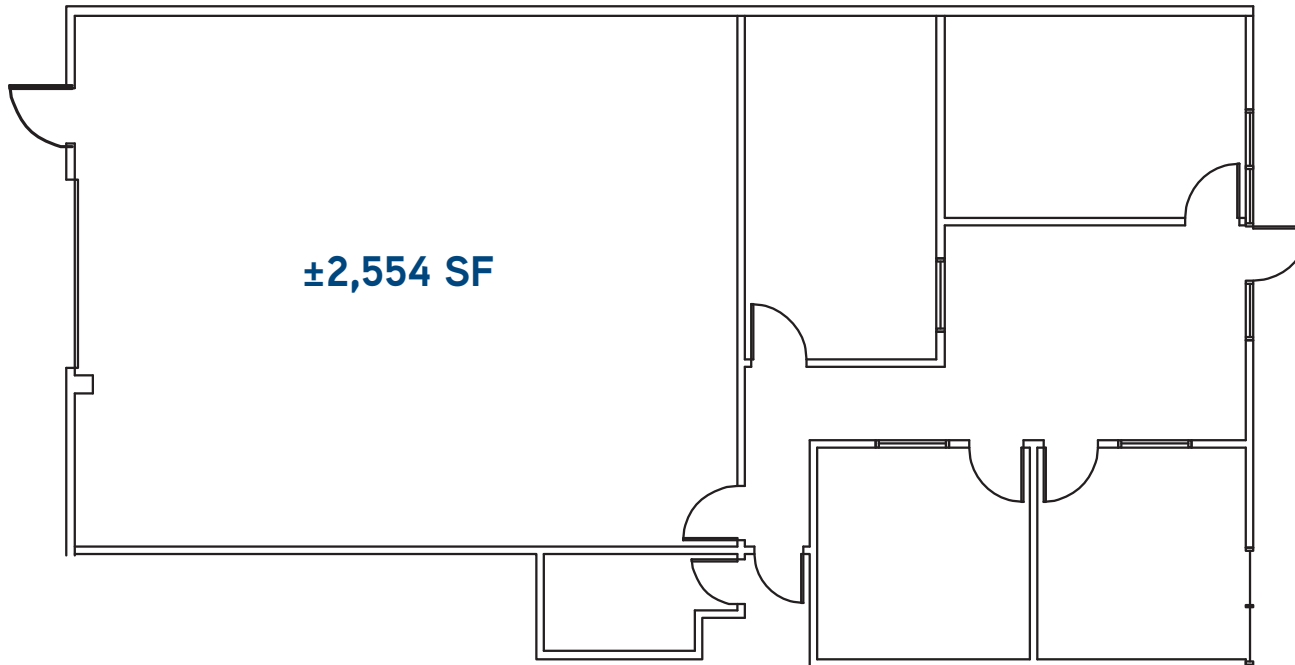
CHRIS SCHOFIELD, SIOR
+1 510 903 7608
cschofield@lee-associates.com
CA License No. 01326198

COLLIERS INTERNATIONAL
San Francisco Peninsula
203 Redwood Shores Parkway, Suite 125
Redwood City, CA 94065
Main: +1 650 486 2200
colliers.com/redwoodcity

7 Building Office / R&D / Industrial Park

TOTAL PROJECT SIZE ±110,997 SQ FT

Floor Plan > 3541 Investment Boulevard, Suite 6



Drawings Not Exact, Not to Scale.

The information furnished has been obtained from sources we deem reliable and is submitted subject to errors, omissions and changes. Although Colliers International has no reason to doubt its accuracy, we do not guarantee it. All information should be verified by the recipient prior to lease, purchase, exchange, or execution of legal documents. © 2017 Colliers International



JOHN MCLELLAN

+1 650 486 2223

john.mclellan@colliers.com

CA License No. 01869489

CHRIS SCHOFIELD, SIOR

+1 510 903 7608

cschofield@lee-associates.com

CA License No. 01326198

COLLIERS INTERNATIONAL

San Francisco Peninsula

203 Redwood Shores Parkway, Suite 125

Redwood City, CA 94065

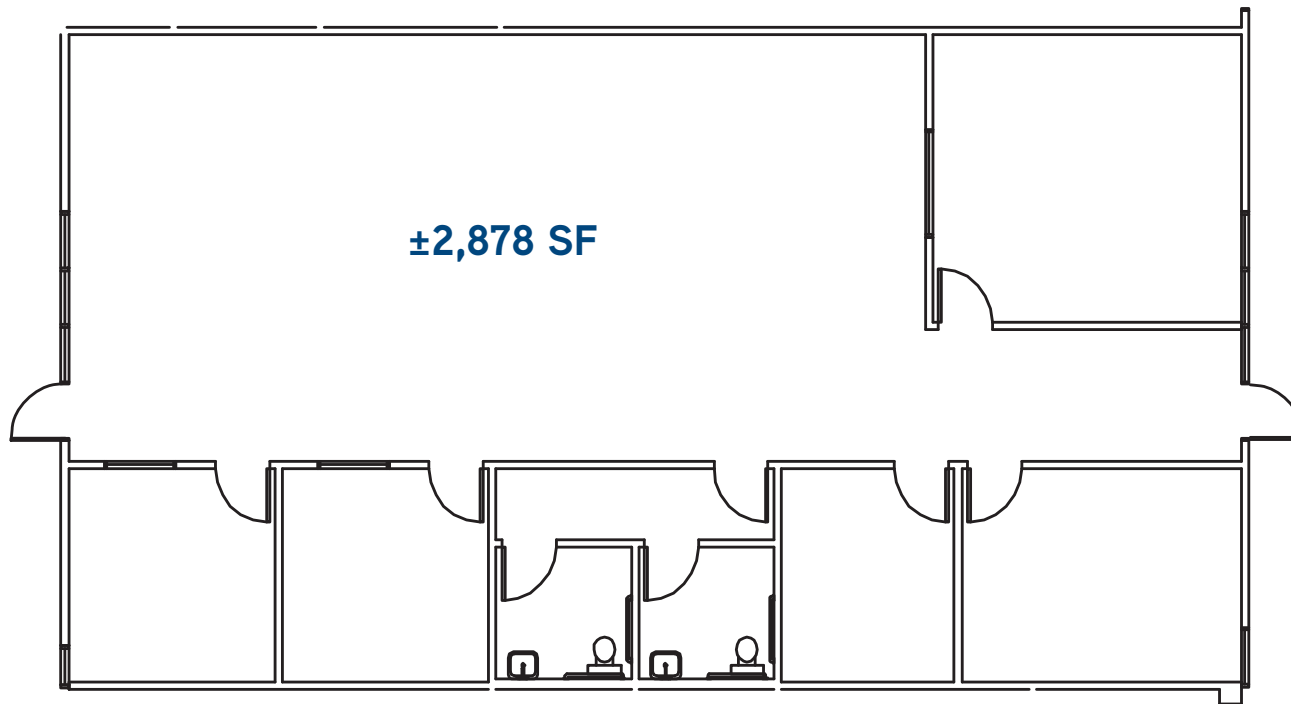
Main: +1 650 486 2200

colliers.com/redwoodcity

7 Building Office / R&D / Industrial Park

TOTAL PROJECT SIZE ±110,997 SQ FT

Floor Plan > 3563 Investment Boulevard, Suite 2



Drawings Not Exact, Not to Scale.

The information furnished has been obtained from sources we deem reliable and is submitted subject to errors, omissions and changes. Although Colliers International has no reason to doubt its accuracy, we do not guarantee it. All information should be verified by the recipient prior to lease, purchase, exchange, or execution of legal documents. © 2017 Colliers International



JOHN MCLELLAN

+1 650 486 2223

john.mclellan@colliers.com

CA License No. 01869489

CHRIS SCHOFIELD, SIOR

+1 510 903 7608

cschofield@lee-associates.com

CA License No. 01326198

COLLIERS INTERNATIONAL

San Francisco Peninsula

203 Redwood Shores Parkway, Suite 125

Redwood City, CA 94065

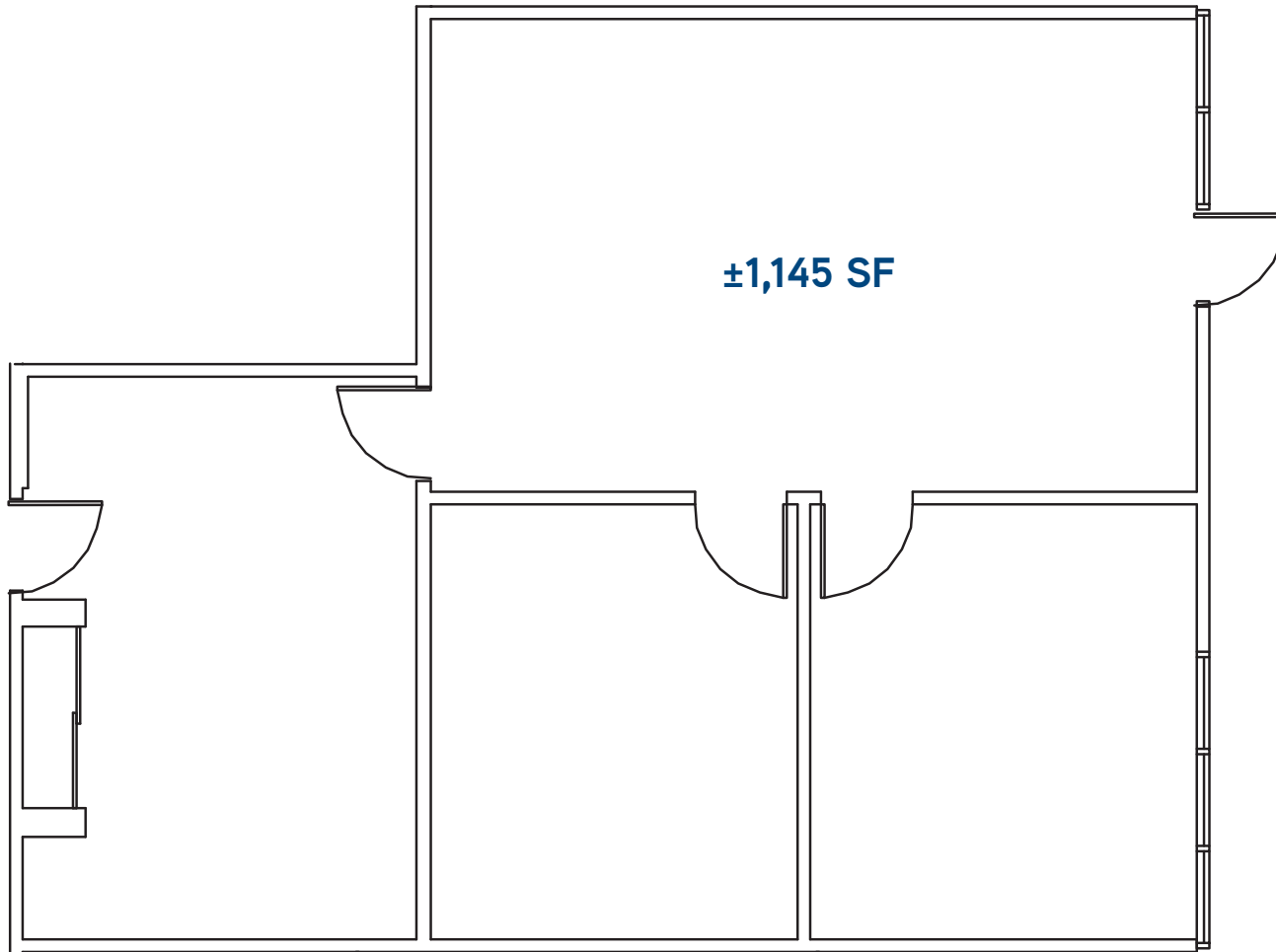
Main: +1 650 486 2200

colliers.com/redwoodcity

7 Building Office / R&D / Industrial Park

TOTAL PROJECT SIZE ±110,997 SQ FT

Floor Plan > 3583 Investment Boulevard, Suite 2



Drawings Not Exact, Not to Scale.

The information furnished has been obtained from sources we deem reliable and is submitted subject to errors, omissions and changes. Although Colliers International has no reason to doubt its accuracy, we do not guarantee it. All information should be verified by the recipient prior to lease, purchase, exchange, or execution of legal documents. © 2017 Colliers International



JOHN MCLELLAN

+1 650 486 2223

john.mclellan@colliers.com

CA License No. 01869489

CHRIS SCHOFIELD, SIOR

+1 510 903 7608

cschofield@lee-associates.com

CA License No. 01326198

COLLIERS INTERNATIONAL

San Francisco Peninsula

203 Redwood Shores Parkway, Suite 125

Redwood City, CA 94065

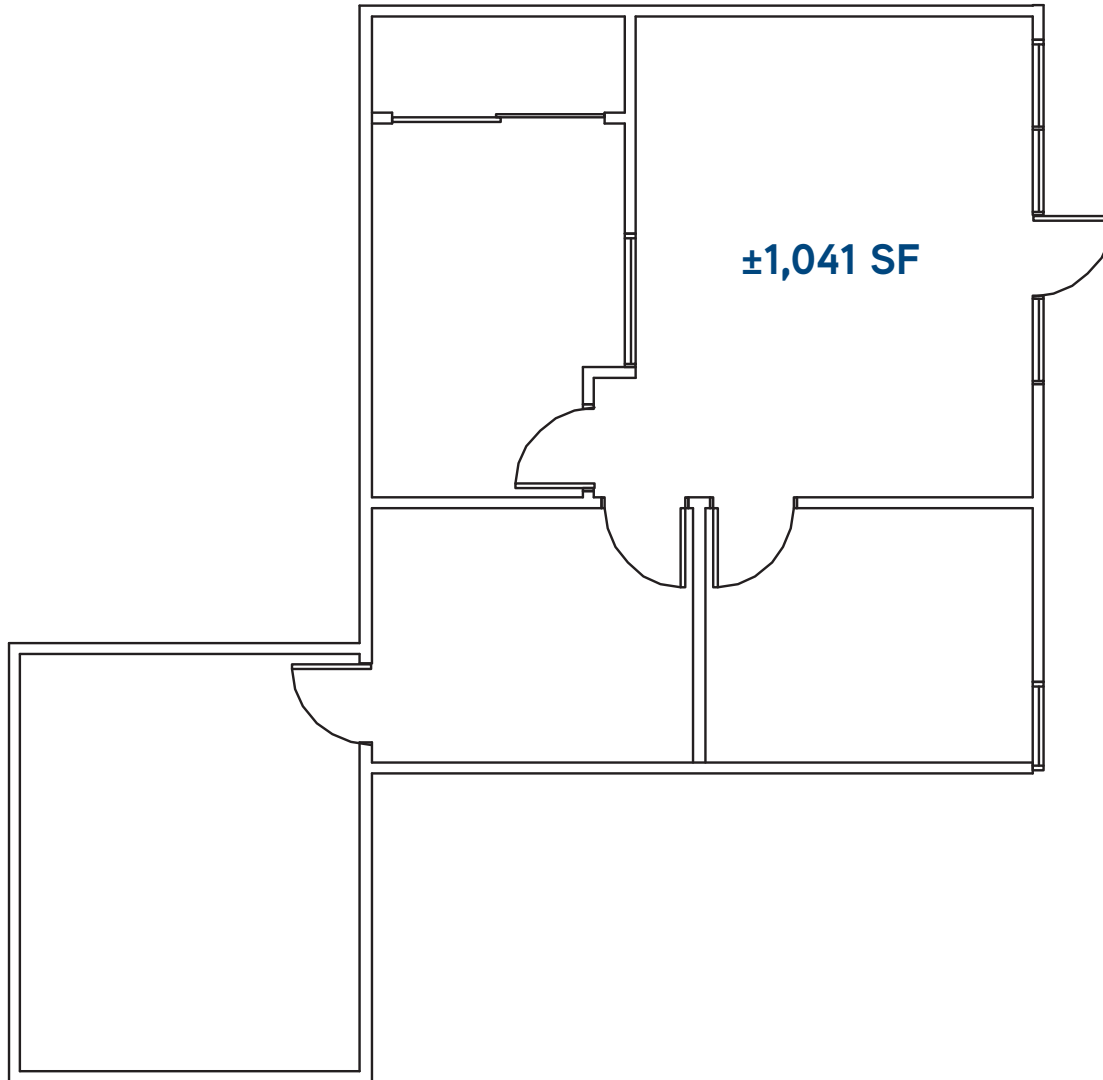
Main: +1 650 486 2200

colliers.com/redwoodcity

7 Building Office / R&D / Industrial Park

TOTAL PROJECT SIZE ±110,997 SQ FT

Floor Plan > 3583 Investment Boulevard, Suite 3



Drawings Not Exact, Not to Scale.

The information furnished has been obtained from sources we deem reliable and is submitted subject to errors, omissions and changes. Although Colliers International has no reason to doubt its accuracy, we do not guarantee it. All information should be verified by the recipient prior to lease, purchase, exchange, or execution of legal documents. © 2017 Colliers International



JOHN MCLELLAN
+1 650 486 2223
john.mclellan@colliers.com
CA License No. 01869489

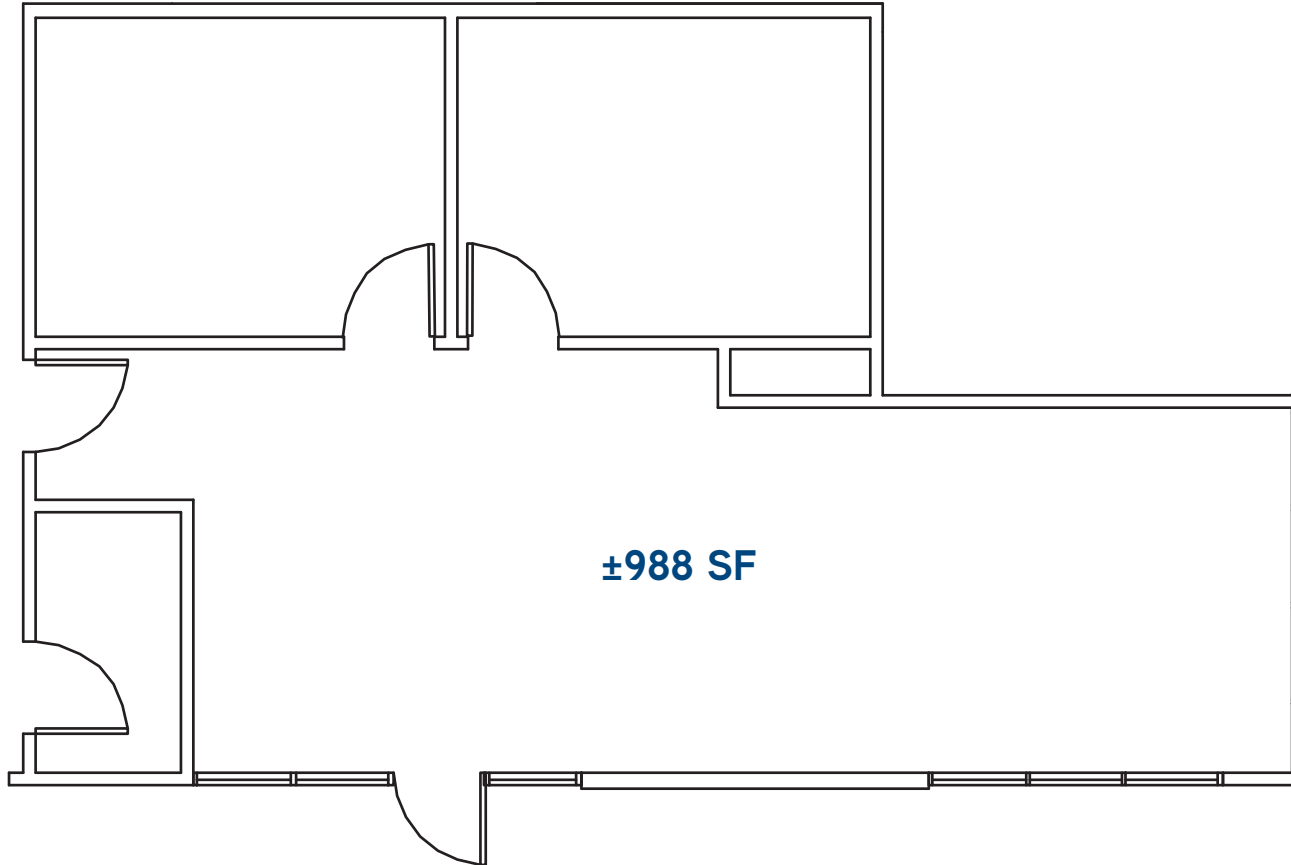
CHRIS SCHOFIELD, SIOR
+1 510 903 7608
cschofield@lee-associates.com
CA License No. 01326198

COLLIERS INTERNATIONAL
San Francisco Peninsula
203 Redwood Shores Parkway, Suite 125
Redwood City, CA 94065
Main: +1 650 486 2200
colliers.com/redwoodcity

7 Building Office / R&D / Industrial Park

TOTAL PROJECT SIZE ±110,997 SQ FT

Floor Plan > 3583 Investment Boulevard, Suite 5



Drawings Not Exact, Not to Scale.

The information furnished has been obtained from sources we deem reliable and is submitted subject to errors, omissions and changes. Although Colliers International has no reason to doubt its accuracy, we do not guarantee it. All information should be verified by the recipient prior to lease, purchase, exchange, or execution of legal documents. © 2017 Colliers International



JOHN MCLELLAN

+1 650 486 2223

john.mclellan@colliers.com

CA License No. 01869489

CHRIS SCHOFIELD, SIOR

+1 510 903 7608

cschofield@lee-associates.com

CA License No. 01326198

COLLIERS INTERNATIONAL

San Francisco Peninsula

203 Redwood Shores Parkway, Suite 125

Redwood City, CA 94065

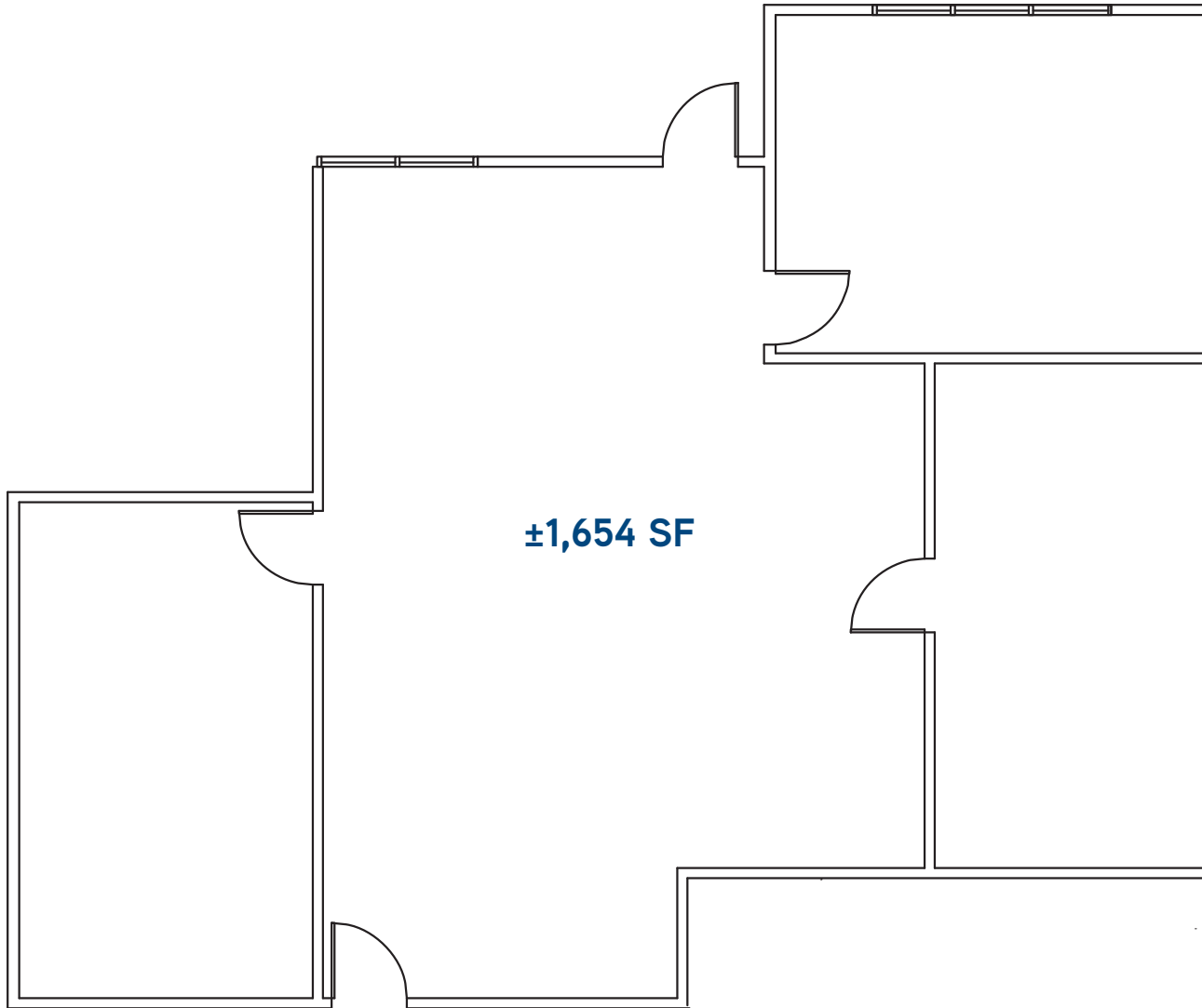
Main: +1 650 486 2200

colliers.com/redwoodcity

7 Building Office / R&D / Industrial Park

TOTAL PROJECT SIZE ±110,997 SQ FT

Floor Plan > 3583 Investment Boulevard, Suite 9



Drawings Not Exact, Not to Scale.

The information furnished has been obtained from sources we deem reliable and is submitted subject to errors, omissions and changes. Although Colliers International has no reason to doubt its accuracy, we do not guarantee it. All information should be verified by the recipient prior to lease, purchase, exchange, or execution of legal documents. © 2017 Colliers International



JOHN MCLELLAN
+1 650 486 2223
john.mclellan@colliers.com
CA License No. 01869489

CHRIS SCHOFIELD, SIOR
+1 510 903 7608
cschofield@lee-associates.com
CA License No. 01326198

COLLIERS INTERNATIONAL
San Francisco Peninsula
203 Redwood Shores Parkway, Suite 125
Redwood City, CA 94065
Main: +1 650 486 2200
colliers.com/redwoodcity

7 Building Office / R&D / Industrial Park

TOTAL PROJECT SIZE ±110,997 SQ FT

Property Photographs



JOHN MCLELLAN

+1 650 486 2223

john.mclellan@colliers.com

CA License No. 01869489

CHRIS SCHOFIELD, SIOR

+1 510 903 7608

cschofield@lee-associates.com

CA License No. 01326198

COLLIERS INTERNATIONAL

San Francisco Peninsula

203 Redwood Shores Parkway, Suite 125

Redwood City, CA 94065

Main: +1 650 486 2200

colliers.com/redwoodcity