

Bayport North Logistics Center I & II

Two State of the Art Industrial Buildings - ±102,863 SF & ±233,190 SF



JASON DILLEE
(713) 345 1432
Jason.Dillee@cushwake.com

ANDREW JEWETT
(713) 345 1433
Andrew.Jewett@cushwake.com

Cushman & Wakefield of Texas, Inc.
1330 Post Oak Boulevard | Suite 2700
Houston, TX 70056

© Cushman & Wakefield, 2018. No warranty or representation, express or implied, is made to the accuracy or completeness of the information contained herein, and same is submitted subject to errors, omissions, change of price, rental or other conditions, withdrawal without notice, and to any special listing conditions imposed by the property owner(s). As applicable, we make no representation as to the condition of the property (or properties) in question.
Cushman & Wakefield of Texas, Inc. – Licensed Real Estate Brokers.

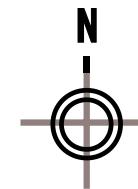
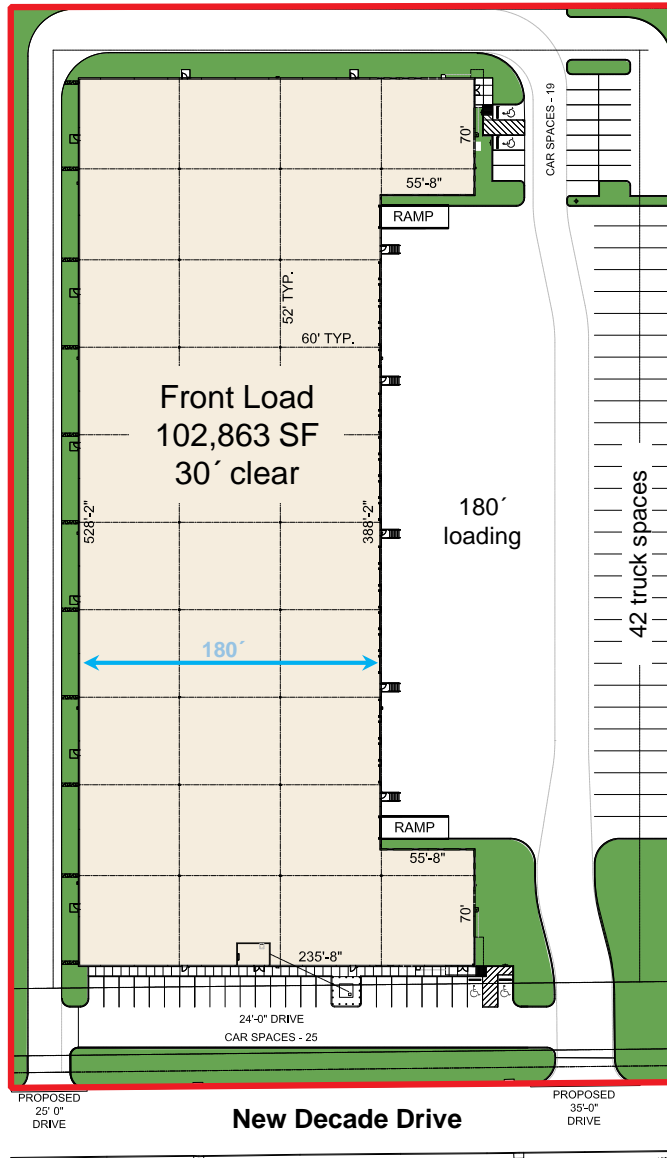
Bayport North Logistics Center I

9701 New Decade Drive - ±102,863 SF Front Load Building



Building Details

- ±102,863 Total SF
- Office built to suit
- Front load configuration
- ±398.6' frontage on New Decade Drive
- 30' clear height
- ESFR sprinkler
- 180' truck court
- 44 parking spaces
- 21 dock doors
- 2 drive-in ramps
- 42 trailer parks
- Located in Bayport Industrial Park
- Minutes from Barbour's Cut and Bayport Container terminals
- Direct access to Fairmont Parkway, Highway 225, Highway 146 and Beltway 8



JASON DILLEE
(713) 345 1432
Jason.Dillee@cushwake.com

ANDREW JEWETT
(713) 345 1433
Andrew.Jewett@cushwake.com

Cushman & Wakefield of Texas, Inc.
1330 Post Oak Boulevard | Suite 2700
Houston, TX 70056

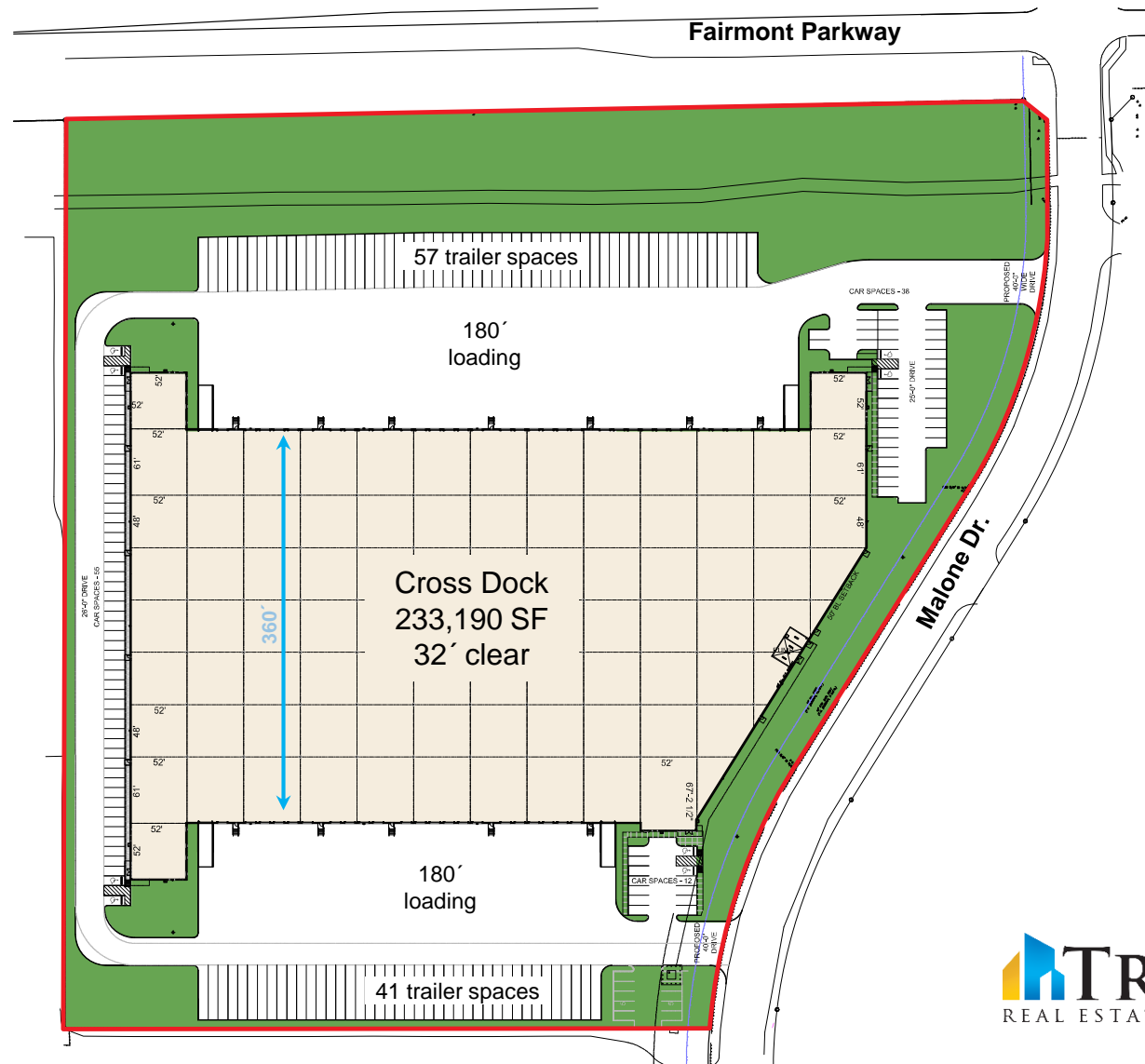
Bayport North Logistics Center II

4100 Malone Drive - ±233,190 SF Cross Dock Building



Building Details

- ±233,190 Total SF
- Office built to suit
- Cross dock configuration
- ±880' frontage on Fairmont Parkway
- 32' clear height
- ESFR sprinkler
- 180' truck courts
- 105 parking spaces
- 55 dock doors
- 4 drive-in ramps
- 98 trailer parks
- Located in Bayport Industrial Park
- Minutes from Barbour's Cut and Bayport Container terminals
- Direct access to Fairmont Parkway, Highway 225, Highway 146 and Beltway 8



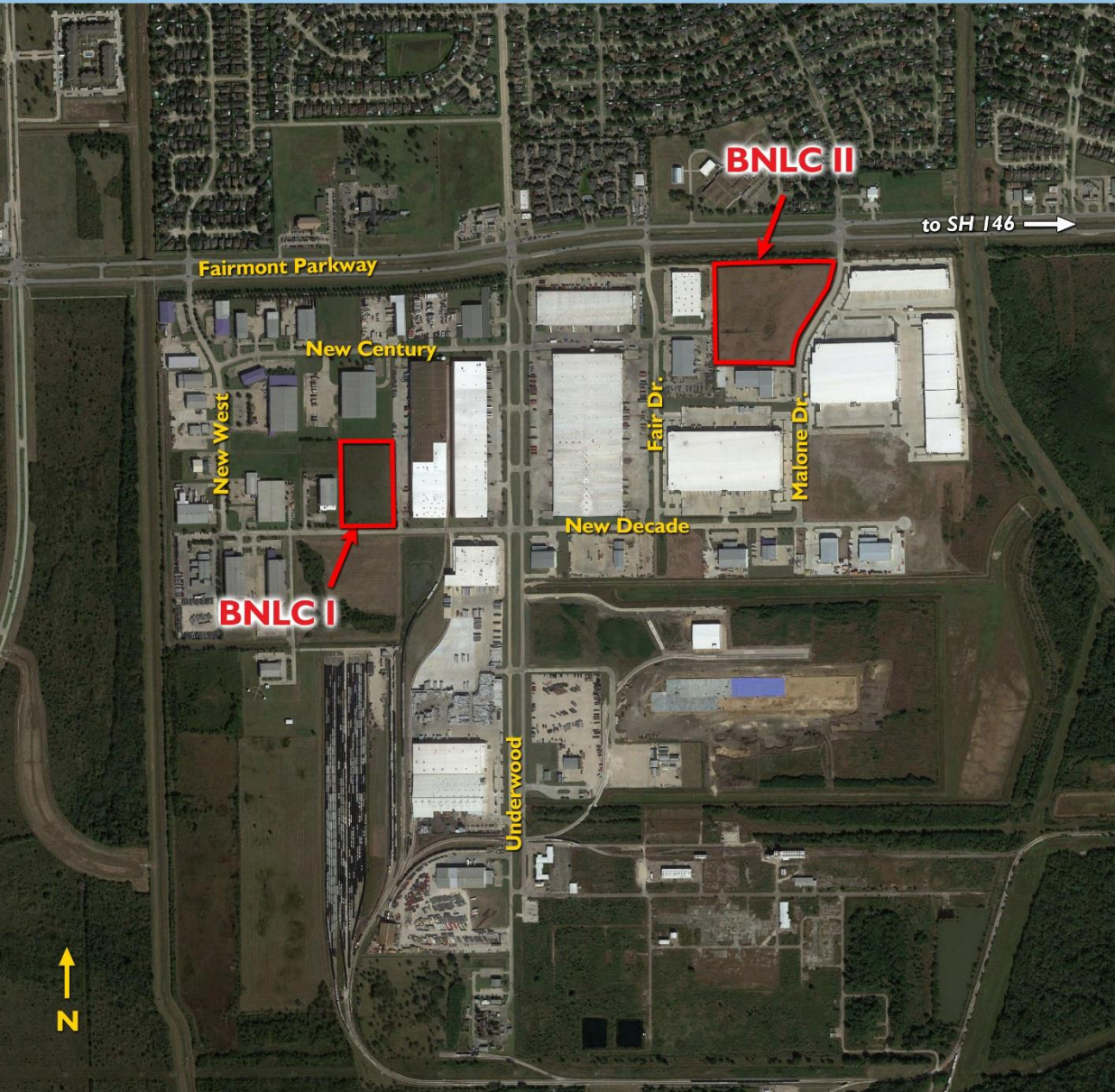
JASON DILLEE
(713) 345 1432
Jason.Dillee@cushwake.com

ANDREW JEWETT
(713) 345 1433
Andrew.Jewett@cushwake.com

Cushman & Wakefield of Texas, Inc.
1330 Post Oak Boulevard | Suite 2700
Houston, TX 70056

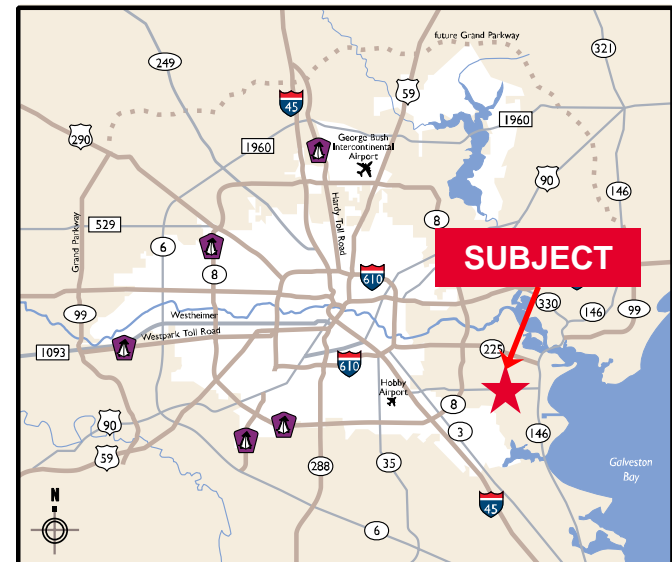
Bayport North Logistics Center I & II

9701 New Decade Drive (A) & 4100 Malone Drive (B), Pasadena, Texas



Bayport North Industrial Park

- Deed restricted site in Bayport Industrial Park
- All city utilities available from the City of LaPorte
- Zoned heavy industrial
- Under construction
- Direct access to Beltway 8 (West), Highway 225 (North) and Highway 146 (East)
- Direct access to Fairmont Parkway
- 2 miles to Highway 225
- 2 miles to Highway 146
- 4 miles to Barbour's Cut
- 5 miles to Bayport Container Terminal



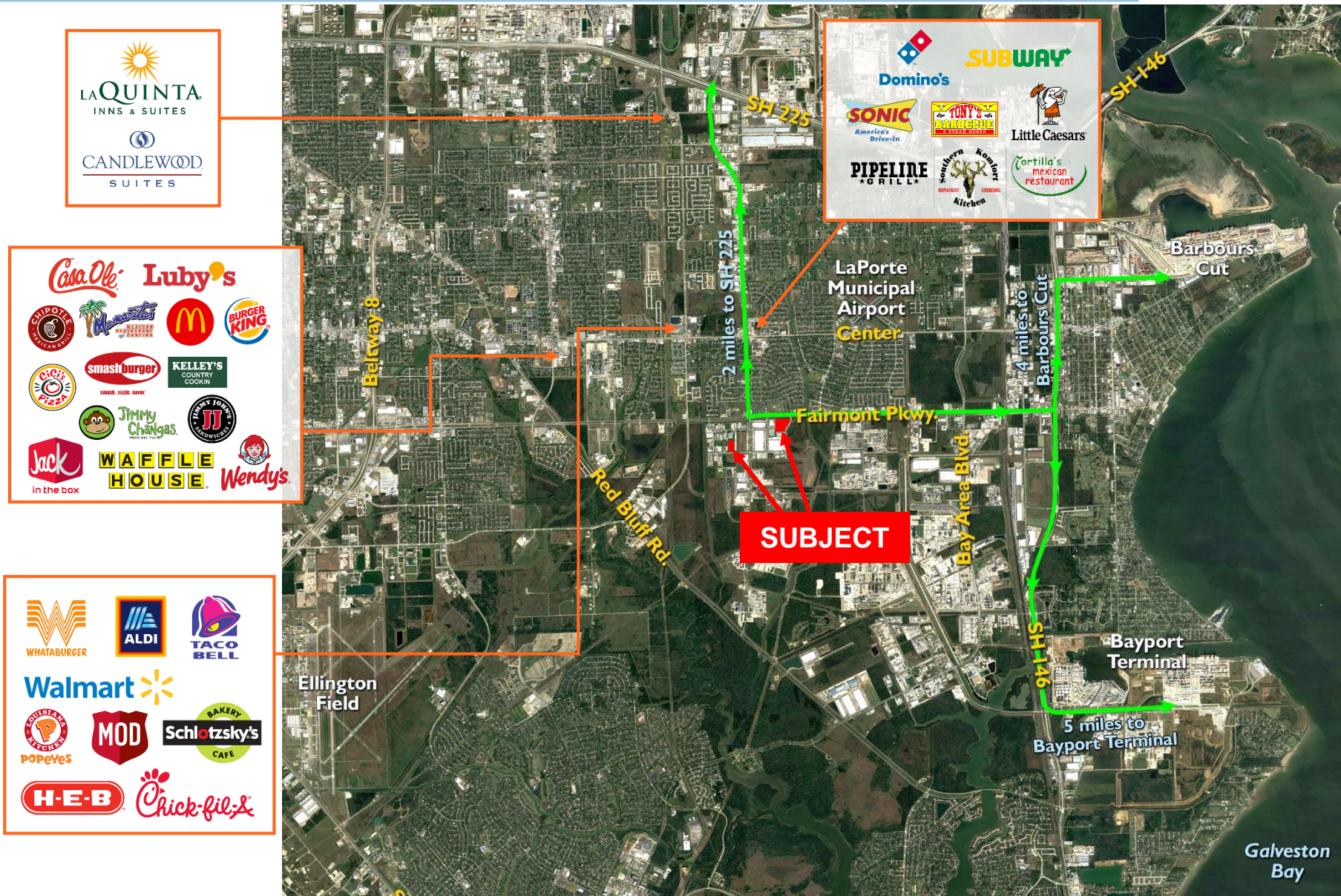
JASON DILLEE
(713) 345 1432
Jason.Dillee@cushwake.com

ANDREW JEWETT
(713) 345 1433
Andrew.Jewett@cushwake.com

Cushman & Wakefield of Texas, Inc.
1330 Post Oak Boulevard | Suite 2700
Houston, TX 70056

Bayport North Logistics Center I & II

Two State of the Art Industrial Buildings - ±102,863 SF & ±233,190 SF



JASON DILLEE
 (713) 345 1432
Jason.Dillee@cushwake.com

ANDREW JEWETT
 (713) 345 1433
Andrew.Jewett@cushwake.com

Cushman & Wakefield of Texas, Inc.
 1330 Post Oak Boulevard | Suite 2700
 Houston, TX 70056