

GREAT SPACE, GREAT PRICE!



OFFICE SPACE AVAILABLE FOR LEASE



CHEVY'S SQUARE

17035 N. 67th Avenue | Glendale, AZ

Suite 12/13 2,000 SqFt

Space offered at: **\$13.50**/sf NNN

Chevy's Square is suitably located just north of Bell Road, 2 miles south and east of the Loop 101 and 1.5 miles east of Arrowhead Towne Center.

For more information please contact:

Jeremy Johnson

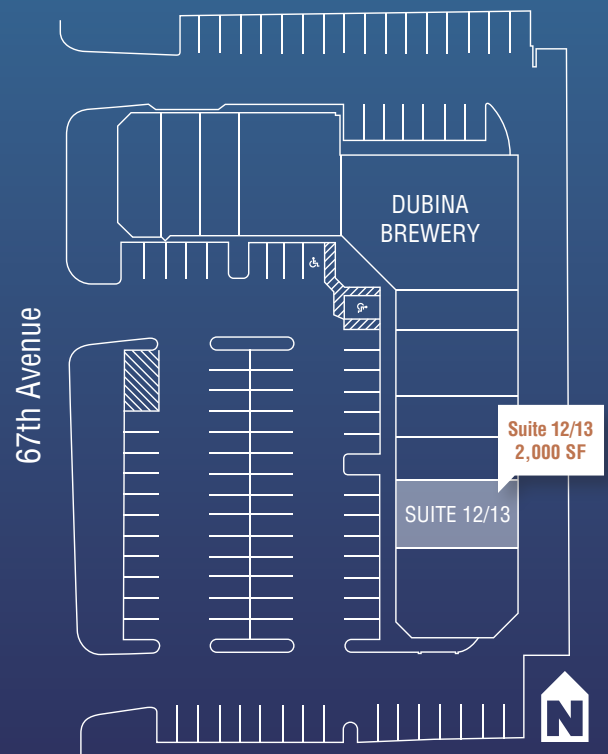
Senior Property Manager

602.252.9300 | jj@casehuff.com

Professionally Leased & Managed by



www.casehuff.com



CHEVY'S SQUARE

FLOORPLAN



Space Available for Lease:

Suite 12/13 2,000 SqFt

Space offered at: **\$13.50**/sf NNN

The last space available in the center, already built out for physical training use, an ideal location for a small gym, physical therapy clinic, etc.

Location

Chevy's Square is located in a dense retail corridor, near a number of large residential communities which contribute to high traffic volumes and excellent demographics:

Facility Amenities

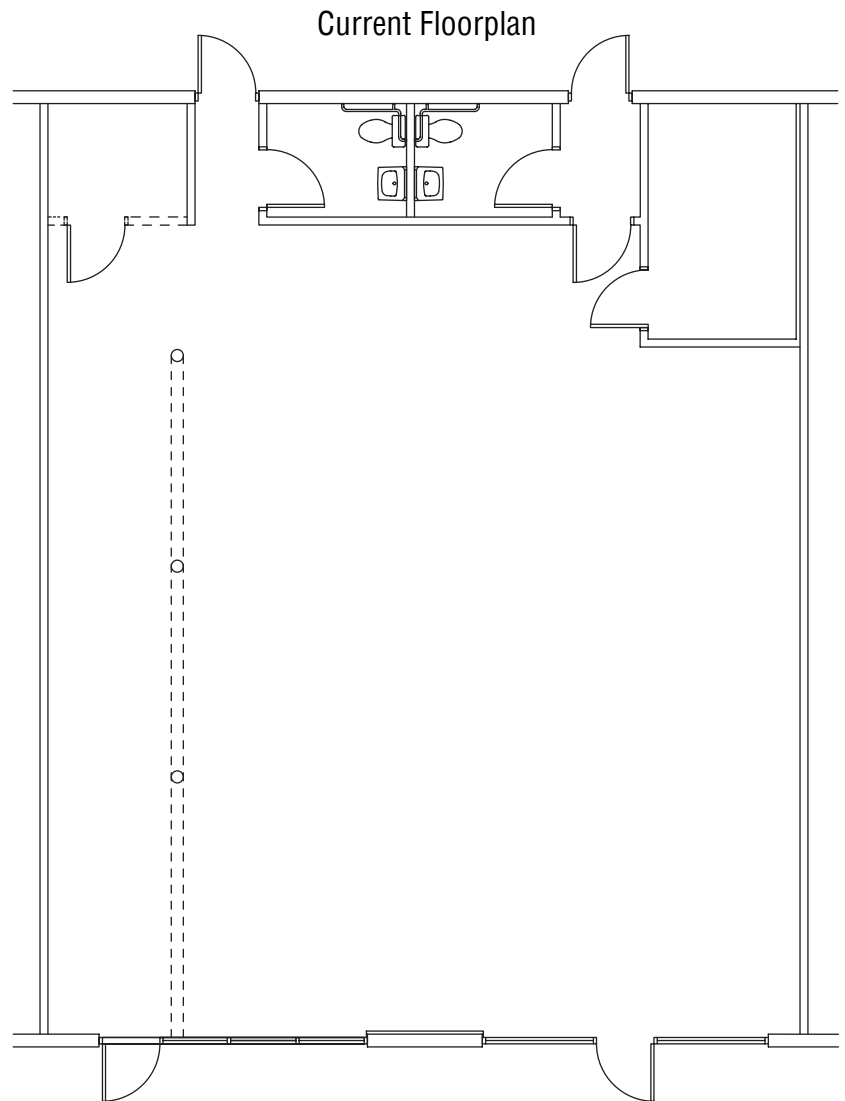
- Building Size: ±18,160 sf.
- Great 5.8/1,000 parking ratio.

Traffic Counts:

Bell Road 44,100 VPD
67th Avenue 28,100 VPD

Demographics (85308 Zip Code):

Population 56,535
Median HH Income \$68,049



For more information please contact:

Jeremy Johnson

Senior Property Manager

602.252.9300 | jj@casehuff.com

Professionally Leased & Managed by



www.casehuff.com

DISCLAIMER: No warranty or representation, express or implied, is made to the accuracy of the information contained herein and same is submitted subject to errors, omissions, change of price, rental or other conditions, withdrawal without notice and to any special listing conditions imposed by our principals.