



# NORTHPOINTE PLAZA FOR LEASE

7500 W State Street  
**SF AVAILABLE: 1,200 - 3,476**  
**BUILDING SIZE: 6,368 SF**

## PROPERTY HIGHLIGHTS

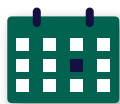
- Signalized Intersection of State Street and W. Saxton Drive
- Shadow anchored by Walmart
- Part of the NorthPointe Retail Development & Kensington Apartments
- Other Tenants Include, Pacific Dental (Coming Soon), Black Bear Diner, Chipotle, Brixx Craft House, and many other tenants



AVAILABLE SPACE  
**1,200 - 3,476 SF**



BUILDING SIZE  
**6,368 SF**



LEASE TERM  
**5 Years +**



ASKING RATE  
**Negotiable**



**INTERMOUNTAIN**  
COMMERCIAL REAL ESTATE

**DARIN BURRELL**  
darin@icrellc.com  
(208) 286-2260 office  
(208) 860-0332 cell

**SETH MCCORMACK**  
seth@icrellc.com  
(208) 286-2272 office  
(208) 918-1030 cell



## EXECUTIVE SUMMARY

Available SF: **1,200 - 3,476 SF**

Lease Rate: **Negotiable**

Lease Type: **NNN**

Total Lot Size: **0.87 Acres**

Building Size: **6,368 SF**

VPD: **41,000+**

Cross Streets:  
**W Saxton & W State St**

Market: **Northwest Boise**

### Location

North Boise, ID at hard corner of W Saxton Dr and W State St, next to brand new Pacific Dental office, in the new North Pointe retail development and Kensington apartments.



**INTERMOUNTAIN**  
COMMERCIAL REAL ESTATE

**DARIN BURRELL**  
darin@icrellc.com  
(208) 286-2260 office  
(208) 860-0332 cell

**SETH MCCORMACK**  
seth@icrellc.com  
(208) 286-2272 office  
(208) 918-1030 cell

# NORTHPOINTE PLAZA | 7500 W STATE ST, BOISE



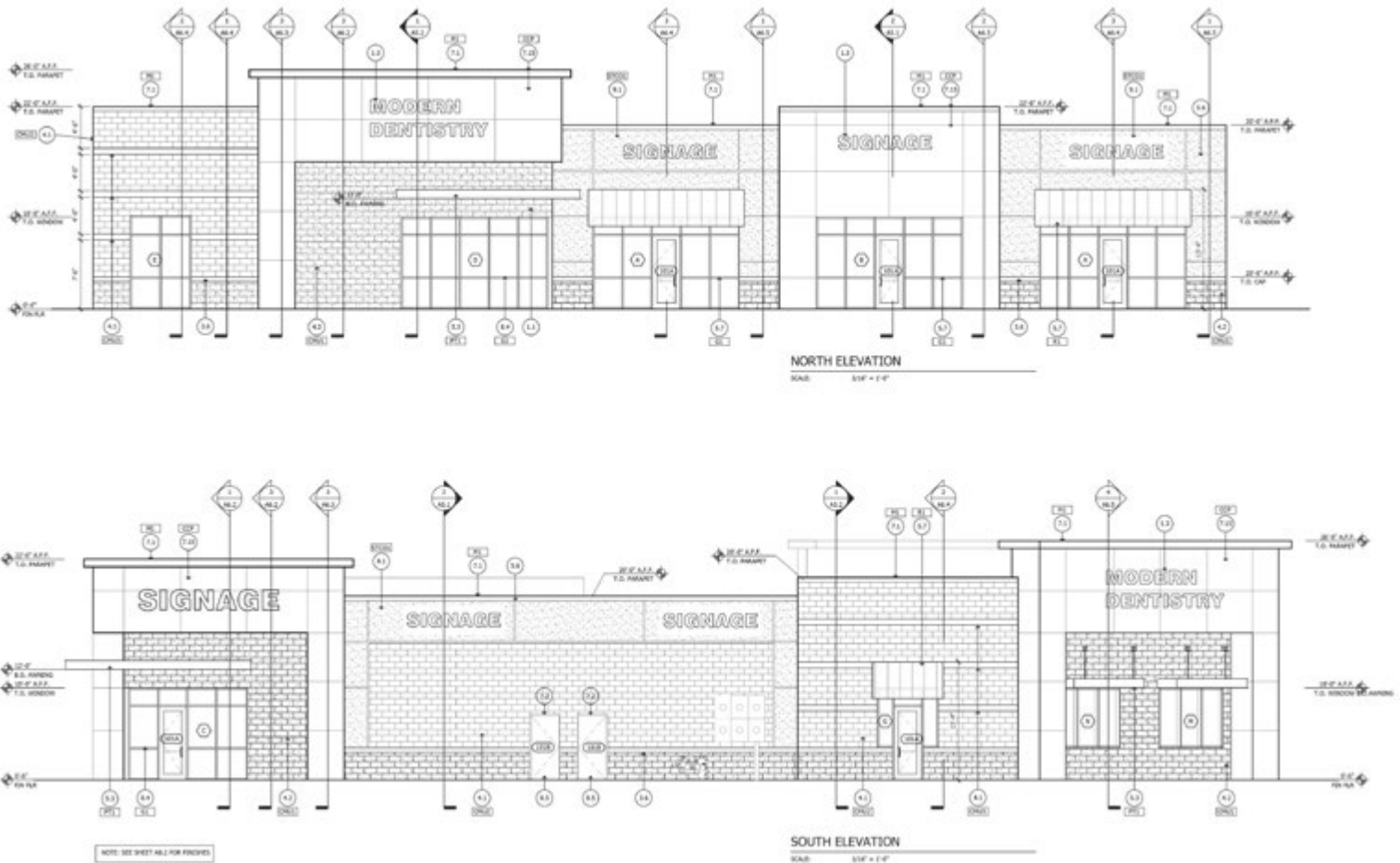
**INTERMOUNTAIN**  
COMMERCIAL REAL ESTATE

**DARIN BURRELL**  
darin@icrellc.com  
(208) 286-2260 office  
(208) 860-0332 cell

**SETH MCCORMACK**  
seth@icrellc.com  
(208) 286-2272 office  
(208) 918-1030 cell

**www.icreboise.com | 380 E. Parkcenter Boulevard Suite 290, Boise, ID 83706 | (208) 429-8603 office | (208) 429-8604 fax**

The information has been obtained from sources believed reliable and, while we do not doubt its reliability, ICRE has not verified it and makes no guarantees, warranties or representations, expressed or implied, as to its accuracy. All interested parties should conduct their own independent investigation and rely on those results.

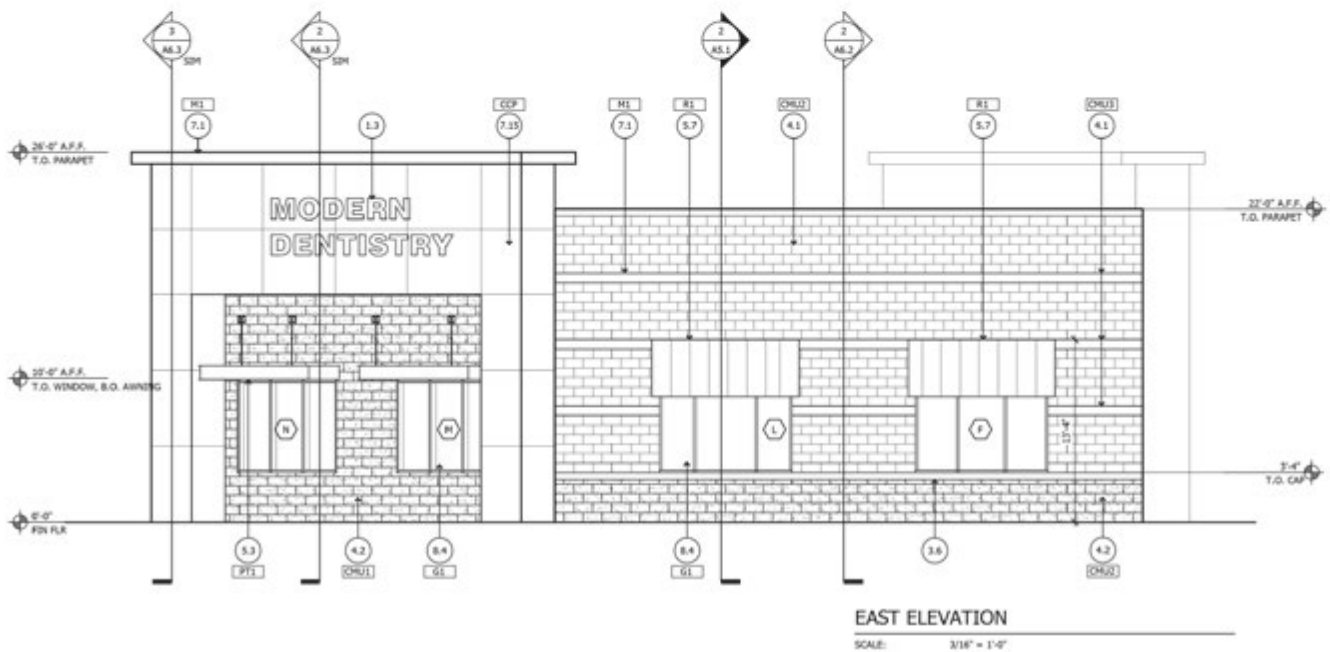
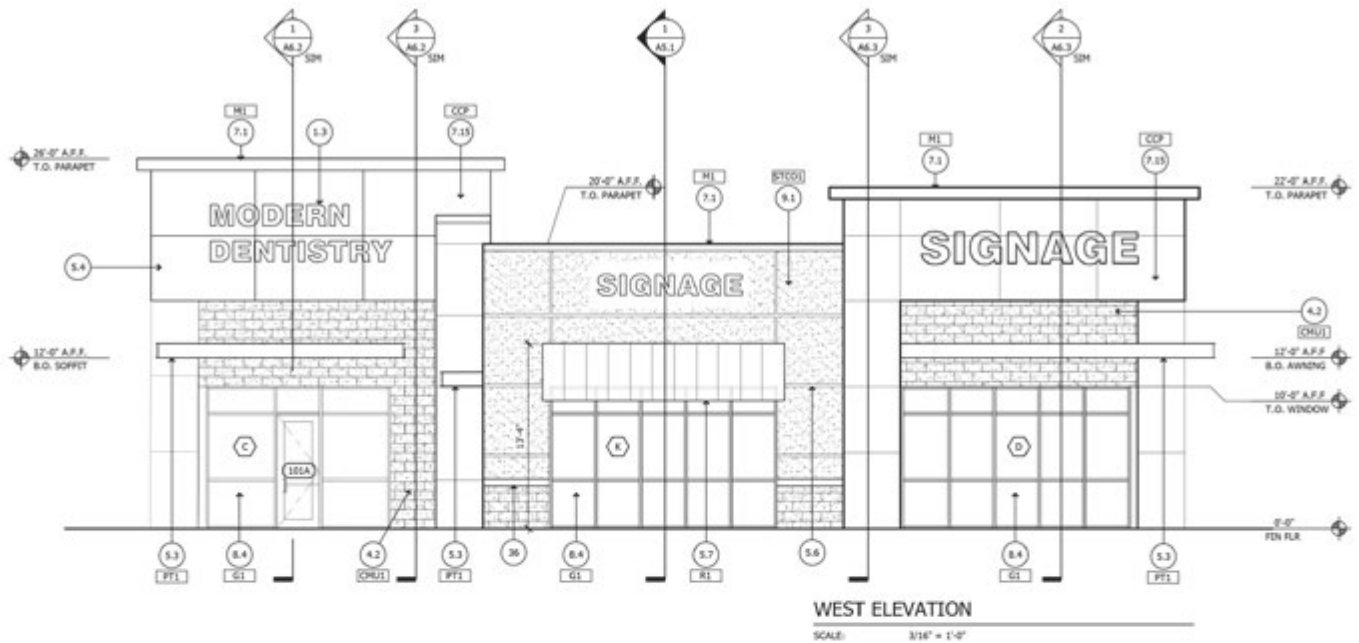


**INTERMOUNTAIN**  
COMMERCIAL REAL ESTATE

**DARIN BURRELL**  
darin@icrellc.com  
(208) 286-2260 office  
(208) 860-0332 cell

**SETH MCCORMACK**  
seth@icrellc.com  
(208) 286-2272 office  
(208) 918-1030 cell

# NORTHPOINTE PLAZA | 7500 W STATE ST, BOISE



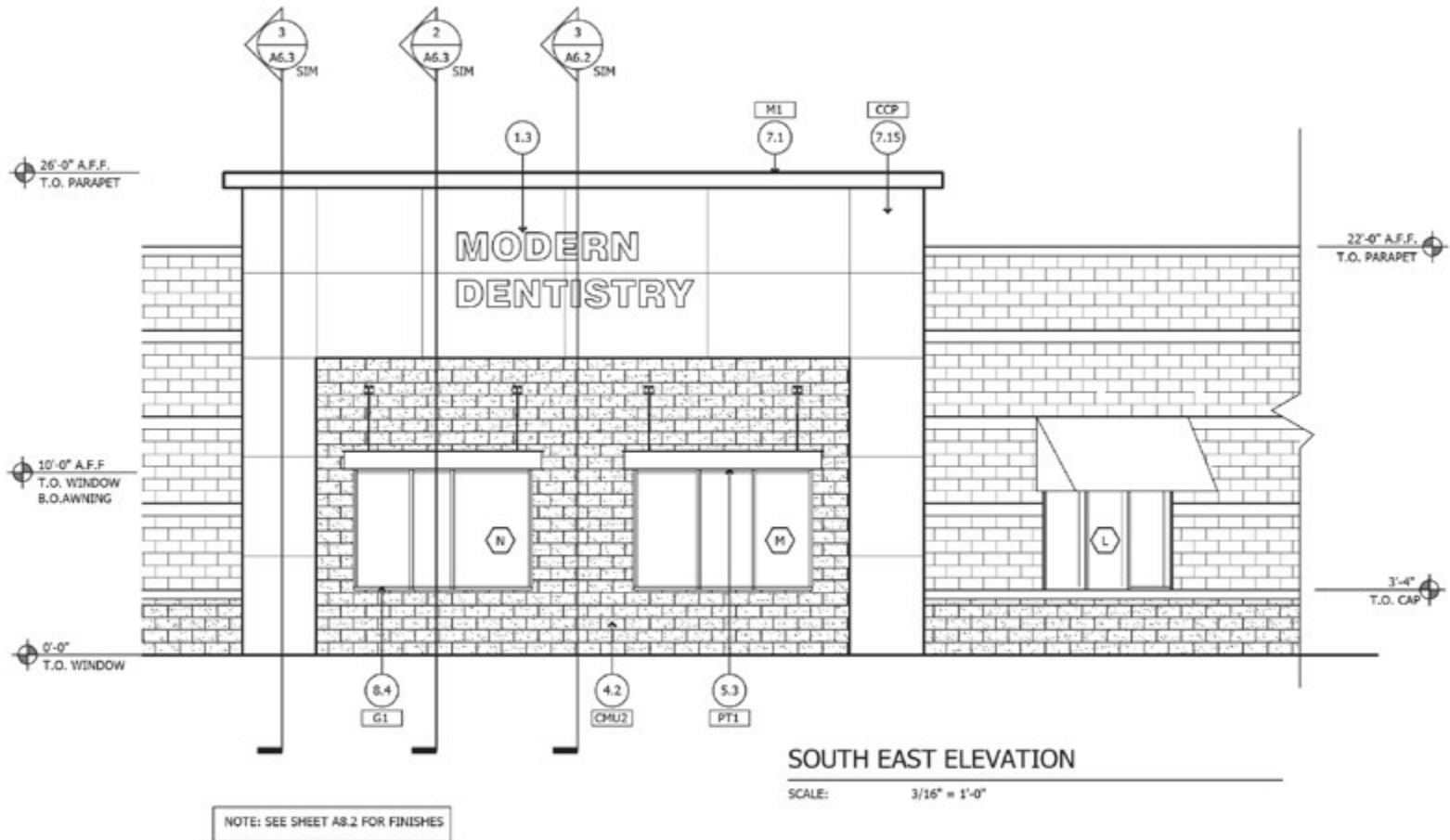
**INTERMOUNTAIN**  
COMMERCIAL REAL ESTATE

**DARIN BURRELL**  
darin@icrellc.com  
(208) 286-2260 office  
(208) 860-0332 cell

**SETH MCCORMACK**  
seth@icrellc.com  
(208) 286-2272 office  
(208) 918-1030 cell

**www.icreboise.com | 380 E. Parkcenter Boulevard Suite 290, Boise, ID 83706 | (208) 429-8603 office | (208) 429-8604 fax**

The information has been obtained from sources believed reliable and, while we do not doubt its reliability, ICRE has not verified it and makes no guarantees, warranties or representations, expressed or implied, as to its accuracy. All interested parties should conduct their own independent investigation and rely on those results.

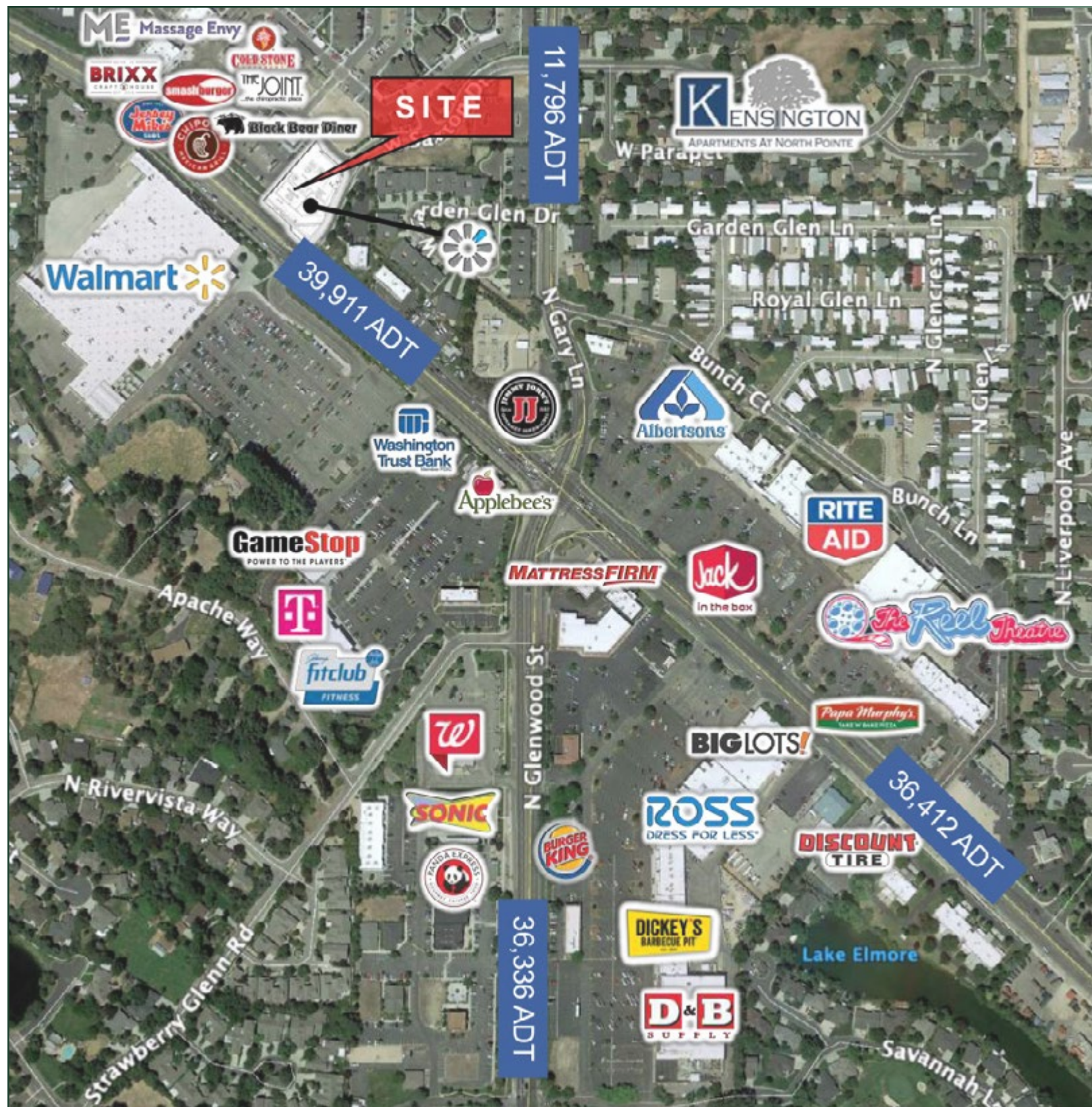


**INTERMOUNTAIN**  
COMMERCIAL REAL ESTATE

**DARIN BURRELL**  
darin@icrellc.com  
(208) 286-2260 office  
(208) 860-0332 cell

**SETH MCCORMACK**  
seth@icrellc.com  
(208) 286-2272 office  
(208) 918-1030 cell

# NORTHPOINTE PLAZA | 7500 W STATE ST, BOISE



**INTERMOUNTAIN**  
COMMERCIAL REAL ESTATE

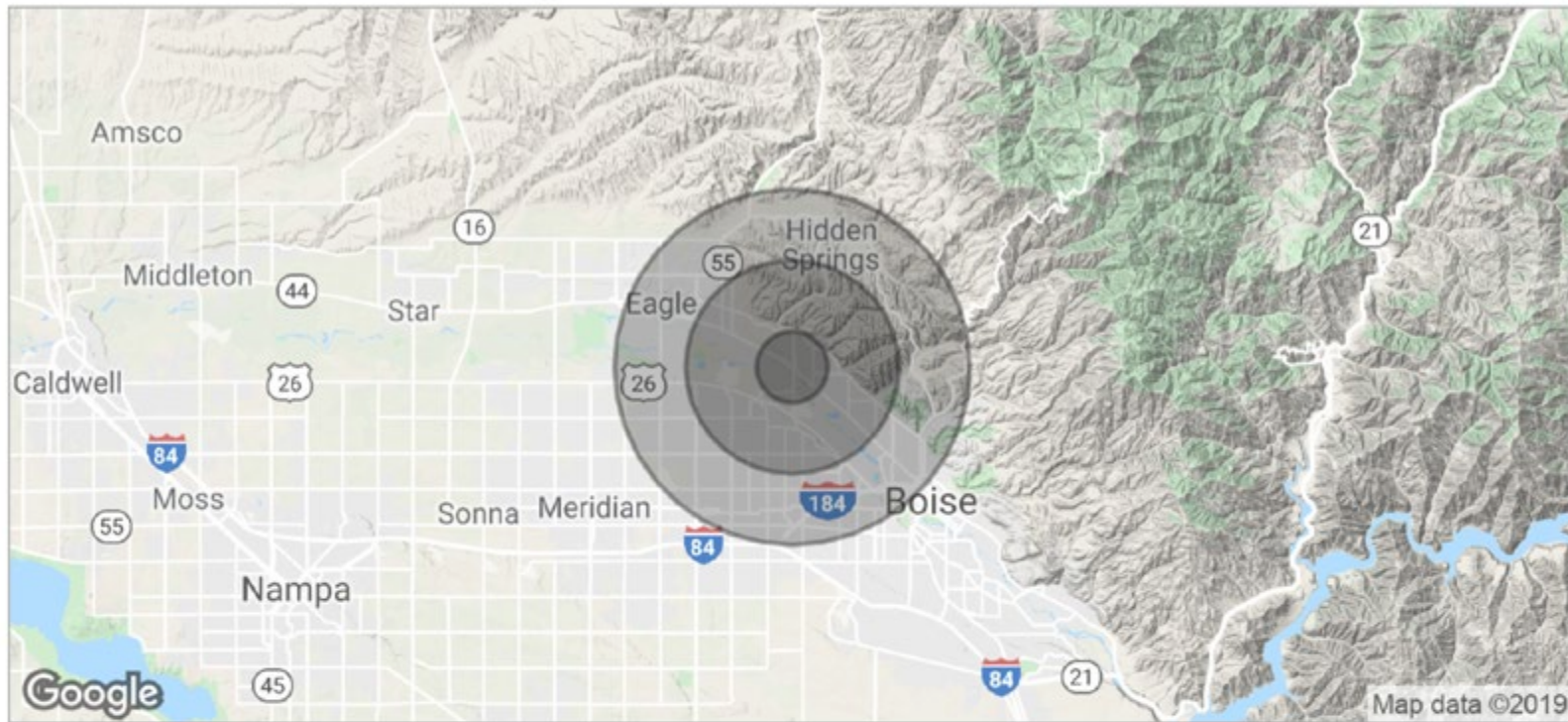
**DARIN BURRELL**  
darin@icrellc.com  
(208) 286-2260 office  
(208) 860-0332 cell

**SETH MCCORMACK**  
seth@icrellc.com  
(208) 286-2272 office  
(208) 918-1030 cell

[www.icreboise.com](http://www.icreboise.com) | 380 E. Parkcenter Boulevard Suite 290, Boise, ID 83706 | (208) 429-8603 office | (208) 429-8604 fax

The information has been obtained from sources believed reliable and, while we do not doubt its reliability, ICRE has not verified it and makes no guarantees, warranties or representations, expressed or implied, as to its accuracy. All interested parties should conduct their own independent investigation and rely on those results.

# NORTHPOINTE PLAZA | 7500 W STATE ST, BOISE



## POPULATION

	1 MILE	3 MILES	5 MILES
TOTAL POPULATION	8,048	57,631	153,669
MEDIAN AGE	40.4	39.9	36.9
MEDIAN AGE (MALE)	36.8	38.6	36.2
MEDIAN AGE (FEMALE)	43.7	41.0	37.4

## HOUSEHOLDS & INCOME

	1 MILE	3 MILES	5 MILES
TOTAL HOUSEHOLDS	3,583	24,091	63,019
# OF PERSONS PER HH	2.2	2.4	2.4
AVERAGE HH INCOME	\$66,576	\$66,220	\$64,511
AVERAGE HOUSE VALUE	\$257,503	\$218,992	\$219,014



**INTERMOUNTAIN**  
COMMERCIAL REAL ESTATE

**DARIN BURRELL**  
darin@icrellc.com  
(208) 286-2260 office  
(208) 860-0332 cell

**SETH MCCORMACK**  
seth@icrellc.com  
(208) 286-2272 office  
(208) 918-1030 cell

**www.icreboise.com | 380 E. Parkcenter Boulevard Suite 290, Boise, ID 83706 | (208) 429-8603 office | (208) 429-8604 fax**

The information has been obtained from sources believed reliable and, while we do not doubt its reliability, ICRE has not verified it and makes no guarantees, warranties or representations, expressed or implied, as to its accuracy. All interested parties should conduct their own independent investigation and rely on those results.