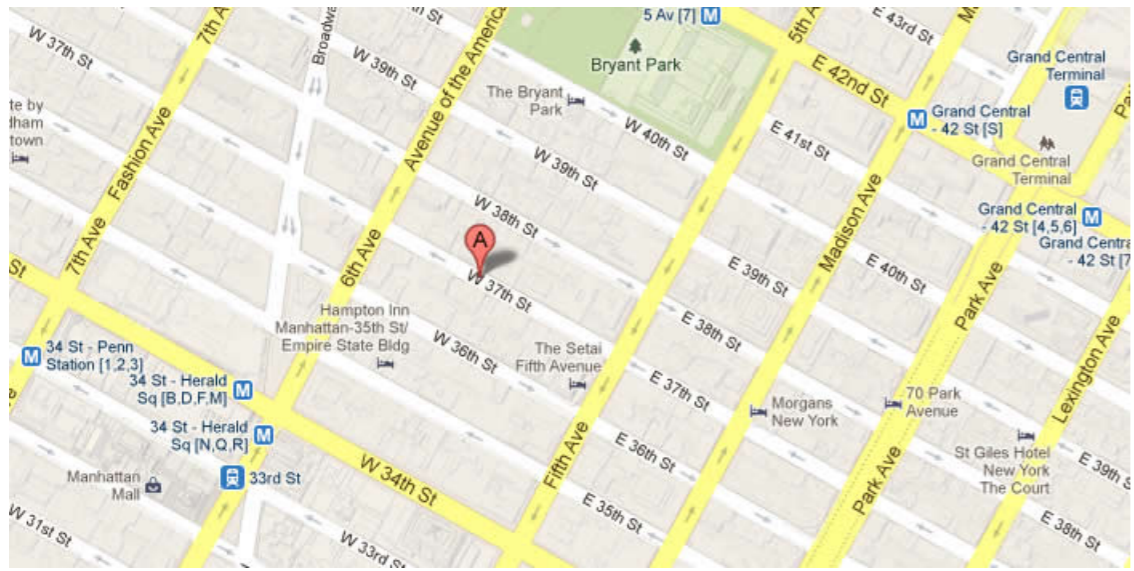




37 WEST 37TH STREET, New York, NY 10018



61,722.00 SF

Office building with modern marble lobby
and 24 hour access

Built: 1915 Architect: Herman Lee Meader

Tenants

SYNOPSIS, INC.

EZRASONS, INC.

STYLE N.Y. - TEL AVIV INC.

Creative Media Design

DWM DANCE STUDIO MIDTOWN LLC

For more information call

1- 212- 249- 1550

KOEPEL ROSEN

40 East 69th Street

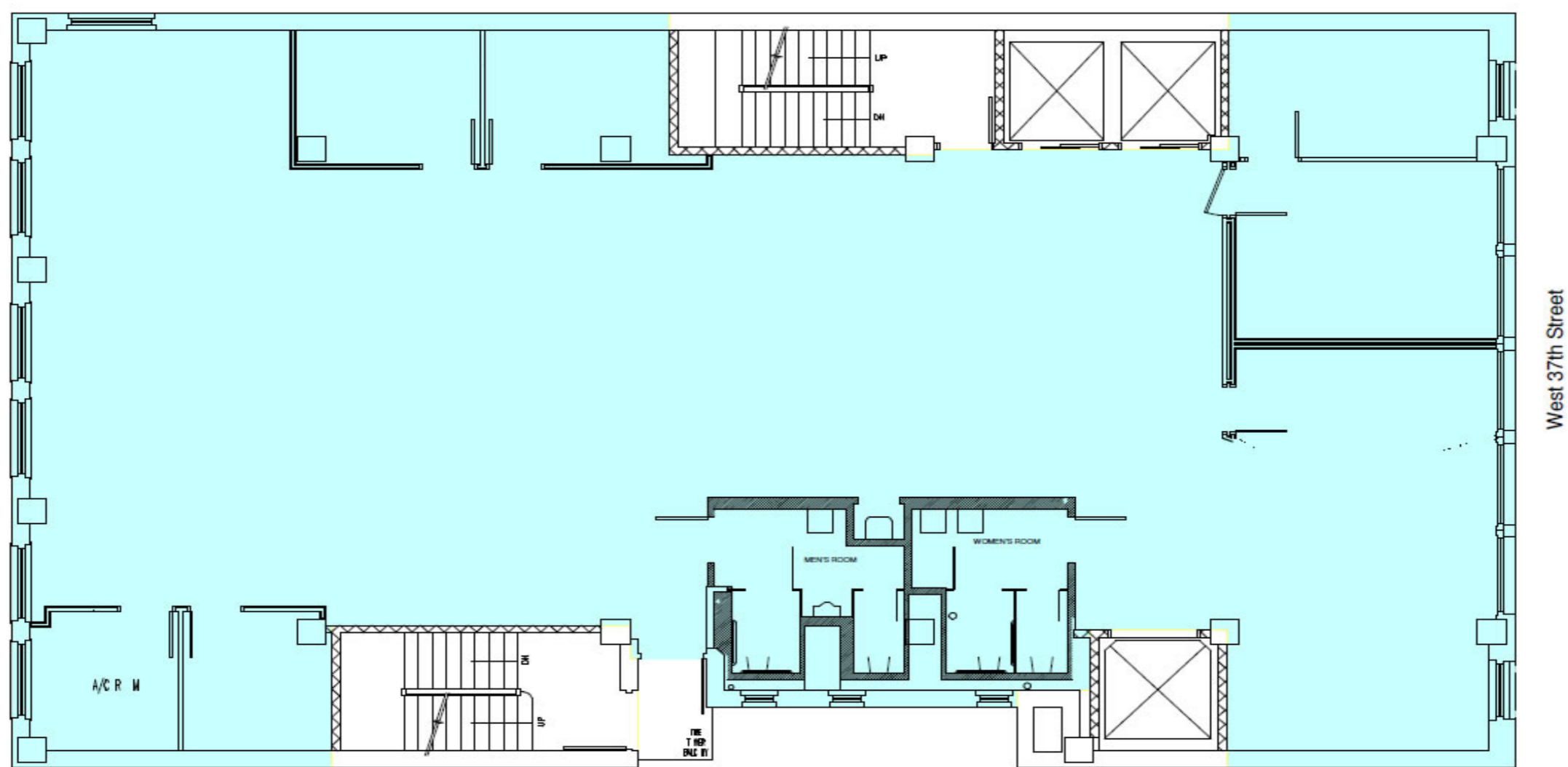
New York, NY 10021

dkoepfel@koepfelrosen.com

37 WEST 37TH STREET, New York, NY 10018

37 West 37th Street

Typical Floor Plan



K R Koeppel Rosen LLC
 40 East 69th Street
 New York, NY 10021
 212-249-1550
 www.koeppelrosen.com

Note: All dimensions and conditions are approximate and for information only

Scale: NTS
 Date: February .10, 2016



For more information call
 1- 212- 249- 1550
 KOEPEL ROSEN
 40 East 69th Street
 New York, NY 10021
 dkoeppel@koeppelrosen.com