

Newly Remodeled Office Space for Lease

624 West Hastings | Spokane, Washington



Lease Rate - Suite 3

1,153 SF +/-

\$12.00 /SF/YR/NNN

Property Information:

Building Size: 9216 SF

Land Size: 66,211 SF

**Bright, Open
Interior!**

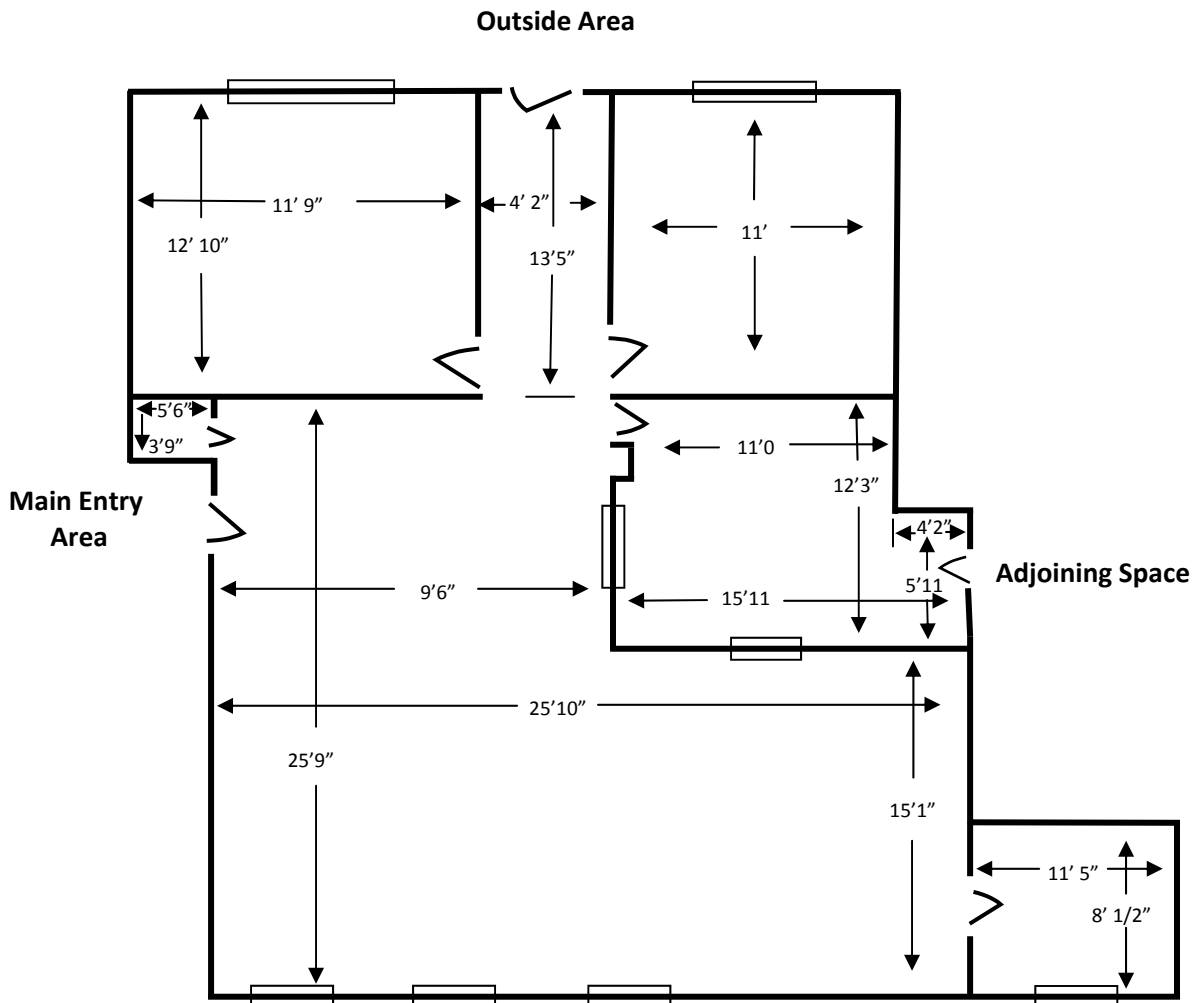


3 Office + Entry
Area and
Resource Room

Hallway Entrance
from Main Lobby
as well as a Private
Entrance from
N.E. Parking Lot

All information is furnished by the owner and believed to be complete and correct. The Agent and Owner, however, cannot be responsible for changes, errors, omissions or withdrawals of this offering without notice. The above information is from sources deemed reliable but should be verified by parties that could be adversely affected by any statements or information.

Floor Plan - Suite 3



All information is furnished by the owner and believed to be complete and correct. The Agent and Owner, however, cannot be responsible for changes, errors, omissions or withdrawals of this offering without notice. The above information is from sources deemed reliable but should be verified by parties that could be adversely affected by any statements or information.



Newly Remodeled Interior!



Shared Reception

All information is furnished by the owner and believed to be complete and correct. The Agent and Owner, however, cannot be responsible for changes, errors, omissions or withdrawals of this offering without notice. The above information is from sources deemed reliable but should be verified by parties that could be adversely affected by any statements or information.



CORNERSTONE
PROPERTY ADVISORS LLC

624 West Hastings

Spokane, Washington



All information is furnished by the owner and believed to be complete and correct. The Agent and Owner, however, cannot be responsible for changes, errors, omissions or withdrawals of this offering without notice. The above information is from sources deemed reliable but should be verified by parties that could be adversely affected by any statements or information.

1015 N. Calispel Ste A | Spokane WA 99201

509.321.2000

www.cornerstonepropertyadv.com

MICHAEL DULLANTY **MATTHEW BYRD**

509.321.2003 - Direct

509.499.9229 - Cell

matt@cornerstonepropertyadv.com

509.321.2003 - Direct

509.499.9229 - Cell

matt@cornerstonepropertyadv.com