

FOR LEASE

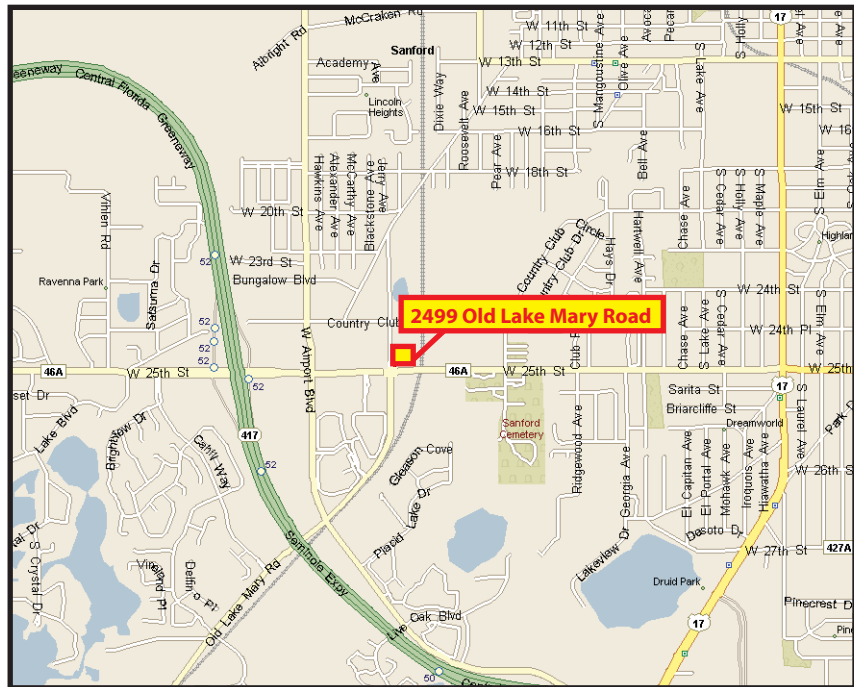
2499 OLD LAKE MARY ROAD | SANFORD, FL | 32771

Recently Renovated



FEATURES:

- ◆ Total Building Size: 32,000 SF
- ◆ Space Size: From 1,250 SF to 5,000 SF
 - Office: From 200 SF to 1,300 SF
 - Warehouse: From 300 SF to 2,500 SF
- ◆ Space Dimension: 50'D x 25'W
- ◆ Ceiling Height: 12' - 18'
- ◆ Building Depth: 50'
- ◆ Construction: Concrete Block / Stucco
- ◆ Parking: 52 lined spaces
- ◆ Zoning: RI-1, Restricted Industrial
- ◆ Loading: Grade Level/Street Level
- ◆ Building Jurisdiction: City of Sanford
- ◆ Utilities: Phone: Brighthouse/AT&T
Water/Sewer: City of Sanford
Power: FL Power
- ◆ New Ownership



FINANCIAL INFORMATION:

- ◆ Lease Rate: From \$695.00 Gross plus tax
- ◆ Terms: Short and Long term with free months rent

FOR LEASING INFORMATION CONTACT:

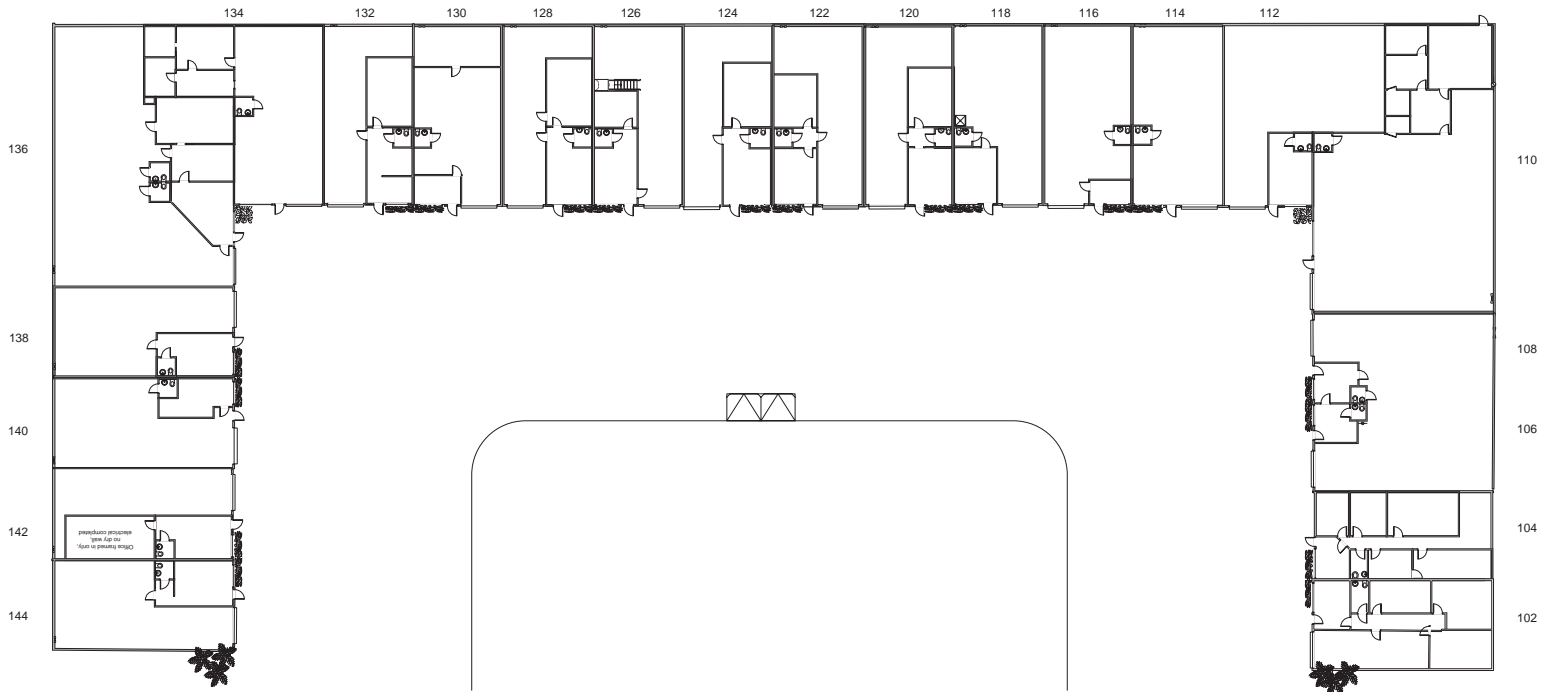
CONNIE RICHARDSON

OFFICE: 407|302|2101

CELL: 407|417|0777

FOR LEASE

2499 OLD LAKE MARY ROAD | SANFORD, FL | 32771



Transportation:

- ◆ SR 417 (Greenway) .40 Miles
- ◆ I-4 3 Miles
- ◆ SR 46 1 Mile
- ◆ 17-92 1.5 Miles
- ◆ Minutes from Orlando-Sanford Int'l Airport

FOR LEASING INFORMATION CONTACT:

CONNIE RICHARDSON

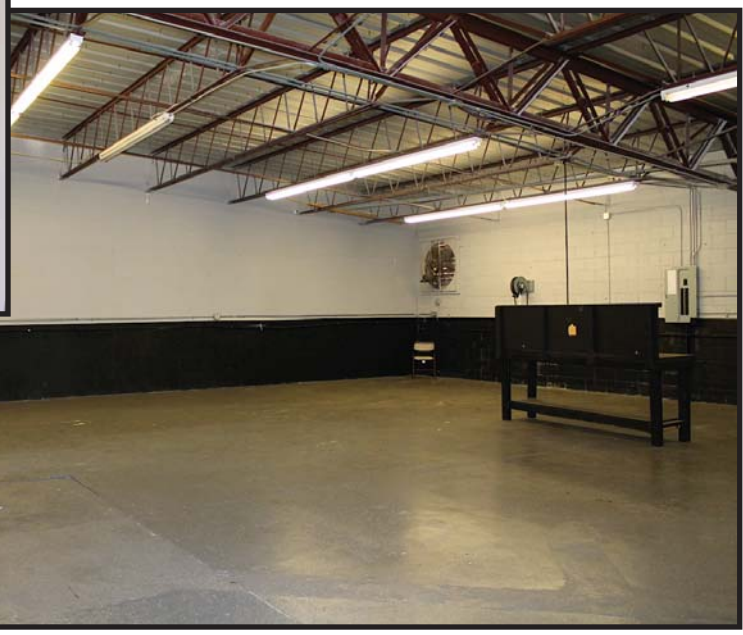
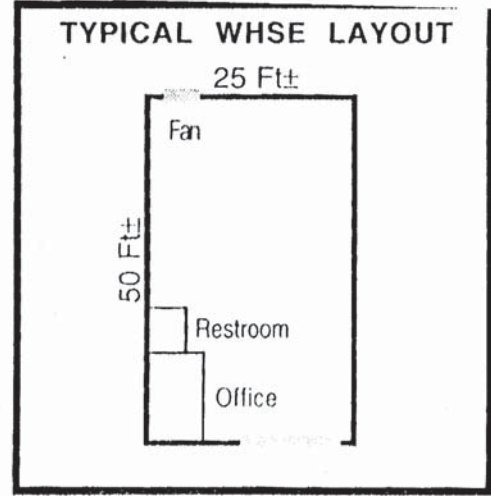
OFFICE: 407|302|2101

CELL: 407|417|0777

FOR LEASE

2499 OLD LAKE MARY ROAD | SANFORD, FL | 32771

Floor plan



FOR LEASING INFORMATION CONTACT:

CONNIE RICHARDSON
OFFICE: 407|302|2101
CELL: 407|417|0777

Although all information furnished regarding for sale, rental or financing is from sources we deem reliable, such information has not been verified and no express representation is made nor is any to be implied as to the accuracy thereof, and it is submitted subject to errors, omissions, changes of price, rental or other conditions, prior sale, lease or financing, or withdrawal without notice.