

# FORMER ART VAN HQ/WAREHOUSE – FOR SALE / LEASE



**6500 FOURTEEN MILE ROAD | WARREN, MI**

## PROPERTY FEATURES

- 1,056,890 available square feet for sale or lease
  - 39,575 sq. ft. freestanding single story office building
  - 47,050 sq. ft. corporate offices
  - 53,605 sq. ft. of 100' high rise automated warehouse
- 38' – 100' clear height
- (12) grade level doors, (212) truckwells
- Situated on 63 acres
- 1152 parking spaces
- Zoned M-2, Light Industrial
- Very clean distribution center!
- 3,000 feet adjacent to rail
- Lease Rate: \$5.25/sq.ft. NNN
- Sale Price: \$65,000,000 (\$61.50/sq.ft.)



For more information, please contact:

**JOE HAMWAY**  
(248) 948 0113

[jhamway@signatureassociates.com](mailto:jhamway@signatureassociates.com)

**GREG HUDAS**  
(248) 799 3162

[ghudas@signatureassociates.com](mailto:ghudas@signatureassociates.com)



**SIGNATURE  
ASSOCIATES**  
KNOW SIGNATURE | KNOW RESULTS



# 6500 Fourteen Mile Road – Warren, MI

Former Art Van HQ/Warehouse - For Sale or Lease

1,056,890  
Square Feet  
AVAILABLE



For more information, please contact:

**JOE HAMWAY**  
(248) 948 0113

[jhamway@signatureassociates.com](mailto:jhamway@signatureassociates.com)

**GREG HUDAS**  
(248) 799 3162

[ghudas@signatureassociates.com](mailto:ghudas@signatureassociates.com)

**SIGNATURE ASSOCIATES**  
One Towne Square, Suite 1200  
Southfield, MI 48076  
[www.signatureassociates.com](http://www.signatureassociates.com)



# 6500 Fourteen Mile Road – Warren, MI

Former Art Van HQ/Warehouse - For Sale or Lease

1,056,890  
Square Feet  
AVAILABLE



For more information, please contact:

**JOE HAMWAY**  
(248) 948 0113

[jhamway@signatureassociates.com](mailto:jhamway@signatureassociates.com)

**GREG HUDAS**  
(248) 799 3162

[ghudas@signatureassociates.com](mailto:ghudas@signatureassociates.com)

**SIGNATURE ASSOCIATES**  
One Towne Square, Suite 1200  
Southfield, MI 48076  
[www.signatureassociates.com](http://www.signatureassociates.com)

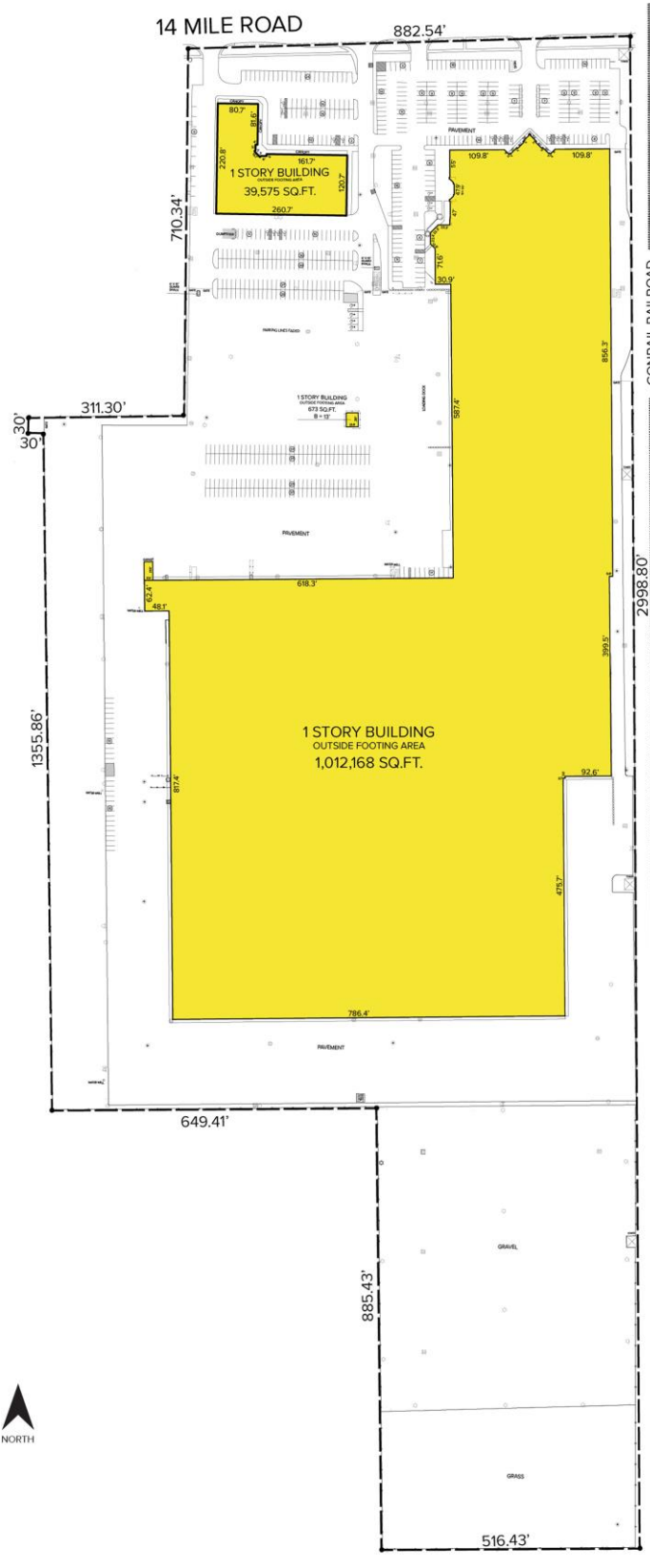


# 6500 Fourteen Mile Road – Warren, MI

Former Art Van HQ/Warehouse - For Sale or Lease

1,056,890  
Square Feet  
AVAILABLE

## Site Plan



For more information, please contact:

**JOE HAMWAY**  
(248) 948 0113

[jhamway@signatureassociates.com](mailto:jhamway@signatureassociates.com)

**GREG HUDAS**  
(248) 799 3162

[ghudas@signatureassociates.com](mailto:ghudas@signatureassociates.com)

**SIGNATURE ASSOCIATES**  
One Towne Square, Suite 1200  
Southfield, MI 48076  
[www.signatureassociates.com](http://www.signatureassociates.com)