



2,182± sf - 7,652± sf Available For Lease

Opportunity

- New directional signage and capital improvements
- Office/flex business park totaling 146,000± sf
- Manufacturing/flex space available with grade level access and loading
- On-site management office and building engineer
- Security guard on-site from 7:00pm - 1:00am
- Abundant parking

Rate and Term

- \$11.00/sf plus \$3.78/sf NNN

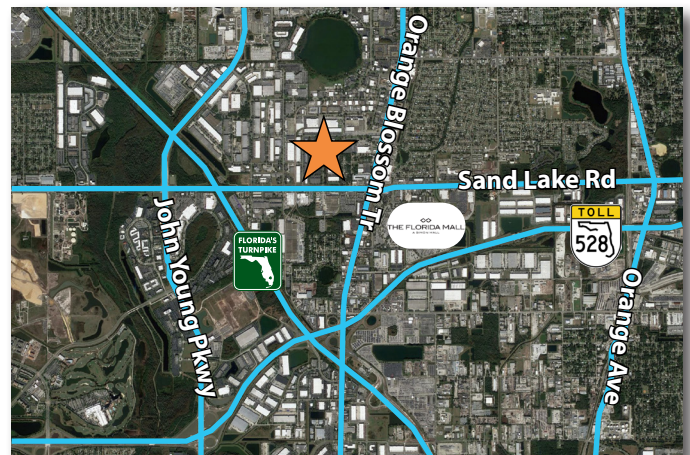
Location

- Conveniently located near an abundance of eateries, The Florida Mall, and the Orlando International Airport
- Easy access to Interstate-4, Beachline Expressway, The Florida Turnpike, and John Young Parkway

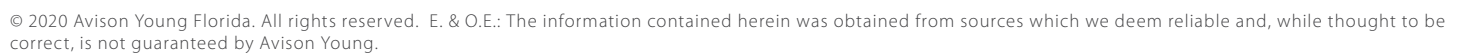
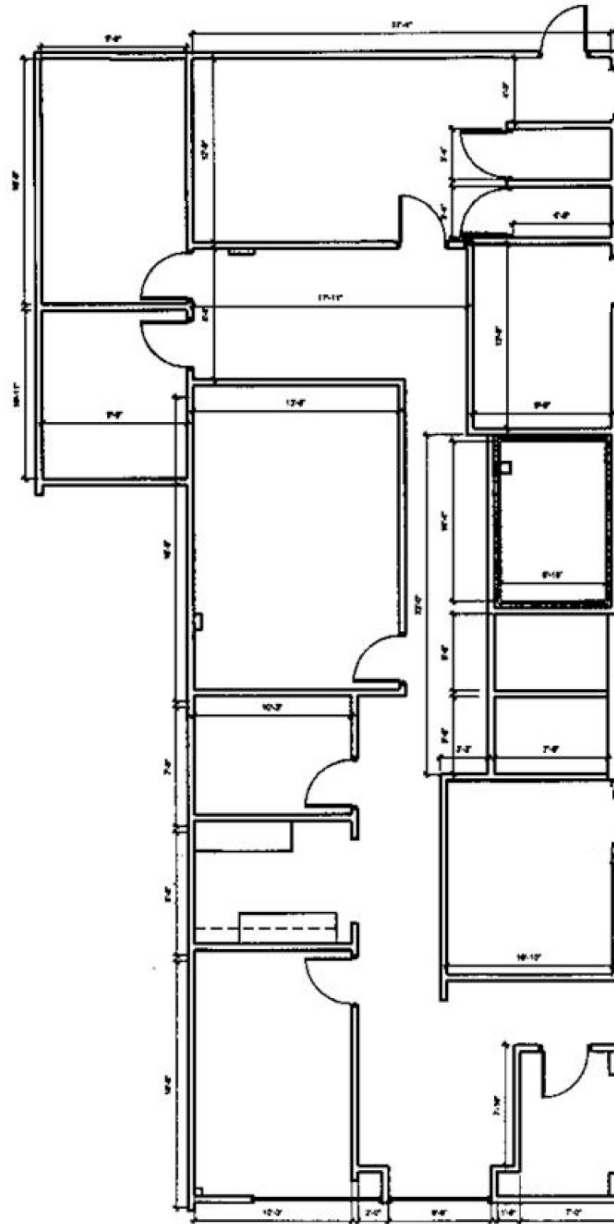
For more information, please contact:

Nathan Eissler, CCIM, SIOR, Principal
D 407 440 6658
C 407 342 7494
nathan.eissler@avisonyoung.com

135 W Central Avenue
Suite 700
Orlando, FL 32801
407 219 3500

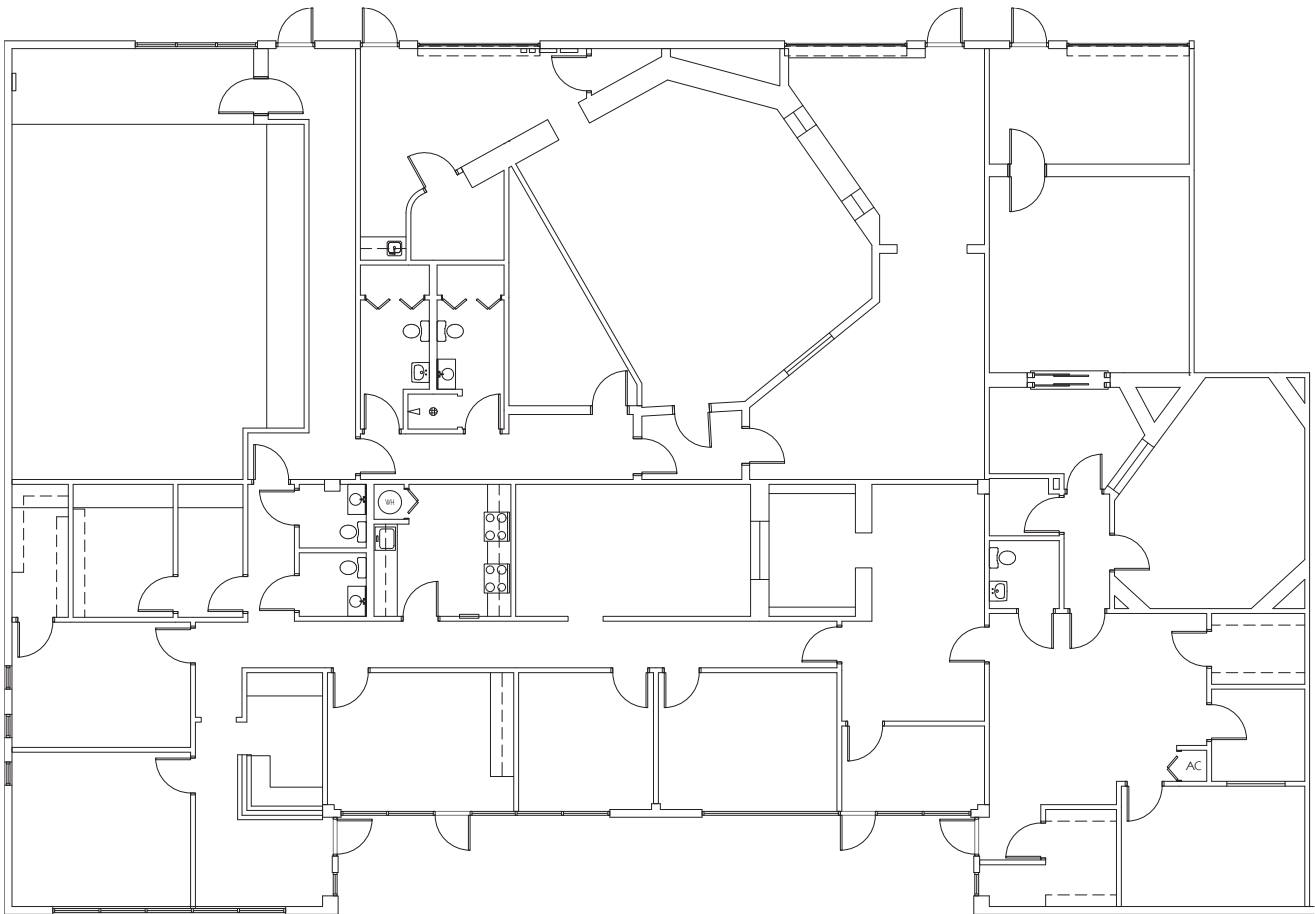


Commerce Point / 7550-7648 Southland Boulevard



Building 7566
Suite 107 - 7,652± sf

Commerce Point / 7550-7648 Southland Boulevard



avisonyoung.com

Nathan Eissler, CCIM, SIOR, Principal
D 407 440 6658
C 407 342 7494
nathan.eissler@avisonyoung.com