

CENTURION PLAZA

10245 CENTURION PKWY N, JACKSONVILLE, FL 32256

OFFICE SUITES
FOR LEASE



A prominent Class A building in the heart of Deerwood Park, Jacksonville's premier submarket for high-end office properties.

- Visible from both Butler Blvd & Southside Blvd
- Grand atrium entry with glass elevators
- Beautifully landscaped with fountains in front of building
- Conveniently located near retail, restaurants, and banking
- Near the Butler Blvd & Southside Blvd interchange
- Ample Parking

Joe Scavetto, VP Brokerage
Phone: (904) 424-9000
js@naihallmark.com

NAI Hallmark

www.naihallmark.com

6675 Corporate Center Parkway, Suite 100
Jacksonville, FL 32216 • (904) 363-9002

The information contained herein was obtained from reliable sources and is believed to be correct. However, all information presented should be verified as it is subject to errors and omissions. Pricing may change and/or property may be withdrawn from the market at any time without further notice. Copyright © 2017 - 2018 NAI Hallmark, LLC.

Last Updated: May 21, 2018

CENTURION PLAZA

10245 CENTURION PKWY N, JACKSONVILLE, FL 32256

COMMON
AREAS



Joe Scavetto, VP Brokerage
Phone: (904) 424-9000
js@naihallmark.com

NAI Hallmark

www.naihallmark.com

6675 Corporate Center Parkway, Suite 100
Jacksonville, FL 32216 • (904) 363-9002

The information contained herein was obtained from reliable sources and is believed to be correct. However, all information presented should be verified as it is subject to errors and omissions. Pricing may change and/or property may be withdrawn from the market at any time without further notice. Copyright © 2017 - 2018 NAI Hallmark, LLC.

Last Updated: May 21, 2018

CENTURION PLAZA

10245 CENTURION PKWY N, JACKSONVILLE, FL 32256

Suite	Rentable Square Feet	Asking Rate (Full Service)
105	1,650	\$23.50
305	6,394	\$22.50

Joe Scavetto, VP Brokerage
Phone: (904) 424-9000
js@naihallmark.com



www.naihallmark.com

6675 Corporate Center Parkway, Suite 100
Jacksonville, FL 32216 • (904) 363-9002

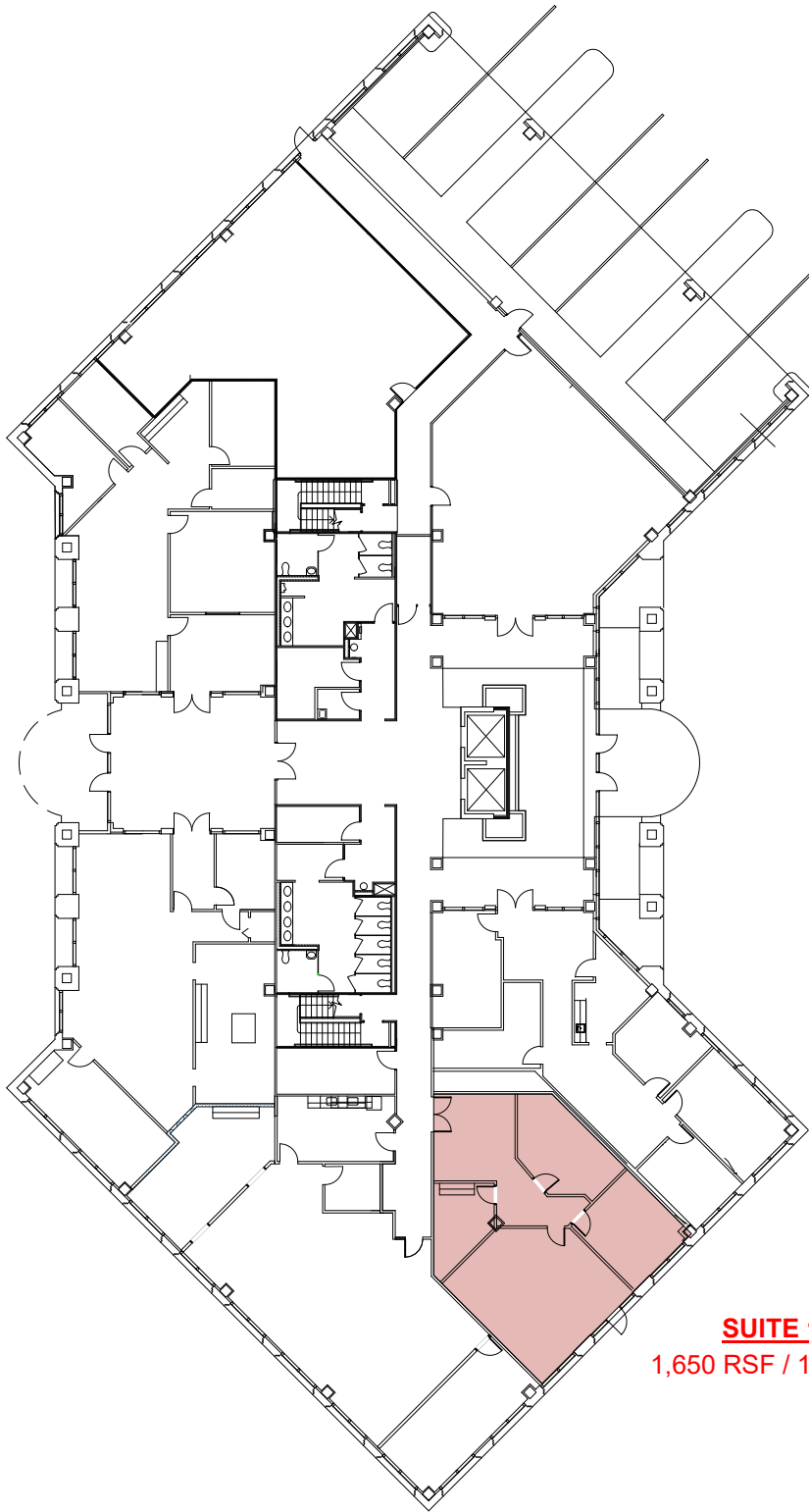
The information contained herein was obtained from reliable sources and is believed to be correct. However, all information presented should be verified as it is subject to errors and omissions. Pricing may change and/or property may be withdrawn from the market at any time without further notice. Copyright © 2017 - 2018 NAI Hallmark, LLC.

Last Updated: May 21, 2018

CENTURION PLAZA

10245 CENTURION PKWY N, JACKSONVILLE, FL 32256

FIRST
FLOOR



SUITE 105
1,650 RSF / 1,460 USF

Joe Scavetto, VP Brokerage
Phone: (904) 424-9000
js@naihallmark.com

NAI Hallmark

www.naihallmark.com

6675 Corporate Center Parkway, Suite 100
Jacksonville, FL 32216 • (904) 363-9002

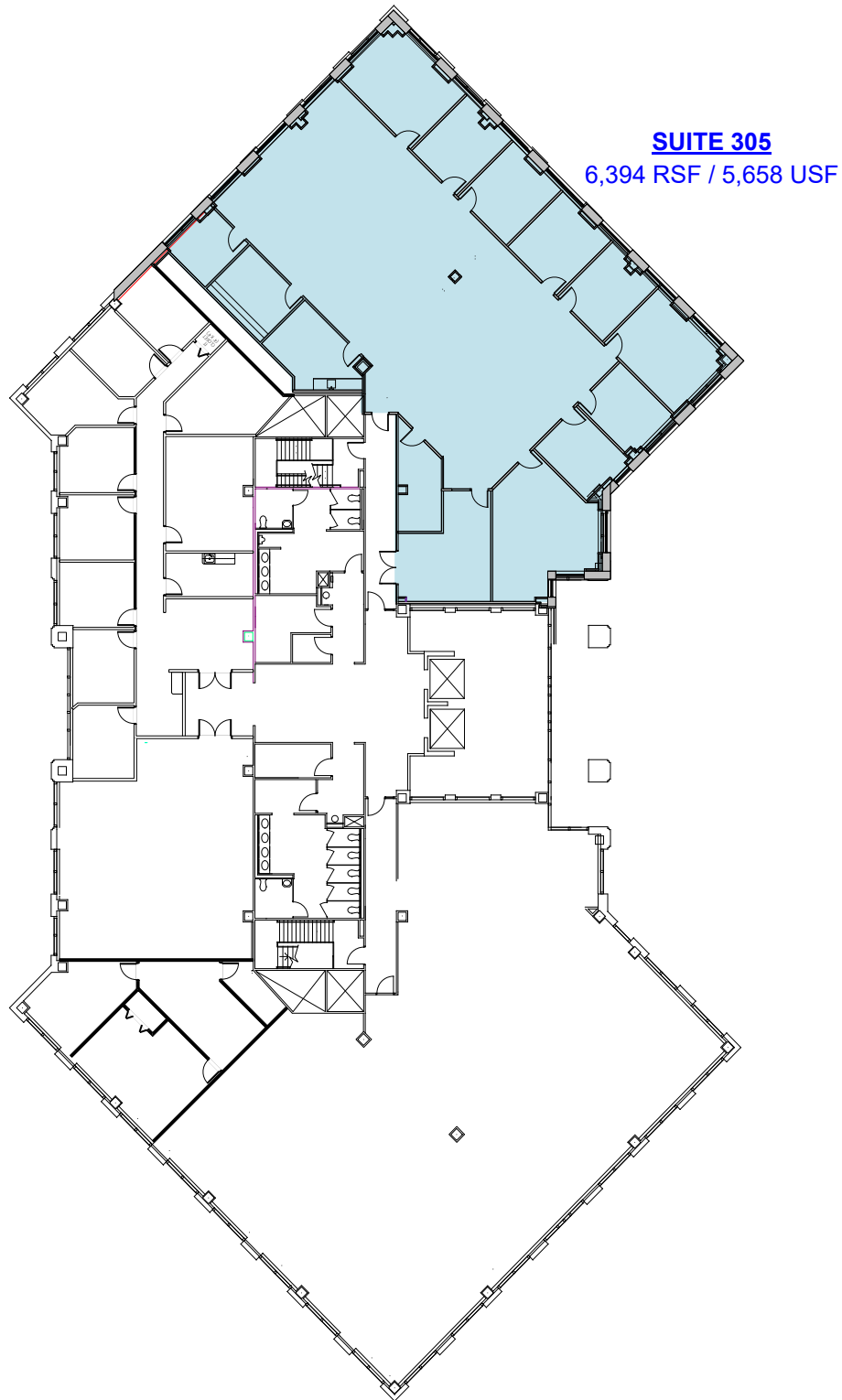
The information contained herein was obtained from reliable sources and is believed to be correct. However, all information presented should be verified as it is subject to errors and omissions. Pricing may change and/or property may be withdrawn from the market at any time without further notice. Copyright © 2017 - 2018 NAI Hallmark, LLC.

Last Updated: May 21, 2018

CENTURION PLAZA

10245 CENTURION PKWY N, JACKSONVILLE, FL 32256

THIRD
FLOOR



Joe Scavetto, VP Brokerage
Phone: (904) 424-9000
js@naihallmark.com

NAI Hallmark

www.naihallmark.com

6675 Corporate Center Parkway, Suite 100
Jacksonville, FL 32216 • (904) 363-9002

The information contained herein was obtained from reliable sources and is believed to be correct. However, all information presented should be verified as it is subject to errors and omissions. Pricing may change and/or property may be withdrawn from the market at any time without further notice. Copyright © 2017 - 2018 NAI Hallmark, LLC.

Last Updated: May 21, 2018

CENTURION PLAZA

10245 CENTURION PKWY N, JACKSONVILLE, FL 32256

AERIAL
MAP



Joe Scavetto, VP Brokerage
Phone: (904) 424-9000
js@naihallmark.com

NAI Hallmark

www.naihallmark.com

6675 Corporate Center Parkway, Suite 100
Jacksonville, FL 32216 • (904) 363-9002

The information contained herein was obtained from reliable sources and is believed to be correct. However, all information presented should be verified as it is subject to errors and omissions. Pricing may change and/or property may be withdrawn from the market at any time without further notice. Copyright © 2017 - 2018 NAI Hallmark, LLC.

Last Updated: May 21, 2018