

OFFICE SPACE FOR LEASE

RIVER VIEW CORPORATE CENTER

16201 E. Indiana Avenue, Spokane Valley, WA 99216

Best Space – Best Price – Best Service



SUITE 3100

2267+/- RSF

Annual Rent: \$24.00-\$25.50/FT

Full-Service

Amenities Include:

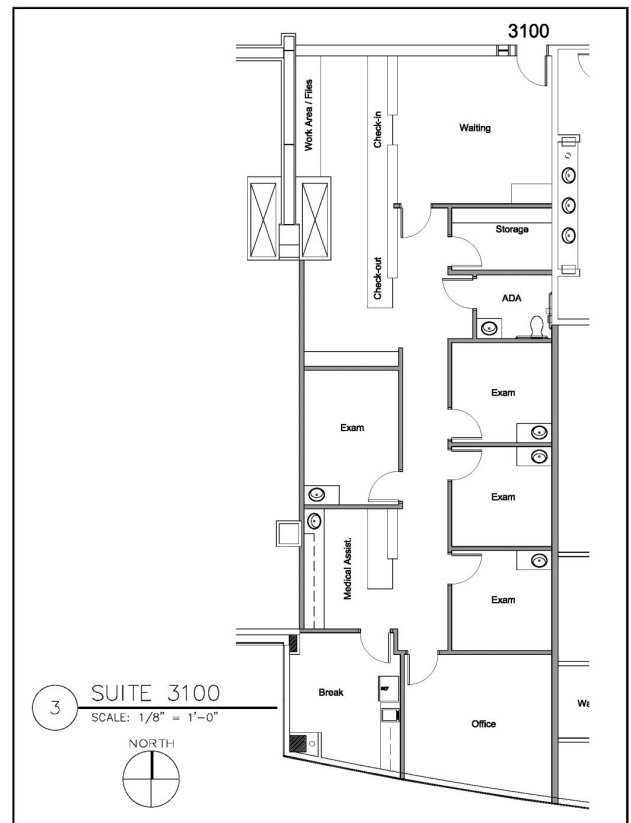
- * Located 12 minutes from Downtown
- * Access to the Centennial Trail
- * Two Conference Rooms--Internet and Phone Hookups
- * Exercise Facility with Showers and Lockers
- * Free Parking
- * Great I-90 Access
- * On-Site Management
- * Upscale Tenant Improvements
- * Full Service Lease
- * Custom Designed Suites

Information and Video

www.rvccspokane.com

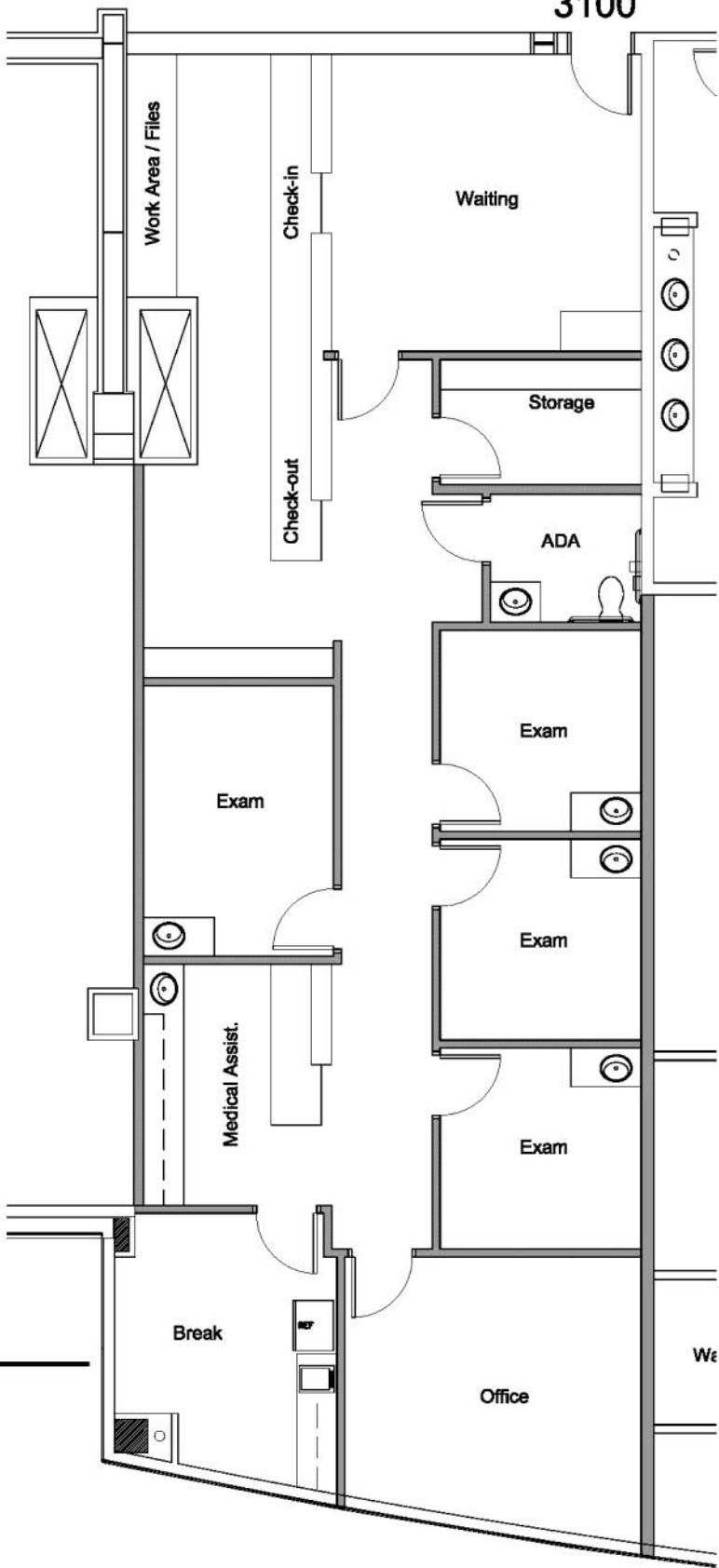
FOR A SHOWING OR ADDITIONAL
INFORMATION PLEASE CALL:

Jack Marr, Director of Leasing
BLOCH RIVER VIEW, LLC
16201 E. Indiana Avenue, Suite 1000
Spokane Valley, WA 99216



All information herein is furnished by the owner; the agent however cannot be responsible for changes, errors, omissions or withdrawal of this offering without notice.

3100



3

SUITE 3100

SCALE: 1/8" = 1'-0"

NORTH

