

PARKWAY PLAZA

13480 BRIAR ST, LEAWOOD, KS 66209



HIGHLIGHTS

- 1.61 Acres, Parkway Plaza
- Zoned retail/office
- Direct frontage on 135th Street
- Adjacent to Reece Nichols and Starbucks

FOR SALE

\$975,000 (\$13.90/SF)

DEMOGRAPHICS

	1 Mile	3 Mile	5 Mile
2019 POPULATION	11,631	78,249	171,374
2019 MED HOUSEHOLD INCOME	\$107,621	\$113,875	\$108,143

John Sweeney, CCIM

Office: 913-945-3718

Mobile 913-461-6326

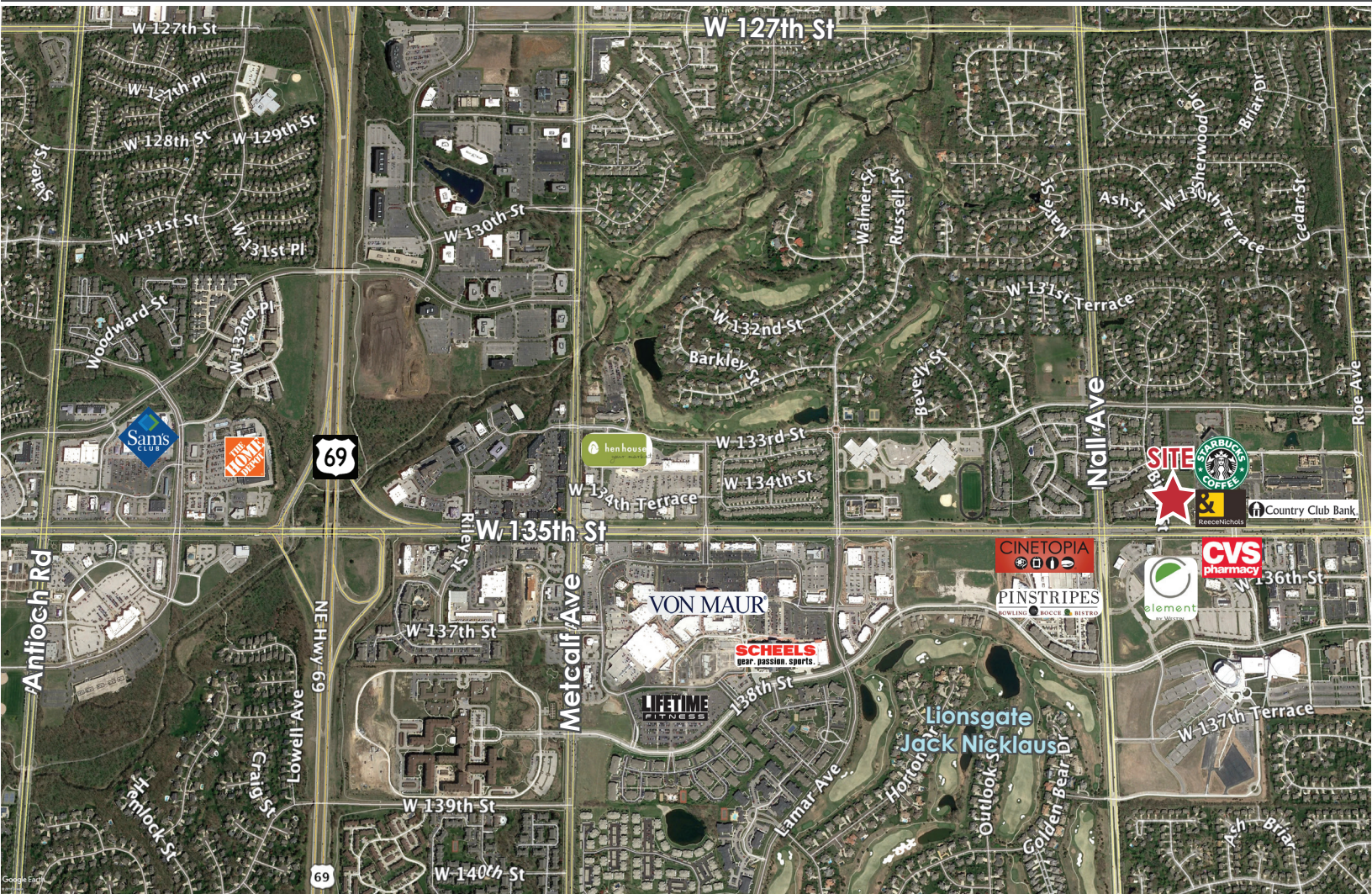
Email: john@reececommercial.com

The information above has been obtained from sources believed reliable. While we do not doubt its accuracy we have not verified it and make no guarantee, warranty or representation about it. It is your responsibility to independently confirm its accuracy and completeness. Any projections, opinions, assumptions, or estimates used are for example only and do not represent the current or future performance of the property. You and your advisors should conduct a careful, independent investigation of the property to determine to your satisfaction the suitability of the property for your needs.

© 2019

AERIAL

13480 BRIAR ST, LEAWOOD, KS 66209



John Sweeney, CCIM

Office: 913-945-3718

Mobile: 913-461-6326

Email: john@reececommercial.com

The information above has been obtained from sources believed reliable. While we do not doubt its accuracy we have not verified it and make no guarantee, warranty or representation about it. It is your responsibility to independently confirm its accuracy and completeness. Any projections, opinions, assumptions, or estimates used are for example only and do not represent the current or future performance of the property. You and your advisors should conduct a careful, independent investigation of the property to determine to your satisfaction the suitability of the property for your needs.

© 2019