



PLATINUM CENTRE II

74th + Louise

Retail/Medical Endcap For Lease



6701 South Louise Avenue
Sioux Falls, SD 57108



size

1,507 sqft



price

\$16.50 per foot NNN
(Estimated NNN: \$6.09)



location

Site is located on Louise Avenue, the premiere retail corridor in South Dakota. The property is directly across the street from the new 80-acre Avera Health Campus.



traffic

Louise Avenue:
18,500 cars per day



layout

Space is currently built out as a medical suite, with 4 office/exam rooms, lab/processing area, 2 restrooms, storage and reception area.



co-tenancy

Avera Health, Lewis, Holiday Gas Stop, Culver's, Silverstar Car Wash, First Class Dental, Krav'n, Balleraena Dance Studio, Kosama, Keller Williams, Sanford Health

Information deemed reliable but not guaranteed.



Lake Lorraine | 2571 S. Westlake Drive #100
Sioux Falls, South Dakota 57106
VBCLink.com | 605.361.8211



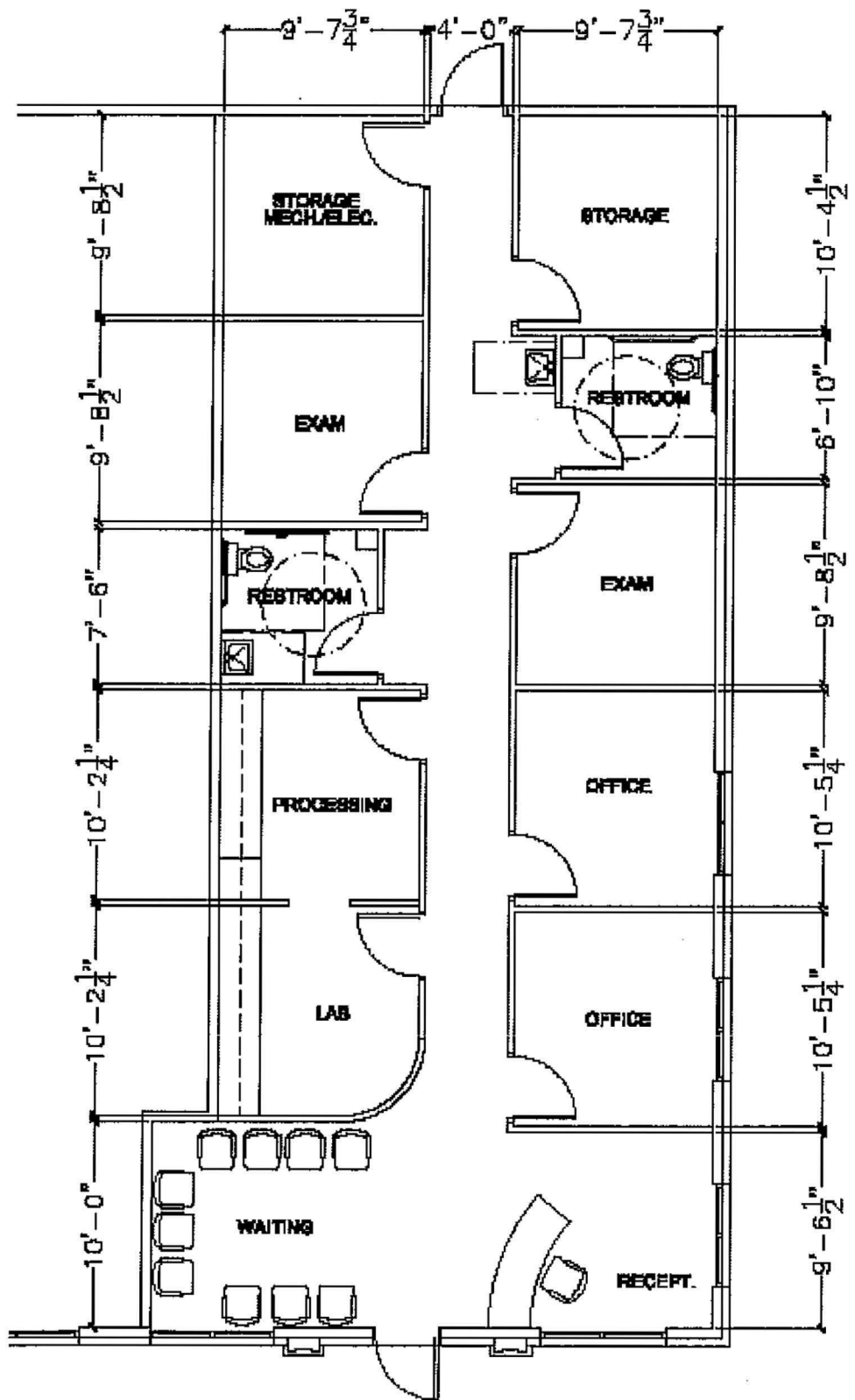
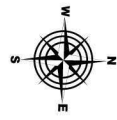
605.376.0127
Ryan@VBCLink.com

AERIAL MAP



HARRISBURG
EXPLORER
ELEMENTARY





1,507 S.F. RENTABLE
23'-10" x 58'-0"

FLOOR PLAN

PHOTOS

