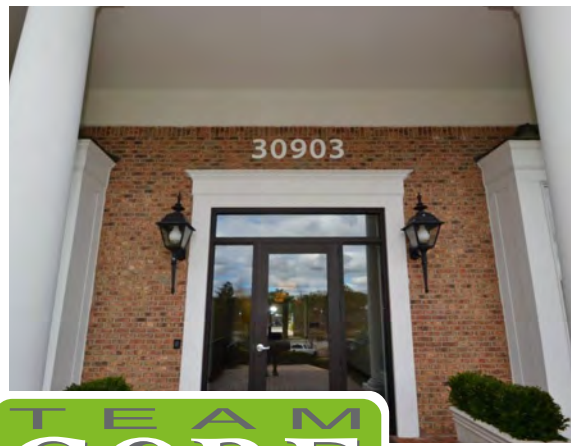




30903 Northwestern Hwy
Farmington Hills, MI 48334



30903 NORTHWESTERN HWY

FARMINGTON HILLS, MI 48334

SUITES RANGING FROM 1,045 TO 2,192 SF
AVAILABLE

- Favorable TI package available
- On-site shared conference/training center with full service kitchen available
- Recently updated lobby and common areas
- On-site ownership and management
- Seasonal Fooda food service and food trucks
- Outdoor patio
- Monument signage available

- **Population**
1 Mile: 3,931
3 Mile: 62,939
5 Mile: 184,216
- **Business**
#of Businesses: 849
of Employees: 7,410
- **Household**
1 Mile: 1,814
3 Mile: 26,935
5 Mile: 76,554
- **Average Household Income**
1 Mile: \$116,817
3 Mile: \$105,735
5 Mile: \$109,588
- **Traffic Count**
Northwestern Hwy. & 13 Mile Rd: 37,942

Kevin Tamer

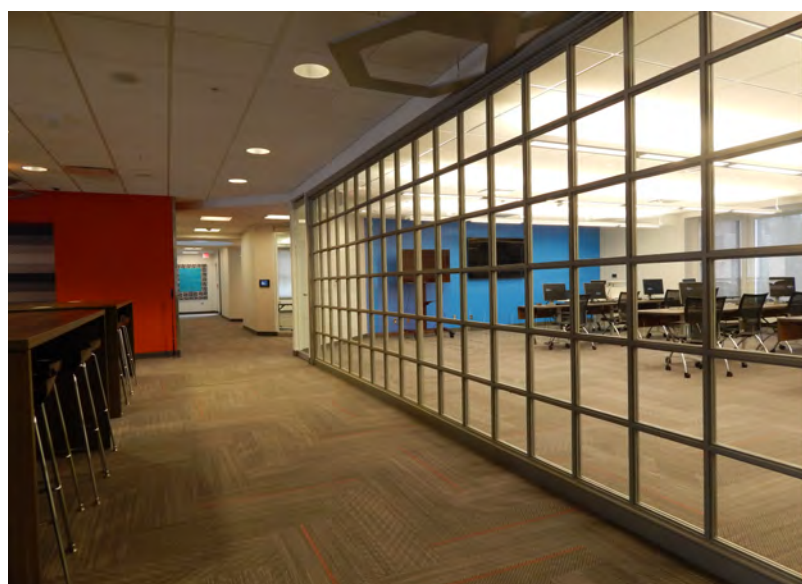
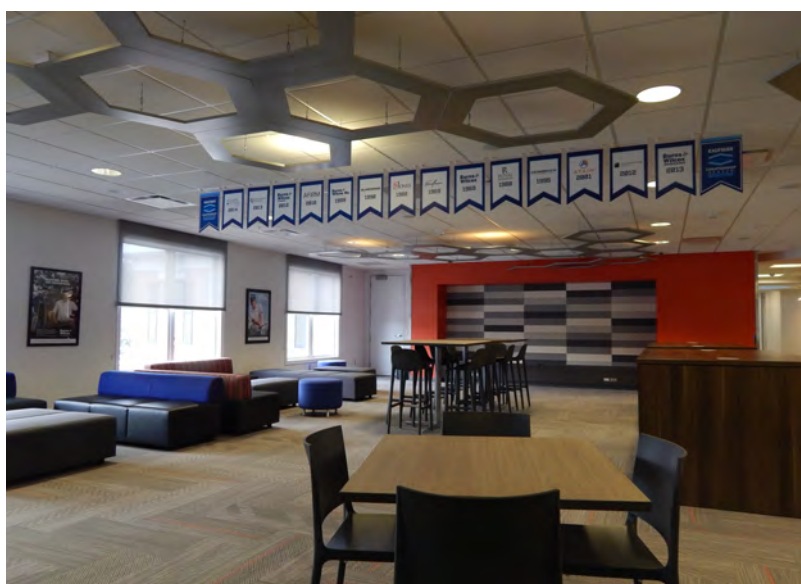
Associate Vice President
Office: 248-710-8000
Cell: 734-624-3729
knt@team-core.com

Samuel McLean

Associate Vice President
Office: 248-710-8000
Cell: 248-935-7237
sam@team-core.com

Jeremiah Preston

Senior Vice President /
Associate Broker
Office: 248-710-8000
Cell: 248-421-9349
jhp@team-core.com



Kevin Tamer

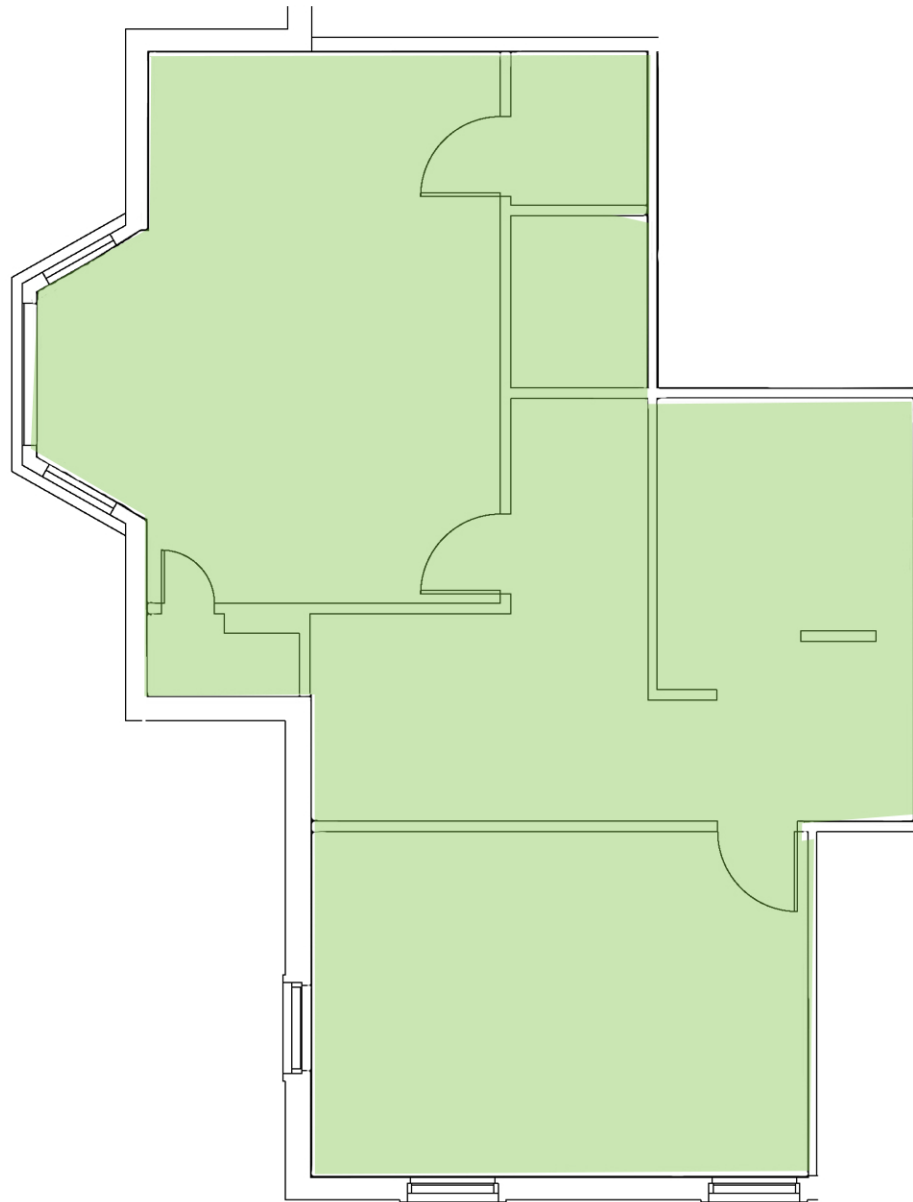
Associate Vice President
Office: 248-710-8000
Cell: 734-624-3729
knt@team-core.com

Samuel McLean

Associate Vice President
Office: 248-710-8000
Cell: 248-935-7237
sam@team-core.com

Jeremiah Preston

Senior Vice President /
Associate Broker
Office: 248-710-8000
Cell: 248-421-9349
jhp@team-core.com



Kaufman ²

4 FINANCIAL CENTER

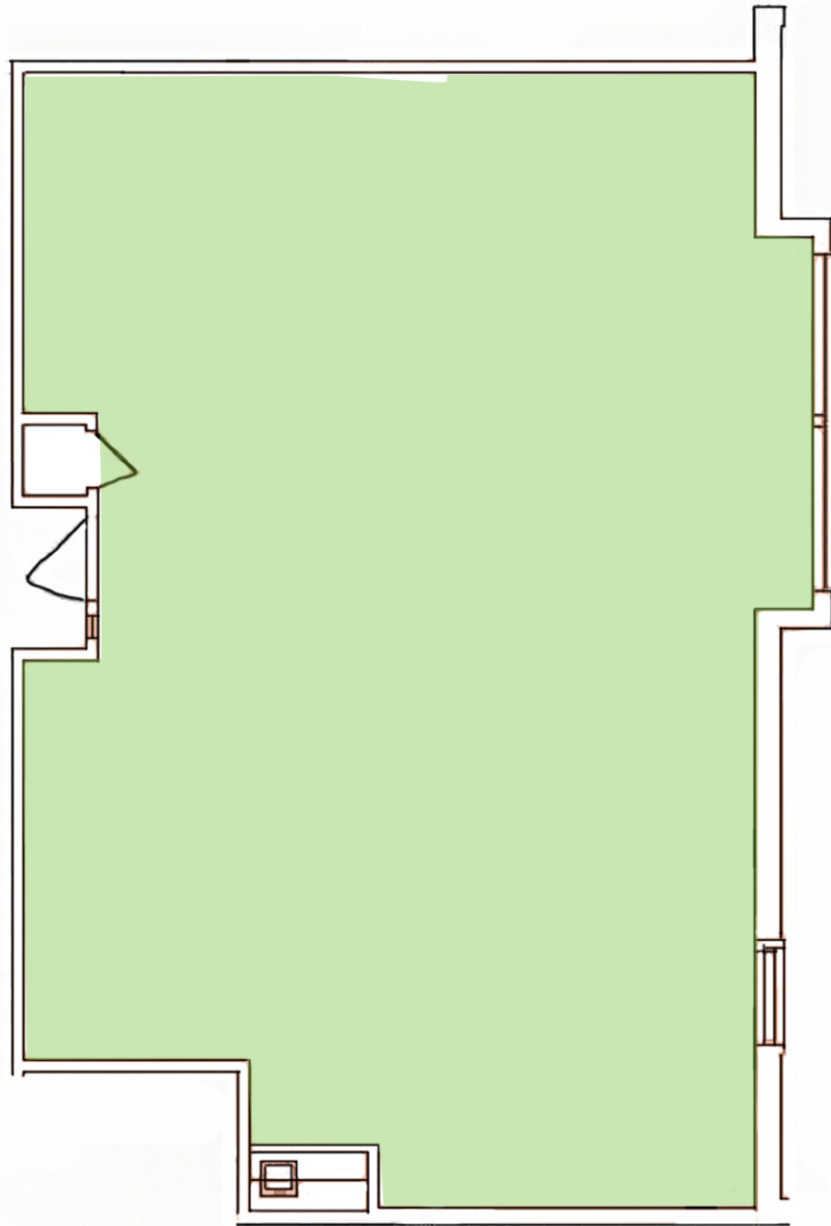
DO NOT SCALE

TEAM
CORE
consultants of real estate

30393 Northwestern Hwy.
Farmington Hills, MI 48334

Suite 260
1,045 RSF
For More Information Please Call:
248.710.8000





Kaufman **2**
FINANCIAL CENTER

DO NOT SCALE

TEAM
CORE
consultants of real estate

30393 Northwestern Hwy.
Farmington Hills, MI 48334

Suite 280
1,168 RSF
For More Information Please Call:
248.710.8000

