

FOR LEASE

# 1423 PACIFIC AVENUE

TACOMA, WA 98402

NEW TO MARKET

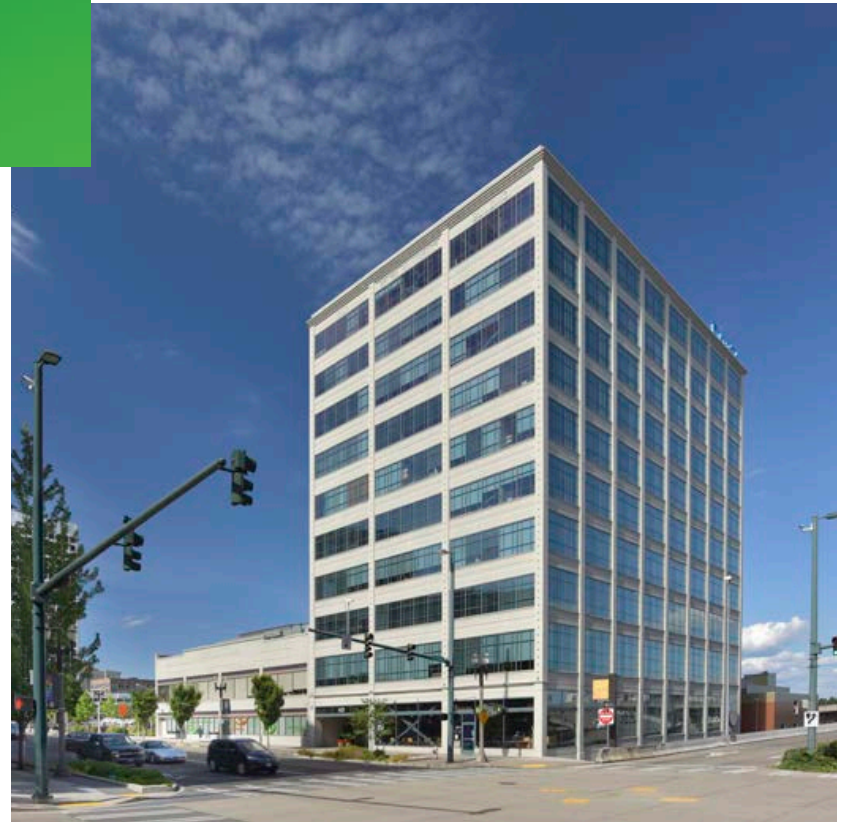


## PROPERTY OVERVIEW

At ±110,000 SF, 1423 Pacific Avenue is a historic icon of Tacoma. Construction of the former Sandberg-Schoenfeld building was completed in 1908 and was, at the time, the tallest building in Tacoma. Designed by the nationally renowned architect, Frederick Heath, the 10-story tower is constructed of reinforced concrete with large windows surrounding the building. Adjacent and connected to the tower is a two-story annex constructed of masonry and heavy timber framing.

In 1999 Horizon Partners purchased the former furniture warehouse and began an extensive historic renovation. The building's innate charm was further enhanced as the ownership worked through a complete restoration, the building was brought up to code with a complete seismic retrofit, the entire building and underground parking were sprinklered, and new electrical, elevators and HVAC systems were added; a meticulous attention to detail can be seen throughout this iconic building.

Now available for the first time in over 20 years, this is your opportunity to occupy a true Historic Class-A building.



## CONTACT US

### JOHN BAUDER

First Vice President  
+1 253 596 0047  
john.bauder@cbre.com

### HARRISON LAIRD

Vice President  
+1 253 596 0030  
harrison.laird@cbre.com

### CBRE, INC

1201 Pacific Avenue  
Suite 1502  
Tacoma, WA 98402

[www.cbre.us/tacoma](http://www.cbre.us/tacoma)

**CBRE**

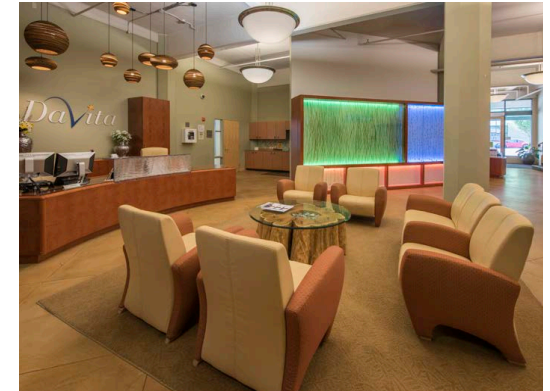
# FOR LEASE 1423 PACIFIC AVENUE

TACOMA, WA 98402



## BUILDING INFO

- + Available May 1, 2021
- + ±110,000 RSF available, divisible to 8,800 SF
- + Floor plates available from 8,800 - 20,000 SF
- + On-site covered and secure parking available
- + On-site gym with showers
- + On-site cafe
- + Easy freeway access
- + One-block from Convention Center Light Rail stop



© 2019 CBRE, Inc. All rights reserved. This information has been obtained from sources believed reliable, but has not been verified for accuracy or completeness. You should conduct a careful, independent investigation of the property and verify all information. Any reliance on this information is solely at your own risk. CBRE and the CBRE logo are service marks of CBRE, Inc. All other marks displayed on this document are the property of their respective owners, and the use of such logos does not imply any affiliation with or endorsement of CBRE. Photos herein are the property of their respective owners. Use of these images without the express written consent of the owner is prohibited. RB 11.25.19

[www.cbre.us/tacoma](http://www.cbre.us/tacoma)

**CBRE**